

JAMAICA TOURIST BOARD

IN SEPTEMBER 2004.....

- Stopover arrivals were down by 15%
- US Market decreased by 14%
- Canada decreased by 15%
- Europe decreased by 20%
- Cruise Passenger arrivals up by 29%.

TOURIST (Stopovers)

Stopover arrivals in September 2004 were adversely affected by the effects of Hurricane Ivan. With a total of **64,940**, stopover arrivals decreased by **15%** over the **76,535** recorded for September 2003. For the five months of summer, May to September 2004, stopover arrivals increased by **4.7%**, with a total of **599,849** compared to **572,885** for the same period in 2003.

Cumulatively, stopovers for the January to September period increased by **6.8%** with **1,097,035** compared to **1,027,108** in 2003.

United States

Stopover arrivals from the United States market decreased by **14%** in September

with a total of **43,794** visitors compared to the **50,890** visitors who came in September 2003. All the marketing regions recorded declines. The Northeast was down **5%**, The South was down **16%**, the Midwest down **24%**, and the West down **26%**.

For the summer period to date, May to September, the US market recorded an increase of **3%**. The Northeast and the West regions were up by **7%** and **4%** respectively. The Midwest and the South, declined by **4%** and **1%** respectively.

For the January to September period, the US market increased by **5%**. Total visitors from this market was **785,990** compared to **746,021** for the corresponding period in 2003. The Northeast increased by **10%**, the Midwest by **3%**, the South by less than **1%** and the West increased by **6%**.

Canada

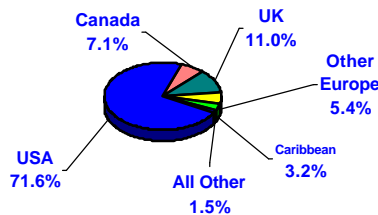
During September, the Canadian market decreased by **15%** with a total of **3,465** stopovers com-

pared to **4,062** in September 2003. The leading province, Ontario decreased by **13%**, and the second most important visitor-producing province, Quebec decreased by **29%**.

For the summer period, May to September, a total of **32,100** stopovers came from this market compared to **27,600** in 2003, an increase of **16%**.

Cumulatively, the Canadian market increased by **12%** in the January to September period, with a total of **77,823** stopovers compared to **69,411** in 2003. The main provinces Ontario and Quebec both recorded increases of **11%** and **10%** respectively. The other notable increases were Alberta up **57%**, Nova Scotia up **22%**, British Columbia up **14%** and New Brunswick up **25%**.

STOPOVER ARRIVALS BY MARKET SHARE
January - September 2004



Europe

The European market declined by **20%** in September 2004.

The market provided a total of **13,449** stopover visitors compared to the **16,708** recorded in September 2003. Stopover arrivals from the United Kingdom was down by **21%**, with **9,407** visitors. Spain was up by **1%** with **1,218**. Italy down by **45%** with **659** and Germany down by **27%** with **698**.

During the summer period, May to September, the European market increased by **11%** with **103,526** visitors compared to **92,948** visitors who came in the same period of 2003.

Cumulatively, for the January to September period, the European market increased by **12%**. Total stopovers for the period was **180,160** compared to **160,657** in 2003. The United Kingdom with a total of **120,475** stopovers increased by **10%**, Italy with **19,534** visitors increased by **3%**, and Germany with a total of **12,629** visitors increased by **11%**.

Latin America

The Latin American market declined by **39%** in September with a total of **554** stopovers compared to **910** in September 2003. The Central American region decreased by **46%**, with **248** stopovers compared to **456** in September 2003. The South American countries combined decreased by **33%** with **306** stopovers compared to **454** in September 2003.

For the January to September period, the Latin American market declined by **2%** with a total of **8,252** visitors compared to **8,389** for the corresponding period in 2003.

The Caribbean

Visitors to Jamaica from the Caribbean region decreased by **8%** in September with a total of **2,914** visitors, compared to **3,169** in September 2003.

The major Caribbean countries which provided visitors to Jamaica in September were: the Cayman Islands (**1,157**) up **54%** and Trinidad & Tobago (**356**) down **41%**. Barbados with **279** down **32%** and the Bahamas with **248**, up by **23%**.

Cumulatively, during the January to September period, Caribbean stopover arrivals to Jamaica increased by **8%**, moving from **33,581** in 2003 to **36,351** in 2004. The Cayman Islands continue to be the leading provider of visitors to Jamaica. In the period under review, they provided a total of **10,378** visitors, followed by Trinidad and Tobago with **5,613**, Barbados with **4,344** and the Bahamas with **2,488** visitors.

Japan

The Japanese market increased by approximately **2%** in September with a total of **328** stopovers compared to **323** in September 2003.

Cumulatively for the January to September period, a total of **3,384** Japanese visitors came to Jamaica, which was up by **19%** from the **2,846** recorded for the corresponding period in 2003.

Other Countries

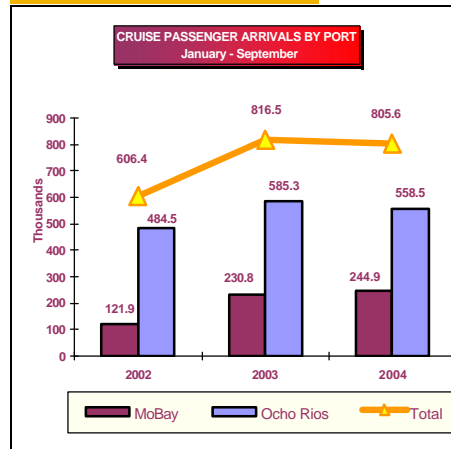
All the other countries, with a total of **5,075** stopovers in the January to September period recorded a decline of **18%** against the **6,203** who came for the same period in 2003.

Market Share

The market share of stopover visitors for the January to September period were as follows:

USA **71.9%**; Canada **7.2%**; UK **10.8%**; Continental Europe **5.4%**; the Caribbean **3.2%**; Latin America **0.8%**; and Other Countries **0.7%**.

Cruise Passengers



A total of **48,301** cruise passengers visited Jamaica in September 2004. This represents a decrease of **29.0%** against the **68,058** recorded for September 2003. Cumulatively, a total of **805,595** cruise passengers visited Jamaica in the January to September period, a decrease of **1.3%** against the **816,547** recorded for the corresponding period in 2003.

A total of **28,077** cruise passengers visited the port of Ocho Rios in September, a decrease of **49.4%** over the **55,492** recorded for September 2003. For the January to September period cruise passenger arrivals to the port of Ocho Rios was **558,463**, a **5%** decrease against the **585,257** recorded for the corresponding period in 2003.

As a result of Hurricanes in Caribbean during September, Montego Bay received several unscheduled ship calls. A total of **20,224** cruise passengers arrived, which was up **61%** against the **12,566** recorded for 2003. Cumulatively, for the January to September period, cruise passenger arrivals to Montego Bay was **244,857**, an increase of **6%** against the **230,772** recorded for the same period in 2003.

Length of Stay

The average length of stay of stopovers in September was **11.5** nights against **10.5** for September 2003. The average length of stay in hotels was **6.4** nights against **6.5** nights as in September 2003.

Cumulatively, the average length of stay for the January to September period was **9.6** nights, against **9.8** nights that was recorded for the similar period in 2003.

First and Repeat Visitors

During September **51%** or **30,696** of the **59,859** Foreign Nationals who visited Jamaica were first-time visitors and the other **49%** or **29,163** were repeat guests.

Cumulatively, in the January to September period, some **55%** of the **1,034,526** Foreign Nationals who visited the island were first-time guests and **45%** were repeat guests.

TABLE 1**TOURIST ARRIVALS**

January - September

2004

Month	Foreign Nationals	<----- Stopovers ----->					Total Stopover Arrivals	+/- 2004/03	+/- 2004/02
		+/- 2004/03	+/- 2004/02	Non-Resident Jamaicans	+/- 2004/03	+/- 2004/02			
January	104,425	8.9%	22.7%	4,925	-9.3%	-1.2%	109,350	7.9%	21.4%
February	115,183	8.2%	20.9%	4,946	-1.4%	4.4%	120,129	7.8%	20.1%
March	130,636	5.2%	5.6%	5,970	11.8%	-8.4%	136,606	5.5%	4.9%
April	123,841	18.4%	31.4%	7,260	-1.6%	12.8%	131,101	17.1%	30.2%
Jan.-Apr.	474,085	10.0%	19.0%	23,101	-0.3%	1.9%	497,186	9.5%	18.1%
May	105,842	10.5%	14.3%	5,917	-4.7%	-11.5%	111,759	9.5%	12.5%
June	125,153	9.7%	18.0%	8,240	3.1%	7.5%	133,393	9.3%	17.3%
July	148,904	11.5%	17.6%	11,327	8.3%	2.3%	160,231	11.2%	16.4%
August	120,683	1.1%	10.1%	8,843	-0.3%	-2.6%	129,526	1.0%	9.1%
September	59,859	-16.3%	-15.2%	5,081	1.0%	-4.8%	64,940	-15.1%	-14.5%
May-Sep.	560,441	4.9%	10.9%	39,408	2.2%	-1.1%	599,849	4.7%	10.0%
Jan.-Sep.	1,034,526	7.2%	14.5%	62,509	1.3%	-0.0%	1,097,035	6.8%	13.5%

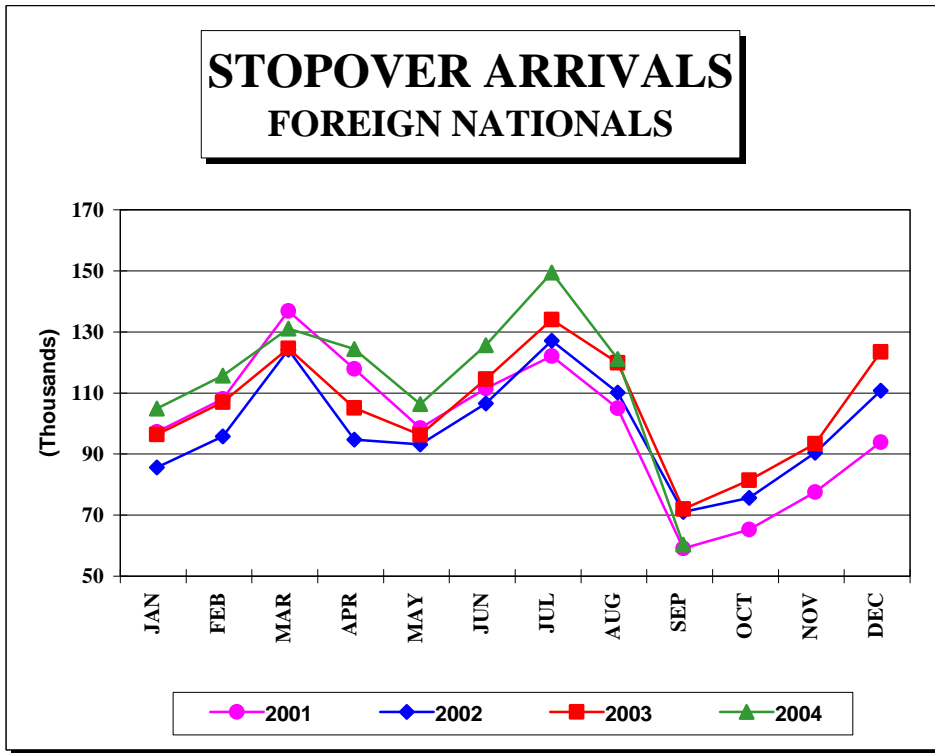


FIG. 1

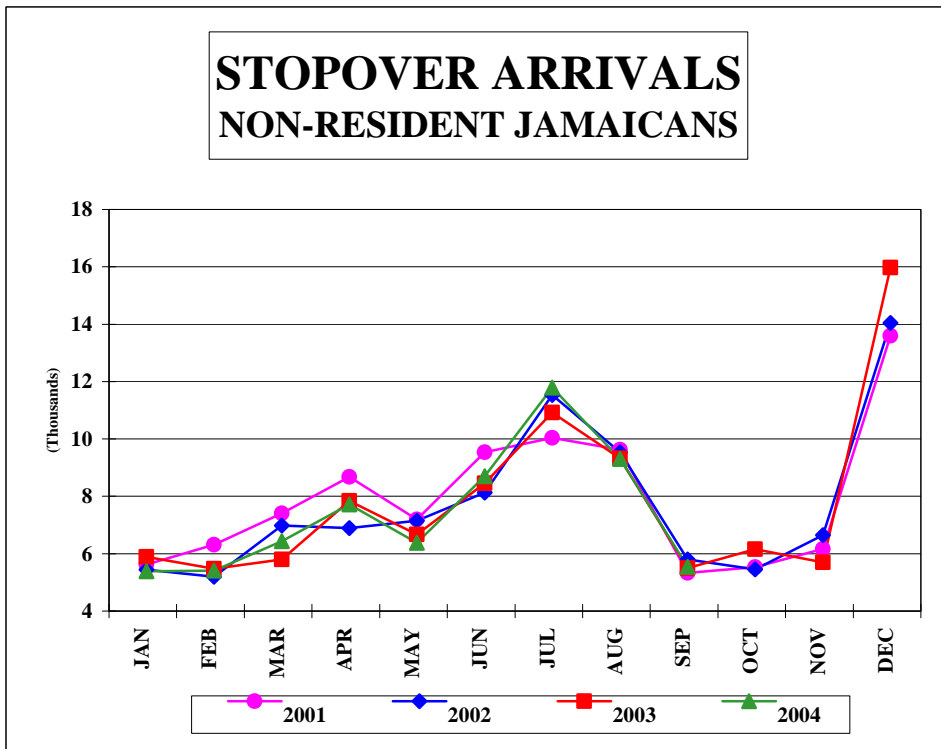


FIG. 1a

TABLE 1.1**First & Repeat Visit to Jamaica**

FOREIGN NATIONALS

2004

	Arrivals				TOTAL	% SHARE	
	First Visit	+/-	Repeat Visit	+/-		First Visit	Repeat Visit
Jan.	54,608	6.3	49,817	12.0	104,425	52.3	47.7
Feb.	61,517	8.6	53,666	7.8	115,183	53.4	46.6
Mar.	76,455	3.2	54,181	8.2	130,636	58.5	41.5
Apr.	68,644	19.7	55,197	16.8	123,841	55.4	44.6
Jan.-Apr.	261,224	9.1	212,861	11.1	474,085	55.1	44.9
May	61,937	13.8	43,905	6.0	105,842	58.5	41.5
Jun.	71,284	9.4	53,869	10.1	125,153	57.0	43.0
Jul.	78,621	11.4	70,283	11.6	148,904	52.8	47.2
Aug.	66,453	1.1	54,230	1.1	120,683	55.1	44.9
Sept.	30,696	-20.8	29,163	-10.9	59,859	51.3	48.7
May-Sep.	308,991	4.9	251,450	4.9	560,441	55.1	44.9
Jan.-Sep.	570,215	6.8	464,311	7.6	1,034,526	55.1	44.9

TABLE 1.2

**STOPOVER ARRIVALS BY MARKET REGION
AND MONTH OF ARRIVAL 2004**

	U.S.A.				Canada	U.K. Europe	Latin America	Caribbean	Asia	Other Countries	Total
	Northeast	Mid-West	South	West							
January	31,236	23,510	14,108	4,542	12,336	18,959	766	2,980	521	392	109,350
February	37,653	27,054	14,984	4,183	12,529	19,008	841	2,822	699	356	120,129
March	42,908	29,393	20,789	5,495	11,239	21,009	1,209	3,585	686	293	136,606
April	47,843	20,524	22,329	6,670	9,619	17,658	773	4,749	611	325	131,101
Jan.-Apr.	159,640	100,481	72,210	20,890	45,723	76,634	3,589	14,136	2,517	1,366	497,186
May	33,313	14,271	26,608	6,419	6,859	19,103	981	3,233	570	402	111,759
June	39,235	16,851	36,446	8,636	5,957	20,102	782	4,510	502	372	133,393
July	54,122	15,699	38,723	9,184	8,395	24,744	1,473	6,721	603	567	160,231
August	48,471	12,042	20,423	8,532	7,424	26,128	873	4,837	455	341	129,526
September	19,338	7,200	14,072	3,184	3,465	13,449	554	2,914	483	281	64,940
May - Sep.	194,479	66,063	136,272	35,955	32,100	103,526	4,663	22,215	2,613	1,963	599,849
Jan. - Sep.	354,119	166,544	208,482	56,845	77,823	180,160	8,252	36,351	5,130	3,329	1,097,035
+/- %	9.7%	2.9%	0.5%	5.8%	12.1%	12.1%	-1.6%	8.2%	1.2%	-16.4%	6.8%

TABLE 2

TOTAL STOPOVER ARRIVALS BY PERMANENT RESIDENCE

	<u>SEPTEMBER</u>							<u>JANUARY - SEPTEMBER</u>						
	<u>2001</u>	<u>2002</u>	<u>2003</u>	<u>2004</u>	<u>% Change</u>			<u>2001</u>	<u>2002</u>	<u>2003</u>	<u>2004</u>	<u>% Change</u>		
					2004/03	2004/02	2004/01					2004/03	2004/02	2004/01
U.S.A.														
<u>NORTHEAST (NEW YORK)</u>														
Connecticut	864	944	1,194	1,064	-10.9	12.7	23.1	18,263	16,698	18,324	20,959	14.4	25.5	14.8
Delaware	181	329	238	254	6.7	-22.8	40.3	4,203	3,710	3,694	4,278	15.8	15.3	1.8
Maine	104	131	100	84	-16.0	-35.9	-19.2	2,175	1,823	1,884	2,567	36.3	40.8	18.0
Maryland	1,643	2,112	2,027	1,908	-5.9	-9.7	16.1	27,330	27,230	29,537	31,689	7.3	16.4	15.9
Massachusetts	969	1,076	1,126	1,036	-8.0	-3.7	6.9	25,839	21,597	22,437	26,170	16.6	21.2	1.3
New Hampshire	120	191	190	186	-2.1	-2.6	55.0	3,918	3,080	3,292	3,921	19.1	27.3	0.1
New Jersey	2,192	2,576	2,827	2,569	-9.1	-0.3	17.2	44,232	41,679	46,768	52,282	11.8	25.4	18.2
New York	7,131	8,071	8,118	8,313	2.4	3.0	16.6	126,477	120,677	128,152	137,982	7.7	14.3	9.1
Pennsylvania	2,025	2,938	2,751	2,343	-14.8	-20.3	15.7	40,602	39,467	42,717	45,754	7.1	15.9	12.7
Rhode Island	97	164	164	134	-18.3	-18.3	38.1	2,467	2,367	2,648	3,270	23.5	38.1	32.5
Vermont	39	34	43	47	9.3	38.2	20.5	1,434	971	1,131	1,542	36.3	58.8	7.5
Virginia	771	1,057	1,158	1,014	-12.4	-4.1	31.5	15,690	15,296	16,781	17,664	5.3	15.5	12.6
Washington D.C.	225	288	258	302	17.1	4.9	34.2	4,162	3,868	4,289	4,221	-1.6	9.1	1.4
West Virginia	79	78	99	84	-15.2	7.7	6.3	1,624	1,281	1,266	1,820	43.8	42.1	12.1
Total	16,440	19,989	20,293	19,338	-4.7	-3.3	17.6	318,416	299,744	322,920	354,119	9.7	18.1	11.2
<u>MIDWEST (CHICAGO)</u>														
Illinois	2,014	2,850	2,418	2,065	-14.6	-27.5	2.5	40,991	38,855	39,995	39,984	-0.0	2.9	-2.5
Indiana	565	589	701	547	-22.0	-7.1	-3.2	9,872	9,482	10,731	10,545	-1.7	11.2	6.8
Iowa	238	325	323	218	-32.5	-32.9	-8.4	5,443	5,505	6,034	6,399	6.0	16.2	17.6
Kansas	179	345	316	299	-5.4	-13.3	67.0	4,015	3,514	3,452	4,248	23.1	20.9	5.8
Kentucky	288	372	389	268	-31.1	-28.0	-6.9	4,230	4,815	4,839	4,789	-1.0	-0.5	13.2
Michigan	776	1,048	1,072	772	-28.0	-26.3	-0.5	23,392	19,063	22,322	22,503	0.8	18.0	-3.8
Minnesota	356	538	503	387	-23.1	-28.1	8.7	15,205	14,129	15,906	16,129	1.4	14.2	6.1
Missouri	630	1,220	1,393	851	-38.9	-30.2	35.1	14,196	15,040	17,132	17,163	0.2	14.1	20.9
Nebraska	175	319	355	216	-39.2	-32.3	23.4	3,428	3,061	3,531	3,733	5.7	22.0	8.9
North Dakota	22	39	61	48	-21.3	23.1	118.2	832	850	903	1,423	57.6	67.4	71.0
Ohio	784	1,099	1,220	998	-18.2	-9.2	27.3	15,762	15,859	15,648	16,045	2.5	1.2	1.8
South Dakota	36	34	61	50	-18.0	47.1	38.9	964	908	1,321	1,473	11.5	62.2	52.8
Wisconsin	662	788	710	481	-32.3	-39.0	-27.3	21,477	18,947	20,080	22,110	10.1	16.7	2.9
Total	6,725	9,566	9,522	7,200	-24.4	-24.7	7.1	159,807	150,028	161,894	166,544	2.9	11.0	4.2

TABLE 2

TOTAL STOPOVER ARRIVALS BY PERMANENT RESIDENCE

	<u>SEPTEMBER</u>							<u>JANUARY - SEPTEMBER</u>						
	<u>2001</u>	<u>2002</u>	<u>2003</u>	<u>2004</u>	<u>% Change</u>			<u>2001</u>	<u>2002</u>	<u>2003</u>	<u>2004</u>	<u>% Change</u>		
					2004/03	2004/02	2004/01					2004/03	2004/02	2004/01
<u>SOUTH (MIAMI)</u>														
Alabama	312	479	461	326	-29.3	-31.9	4.5	5,607	5,576	6,016	5,675	-5.7	1.8	1.2
Arkansas	106	202	172	142	-17.4	-29.7	34.0	2,299	2,272	2,388	2,551	6.8	12.3	11.0
Florida	6,931	8,326	8,287	6,948	-16.2	-16.6	0.2	92,202	92,416	92,164	92,493	0.4	0.1	0.3
Georgia	2,328	3,050	2,753	2,288	-16.9	-25.0	-1.7	32,931	36,135	33,581	33,775	0.6	-6.5	2.6
Louisiana	311	404	336	303	-9.8	-25.0	-2.6	6,287	6,056	5,589	4,977	-11.0	-17.8	-20.8
Mississippi	122	145	194	148	-23.7	2.1	21.3	2,549	2,567	2,385	2,601	9.1	1.3	2.0
North Carolina	910	1,106	1,142	937	-18.0	-15.3	3.0	13,869	13,220	14,147	14,970	5.8	13.2	7.9
Oklahoma	230	229	229	255	11.4	11.4	10.9	3,415	3,506	3,561	4,011	12.6	14.4	17.5
South Carolina	417	520	490	506	3.3	-2.7	21.3	6,279	6,106	6,327	6,645	5.0	8.8	5.8
Tennessee	572	776	746	606	-18.8	-21.9	5.9	8,835	9,957	9,921	9,832	-0.9	-1.3	11.3
Texas	2,087	2,181	1,950	1,613	-17.3	-26.0	-22.7	31,342	33,346	31,420	30,952	-1.5	-7.2	-1.2
Total	14,326	17,418	16,760	14,072	-16.0	-19.2	-1.8	205,615	211,157	207,499	208,482	0.5	-1.3	1.4
<u>WEST (LOS ANGELES)</u>														
Alaska	15	23	20	21	5.0	-8.7	40.0	272	190	282	277	-1.8	45.8	1.8
Arizona	433	300	270	209	-22.6	-30.3	-51.7	6,070	3,569	3,493	3,783	8.3	6.0	-37.7
California	2,114	2,982	2,795	2,048	-26.7	-31.3	-3.1	33,783	34,003	34,117	36,331	6.5	6.8	7.5
Colorado	264	335	347	218	-37.2	-34.9	-17.4	5,502	5,529	5,079	5,840	15.0	5.6	6.1
Hawaii	8	15	16	19	18.8	26.7	137.5	197	167	185	221	19.5	32.3	12.2
Idaho	33	64	53	32	-39.6	-50.0	-3.0	906	770	837	652	-22.1	-15.3	-28.0
Montana	15	27	27	27	0.0	0.0	80.0	499	492	605	649	7.3	31.9	30.1
Nevada	77	165	179	139	-22.3	-15.8	80.5	1,558	1,508	1,928	1,941	0.7	28.7	24.6
New Mexico	34	53	66	42	-36.4	-20.8	23.5	909	748	733	836	14.1	11.8	-8.0
Oregon	99	174	131	86	-34.4	-50.6	-13.1	1,800	1,811	1,653	1,734	4.9	-4.3	-3.7
Utah	99	125	141	85	-39.7	-32.0	-14.1	864	1,117	1,259	1,116	-11.4	-0.1	29.2
Washington	235	281	253	231	-8.7	-17.8	-1.7	3,370	3,083	3,216	3,089	-3.9	0.2	-8.3
Wyoming	8	9	17	27	58.8	200.0	237.5	286	289	321	376	17.1	30.1	31.5
Total	3,434	4,553	4,315	3,184	-26.2	-30.1	-7.3	56,016	53,276	53,708	56,845	5.8	6.7	1.5
TOTAL U.S.A.	40,925	51,526	50,890	43,794	-13.9	-15.0	7.0	739,854	714,205	746,021	785,990	5.4	10.1	6.2

TABLE 2

TOTAL STOPOVER ARRIVALS BY PERMANENT RESIDENCE

	<u>SEPTEMBER</u>							<u>JANUARY - SEPTEMBER</u>						
	<u>2001</u>	<u>2002</u>	<u>2003</u>	<u>2004</u>	<u>% Change</u>			<u>2001</u>	<u>2002</u>	<u>2003</u>	<u>2004</u>	<u>% Change</u>		
					2004/03	2004/02	2004/01					2004/03	2004/02	2004/01
<u>CANADA (TORONTO)</u>														
Alberta	159	195	138	147	6.5	-24.6	-7.5	3,416	2,763	2,847	4,477	57.3	62.0	31.1
British Columbia	167	142	141	93	-34.0	-34.5	-44.3	2,505	1,927	2,053	2,336	13.8	21.2	-6.7
Manitoba	57	66	43	40	-7.0	-39.4	-29.8	2,221	1,279	2,166	1,928	-11.0	50.7	-13.2
New Brunswick	17	46	16	25	56.3	-45.7	47.1	1,076	748	681	849	24.7	13.5	-21.1
Newfoundland	29	24	43	4	-90.7	-83.3	-86.2	458	457	437	427	-2.3	-6.6	-6.8
Nova Scotia	67	47	41	44	7.3	-6.4	-34.3	1,862	954	1,251	1,527	22.1	60.1	-18.0
Ontario	3,544	3,552	3,300	2,863	-13.2	-19.4	-19.2	63,762	56,071	51,288	56,823	10.8	1.3	-10.9
P.E. Island	3	2	5	0	-	-	-	111	102	137	144	5.1	41.2	29.7
Quebec	297	300	315	224	-28.9	-25.3	-24.6	10,379	8,095	7,501	8,249	10.0	1.9	-20.5
Saskatchewan	19	31	10	20	100.0	-35.5	5.3	1,002	550	886	898	1.4	63.3	-10.4
Other Canada	16	17	10	5	-50.0	-70.6	-68.8	349	233	164	165	0.6	-29.2	-52.7
Total	4,375	4,422	4,062	3,465	-14.7	-21.6	-20.8	87,141	73,179	69,411	77,823	12.1	6.3	-10.7
<u>LONDON OFFICE</u>														
<u>Northern Europe</u>														
U.K.	9,911	10,978	11,911	9,407	-21.0	-14.3	-5.1	93,978	90,827	109,134	120,475	10.4	32.6	28.2
Denmark	30	21	37	42	13.5	100.0	40.0	579	387	302	502	66.2	29.7	-13.3
Finland	13	9	19	19	0.0	111.1	46.2	284	287	333	293	-12.0	2.1	3.2
Norway	44	58	33	15	-54.5	-74.1	-65.9	601	661	616	507	-17.7	-23.3	-15.6
Sweden	68	48	67	42	-37.3	-12.5	-38.2	962	774	690	777	12.6	0.4	-19.2
<u>Southern Europe</u>														
Greece	21	15	16	11	-31.3	-26.7	-47.6	149	229	217	156	-28.1	-31.9	4.7
Italy	658	842	1,192	659	-44.7	-21.7	0.2	10,679	9,947	18,938	19,534	3.1	96.4	82.9
Portugal	41	74	42	48	14.3	-35.1	17.1	319	764	380	698	83.7	-8.6	118.8
Spain	524	975	1,202	1,218	1.3	24.9	132.4	3,212	5,252	6,005	8,456	40.8	61.0	163.3
<u>Western Europe</u>														
Austria	138	82	86	123	43.0	50.0	-10.9	1,689	1,228	1,442	2,113	46.5	72.1	25.1
Belgium	86	74	277	332	19.9	348.6	286.0	823	908	1,816	3,107	71.1	242.2	277.5
France	109	103	160	139	-13.1	35.0	27.5	1,971	2,005	2,016	2,252	11.7	12.3	14.3
Germany	1,376	1,178	951	698	-26.6	-40.7	-49.3	14,982	10,219	11,342	12,629	11.3	23.6	-15.7
Luxemburg	4	15	10	20	100.0	33.3	400.0	67	88	99	139	40.4	58.0	107.5
Netherlands	266	179	311	165	-46.9	-7.8	-38.0	2,217	1,727	3,008	2,866	-4.7	66.0	29.3
Switzerland	163	150	144	337	134.0	124.7	106.7	1,811	1,406	1,601	2,927	82.8	108.2	61.6
<u>Central/East Europe</u>														
Czechoslovakia	27	16	26	13	-50.0	-18.8	-51.9	239	230	244	296	21.3	28.7	23.8
Hungary	6	10	8	48	500.0	380.0	700.0	115	184	123	185	50.4	0.5	60.9
Poland	25	48	72	39	-45.8	-18.8	56.0	276	487	692	562	-18.8	15.4	103.6
Russia	28	49	56	29	-48.2	-40.8	3.6	663	826	856	713	-16.7	-13.7	7.5
Other Europe	43	52	88	45	-48.9	-13.5	4.7	660	835	803	973	21.2	16.5	47.4
Total	13,581	14,976	16,708	13,449	-19.5	-10.2	-1.0	136,276	129,271	160,657	180,160	12.1	39.4	32.2

TABLE 2

TOTAL STOPOVER ARRIVALS BY PERMANENT RESIDENCE

	<u>SEPTEMBER</u>							<u>JANUARY - SEPTEMBER</u>						
	<u>2001</u>	<u>2002</u>	<u>2003</u>	<u>2004</u>	<u>% Change</u>			<u>2001</u>	<u>2002</u>	<u>2003</u>	<u>2004</u>	<u>% Change</u>		
					2004/03	2004/02	2004/01					2004/03	2004/02	2004/01
<u>LATIN AMERICA</u>														
<u>CENTRAL AMERICA</u>														
Mexico	169	169	173	71	-59.0	-58.0	-58.0	2,029	1,488	1,417	1,891	33.5	27.1	-6.8
Belize	43	49	59	20	-66.1	-59.2	-53.5	382	428	819	375	-54.2	-12.4	-1.8
Costa Rica	61	42	64	31	-51.6	-26.2	-49.2	469	498	434	435	0.2	-12.7	-7.2
El Salvador	6	7	7	10	42.9	42.9	66.7	162	154	96	140	45.8	-9.1	-13.6
Guatemala	35	44	61	23	-62.3	-47.7	-34.3	264	327	275	296	7.6	-9.5	12.1
Honduras	10	15	18	15	-16.7	0.0	50.0	123	127	132	191	44.7	50.4	55.3
Nicaragua	12	1	9	10	11.1	900.0	-16.7	40	58	33	55	66.7	-5.2	37.5
Panama	47	92	65	68	4.6	-26.1	44.7	978	791	742	748	0.8	-5.4	-23.5
Total	383	419	456	248	-45.6	-40.8	-35.2	4,447	3,871	3,948	4,131	4.6	6.7	-7.1
<u>SOUTH AMERICA</u>														
Argentina	50	23	41	36	-12.2	56.5	-28.0	1,054	345	499	397	-20.4	15.1	-62.3
Bolivia	6	1	11	5	-54.5	400.0	-16.7	55	40	55	32	-41.8	-20.0	-41.8
Brazil	51	43	47	54	14.9	25.6	5.9	703	675	554	683	23.3	1.2	-2.8
Chile	60	38	52	19	-63.5	-50.0	-68.3	553	527	318	327	2.8	-38.0	-40.9
Colombia	121	21	25	18	-28.0	-14.3	-85.1	1,352	715	521	218	-58.2	-69.5	-83.9
Ecuador	18	3	7	5	-28.6	66.7	-72.2	254	121	61	76	24.6	-37.2	-70.1
Guyana	96	141	123	79	-35.8	-44.0	-17.7	1,184	1,378	1,294	1,334	3.1	-3.2	12.7
Paraguay	0	0	0	0	-	-	-	20	18	40	16	-60.0	-11.1	-20.0
Peru	25	28	29	20	-31.0	-28.6	-20.0	301	278	258	217	-15.9	-21.9	-27.9
Surinam	8	11	19	18	-5.3	63.6	125.0	201	138	220	232	5.5	68.1	15.4
Uruguay	6	5	3	6	100.0	20.0	0.0	117	63	37	84	127.0	33.3	-28.2
Venezuela	59	93	93	46	-50.5	-50.5	-22.0	948	977	574	504	-12.2	-48.4	-46.8
Other South America	1	0	4	0	-	-	-	5	11	10	1	-90.0	-90.9	-80.0
Total	501	407	454	306	-32.6	-24.8	-38.9	6,747	5,286	4,441	4,121	-7.2	-22.0	-38.9
Total Latin America	884	826	910	554	-39.1	-32.9	-37.3	11,194	9,157	8,389	8,252	-1.6	-9.9	-26.3

TABLE 2

TOTAL STOPOVER ARRIVALS BY PERMANENT RESIDENCE

	SEPTEMBER							JANUARY - SEPTEMBER						
	2001	2002	2003	2004	% Change			2001	2002	2003	2004	% Change		
					2004/03	2004/02	2004/01					2004/03	2004/02	2004/01
CARIBBEAN														
Antigua	98	169	125	93	-25.6	-45.0	-5.1	1,099	1,343	1,415	1,484	4.9	10.5	35.0
Bahamas	427	264	202	248	22.8	-6.1	-41.9	5,145	2,987	2,191	2,488	13.6	-16.7	-51.6
Barbados	271	334	409	279	-31.8	-16.5	3.0	3,269	3,624	4,104	4,344	5.8	19.9	32.9
Bermuda	69	80	83	94	13.3	17.5	36.2	1,257	1,345	1,708	1,594	-6.7	18.5	26.8
British Virgin Is.	59	37	38	59	55.3	59.5	0.0	410	355	444	690	55.4	94.4	68.3
Cayman Is.	732	809	750	1,157	54.3	43.0	58.1	8,631	8,217	8,621	10,378	20.4	26.3	20.2
Dominica	36	43	44	20	-54.5	-53.5	-44.4	328	295	310	254	-18.1	-13.9	-22.6
Grenada	39	61	46	36	-21.7	-41.0	-7.7	420	470	515	472	-8.3	0.4	12.4
Monsterrat	6	7	9	2	-77.8	-71.4	-66.7	87	66	96	86	-10.4	30.3	-1.1
St. Kitts/Nevis/Anguilla	72	80	65	40	-38.5	-50.0	-44.4	529	578	608	711	16.9	23.0	34.4
St. Lucia	188	207	178	132	-25.8	-36.2	-29.8	1,174	1,301	1,468	1,570	6.9	20.7	33.7
St. Vincent	51	77	53	37	-30.2	-51.9	-27.5	441	538	524	520	-0.8	-3.3	17.9
Turks & Caicos Is.	78	83	48	63	31.3	-24.1	-19.2	741	744	753	866	15.0	16.4	16.9
Trinidad & Tobago	481	446	603	356	-41.0	-20.2	-26.0	4,898	5,134	5,592	5,613	0.4	9.3	14.6
Comm. Caribbean	2,607	2,697	2,653	2,616	-1.4	-3.0	0.3	28,429	26,997	28,349	31,070	9.6	15.1	9.3
Aruba	7	35	31	11	-64.5	-68.6	57.1	205	311	390	363	-6.9	16.7	77.1
Bonaire	0	0	2	2	0.0	-	-	0	0	30	73	143.3	-	-
Cuba	55	94	69	30	-56.5	-68.1	-45.5	537	504	526	302	-42.6	-40.1	-43.8
Curacao	47	48	56	44	-21.4	-8.3	-6.4	533	724	1,051	854	-18.7	18.0	60.2
Dominican Republic	70	105	71	78	9.9	-25.7	11.4	730	752	643	891	38.6	18.5	22.1
Guadelope	3	2	6	9	50.0	350.0	200.0	48	60	67	126	88.1	110.0	162.5
Haiti	31	87	58	15	-74.1	-82.8	-51.6	405	644	587	316	-46.2	-50.9	-22.0
Puerto Rico	75	99	129	42	-67.4	-57.6	-44.0	1,106	1,228	1,011	1,197	18.4	-2.5	8.2
St. Maarten	43	50	65	46	-29.2	-8.0	7.0	397	405	546	622	13.9	53.6	56.7
All other Caribbean	22	34	29	21	-27.6	-38.2	-4.5	390	397	381	537	40.9	35.3	37.7
Other Caribbean	353	554	516	298	-42.2	-46.2	-15.6	4,351	5,025	5,232	5,281	0.9	5.1	21.4
TOTAL CARIBBEAN	2,960	3,251	3,169	2,914	-8.0	-10.4	-1.6	32,780	32,022	33,581	36,351	8.2	13.5	10.9
OTHER COUNTRIES														
African Countries	54	99	73	74	1.4	-25.3	37.0	981	931	815	923	13.3	-0.9	-5.9
Isreal	129	94	56	76	35.7	-19.1	-41.1	865	554	596	622	4.4	12.3	-28.1
Saudi Arabia	4	0	1	1	0.0	-	-75.0	34	43	33	24	-27.3	-44.2	-29.4
Turkey	5	6	7	15	114.3	150.0	200.0	170	84	99	139	40.4	65.5	-18.2
Other Middle East	29	14	40	28	-30.0	100.0	-3.4	241	278	272	264	-2.9	-5.0	9.5
India & Pakistan	58	41	40	23	-42.5	-43.9	-60.3	606	403	444	424	-4.5	5.2	-30.0
Japan	304	414	323	328	1.5	-20.8	7.9	4,587	3,346	2,846	3,384	18.9	1.1	-26.2
China	25	29	35	38	8.6	31.0	52.0	369	362	406	394	-3.0	8.8	6.8
Taiwan	12	2	6	6	0.0	200.0	-50.0	64	52	62	42	-32.3	-19.2	-34.4
Korea	10	11	13	8	-38.5	-27.3	-20.0	195	176	134	164	22.4	-6.8	-15.9
Philippines	22	50	38	44	15.8	-12.0	100.0	350	573	884	426	-51.8	-25.7	21.7
Singapore	11	5	4	2	-50.0	-60.0	-81.8	113	73	81	74	-8.6	1.4	-34.5
Other Asia	17	8	18	34	88.9	325.0	100.0	267	182	211	263	24.6	44.5	-1.5
Australia	94	108	122	76	-37.7	-29.6	-19.1	1,023	1,118	1,730	1,086	-37.2	-2.9	6.2
New Zealand	8	29	17	10	-41.2	-65.5	25.0	205	246	395	209	-47.1	-15.0	2.0
All Other Ctries	1	7	3	1	-	-	-	45	64	41	21	-48.8	-67.2	-53.3
Total	783	917	796	764	-4.0	-16.7	-2.4	10,115	8,485	9,049	8,459	-6.5	-0.3	-16.4
GRAND TOTAL	63,508	75,918	76,535	64,940	-15.1	-14.5	2.3	1,017,360	966,319	1,027,108	1,097,035	6.8	13.5	7.8

STOPOVER VISITORS BY MARKET SHARE

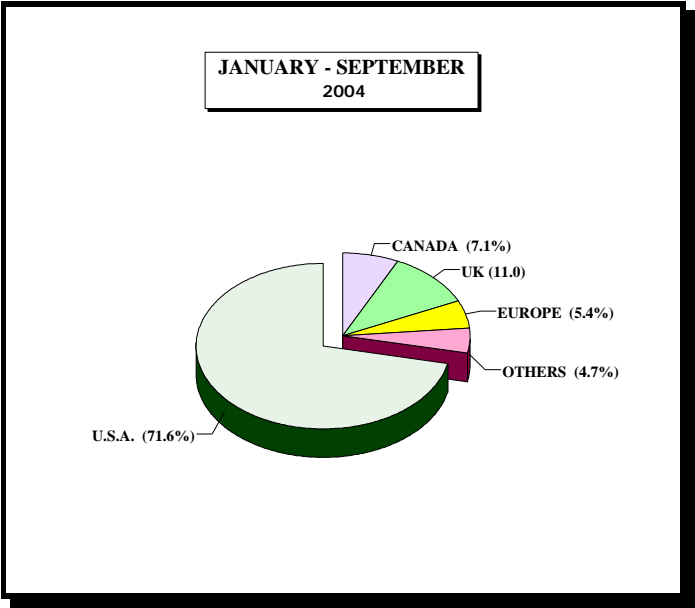


Fig. 2

Country	September 2004	% Share	Jan. - Sep. 2004	% Share	Jan. - Sep. 2003	% Share	%Change 2004/03
U.S.A	43,794	67.4%	785,990	71.6%	747,032	72.7%	5.2%
CANADA	3,465	5.3%	77,823	7.1%	69,411	6.8%	12.1%
U.K.	9,407	14.5%	120,475	11.0%	109,134	10.6%	10.4%
EUROPE	4,042	6.2%	59,685	5.4%	51,523	5.0%	15.8%
OTHERS	4,232	6.5%	53,062	4.8%	50,007	4.9%	6.1%
Total	64,940	100.0%	1,097,035	100.0%	1,027,107	100.0%	6.8%

TABLE 3

<u>AVERAGE LENGTH OF STAY (Nights)</u>				
<u>FOREIGN NATIONALS</u>				
	All Types of Accommodation		Hotel	
	2003	2004	2003	2004
January	10.1	9.8	6.6	6.7
February	8.8	8.9	6.3	6.5
March	8.5	8.6	6.1	6.2
April	8.9	8.7	6.2	6.1
May	9.2	8.7	5.9	6.3
June	10.5	10.2	6.2	6.3
July	11.5	10.7	6.7	6.7
August	10.4	10.1	6.7	6.9
September	10.5	11.5	6.5	6.4
Jan. - Sep.	9.8	9.6	6.3	6.4

Note: LENGTH OF STAY IS BASED ON INTENDED LENGTH OF STAY

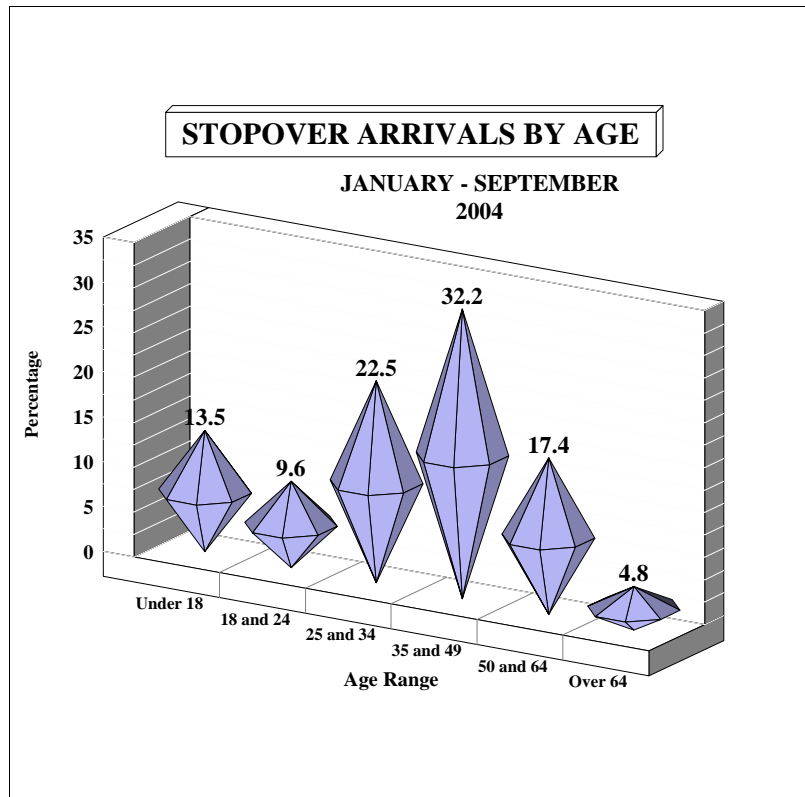


Fig. 3

AGE DISTRIBUTION OF STOPOVER ARRIVALS

Age	SEPTEMBER		JAN. - SEP.		JAN. - SEP.		%Change 2004/03
	2004	% Share	2004	% Share	2003	% Share	
Under 18	5,514	8.5	148,165	13.5	131,022	12.8	13.1%
18 and 24	5,431	8.4	104,851	9.6	99,712	9.7	5.2%
25 and 34	17,951	27.6	246,938	22.5	242,498	23.6	1.8%
35 and 49	20,366	31.4	353,560	32.2	332,016	32.3	6.5%
50 and 64	11,939	18.4	190,843	17.4	175,488	17.1	8.7%
Over 64	3,739	5.8	52,678	4.8	46,371	4.5	13.6%
Total	64,940	100.0	1,097,035	100.0	1,027,107	100.0	6.8%

TABLE 4

**CRUISE PASSENGER ARRIVALS BY MONTH AND PORT OF CALL
JANUARY - SEPTEMBER 2004**

	MONTEGO BAY		% Change 2004/03		OCHO RIOS		% Change 2004/03		2004 TOTAL		2003 TOTAL		% Change 2004/03	
	CALLS	PAX	CALLS	PAX	CALLS	PAX	CALLS	PAX	CALLS	PAX	CALLS	PAX	CALLS	PAX
January	22	34,283	-12.0%	-21.8%	42	89,072	20.0%	18.8%	67	124,650	60	118,834	11.7%	4.9%
February	24	37,643	0.0%	-3.5%	31	77,443	-11.4%	0.1%	56	115,351	60	116,451	-6.7%	-0.9%
March	23	41,704	-14.8%	8.2%	34	86,847	-17.1%	-3.4%	58	129,266	69	128,758	-15.9%	0.4%
April	17	35,901	-10.5%	6.8%	29	73,843	-3.3%	-0.8%	46	109,744	49	108,009	-6.1%	1.6%
Jan. - Apr.	86	149,531	-9.5%	-3.5%	136	327,205	-3.5%	3.3%	227	479,011	238	472,052	-4.6%	1.5%
May	5	16,052	-28.6%	-5.1%	18	48,372	0.0%	2.0%	23	64,424	25	64,350	-8.0%	0.1%
June	8	24,499	33.3%	72.4%	18	51,928	5.9%	3.0%	26	76,427	24	64,812	8.3%	17.9%
July	5	17,453	0.0%	-0.9%	17	50,750	-22.7%	-23.7%	22	68,203	27	84,154	-18.5%	-19.0%
August	5	17,098	0.0%	18.0%	18	52,131	12.5%	7.2%	23	69,229	21	63,121	9.5%	9.7%
September	7	20,224	75.0%	60.9%	11	28,077	-47.6%	-49.4%	18	48,301	25	68,058	-28.0%	-29.0%
May - Sep.	30	95,326	11.1%	25.8%	82	231,258	-12.8%	-13.9%	112	326,584	122	344,495	-8.2%	-5.2%
Jan. - Sep.	116	244,857	-4.9%	6.1%	218	558,463	-7.2%	-4.6%	339	805,595	360	816,547	-5.8%	-1.3%

- * Note:
1. During the month of January three Cruise Ship calls with 1,668 Cruise passengers visited two ports.
 2. Included in the total Cruise passengers for the month of January, 3 calls with 1,295 passengers visited Port Antonio.
 3. During the month of February 1 Cruise Ship call with 1,174 Cruise passengers visited two ports.
 4. Included in the total Cruise passengers for the month of February, 1 calls with 265 passengers visited Port Antonio.
 5. Included in the total Cruise passengers for the month of March, 1 call with 715 passengers visited Port Antonio.
 6. During the month of April 1 Cruise Ship call with 1,181 Cruise passengers visited two ports.

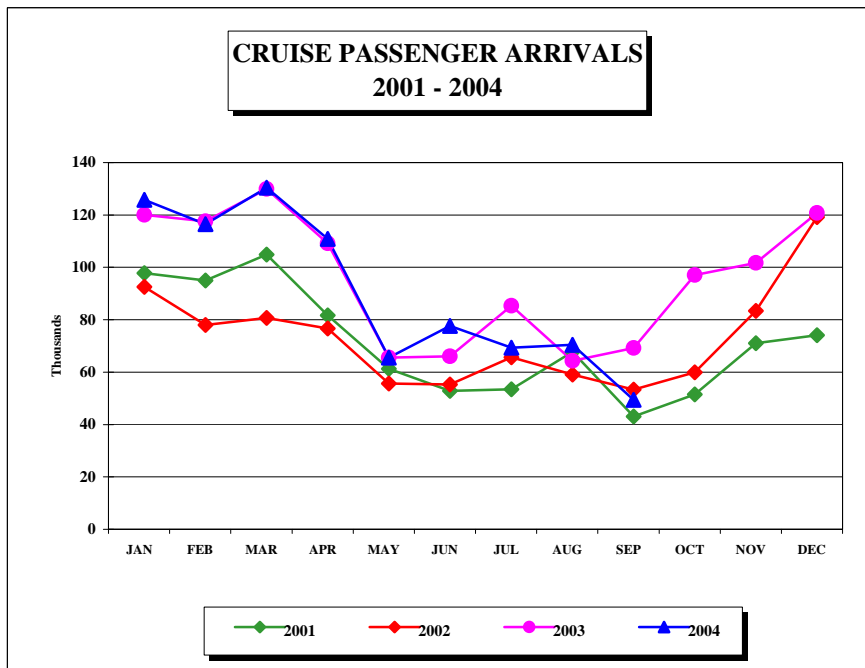


FIG. 4

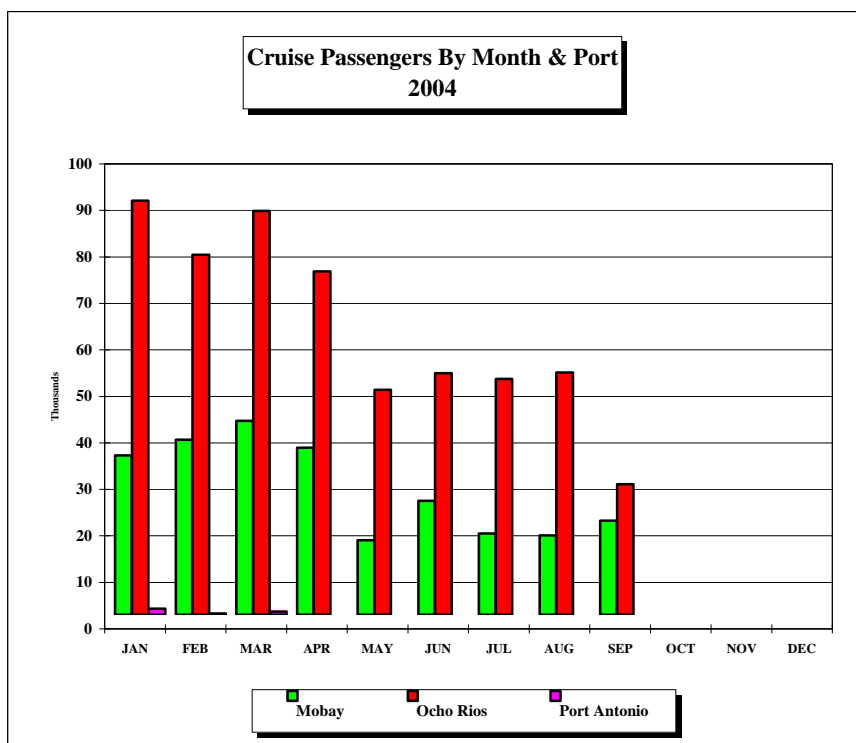


FIG. 4a

TABLE 5A
LANDED TOURISTS BY SCHEDULED & CHARTERED AIRLINES

	SEPTEMBER 2004			JANUARY - SEPTEMBER 2004		
	SCHEDULED AIRLINES	CHARTERED AIRLINES	TOTAL STOPOVERS	SCHEDULED AIRLINES	CHARTERED AIRLINES	TOTAL STOPOVERS
U.S.A.						
<u>NORTHEAST (NEW YORK)</u>						
Connecticut	1,064	0	1,064	20,771	188	20,959
Delaware	254	0	254	4,260	18	4,278
Maine	84	0	84	2,544	23	2,567
Maryland	1,908	0	1,908	31,361	328	31,689
Massachusetts	1,036	0	1,036	25,735	435	26,170
New Hampshire	186	0	186	3,848	73	3,921
New Jersey	2,569	0	2,569	51,946	336	52,282
New York	8,298	15	8,313	136,466	1,516	137,982
Pennsylvania	2,341	2	2,343	45,089	665	45,754
Rhode Island	134	0	134	3,244	26	3,270
Vermont	47	0	47	1,519	23	1,542
Virginia	1,014	0	1,014	17,366	298	17,664
Washington D.C.	302	0	302	4,174	46	4,220
West Virginia	84	0	84	1,753	68	1,821
Total	19,321	17	19,338	350,076	4,043	354,119
<u>MIDWEST (CHICAGO)</u>						
Illinois	1,834	231	2,065	24,852	15,132	39,984
Indiana	542	5	547	8,889	1,656	10,545
Iowa	206	12	218	4,637	1,762	6,399
Kansas	297	2	299	3,852	396	4,248
Kentucky	262	6	268	4,576	213	4,789
Michigan	756	16	772	17,395	5,108	22,503
Minnesota	387	0	387	10,813	5,316	16,129
Missouri	568	283	851	6,720	10,443	17,163
Nebraska	216	0	216	3,641	92	3,733
North Dakota	48	0	48	1,127	296	1,423
Ohio	994	4	998	14,941	1,104	16,045
South Dakota	50	0	50	1,312	161	1,473
Wisconsin	403	78	481	12,828	9,282	22,110
Total	6,563	637	7,200	115,583	50,961	166,544

TABLE 5A
LANDED TOURISTS BY SCHEDULED & CHARTERED AIRLINES

SEPTEMBER 2004

JANUARY - SEPTEMBER 2004

	SCHEDULED AIRLINES	CHARTERED AIRLINES	TOTAL STOPOVERS	SCHEDULED AIRLINES	CHARTERED AIRLINES	TOTAL STOPOVERS
<u>SOUTH (MIAMI)</u>						
Alabama	326	0	326	5,658	17	5,675
Arkansas	142	0	142	2,350	201	2,551
Florida	6,944	4	6,948	92,326	167	92,493
Georgia	2,288	0	2,288	33,711	64	33,775
Louisiana	303	0	303	4,792	185	4,977
Mississippi	145	3	148	2,568	33	2,601
North Carolina	937	0	937	14,784	186	14,970
Oklahoma	254	1	255	2,579	1,432	4,011
South Carolina	506	0	506	6,602	43	6,645
Tennessee	604	2	606	9,726	106	9,832
Texas	1,613	0	1,613	24,052	6,900	30,952
	<u>14,062</u>	<u>10</u>	<u>14,072</u>	<u>199,148</u>	<u>9,334</u>	<u>208,482</u>
<u>WEST (LOS ANGELES)</u>						
Alaska	21	0	21	262	12	274
Arizona	208	1	209	3,709	77	3,786
California	2,043	5	2,048	36,119	212	36,331
Colorado	216	2	218	4,200	1,640	5,840
Hawaii	19	0	19	216	5	221
Idaho	32	0	32	648	4	652
Montana	27	0	27	637	12	649
Nevada	139	0	139	1,910	31	1,941
New Mexico	42	0	42	805	31	836
Oregon	84	0	84	1,713	19	1,732
Utah	85	2	87	1,102	16	1,118
Washington	229	2	231	3,027	63	3,090
Wyoming	27	0	27	311	64	375
	<u>3,172</u>	<u>12</u>	<u>3,184</u>	<u>54,659</u>	<u>2,186</u>	<u>56,845</u>
TOTAL U.S.A.	<u>43,118</u>	<u>676</u>	<u>43,794</u>	<u>719,466</u>	<u>66,524</u>	<u>785,990</u>

TABLE 5A
LANDED TOURISTS BY SCHEDULED & CHARTERED AIRLINES

SEPTEMBER 2004

JANUARY - SEPTEMBER 2004

	SCHEDULED AIRLINES	CHARTERED AIRLINES	TOTAL STOPOVERS	SCHEDULED AIRLINES	CHARTERED AIRLINES	TOTAL STOPOVERS
<u>CANADA (TORONTO)</u>						
Alberta	142	5	147	4,392	85	4,477
British Columbia	86	7	93	2,269	67	2,336
Manitoba	40	0	40	1,870	58	1,928
New Brunswick	23	2	25	816	33	849
Newfoundland	4	0	4	388	39	427
Nova Scotia	44	0	44	1,486	41	1,527
Ontario	2,270	593	2,863	39,987	16,836	56,823
P.E. Island	0	0	0	144	0	144
Quebec	214	10	224	6,134	2,115	8,249
Saskatchewan	20	0	20	882	14	896
Other Canada	5	0	5	145	22	167
	2,848	617	3,465	58,513	19,310	77,823
<u>LONDON OFFICE</u>						
<u>Northern Europe</u>						
U.K.	6,382	3,025	9,407	76,736	43,739	120,475
Denmark	42	0	42	491	11	502
Finland	18	1	19	284	9	293
Norway	15	0	15	495	12	507
Sweden	39	3	42	747	30	777
<u>Southern Europe</u>						
Greece	11	0	11	145	11	156
Italy	363	296	659	8,454	11,080	19,534
Portugal	17	31	48	220	478	698
Spain	77	1,141	1,218	945	7,511	8,456
<u>Western Europe</u>						
Austria	71	52	123	1,472	641	2,113
Belgium	42	290	332	1,070	2,037	3,107
France	115	24	139	1,953	299	2,252
Germany	670	28	698	12,465	164	12,629
Luxemburg	5	15	20	90	49	139
Netherlands	143	22	165	2,744	122	2,866
Switzerland	88	249	337	1,314	1,613	2,927
<u>Central/East Europe</u>						
Czechoslovakia	13	0	13	281	15	296
Hungary	46	2	48	170	15	185
Poland	39	0	39	553	9	562
Russia	29	0	29	698	15	713
Other Europe	44	1	45	758	215	973
	8,269	5,180	13,449	112,085	68,075	180,160

TABLE 5A
LANDED TOURISTS BY SCHEDULED & CHARTERED AIRLINES

SEPTEMBER 2004

JANUARY - SEPTEMBER 2004

	SCHEDULED AIRLINES	CHARTERED AIRLINES	TOTAL STOPOVERS	SCHEDULED AIRLINES	CHARTERED AIRLINES	TOTAL STOPOVERS
<u>OTHER COUNTRIES</u>						
<u>CENTRAL AMERICA</u>						
Mexico	71	0	71	1,172	719	1,891
Belize	20	0	20	375	0	375
Costa Rica	31	0	31	401	34	435
El Salvador	10	0	10	78	62	140
Guatemala	23	0	23	207	89	296
Honduras	15	0	15	154	37	191
Nicaragua	10	0	10	44	11	55
Panama	68	0	68	748	0	748
	<u>248</u>	<u>0</u>	<u>248</u>	<u>3,179</u>	<u>952</u>	<u>4,131</u>
<u>SOUTH AMERICA</u>						
Argentina	36	0	36	396	1	397
Bolivia	5	0	5	32	0	32
Brazil	54	0	54	678	5	683
Chile	19	0	19	325	2	327
Colombia	18	0	18	218	0	218
Ecuador	5	0	5	75	1	76
Guyana	79	0	79	1,332	2	1,334
Paraguay	0	0	0	16	0	16
Peru	20	0	20	216	1	217
Surinam	18	0	18	231	1	232
Uruguay	6	0	6	84	0	84
Venezuela	46	0	46	502	2	504
Other South America	0	0	0	1	0	1
Total Latin America	<u>306</u>	<u>0</u>	<u>306</u>	<u>4,106</u>	<u>15</u>	<u>4,121</u>
	<u>554</u>	<u>0</u>	<u>554</u>	<u>7,285</u>	<u>967</u>	<u>8,252</u>

TABLE 5A
LANDED TOURISTS BY SCHEDULED & CHARTERED AIRLINES

SEPTEMBER 2004

JANUARY - SEPTEMBER 2004

	SCHEDULED AIRLINES	CHARTERED AIRLINES	TOTAL STOPOVERS	SCHEDULED AIRLINES	CHARTERED AIRLINES	TOTAL STOPOVERS
CARIBBEAN						
Antigua	93	0	93	1,483	1	1,484
Bahamas	125	123	248	2,361	127	2,488
Barbados	279	0	279	4,342	2	4,344
Bermuda	94	0	94	1,592	2	1,594
British Virgin Is.	59	0	59	690	0	690
Cayman Is.	1,151	6	1,157	10,366	12	10,378
Dominica	20	0	20	254	0	254
Grenada	36	0	36	471	1	472
Monsterrat	2	0	2	86	0	86
St. Kitts/Nevis/Anguilla	40	0	40	711	0	711
St. Lucia	132	0	132	1,570	0	1,570
St. Vincent	37	0	37	519	1	520
Turks & Caicos Is.	55	8	63	858	8	866
Trinidad & Tobago	355	1	356	5,609	4	5,613
Comm. Caribbean	2,478	138	2,616	30,912	158	31,070
Aruba	11	0	11	363	0	363
Bonaire	2	0	2	73	0	73
Cuba	30	0	30	298	4	302
Curacao	44	0	44	854	0	854
Dominican Republic	78	0	78	887	4	891
Guadelope	9	0	9	125	1	126
Haiti	15	0	15	316	0	316
Puerto Rico	42	0	42	1,194	3	1,197
St. Maarten	46	0	46	622	0	622
All other Caribbean	21	0	21	537	0	537
Other Caribbean	298	0	298	5,269	12	5,281
TOTAL CARIBBEAN	2,776	138	2,914	36,181	170	36,351
OTHER COUNTRIES						
African Countries	70	4	74	901	22	923
Isreal	74	2	76	614	8	622
Saudi Arabia	1	0	1	24	0	24
Turkey	15	0	15	130	6	136
Other Middle East	28	0	28	250	17	267
India & Pakistan	21	2	23	411	13	424
Japan	328	0	328	3,378	6	3,384
China	38	0	38	390	4	394
Taiwan	6	0	6	41	1	42
Korea	8	0	8	160	4	164
Philippines	44	0	44	425	1	426
Singapore	2	0	2	73	1	74
Other Asia	34	0	34	260	3	263
Australia	75	1	76	1,078	8	1,086
New Zealand	9	1	10	205	4	209
All Other Ctries	1	0	1	21	0	21
	754	10	764	8,361	98	8,459
GRAND TOTAL	58,319	6,621	64,940	941,891	155,144	1,097,035

Stopover Arrivals
By Intended Resort Area of Stay

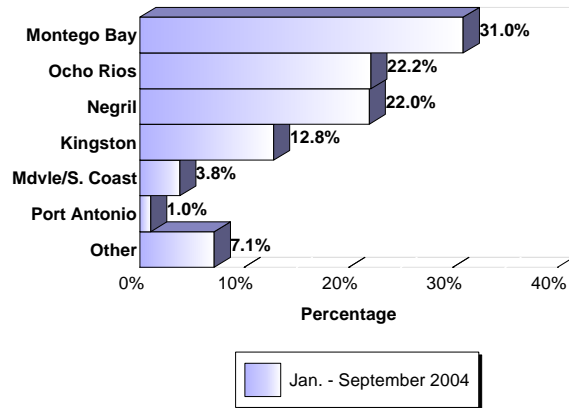


Fig. 5

STOPOVER ARRIVALS BY INTENDED AREA OF STAY

Area	SEPTEMBER		JAN.- SEP.		JAN.- SEP.		%Change 2004/03
	2004	%Share	2004	%Share	2003	%Share	
Montego Bay	18,952	29.2%	340,174	31.0%	321,936	31.3%	5.7%
Ocho Rios	13,602	20.9%	243,109	22.2%	228,559	22.3%	6.4%
Negril	12,608	19.4%	241,338	22.0%	213,267	20.8%	13.2%
Kingston	10,168	15.7%	140,834	12.8%	139,435	13.6%	1.0%
Mdvle/S. Coast	3,094	4.8%	42,035	3.8%	38,542	3.8%	9.1%
Port Antonio	601	0.9%	11,322	1.0%	10,697	1.0%	5.8%
Other	5,915	9.1%	78,223	7.1%	74,671	7.3%	4.8%
Total	64,940	100.0%	1,097,035	100.0%	1,027,107	100.0%	6.8%