

MONTHLY STATISTICAL REPORT

Volume X111, Issue 1X

September 2003

TOURIST (Stopovers)

Stopover arrivals in September 2003 were **76,535**, an increase of **1%** over the **75,918** recorded for September 2002. To date, for the first five months of summer, (May to September 2003), stopover arrivals increased by **5%**, with a total of **572,884** compared to **545,323** for the same period in 2002.

Cumulatively, stopovers for the January to September period increased by **6%**. There was a total of **1,027,108** stopovers for the period compared to **966,319** in 2002.

United States

Stopover arrivals from the United States market declined by **1%** in September with a total of **51,019** visitors compared to the **51,625** visitors who came in September 2002. With the exception of the Northeast, which increased by **2%** all the other three marketing regions recorded declines. The Midwest declined by **1%**, the South by **4%**, and the West **5%**.

For the summer period to date, the US market recorded an increase of **4%**. Three of the US marketing regions recorded increases for the period. The Northeast was up by **8%**, the Midwest by **6%**, and the West by **2%**. The South declined by **3%**.

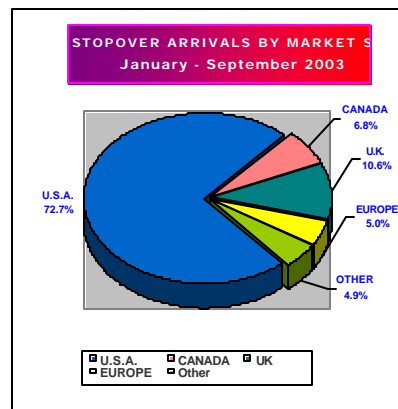
For the January to September period the US market increased by **4%**. Total visitors from this market for the period was **747,032** compared to **715,433** for the corresponding period in 2002. The Northeast and the Midwest each increased by **8%**, and the West by **1%**. The South declined by **2%**.

Canada

In September 2003, the Canadian market declined by **8%** with a total of **4,062** stopovers compared to **4,422** stopovers who came in September 2002. The leading province Ontario declined by **7%**, and the second most important visitor-producing province Quebec increased by **5%**.

For the first five months of summer, May to September, a total of **27,600** stopovers came from this market for the period compared to **30,916** in 2002, a decline of **11%**.

Cumulatively, the Canadian market declined by **5%** in the January to September period with a total of **69,411** stopovers compared to **73,179** in 2002. The notable increases were from Manitoba **69%**, Nova Scotia **31%**, British Columbia **7%**, and Alberta was up by **3%**.



Europe

The European market continued to perform well in September 2003 by recording an increase of **12%** over the same period in 2002. The market provided a total of **16,708** stopover

visitors compared to the **14,976** recorded in September 2002. While the United Kingdom increased by **9%**, Germany declined by **19%**. Italy however, is ahead of Germany, as the second most visitor-producing country market. A total of **1,192** stopovers came from Italy representing an increase of **42%**, followed by Spain with **1,202** visitors, an increase of **23%**. All the other main European country markets recorded increases.

During the summer period, May to September, the market increased by **23%** with **92,948** visitors compared to **75,667** visitors who came in the same period of 2002.

Cumulatively, for the January to September period, the European market increased by **24%**. Total stopovers for the period were **160,657** compared to **129,271** in 2002. Both the United Kingdom and Germany recorded increases. The United Kingdom with a total of **109,134** stopovers recorded an increase of **20%** while Germany with **11,342** visitors recorded an increase of **11%**. The Italian market again surpassed Germany's performance with **18,938** visitors, an increase of **90%** over the same period in 2002.

Stopover arrivals increased by **1%** in September. Cumulatively, stopover arrivals increased by **6%** in the January to September period.

Cruise Passenger arrivals increased by **35%** in September and by **6%** in the January to September period.

Latin America

The Latin American market increased by **10%** in September with a total of **910** stopovers compared to **826** in September 2002. All the leading countries recorded increases. Argentina increased by **78%**, Chile by **37%**, Brazil by **9%**, Colombia by **19%**, and Mexico by **2%**.

For the January to September period, the Latin American market declined by **8%** with a total of **8,389** visitors compared to **9,157** for the corresponding period in 2002.

The Caribbean

Visitors to Jamaica from the Caribbean region declined by **4%** in September. A total of **3,040** visitors from other Caribbean countries visited Jamaica, down from **3,152** in September 2002.

The major Caribbean countries which provided visitors to Jamaica in September were: the Cayman Islands (**750**), Trinidad and Tobago (**603**), Barbados (**409**), the Bahamas (**202**), Antigua (**125**), Bermuda (**83**), and St. Lucia (**178**). While Barbados, Bermuda and Trinidad and Tobago recorded increases in September, all the other major Caribbean countries recorded declines against September 2002.

Cumulatively, the Caribbean stopover arrivals to Jamaica in the January to September period increased by **6%** moving from **30,794** in 2002 to **32,570** in 2003. In the period under review, the top Caribbean countries that provided stopover visitors to Jamaica were the Cayman Islands with **8,621**, Trinidad and Tobago with **5,592**, Barbados with **4,104** and the Bahamas with **2,191**.

Japan

The Japanese market declined by **22%** in September with a total of **323** stopovers compared to **414** in September 2002 but was up by **6%** against the **304** for the corresponding period in 2001.

For the January to September period, Japan declined by **15%** with **2,846** visitors compared to **3,346** in 2002.

Other Countries

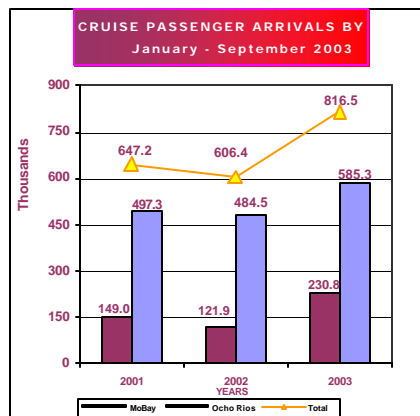
Of the other countries, Australia with a total of **1,730** stopovers in January to September period recorded an increase of **55%** against the **1,118** who came in January to September 2002.

Market Share

The market share of stopover visitors for the January to September period were as follows:

USA **72.7%**; Canada **6.8%**; UK **10.6%**; Continental Europe **5.0%** the Caribbean **3.2%**; Latin America **0.8%**; Japan **0.3%** and Other Countries **0.6%**

Cruise Passengers



A total of **68,058** cruise passengers visited Jamaica in September 2003. This represents a **30%** increase against the **52,177** recorded for September 2002. Cumulatively, a total of **816,547** cruise passengers visited Jamaica in the January to September period, a **35%** increase against the **606,392** recorded for the corresponding period in 2002.

A total of **55,492** cruise passengers visited the port of Ocho Rios in September, an increase of **28%** over the **43,487** recorded for September 2002. For the January to September period cruise passenger arrivals to the port of Ocho Rios was **585,257** an increase of **21%** against the **484,466** for the corresponding period in 2002.

Montego Bay recorded a total of **12,566** cruise passengers for the month of September 2003, an increase of some **45%** against the **8,690** recorded for September 2002. Cumulatively, for the January to September period, cruise passenger arrivals to Montego Bay was **230,772** an increase of **89%** against the **121,854** recorded for the same period in 2002.

Length of Stay

The average length of stay of stopovers in September was **10.5** nights compared to **11.0** nights recorded for September 2002. The average length of stay in hotels was **6.5** nights against the **6.4** nights in September 2002. Cumulatively, the average length of stay for the January to September period was **9.8** nights compared to **10.0** nights recorded for the similar period in 2002.

First and Repeat Visitors

Approximately **54%** or **38,776** of the **71,502** foreign nationals who visited Jamaica in September were first-time visitors and the other **46%** or **32,726** were repeat guests.

Cumulatively, in the January to September period, some **55%** of the **965,377** Foreign Nationals who visited the island were first-time guests and **45%** were repeat guests.

TABLE 1
TOURIST ARRIVALS
January - September
2003

Month	<----- Stopovers ----->						Total		
	Foreign Nationals	+/- 2003/02	+/- 2003/01	Non-Resident Jamaicans	+/- 2003/02	+/- 2003/01	Stopover Arrivals	+/- 2003/02	+/- 2003/01
January	95,875	12.6%	-0.9%	5,431	9.0%	5.2%	101,306	12.4%	-0.6%
February	106,440	11.7%	-1.0%	5,018	6.0%	-14.3%	111,458	11.4%	-1.7%
March	124,143	0.4%	-8.9%	5,342	-18.1%	-23.1%	129,485	-0.5%	-9.6%
April	104,597	11.0%	-10.9%	7,377	14.6%	-10.3%	111,974	11.2%	-10.9%
Jan.-Apr.	431,055	8.2%	-5.9%	23,168	2.2%	-11.5%	454,223	7.9%	-6.2%
May	95,809	3.4%	-2.3%	6,212	-7.1%	-7.7%	102,021	2.7%	-2.6%
June	114,081	7.6%	2.7%	7,990	4.2%	-12.0%	122,071	7.4%	1.6%
July	133,578	5.5%	9.9%	10,461	-5.6%	9.3%	144,039	4.6%	9.8%
August	119,352	8.9%	14.2%	8,867	-2.3%	-3.2%	128,219	8.0%	12.8%
September	71,502	1.3%	21.9%	5,032	-5.7%	3.3%	76,534	0.8%	20.5%
May.-Sep.	534,322	5.7%	8.2%	38,562	-3.2%	-2.2%	572,884	5.1%	7.4%
Jan.-Sep	965,377	6.8%	1.4%	61,730	-1.3%	-5.9%	1,027,107	6.3%	1.0%

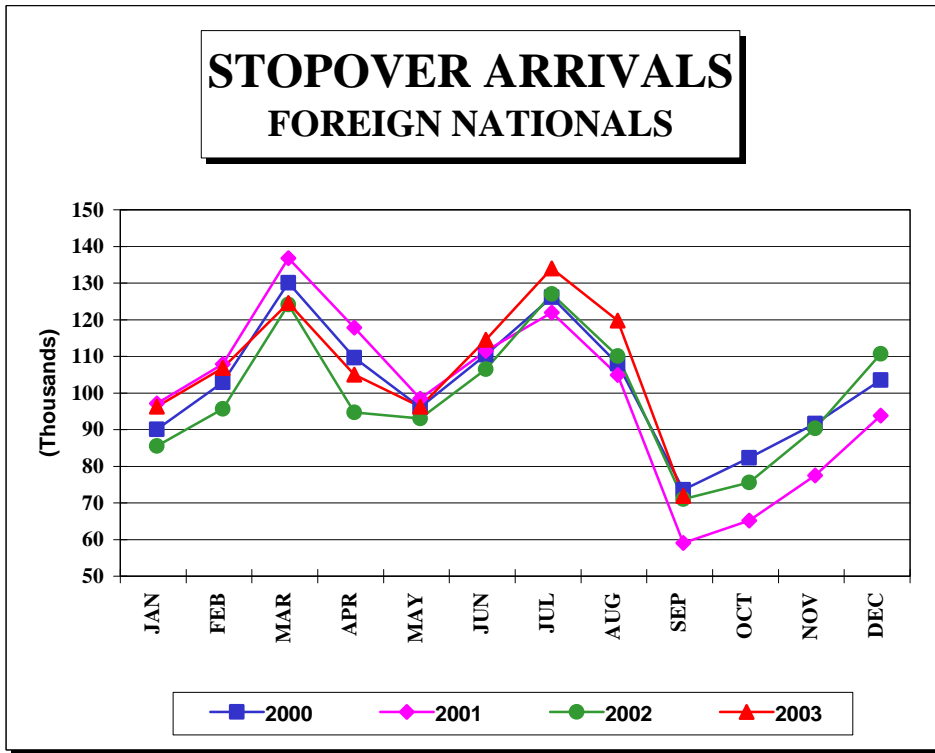


FIG. 1

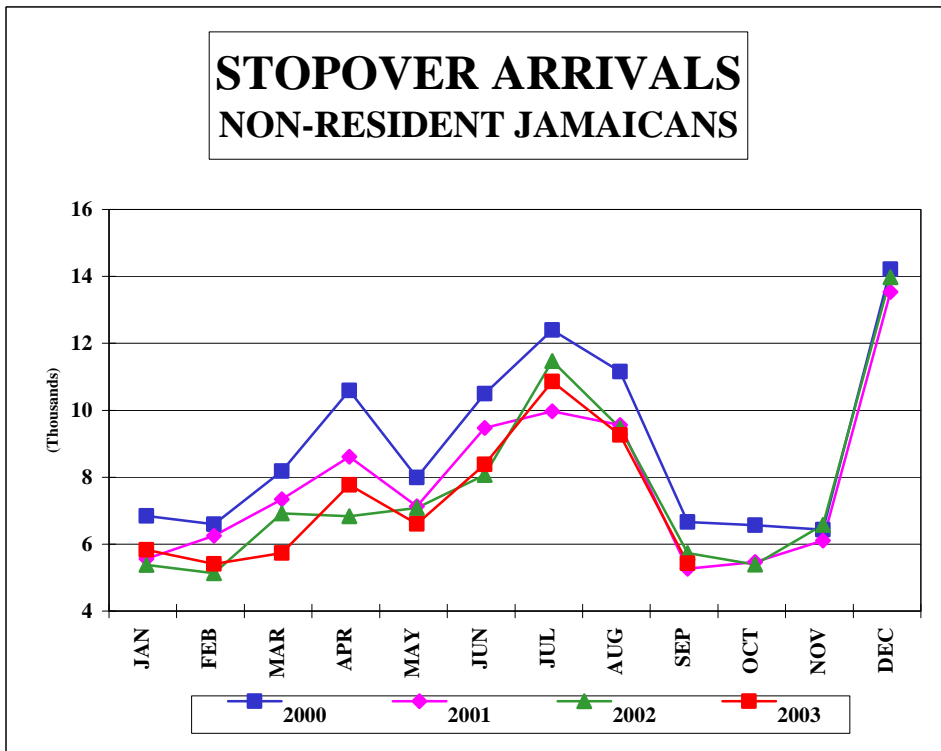


FIG. 1a

TABLE 1.1**First & Repeat Visit to Jamaica**

FOREIGN NATIONALS

2003

	Arrivals				TOTAL	% SHARE	
	First Visit	+/-	Repeat Visit	+/-		First Visit	Repeat Visit
Jan.	51,389	18.9	44,486	6.2	95,875	53.6	46.4
Feb.	56,644	12.2	49,796	11.1	106,440	53.2	46.8
Mar.	74,063	2.2	50,080	-2.3	124,143	59.7	40.3
Apr.	57,325	17.3	47,272	4.1	104,597	54.8	45.2
Jan.-Apr.	239,421	11.4	191,634	4.5	431,055	55.5	44.5
May	54,403	11.0	41,406	-5.0	95,809	56.8	43.2
Jun.	65,139	5.4	48,942	10.7	114,081	57.1	42.9
Jul.	70,593	2.4	62,985	9.2	133,578	52.8	47.2
Aug.	65,708	8.8	53,644	8.9	119,352	55.1	44.9
Sept.	38,776	0.4	32,726	2.4	71,502	54.2	45.8
May-Sep.	294,619	5.7	239,703	5.7	534,322	55.1	44.9
Jan.-Sep.	534,040	8.2	431,337	5.2	965,377	55.3	44.7

TABLE 1.2
STOPOVER ARRIVALS BY MARKET REGION
AND MONTH OF ARRIVAL 2003

	U.S.A.					Canada	U.K. Europe	Latin America	Caribbean	Asia	Other Countries	Total
	Northeast	Mid-West	South	West	Total							
January	28,497	21,351	14,638	4,110	68,596	11,589	16,286	1,087	2,821	635	292	101,306
February	35,006	25,007	14,940	4,002	78,955	11,506	16,812	777	2,594	578	236	111,458
March	40,262	29,316	21,505	5,449	96,532	10,779	17,088	892	3,197	695	302	129,485
April	37,597	17,405	19,687	5,514	80,203	7,937	17,523	1,041	4,324	532	414	111,974
Jan.-Apr.	141,362	93,079	70,770	19,075	324,286	41,811	67,709	3,797	12,936	2,440	1,244	454,223
May	30,120	14,016	25,523	5,353	75,012	5,276	16,282	968	3,232	449	802	102,021
June	34,991	16,810	35,215	7,646	94,662	4,917	17,017	871	3,676	522	406	122,071
July	48,733	15,071	35,202	8,459	107,465	7,175	21,608	1,051	5,249	668	823	144,039
August	47,421	13,396	24,911	8,860	94,588	6,170	21,333	792	4,437	509	390	128,219
September	20,293	9,522	16,889	4,315	51,019	4,062	16,708	909	3,040	599	198	76,535
May - Sep.	181,558	68,815	137,740	34,633	422,746	27,600	92,948	4,591	19,634	2,747	2,619	572,885
Jan. - Sep.	322,920	161,894	208,510	53,708	747,032	69,411	160,657	8,388	32,570	5,187	3,863	1,027,108
+/- %	7.7%	7.9%	-1.8%	0.8%	4.4%	-5.1%	24.3%	-8.4%	5.8%	0.4%	16.4%	6.3%

TABLE 2

TOTAL STOPOVER ARRIVALS BY PERMANENT RESIDENCE

	SEPTEMBER							JANUARY - SEPTEMBER						
	2000	2001	2002	2003	% Change			2000	2001	2002	2003	% Change		
					2003/02	2003/01	2003/00					2003/02	2003/01	2003/00
U.S.A.														
<u>NORTHEAST (NEW YORK)</u>														
Connecticut	1,117	864	944	1,194	26.5	38.2	6.9	17,023	18,263	16,698	18,324	9.7	0.3	7.6
Delaware	370	181	329	238	-27.7	31.5	-35.7	3,995	4,203	3,710	3,694	-0.4	-12.1	-7.5
Maine	63	104	131	100	-23.7	-3.8	58.7	1,780	2,175	1,823	1,884	3.3	-13.4	5.8
Maryland	2,140	1,643	2,112	2,027	-4.0	23.4	-5.3	25,567	27,330	27,230	29,537	8.5	8.1	15.5
Massachusetts	974	969	1,076	1,126	4.6	16.2	15.6	21,367	25,839	21,597	22,437	3.9	-13.2	5.0
New Hampshire	137	120	191	190	-0.5	58.3	38.7	3,055	3,918	3,080	3,292	6.9	-16.0	7.8
New Jersey	3,165	2,192	2,576	2,827	9.7	29.0	-10.7	41,843	44,232	41,679	46,768	12.2	5.7	11.8
New York	9,021	7,131	8,071	8,118	0.6	13.8	-10.0	127,168	126,477	120,677	128,152	6.2	1.3	0.8
Pennsylvania	2,727	2,025	2,938	2,751	-6.4	35.9	0.9	37,437	40,602	39,467	42,717	8.2	5.2	14.1
Rhode Island	107	97	164	164	0.0	69.1	53.3	2,123	2,467	2,367	2,648	11.9	7.3	24.7
Vermont	37	39	34	43	26.5	10.3	16.2	1,207	1,434	971	1,131	16.5	-21.1	-6.3
Virginia	1,058	771	1,057	1,158	9.6	50.2	9.5	15,563	15,690	15,296	16,781	9.7	7.0	7.8
Washington D.C.	327	225	288	258	-10.4	14.7	-21.1	4,058	4,162	3,868	4,289	10.9	3.1	5.7
West Virginia	97	79	78	99	26.9	25.3	2.1	1,416	1,624	1,281	1,266	-1.2	-22.0	-10.6
Total	21,340	16,440	19,989	20,293	1.5	23.4	-4.9	303,602	318,416	299,744	322,920	7.7	1.4	6.4
<u>MIDWEST (CHICAGO)</u>														
Illinois	3,526	2,014	2,850	2,418	-15.2	20.1	-31.4	45,708	40,991	38,855	39,995	2.9	-2.4	-12.5
Indiana	788	565	589	701	19.0	24.1	-11.0	10,981	9,872	9,482	10,731	13.2	8.7	-2.3
Iowa	296	238	325	323	-0.6	35.7	9.1	5,104	5,443	5,505	6,034	9.6	10.9	18.2
Kansas	247	179	345	316	-8.4	76.5	27.9	3,929	4,015	3,514	3,452	-1.8	-14.0	-12.1
Kentucky	333	288	372	389	4.6	35.1	16.8	4,440	4,230	4,815	4,839	0.5	14.4	9.0
Michigan	1,117	776	1,048	1,072	2.3	38.1	-4.0	23,256	23,392	19,063	22,322	17.1	-4.6	-4.0
Minnesota	414	356	538	503	-6.5	41.3	21.5	15,884	15,205	14,129	15,906	12.6	4.6	0.1
Missouri	1,508	630	1,220	1,393	14.2	121.1	-7.6	16,675	14,196	15,040	17,132	13.9	20.7	2.7
Nebraska	201	175	319	355	11.3	102.9	76.6	2,900	3,428	3,061	3,531	15.4	3.0	21.8
North Dakota	28	22	39	61	56.4	177.3	117.9	849	832	850	903	6.2	8.5	6.4
Ohio	1,105	784	1,099	1,220	11.0	55.6	10.4	16,458	15,762	15,859	15,648	-1.3	-0.7	-4.9
South Dakota	38	36	34	61	79.4	69.4	60.5	975	964	908	1,321	45.5	37.0	35.5
Wisconsin	818	662	788	710	-9.9	7.3	-13.2	21,649	21,477	18,947	20,080	6.0	-6.5	-7.2
Total	10,419	6,725	9,566	9,522	-0.5	41.6	-8.6	168,808	159,807	150,028	161,894	7.9	1.3	-4.1

TABLE 2

TOTAL STOPOVER ARRIVALS BY PERMANENT RESIDENCE

	SEPTEMBER							JANUARY - SEPTEMBER						
	2000	2001	2002	2003	% Change			2000	2001	2002	2003	% Change		
					2003/02	2003/01	2003/00					2003/02	2003/01	2003/00
<u>SOUTH (MIAMI)</u>														
Alabama	453	312	479	461	-3.8	47.8	1.8	6,010	5,607	5,576	6,016	7.9	7.3	0.1
Arkansas	218	106	202	172	-14.9	62.3	-21.1	2,457	2,299	2,272	2,388	5.1	3.9	-2.8
Florida	8,271	6,931	8,326	8,287	-0.5	19.6	0.2	93,279	92,202	92,416	92,164	-0.3	-0.0	-1.2
Georgia	3,089	2,328	3,050	2,753	-9.7	18.3	-10.9	31,000	32,931	36,135	33,581	-7.1	2.0	8.3
Louisiana	442	311	404	336	-16.8	8.0	-24.0	6,273	6,287	6,056	5,589	-7.7	-11.1	-10.9
Mississippi	180	122	145	194	33.8	59.0	7.8	2,864	2,549	2,567	2,385	-7.1	-6.4	-16.7
North Carolina	1,077	910	1,106	1,142	3.3	25.5	6.0	13,346	13,869	13,220	14,147	7.0	2.0	6.0
Oklahoma	303	230	229	229	0.0	-0.4	-24.4	3,902	3,415	3,506	3,561	1.6	4.3	-8.7
Puerto Rico	124	75	99	129	30.3	72.0	4.0	1,280	1,106	1,228	1,011	-17.7	-8.6	-21.0
South Carolina	524	417	520	490	-5.8	17.5	-6.5	5,739	6,279	6,106	6,327	3.6	0.8	10.2
Tennessee	733	572	776	746	-3.9	30.4	1.8	9,896	8,835	9,957	9,921	-0.4	12.3	0.3
Texas	2,131	2,087	2,181	1,950	-10.6	-6.6	-8.5	34,357	31,342	33,346	31,420	-5.8	0.2	-8.5
Total	17,545	14,401	17,517	16,889	-3.6	17.3	-3.7	210,403	206,721	212,385	208,510	-1.8	0.9	-0.9
<u>WEST (LOS ANGELES)</u>														
Alaska	20	15	23	20	-13.0	33.3	0.0	251	272	190	282	48.4	3.7	12.4
Arizona	627	433	300	270	-10.0	-37.6	-56.9	5,280	6,070	3,569	3,493	-2.1	-42.5	-33.8
California	2,910	2,114	2,982	2,795	-6.3	32.2	-4.0	34,718	33,783	34,003	34,117	0.3	1.0	-1.7
Colorado	291	264	335	347	3.6	31.4	19.2	5,540	5,502	5,529	5,079	-8.1	-7.7	-8.3
Hawaii	17	8	15	16	6.7	100.0	-5.9	189	197	167	185	10.8	-6.1	-2.1
Idaho	67	33	64	53	-17.2	60.6	-20.9	863	906	770	837	8.7	-7.6	-3.0
Montana	38	15	27	27	0.0	80.0	-28.9	423	499	492	605	23.0	21.2	43.0
Nevada	167	77	165	179	8.5	132.5	7.2	1,684	1,558	1,508	1,928	27.9	23.7	14.5
New Mexico	96	34	53	66	24.5	94.1	-31.3	857	909	748	733	-2.0	-19.4	-14.5
Oregon	212	99	174	131	-24.7	32.3	-38.2	2,072	1,800	1,811	1,653	-8.7	-8.2	-20.2
Utah	70	99	125	141	12.8	42.4	101.4	925	864	1,117	1,259	12.7	45.7	36.1
Washington	230	235	281	253	-10.0	7.7	10.0	3,566	3,370	3,083	3,216	4.3	-4.6	-9.8
Wyoming	13	8	9	17	88.9	112.5	30.8	319	286	289	321	11.1	12.2	0.6
Total	4,758	3,434	4,553	4,315	-5.2	25.7	-9.3	56,687	56,016	53,276	53,708	0.8	-4.1	-5.3
TOTAL U.S.A.	54,062	41,000	51,625	51,019	-1.2	24.4	-5.6	739,500	740,960	715,433	747,032	4.4	0.8	1.0

TABLE 2

TOTAL STOPOVER ARRIVALS BY PERMANENT RESIDENCE

	SEPTEMBER							JANUARY - SEPTEMBER						
	2000	2001	2002	2003	% Change			2000	2001	2002	2003	% Change		
					2003/02	2003/01	2003/00					2003/02	2003/01	2003/00
CANADA (TORONTO)														
Alberta	183	159	195	138	-29.2	-13.2	-24.6	3,312	3,416	2,763	2,847	3.0	-16.7	-14.0
British Columbia	181	167	142	141	-0.7	-15.6	-22.1	2,396	2,505	1,927	2,053	6.5	-18.0	-14.3
Manitoba	71	57	66	43	-34.8	-24.6	-39.4	2,078	2,221	1,279	2,166	69.4	-2.5	4.2
New Brunswick	40	17	46	16	-65.2	-5.9	-60.0	1,086	1,076	748	681	-9.0	-36.7	-37.3
Newfoundland	23	29	24	43	79.2	48.3	87.0	465	458	457	437	-4.4	-4.6	-6.0
Nova Scotia	61	67	47	41	-12.8	-38.8	-32.8	1,697	1,862	954	1,251	31.1	-32.8	-26.3
Ontario	3,426	3,544	3,552	3,300	-7.1	-6.9	-3.7	56,584	63,762	56,071	51,288	-8.5	-19.6	-9.4
P.E. Island	5	3	2	5	150.0	66.7	0.0	114	111	102	137	34.3	23.4	20.2
Quebec	525	297	300	315	5.0	6.1	-40.0	8,359	10,379	8,095	7,501	-7.3	-27.7	-10.3
Saskatchewan	32	19	31	10	-67.7	-47.4	-68.8	777	1,002	550	886	61.1	-11.6	14.0
Other Canada	20	16	17	10	-41.2	-37.5	-50.0	275	349	233	164	-29.6	-53.0	-40.4
Total	4,567	4,375	4,422	4,062	-8.1	-7.2	-11.1	77,143	87,141	73,179	69,411	-5.1	-20.3	-10.0
LONDON OFFICE														
Northern Europe														
U.K.	11,375	9,911	10,978	11,911	8.5	20.2	4.7	100,151	93,978	90,827	109,134	20.2	16.1	9.0
Denmark	34	30	21	37	76.2	23.3	8.8	736	579	387	302	-22.0	-47.8	-59.0
Finland	15	13	9	19	111.1	46.2	26.7	280	284	287	333	16.0	17.3	18.9
Norway	35	44	58	33	-43.1	-25.0	-5.7	700	601	661	616	-6.8	2.5	-12.0
Sweden	43	68	48	67	39.6	-1.5	55.8	973	962	774	690	-10.9	-28.3	-29.1
Southern Europe														
Greece	18	21	15	16	6.7	-23.8	-11.1	380	149	229	217	-5.2	45.6	-42.9
Italy	764	658	842	1,192	41.6	81.2	56.0	11,832	10,679	9,947	18,938	90.4	77.3	60.1
Portugal	26	41	74	42	-43.2	2.4	61.5	390	319	764	380	-50.3	19.1	-2.6
Spain	118	524	975	1,202	23.3	129.4	918.6	996	3,212	5,252	6,005	14.3	87.0	502.9
Western Europe														
Austria	137	138	82	86	4.9	-37.7	-37.2	1,976	1,689	1,228	1,442	17.4	-14.6	-27.0
Belgium	80	86	74	277	274.3	222.1	246.3	805	823	908	1,816	100.0	120.7	125.6
France	112	109	103	160	55.3	46.8	42.9	2,845	1,971	2,005	2,016	0.5	2.3	-29.1
Germany	1,630	1,376	1,178	951	-19.3	-30.9	-41.7	18,780	14,982	10,219	11,342	11.0	-24.3	-39.6
Luxemburg	6	4	15	10	-33.3	150.0	66.7	79	67	88	99	12.5	47.8	25.3
Netherlands	399	266	179	311	73.7	16.9	-22.1	3,060	2,217	1,727	3,008	74.2	35.7	-1.7
Switzerland	169	163	150	144	-4.0	-11.7	-14.8	2,489	1,811	1,406	1,601	13.9	-11.6	-35.7
Central/East Europe														
Czechoslovakia	25	27	16	26	62.5	-3.7	4.0	146	239	230	244	6.1	2.1	67.1
Hungary	5	6	10	8	-20.0	33.3	60.0	127	115	184	123	-33.2	7.0	-3.1
Poland	69	25	48	72	50.0	188.0	4.3	533	276	487	692	42.1	150.7	29.8
Russia	62	28	49	56	14.3	100.0	-9.7	635	663	826	856	3.6	29.1	34.8
Other Europe	101	43	52	88	69.2	104.7	-12.9	748	660	835	803	-3.8	21.7	7.4
Total	15,223	13,581	14,976	16,708	11.6	23.0	9.8	148,661	136,276	129,271	160,657	24.3	17.9	8.1

TABLE 2

TOTAL STOPOVER ARRIVALS BY PERMANENT RESIDENCE

	SEPTEMBER							JANUARY - SEPTEMBER						
	2000	2001	2002	2003	% Change			2000	2001	2002	2003	% Change		
					2003/02	2003/01	2003/00					2003/02	2003/01	2003/00
LATIN AMERICA														
CENTRAL AMERICA														
Mexico	157	169	169	173	2.4	2.4	10.2	1,743	2,029	1,488	1,417	-4.8	-30.2	-18.7
Belize	34	43	49	59	20.4	37.2	73.5	415	382	428	819	91.4	114.4	97.3
Costa Rica	43	61	42	64	52.4	4.9	48.8	439	469	498	434	-12.9	-7.5	-1.1
El Salvador	8	6	7	7	0.0	16.7	-12.5	168	162	154	96	-37.7	-40.7	-42.9
Guatemala	26	35	44	61	38.6	74.3	134.6	221	264	327	275	-15.9	4.2	24.4
Honduras	15	10	15	18	20.0	80.0	20.0	226	123	127	132	3.9	7.3	-41.6
Nicaragua	5	12	1	9	800.0	-25.0	80.0	38	40	58	33	-43.1	-17.5	-13.2
Panama	125	47	92	65	-29.3	38.3	-48.0	1,020	978	791	742	-6.2	-24.1	-27.3
Total	413	383	419	456	8.8	19.1	10.4	4,270	4,447	3,871	3,948	2.0	-11.2	-7.5
SOUTH AMERICA														
Argentina	86	50	23	41	78.3	-18.0	-52.3	884	1,054	345	499	44.6	-52.7	-43.6
Bolivia	4	6	1	11	1000.0	83.3	175.0	45	55	40	55	37.5	0.0	22.2
Brazil	89	51	43	47	9.3	-7.8	-47.2	866	703	675	554	-17.9	-21.2	-36.0
Chile	50	60	38	52	36.8	-13.3	4.0	627	553	527	318	-39.7	-42.5	-49.3
Colombia	133	121	21	25	19.0	-79.3	-81.2	1,350	1,352	715	521	-27.1	-61.5	-61.4
Ecuador	43	18	3	7	133.3	-61.1	-83.7	168	254	121	61	-49.6	-76.0	-63.7
Guyana	191	96	141	123	-12.8	28.1	-35.6	1,473	1,184	1,378	1,294	-6.1	9.3	-12.2
Paraguay	1	0	0	0	-	-	-100.0	20	20	18	40	122.2	100.0	100.0
Peru	21	25	28	29	3.6	16.0	38.1	260	301	278	258	-7.2	-14.3	-0.8
Surinam	22	8	11	19	72.7	137.5	-13.6	201	201	138	220	59.4	9.5	9.5
Uruguay	9	6	5	3	-40.0	-50.0	-66.7	74	117	63	37	-41.3	-68.4	-50.0
Venezuela	91	59	93	93	0.0	57.6	2.2	854	948	977	574	-41.2	-39.5	-32.8
Other South America	0	1	0	4	-	-	-	8	5	11	10	-9.1	100.0	25.0
Total	740	501	407	454	11.5	-9.4	-38.6	6,830	6,747	5,286	4,441	-16.0	-34.2	-35.0
Total Latin America	1,153	884	826	910	10.2	2.9	-21.1	11,100	11,194	9,157	8,389	-8.4	-25.1	-24.4

TABLE 2

TOTAL STOPOVER ARRIVALS BY PERMANENT RESIDENCE

	SEPTEMBER							JANUARY - SEPTEMBER						
	2000	2001	2002	2003	% Change			2000	2001	2002	2003	% Change		
					2003/02	2003/01	2003/00					2003/02	2003/01	2003/00
CARIBBEAN														
Antigua	133	98	169	125	-26.0	27.6	-6.0	1,374	1,099	1,343	1,415	5.4	28.8	3.0
Bahamas	438	427	264	202	-23.5	-52.7	-53.9	5,092	5,145	2,987	2,191	-26.6	-57.4	-57.0
Barbados	317	271	334	409	22.5	50.9	29.0	3,815	3,269	3,624	4,104	13.2	25.5	7.6
Bermuda	83	69	80	83	3.8	20.3	0.0	1,372	1,257	1,345	1,708	27.0	35.9	24.5
British Virgin Is.	34	59	37	38	2.7	-35.6	11.8	353	410	355	444	25.1	8.3	25.8
Cayman Is.	789	732	809	750	-7.3	2.5	-4.9	8,376	8,631	8,217	8,621	4.9	-0.1	2.9
Dominica	78	36	43	44	2.3	22.2	-43.6	414	328	295	310	5.1	-5.5	-25.1
Grenada	59	39	61	46	-24.6	17.9	-22.0	607	420	470	515	9.6	22.6	-15.2
Monsterrat	5	6	7	9	28.6	50.0	80.0	94	87	66	96	45.5	10.3	2.1
St. Kitts/Nevis/Anguilla	60	72	80	65	-18.8	-9.7	8.3	672	529	578	608	5.2	14.9	-9.5
St. Lucia	192	188	207	178	-14.0	-5.3	-7.3	1,394	1,174	1,301	1,468	12.8	25.0	5.3
St. Vincent	86	51	77	53	-31.2	3.9	-38.4	550	441	538	524	-2.6	18.8	-4.7
Turks & Caicos Is.	66	78	83	48	-42.2	-38.5	-27.3	443	741	744	753	1.2	1.6	70.0
Trinidad & Tobago	506	481	446	603	35.2	25.4	19.2	4,854	4,898	5,134	5,592	8.9	14.2	15.2
Comm. Caribbean	2,846	2,607	2,697	2,653	-1.6	1.8	-6.8	29,410	28,429	26,997	28,349	5.0	-0.3	-3.6
Aruba	12	7	35	31	-11.4	342.9	158.3	256	205	311	390	25.4	90.2	52.3
Bonaire	0	0	0	2	-	-	-	0	0	0	30	-	-	-
Cuba	100	55	94	69	-26.6	25.5	-31.0	1,067	537	504	526	4.4	-2.0	-50.7
Curacao	39	47	48	56	16.7	19.1	43.6	416	533	724	1,051	45.2	97.2	152.6
Dominican Republic	75	70	105	71	-32.4	1.4	-5.3	640	730	752	643	-14.5	-11.9	0.5
Guadelope	6	3	2	6	200.0	100.0	0.0	54	48	60	67	11.7	39.6	24.1
Haiti	41	31	87	58	-33.3	87.1	41.5	403	405	644	587	-8.9	44.9	45.7
St. Maarten	49	43	50	65	30.0	51.2	32.7	378	397	405	546	34.8	37.5	44.4
All other Caribbean	30	22	34	29	-14.7	31.8	-3.3	396	390	397	381	-4.0	-2.3	-3.8
Other Caribbean	352	278	455	387	-14.9	39.2	9.9	3,610	3,245	3,797	4,221	11.2	30.1	16.9
TOTAL CARIBBEAN	3,198	2,885	3,152	3,040	-3.6	5.4	-4.9	33,020	31,674	30,794	32,570	5.8	2.8	-1.4
OTHER COUNTRIES														
African Countries	131	54	99	73	-26.3	35.2	-44.3	1,028	981	931	815	-12.5	-16.9	-20.7
Isreal	102	129	94	56	-40.4	-56.6	-45.1	747	865	554	596	7.6	-31.1	-20.2
Saudi Arabia	1	4	0	1	ERR	-75.0	0.0	35	34	43	33	-23.3	-2.9	-5.7
Turkey	6	5	6	7	16.7	40.0	16.7	241	170	84	99	17.9	-41.8	-58.9
Other Middle East	63	29	14	40	185.7	37.9	-36.5	256	241	278	272	-2.2	12.9	6.3
India & Pakistan	58	58	41	40	-2.4	-31.0	-31.0	526	606	403	444	10.2	-26.7	-15.6
Japan	609	304	414	323	-22.0	6.3	-47.0	5,592	4,587	3,346	2,846	-14.9	-38.0	-49.1
China	25	25	29	35	20.7	40.0	40.0	420	369	362	406	12.2	10.0	-3.3
Taiwan	2	12	2	6	200.0	-50.0	200.0	66	64	52	62	19.2	-3.1	-6.1
Korea	6	10	11	13	18.2	30.0	116.7	150	195	176	134	-23.9	-31.3	-10.7
Philippines	27	22	50	38	-24.0	72.7	40.7	415	350	573	884	54.3	152.6	113.0
Singapore	6	11	5	4	-20.0	-63.6	-33.3	36	113	73	81	11.0	-28.3	125.0
Other Asia	23	17	8	18	125.0	5.9	-21.7	231	267	182	211	15.9	-21.0	-8.7
Australia	133	94	108	122	13.0	29.8	-8.3	1,135	1,023	1,118	1,730	54.7	69.1	52.4
New Zealand	18	8	29	17	-41.4	112.5	-5.6	170	205	246	395	60.6	92.7	132.4
All Other Ctries	9	1	7	3	-57.1	200.0	-66.7	67	45	64	41	-35.9	-8.9	-38.8
Total	1,219	783	917	796	-13.2	1.7	-34.7	11,115	10,115	8,485	9,049	6.6	-10.5	-18.6
GRAND TOTAL	79,422	63,508	75,918	76,535	0.8	20.5	-3.6	1,020,539	1,017,360	966,319	1,027,108	6.3	1.0	0.6

STOPOVER VISITORS BY MARKET SHARE

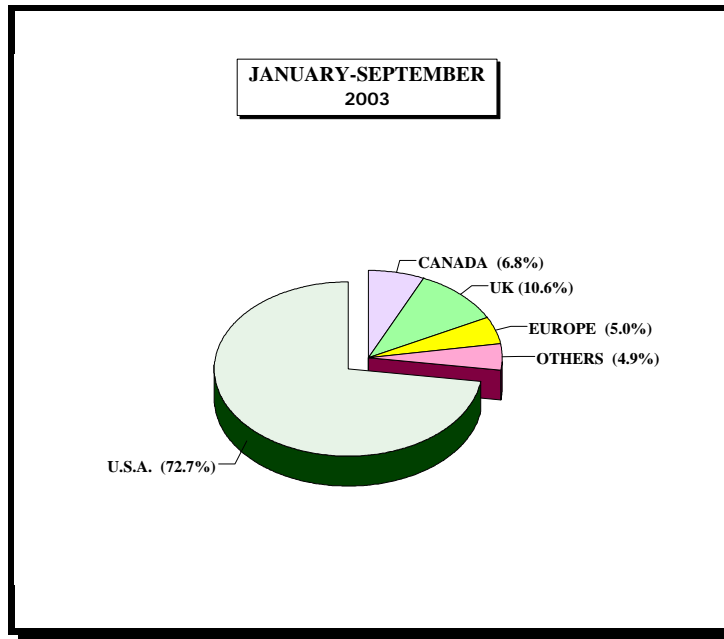


Fig. 2

Country	September 2003	% Share	Jan. - Sep. 2003	% Share	Jan. - Sep. 2002	% Share	%Change 2003/02
U.S.A	51,019	66.7%	747,032	72.7%	715,433	74.0%	4.4%
CANADA	4,062	5.3%	69,411	6.8%	73,179	7.6%	-5.1%
U.K.	11,911	15.6%	109,134	10.6%	90,827	9.4%	20.2%
EUROPE	4,797	6.3%	51,523	5.0%	38,444	4.0%	34.0%
OTHERS	4,745	6.2%	50,007	4.9%	48,436	5.0%	3.2%
Total	76,534	100.0%	1,027,107	100.0%	966,319	100.0%	6.3%

TABLE 3

<u>AVERAGE LENGTH OF STAY (Nights)</u>					
<u>FOREIGN NATIONALS</u>					
	All Types of Accommodation			Hotel	
	2002	2003		2002	2003
January	10.4	10.1		6.7	6.6
February	9.0	8.8		6.5	6.3
March	8.4	8.5		6.2	6.1
April	9.3	8.9		6.2	6.2
May	9.2	9.2		5.8	5.9
June	10.6	10.5		6.1	6.2
July	11.6	11.5		6.6	6.7
August	10.4	10.4		6.5	6.7
September	11.0	10.5		6.4	6.5
Jan. - Sep.	10.0	9.8		6.3	6.3

Note: LENGTH OF STAY IS BASED ON INTENDED LENGTH OF STAY

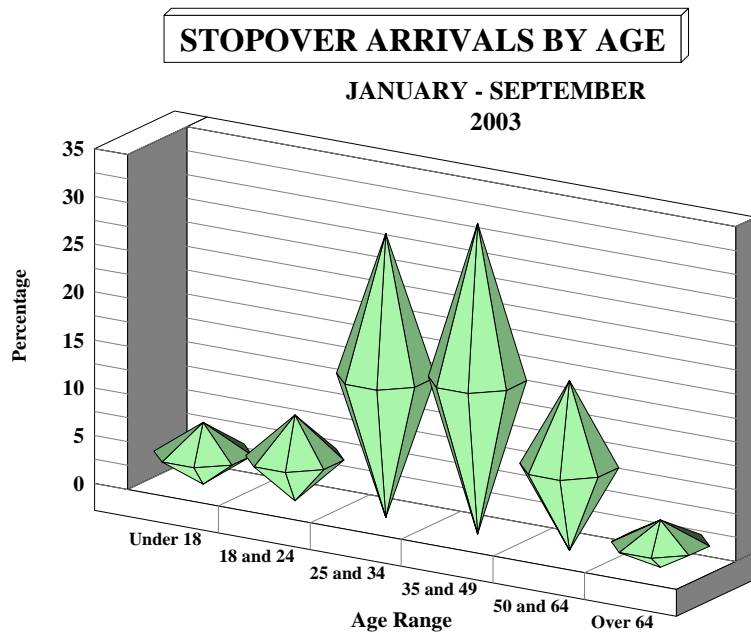


Fig. 3

AGE DISTRIBUTION OF STOPOVER ARRIVALS

Age	SEPTEMBER		JAN.- SEP.		JAN.- AUG.		%Change 2003/02
	2003	% Share	2003	% Share	2002	% Share	
Under 18	4,879	6.4	131,022	12.8	121,096	12.5	8.2%
18 and 24	6,837	8.9	99,712	9.7	94,529	9.8	5.5%
25 and 34	22,684	29.6	242,498	23.6	236,891	24.5	2.4%
35 and 49	24,837	32.5	332,016	32.3	311,983	32.3	6.4%
50 and 64	13,561	17.7	175,488	17.1	158,613	16.4	10.6%
Over 64	3,736	4.9	46,371	4.5	43,207	4.5	7.3%
Total	76,534	100.0	1,027,107	100.0	966,319	100.0	6.3%

TABLE 4

**CRUISE PASSENGER ARRIVALS BY MONTH AND PORT OF CALL
JANUARY - SEPTEMBER 2003**

	MONTEGO BAY		% Change 2003/02		OCHO RIOS		% Change 2003/02		2003 TOTAL		2002 TOTAL		% Change 2003/02	
	CALLS	PAX	CALLS	PAX	CALLS	PAX	CALLS	PAX	CALLS	PAX	CALLS	PAX	CALLS	PAX
January	25	43,827	56.3%	74.4%	35	75,007	16.7%	13.2%	60	118,834	46	91,399	30.4%	30.0%
February	24	39,006	71.4%	121.0%	35	77,390	20.7%	30.8%	60	116,451	43	76,799	39.5%	51.6%
March	27	38,558	92.9%	100.8%	41	89,932	57.7%	49.2%	69	128,758	41	79,547	68.3%	61.9%
April	19	33,601	216.7%	335.1%	30	74,408	-6.3%	9.9%	49	108,009	38	75,442	28.9%	43.2%
Jan. - Apr.	95	154,992	90.0%	122.3%	141	316,737	20.5%	25.0%	238	472,052	168	323,187	41.7%	46.1%
May	7	16,907	40.0%	52.0%	18	47,443	5.9%	9.5%	25	64,350	22	54,453	13.6%	18.2%
June	6	14,214	50.0%	43.2%	17	50,403	6.3%	14.0%	24	64,812	20	54,125	20.0%	19.7%
July	5	17,608	0.0%	39.2%	22	66,546	22.2%	28.3%	27	84,154	23	64,512	17.4%	30.4%
August	5	14,485	25.0%	48.5%	16	48,636	-5.9%	0.9%	21	63,121	21	57,938	0.0%	8.9%
September	4	12,566	0.0%	44.6%	21	55,492	23.5%	27.6%	25	68,058	21	52,177	19.0%	30.4%
May - Sep.	27	75,780	22.7%	45.3%	94	268,520	10.6%	16.2%	122	344,495	107	283,205	14.0%	21.6%
Jan. - Sep.	122	230,772	69.4%	89.4%	235	585,257	16.3%	20.8%	360	816,547	275	606,392	30.9%	34.7%

- * Note:
1. During the month of January three Cruise Ship calls with 3,174 Cruise passengers visited two ports.
 2. During the month of February 2 Cruise Ship calls with 2,798 Cruise passengers visited two ports.
 3. Included in the total Cruise passengers for the month of February, 1 call with 55 passengers visited Port Antoinio.
 4. During the month of March 3 Cruise Ship calls with 2,679 Cruise passengers visited two ports.
 5. Included in the total Cruise passengers for the month of March, 1 call with 268 passengers visited Kingston.
 6. Included in the total Cruise passengers for the month of June, 1 call with 195 passengers visited Port Antonio.
 7. During the month of June 1 Cruise Ship call with 3,494 Cruise passengers visited two ports.

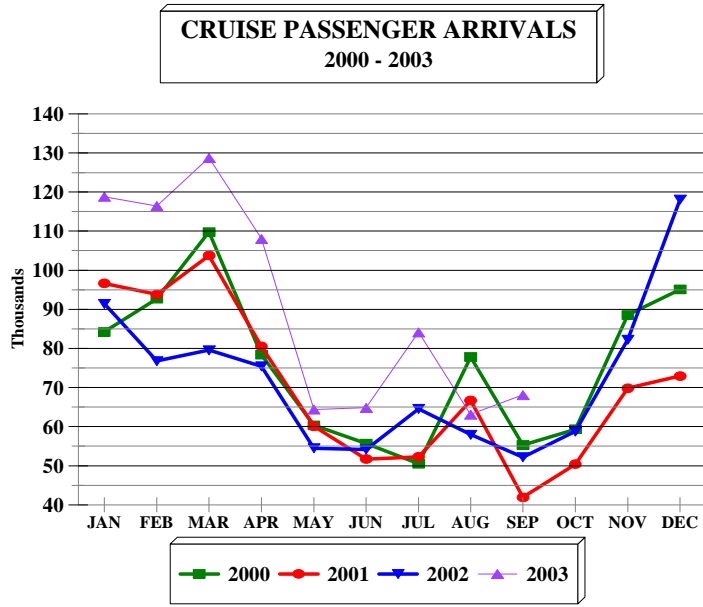


FIG. 4

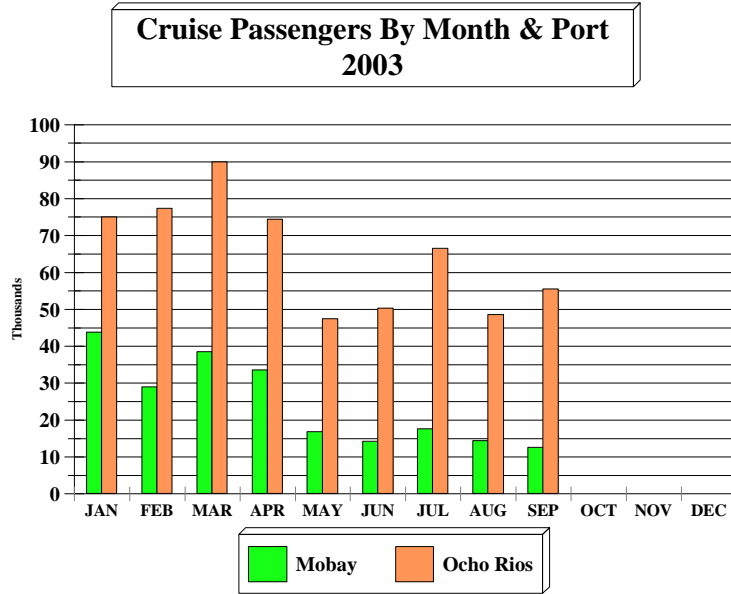


FIG. 4a

TABLE 5A
LANDED TOURISTS BY SCHEDULED & CHARTERED AIRLINES

	<u>SEPTEMBER 2003</u>			<u>JANUARY - SEPTEMBER 2003</u>		
	<u>SCHEDULED AIRLINES</u>	<u>CHARTERED AIRLINES</u>	<u>TOTAL STOPOVERS</u>	<u>SCHEDULED AIRLINES</u>	<u>CHARTERED AIRLINES</u>	<u>TOTAL STOPOVERS</u>
U.S.A.						
<u>NORTHEAST (NEW YORK)</u>						
Connecticut	1,193	1	1,194	18,050	274	18,324
Delaware	238	0	238	3,679	15	3,694
Maine	100	0	100	1,864	20	1,884
Maryland	2,026	1	2,027	29,326	211	29,537
Massachusetts	1,126	0	1,126	21,987	450	22,437
New Hampshire	190	0	190	3,213	79	3,292
New Jersey	2,827	0	2,827	46,404	363	46,767
New York	8,102	16	8,118	126,443	1,709	128,152
Pennsylvania	2,751	0	2,751	42,231	486	42,717
Rhode Island	164	0	164	2,591	57	2,648
Vermont	43	0	43	1,110	21	1,131
Virginia	1,158	0	1,158	16,365	416	16,781
Washington D.C.	258	0	258	4,254	35	4,289
West Virginia	99	0	99	1,220	47	1,267
Total	20,275	18	20,293	318,737	4,183	322,920
<u>MIDWEST (CHICAGO)</u>						
Illinois	1,597	821	2,418	24,072	15,923	39,995
Indiana	632	69	701	8,168	2,563	10,731
Iowa	279	44	323	4,425	1,609	6,034
Kansas	307	9	316	3,075	377	3,452
Kentucky	385	4	389	3,741	1,098	4,839
Michigan	1,041	31	1,072	15,460	6,862	22,322
Minnesota	501	2	503	9,904	6,002	15,906
Missouri	599	794	1,393	5,479	11,653	17,132
Nebraska	352	3	355	3,409	122	3,531
North Dakota	61	0	61	704	199	903
Ohio	1,217	3	1,220	13,534	2,114	15,648
South Dakota	61	0	61	996	325	1,321
Wisconsin	493	217	710	8,194	11,886	20,080
	7,525	1,997	9,522	101,161	60,733	161,894

TABLE 5A
LANDED TOURISTS BY SCHEDULED & CHARTERED AIRLINES

SEPTEMBER 2003

JANUARY - SEPTEMBER 2003

	SCHEDULED AIRLINES	CHARTERED AIRLINES	TOTAL STOPOVERS	SCHEDULED AIRLINES	CHARTERED AIRLINES	TOTAL STOPOVERS
<u>SOUTH (MIAMI)</u>						
Alabama	460	1	461	5,707	309	6,016
Arkansas	168	4	172	2,073	315	2,388
Florida	8,287	0	8,287	91,958	206	92,164
Georgia	2,753	0	2,753	32,412	1,169	33,581
Louisiana	336	0	336	3,833	1,756	5,589
Mississippi	194	0	194	2,047	338	2,385
North Carolina	1,141	1	1,142	13,535	612	14,147
Oklahoma	228	1	229	2,135	1,426	3,561
Puerto Rico	129	0	129	1,010	1	1,011
South Carolina	490	0	490	6,027	300	6,327
Tennessee	744	2	746	9,231	690	9,921
Texas	1,944	6	1,950	23,313	8,107	31,420
	<u>16,874</u>	<u>15</u>	<u>16,889</u>	<u>193,281</u>	<u>15,229</u>	<u>208,510</u>

WEST (LOS ANGELES)

Alaska	20	0	20	278	4	282
Arizona	270	0	270	3,436	57	3,493
California	2,793	2	2,795	33,858	259	34,117
Colorado	347	0	347	4,917	162	5,079
Hawaii	16	0	16	176	9	185
Idaho	53	0	53	830	7	837
Montana	27	0	27	600	5	605
Nevada	179	0	179	1,902	26	1,928
New Mexico	66	0	66	701	32	733
Oregon	131	0	131	1,630	23	1,653
Utah	139	2	141	1,227	32	1,259
Washington	253	0	253	3,174	50	3,224
Wyoming	17	0	17	304	9	313
	<u>4,311</u>	<u>4</u>	<u>4,315</u>	<u>53,033</u>	<u>675</u>	<u>53,708</u>
TOTAL U.S.A.	<u>48,985</u>	<u>2,034</u>	<u>51,019</u>	<u>666,212</u>	<u>80,820</u>	<u>747,032</u>

TABLE 5A
LANDED TOURISTS BY SCHEDULED & CHARTERED AIRLINES

	<u>SEPTEMBER 2003</u>			<u>JANUARY - SEPTEMBER 2003</u>		
	SCHEDULED AIRLINES	CHARTERED AIRLINES	TOTAL STOPOVERS	SCHEDULED AIRLINES	CHARTERED AIRLINES	TOTAL STOPOVERS
<u>CANADA (TORONTO)</u>						
Alberta	136	2	138	2,694	153	2,847
British Columbia	140	1	141	1,982	71	2,053
Manitoba	39	4	43	1,318	848	2,166
New Brunswick	16	0	16	660	21	681
Newfoundland	43	0	43	415	22	437
Nova Scotia	39	2	41	1,218	33	1,251
Ontario	2,204	1,096	3,300	32,968	18,320	51,288
P.E. Island	3	2	5	132	5	137
Quebec	305	10	315	5,543	1,958	7,501
Saskatchewan	10	0	10	703	181	884
Other Canada	10	0	10	136	30	166
	<u>2,945</u>	<u>1,117</u>	<u>4,062</u>	<u>47,769</u>	<u>21,642</u>	<u>69,411</u>
<u>LONDON OFFICE</u>						
<u>Northern Europe</u>						
U.K.	7,565	4,346	11,911	74,113	35,021	109,134
Denmark	37	0	37	300	2	302
Finland	19	0	19	329	4	333
Norway	33	0	33	610	6	616
Sweden	67	0	67	676	14	690
<u>Southern Europe</u>						
Greece	16	0	16	207	10	217
Italy	555	637	1,192	9,000	9,938	18,938
Portugal	16	26	42	295	85	380
Spain	128	1,074	1,202	1,264	4,741	6,005
<u>Western Europe</u>						
Austria	86	0	86	1,436	6	1,442
Belgium	275	2	277	1,808	8	1,816
France	157	3	160	1,984	32	2,016
Germany	949	2	951	11,280	62	11,342
Luxemburg	10	0	10	99	0	99
Netherlands	309	2	311	2,997	11	3,008
Switzerland	143	1	144	1,559	42	1,601
<u>Central/East Europe</u>						
Czechoslovakia	25	1	26	240	4	244
Hungary	8	0	8	120	3	123
Poland	69	3	72	674	18	692
Russia	54	2	56	849	7	856
Other Europe	86	2	88	780	23	803
	<u>10,607</u>	<u>6,101</u>	<u>16,708</u>	<u>110,620</u>	<u>50,037</u>	<u>160,657</u>

TABLE 5A
LANDED TOURISTS BY SCHEDULED & CHARTERED AIRLINES

	<u>SEPTEMBER 2003</u>			<u>JANUARY - SEPTEMBER 2003</u>		
	SCHEDULED AIRLINES	CHARTERED AIRLINES	TOTAL STOPOVERS	SCHEDULED AIRLINES	CHARTERED AIRLINES	TOTAL STOPOVERS
<u>OTHER COUNTRIES</u>						
<u>CENTRAL AMERICA</u>						
Mexico	172	1	173	1,404	13	1,417
Belize	59	0	59	819	0	819
Costa Rica	64	0	64	434	0	434
El Salvador	7	0	7	96	0	96
Guatemala	61	0	61	274	1	275
Honduras	18	0	18	132	0	132
Nicaragua	9	0	9	33	0	33
Panama	65	0	65	742	0	742
	455	1	456	3,934	14	3,948
<u>SOUTH AMERICA</u>						
Argentina	41	0	41	499	0	499
Bolivia	11	0	11	55	0	55
Brazil	45	2	47	551	3	554
Chile	52	0	52	318	0	318
Colombia	25	0	25	263	258	521
Ecuador	7	0	7	61	0	61
Guyana	123	0	123	1,293	1	1,294
Paraguay	0	0	0	40	0	40
Peru	29	0	29	257	1	258
Surinam	19	0	19	220	0	220
Uruguay	3	0	3	37	0	37
Venezuela	93	0	93	571	3	574
Other South America	4	0	4	10	0	10
	452	2	454	4,175	266	4,441
Total Latin America	907	3	910	8,109	280	8,389

TABLE 5A
LANDED TOURISTS BY SCHEDULED & CHARTERED AIRLINES

SEPTEMBER 2003

JANUARY - SEPTEMBER 2003

	SCHEDULED AIRLINES	CHARTERED AIRLINES	TOTAL STOPOVERS	SCHEDULED AIRLINES	CHARTERED AIRLINES	TOTAL STOPOVERS
<u>CARIBBEAN</u>						
Antigua	125	0	125	1,412	3	1,415
Bahamas	202	0	202	2,185	6	2,191
Barbados	409	0	409	4,103	1	4,104
Bermuda	82	1	83	1,549	159	1,708
British Virgin Is.	38	0	38	444	0	444
Cayman Is.	750	0	750	8,620	1	8,621
Dominica	44	0	44	312	0	312
Grenada	46	0	46	514	1	515
Monsterrat	9	0	9	95	1	96
St. Kitts/Nevis/Anguilla	65	0	65	607	1	608
St. Lucia	178	0	178	1,468	0	1,468
St. Vincent	53	0	53	523	1	524
Turks & Caicos Is.	48	0	48	753	0	753
Trinidad & Tobago	603	0	603	5,591	1	5,592
Comm. Caribbean	2,652	1	2,653	28,176	175	28,351
Aruba	31	0	31	390	0	390
Bonaire	2	0	2	30	0	30
Cuba	69	0	69	526	0	526
Curacao	56	0	56	1,051	0	1,051
Dominican Republic	70	1	71	634	7	641
Guadelope	6	0	6	52	15	67
Haiti	58	0	58	586	1	587
St. Maarten	65	0	65	545	1	546
All other Caribbean	29	0	29	381	0	381
Other Caribbean	386	1	387	4,195	24	4,219
TOTAL CARIBBEAN	3,038	2	3,040	32,371	199	32,570
<u>OTHER COUNTRIES</u>						
African Countries	72	1	73	791	24	815
Isreal	56	0	56	587	9	596
Saudi Arabia	1	0	1	33	0	33
Turkey	7	0	7	89	10	99
Other Middle East	40	0	40	271	2	273
India & Pakistan	40	0	40	434	9	443
Japan	323	0	323	2,830	16	2,846
China	34	1	35	368	38	406
Taiwan	6	0	6	61	1	62
Korea	13	0	13	131	3	134
Philippines	38	0	38	883	1	884
Singapore	4	0	4	78	3	81
Other Asia	18	0	18	209	2	211
Australia	121	1	122	1,720	10	1,730
New Zealand	17	0	17	393	2	395
All Other Ctries	3	0	3	41	0	41
	793	3	796	8,919	130	9,049
GRAND TOTAL	67,275	9,260	76,535	874,000	153,108	1,027,108

Stopover Arrivals
By Intended Resort Area of Stay

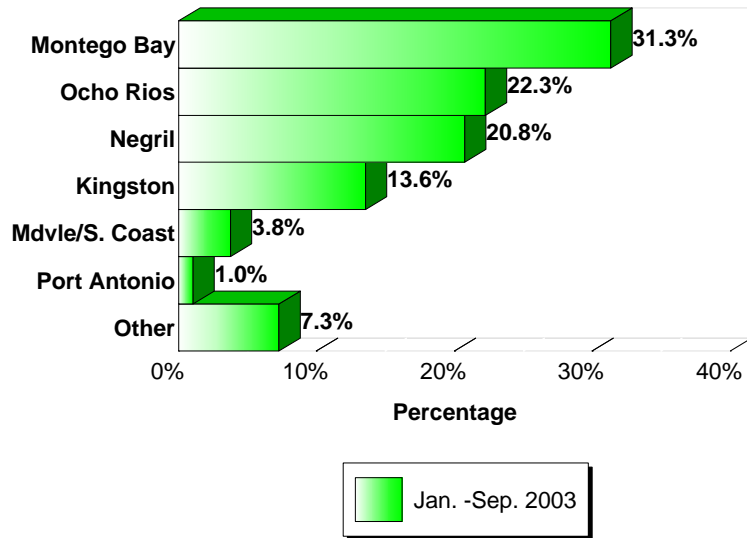


Fig. 5

STOPOVER ARRIVALS BY INTENDED AREA OF STAY

Area	SEPTEMBER		JAN.-SEP.		JAN.-SEP.		%Change 2003/02
	2003	%Share	2003	%Share	2002	%Share	
Montego Bay	22,275	29.1%	321,936	31.3%	301,429	31.2%	6.8%
Ocho Rios	16,761	21.9%	228,559	22.3%	215,212	22.3%	6.2%
Negril	16,142	21.1%	213,267	20.8%	199,260	20.6%	7.0%
Kingston	11,697	15.3%	139,435	13.6%	135,167	14.0%	3.2%
Mdvle/S. Coast	2,751	3.6%	38,542	3.8%	36,961	3.8%	4.3%
Port Antonio	766	1.0%	10,697	1.0%	10,121	1.0%	5.7%
Other	6,142	8.0%	74,671	7.3%	68,169	7.1%	9.5%
Total	76,534	100.0%	1,027,107	100.0%	966,319	100.0%	6.3%