

MONTHLY STATISTICAL REPORT

Volume X111, Issue V
May 2003

TOURIST (Stopovers)

Stopover arrivals in May 2003 were **102,021**, an increase of **3%** over the **99,314** recorded for May 2002. Cumulatively, stopovers for the January to May period increased by **7%**. There was a total of **556,244** stopovers for the period compared to **520,310** in 2002.

United States

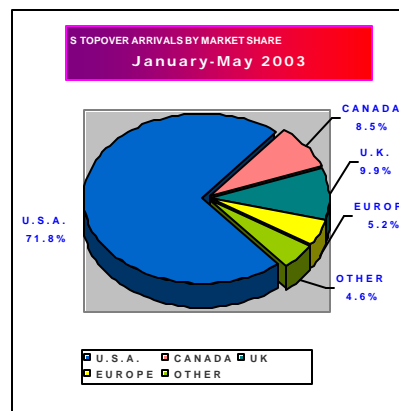
Stopover arrivals from the United States market increased by approximately **1%** in May with a total of **75,012** visitors compared to the **74,655** visitors who came in May 2002. While the Midwest increased by **12%**, the other three main marketing regions recorded declines. The Northeast declined by **2%**, the South by **1%**, and the West by **5%**.

For the January to May period the US market increased by **5%**. Total visitors from this market for the period was **399,298** compared to **381,498** for the corresponding period in 2002. The Northeast increased by **6%**, and the Midwest by **10%**. The Southern and the Western regions declined by under **1%** and **2%** respectively.

Canada

In May, the Canadian market declined by **10%** with a total of **5,276** stopovers compared to **5,871** stopovers who came in May 2002. The leading province Ontario declined by **10%**, and the second most important visitor-producing province Quebec also declined by **26%**. The provinces of Saskatchewan, Alberta and British Columbia recorded increases though from relatively

small bases. The other two leading provinces Nova Scotia and Manitoba recorded declines. Cumulatively, the Canadian market declined by **2%** in the January to May period with a total of **47,087** stopovers compared to **48,134** in 2002.



Europe

The European market continued to show remarkable improvement when it recorded a **27%** increase in May 2003. The market provided a total of **16,282** stopover visitors compared to the **12,861** recorded in May 2002 and was also up against the **13,246** stopovers who came in May 2001. The United Kingdom and Germany increased by **41%** and **1%** respectively. All the main European country markets recorded increases despite from relatively small bases.

Cumulatively, for the January to May period, the European market increased by **26%**. Total stopovers for the period was **83,991** compared to **66,465** in 2002. Both the United King-

dom and Germany recorded increases. The United Kingdom with a total of **55,037** stopovers recorded an increase of **19%** while Germany with **7,165** visitors recorded an increase of **21%**.

Latin America

The Latin American market declined by **21%** in May with a total of **968** stopovers compared to **1,217** in May 2002. While Mexico, Brazil and Argentina increased by **5%**, **20%** and **209%** respectively, the other two leading countries recorded declines. Chile (**17%**), and Colombia (**37%**).

For the January to May period, the Latin American market declined by under **1%** with a total of **4,765** visitors compared to **4,781** for the corresponding period in 2002.

While cruise passenger arrivals to Montego Bay in the 5-month period doubled with a 113% increase, arrivals to Ocho Rios scored a healthy 19% in that period.

The Caribbean

Visitors to Jamaica from the Caribbean region declined by **14%** in May. A total of **3,232** visitors from other Caribbean countries visited Jamaica, down from **3,746** in May 2002. Arrivals were up by **14%** against May 2000.

The major Caribbean countries which provided visitors to Jamaica in May were: the Cayman Islands (**1,146**), Trinidad and Tobago (**550**), Barbados (**336**), the Bahamas (**232**), Antigua (**136**), Bermuda (**111**), and St. Lucia (**90**). Except for the Cayman Islands which increased in May, all the other major Caribbean countries recorded declines against May 2002.

Cumulatively, the Caribbean stopover arrivals to Jamaica in the January to May period increased by **8%** moving from **14,959** in 2002 to **16,168** in 2003. In the period under review, the top Caribbean countries that provided stopover visitors to Jamaica were the Cayman Islands with **4,735**, Trinidad and Tobago with **2,817**, Barbados with **1,949** and the Bahamas with **1,055**.

Japan

The Japanese market declined by **28%** in May with a total of **250** stopovers compared to **345** in May 2002 but was down by **47%** against the **475** for the corresponding period in 2001.

For the January to May period, Japan declined by **16%** with **1,607** visitors compared to **1,914** in 2002.

Other Countries

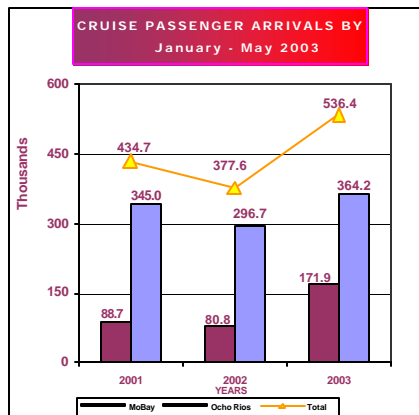
Of the other countries, Australia with a total of **1,120** stopovers in January to May period recorded an increase of **98%** against the **566** who came in January to May 2002.

Market Share

The market share of stopover visitors for the January to May period were as follows:

USA **71.8%**; Canada **8.5%**; UK **9.9%**; Continental Europe **5.2%** the Caribbean **2.9%**; Latin America **0.9%**; Japan **.3%** and Other Countries **0.5%**.

Cruise Passengers



A total of **64,350** cruise passengers visited Jamaica in May 2003. This represents an **18%** increase against the **54,453** recorded for May 2002. Cumulatively, a total of **536,402** cruise passengers visited Jamaica in the January to May period, a **42%** increase against the **377,640** recorded for the corresponding period in 2002.

A total of **47,443** cruise passengers visited the port of Ocho Rios in May, an increase of **10%** over the

43,327 recorded for May 2002. For the January to May period cruise passenger arrivals to the port of Ocho Rios was **364,180** an increase of **23%** against the **296,732** for the corresponding period in 2002.

Montego Bay recorded a total of **16,907** cruise passengers for the month of May 2003, an increase of some **52%** against the **11,126** recorded for May 2002. Cumulatively, for the January to May period, cruise passenger arrivals to Montego Bay was **171,899** an increase of **113%** against the **80,836** recorded for the same period in 2002.

Length of Stay

The average length of stay of stopovers in May was **9.2** nights the same as that for May 2002. The average length of stay in hotels was **5.9** nights against the **5.8** nights in May 2002. Cumulatively, the average length of stay for the January to May period was **9.0** nights compared to **9.2** nights recorded for the similar period in 2002.

First and Repeat Visitors

Approximately **57%** or **54,403** of the **95,809** foreign nationals who visited Jamaica in May were first-time visitors and the other **43%** or **41,406** were repeat guests.

Cumulatively, in the January to May period, some **56%** of the **526,864** Foreign Nationals who visited the island were first-time guests and **44%** were repeat guests.

TABLE 1
TOURIST ARRIVALS
 January - May
2003

Month	<----- Stopovers ----->						Total		
	Foreign Nationals	+/- 2003/02	+/- 2003/01	Non-Resident Jamaicans	+/- 2003/02	+/- 2003/01	Stopover Arrivals	+/- 2003/02	+/- 2003/01
January	95,875	12.6%	-0.9%	5,431	9.0%	5.2%	101,306	12.4%	-0.6%
February	106,440	11.7%	-1.0%	5,018	6.0%	-14.3%	111,458	11.4%	-1.7%
March	124,143	0.4%	-8.9%	5,342	-18.1%	-23.1%	129,485	-0.5%	-9.6%
April	104,597	11.0%	-10.9%	7,377	14.6%	-10.3%	111,974	11.2%	-10.9%
Jan.-Apr.	431,055	8.2%	-5.9%	23,168	2.2%	-11.5%	454,223	7.9%	-6.2%
May	95,809	3.4%	-2.3%	6,212	-7.1%	-7.7%	102,021	2.7%	-2.6%
Jan.-May	526,864	7.3%	-5.2%	29,380	0.1%	-10.7%	556,244	6.9%	-5.6%

STOPOVER ARRIVALS FOREIGN NATIONALS

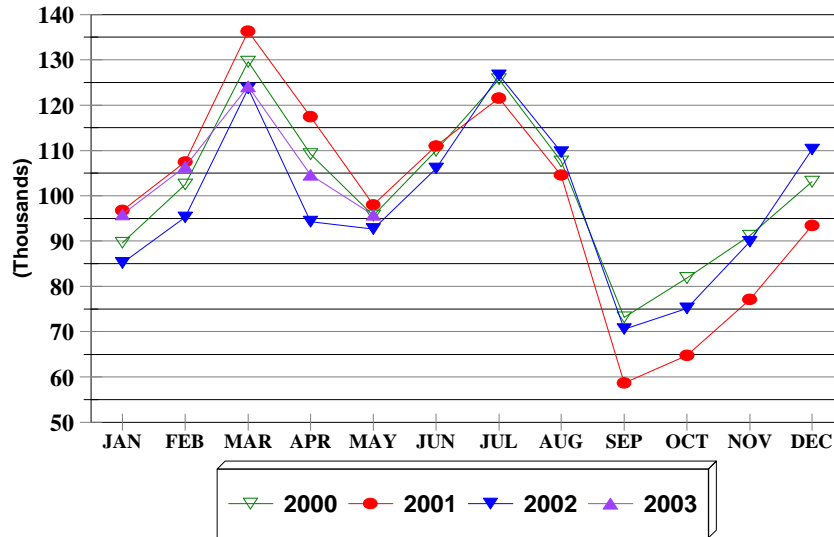


FIG. 1

STOPOVER ARRIVALS NON-RESIDENT JAMAICANS

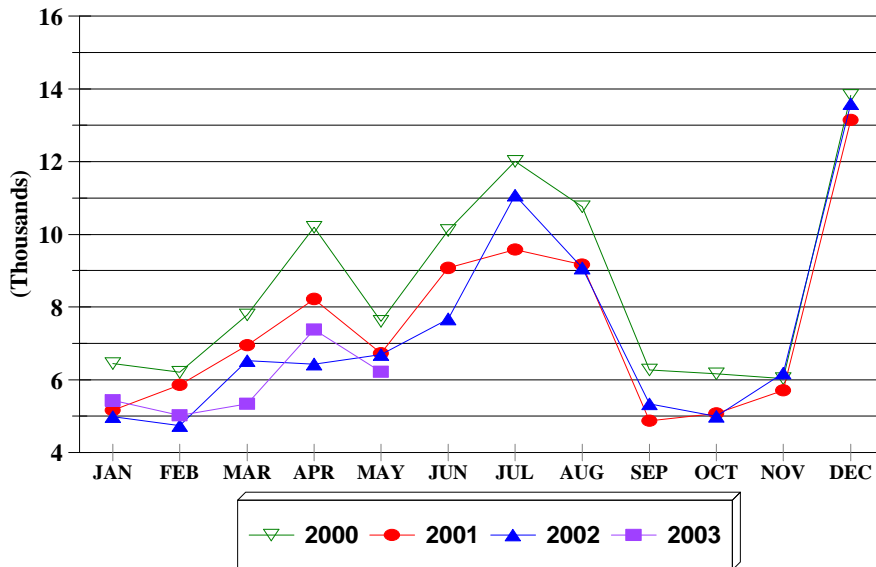


FIG. 1a

TABLE 1.1

First & Repeat Visit to Jamaica

FOREIGN NATIONALS

2003

	Arrivals				TOTAL	% SHARE	
	First Visit	+/-	Repeat Visit	+/-		First Visit	Repeat Visit
Jan.	51,389	18.9	44,486	6.2	95,875	53.6	46.4
Feb.	56,644	12.2	49,796	11.1	106,440	53.2	46.8
Mar.	74,063	2.2	50,080	-2.3	124,143	59.7	40.3
Apr.	57,325	17.3	47,272	4.1	104,597	54.8	45.2
Jan.-Apr.	239,421	11.4	191,634	4.5	431,055	55.5	44.5
May	54,403	11.0	41,406	-5.0	95,809	56.8	43.2
Jan.-May	293,824	11.3	233,040	2.7	526,864	55.8	44.2

TABLE 1.2

**STOPOVER ARRIVALS BY MARKET REGION
AND MONTH OF ARRIVAL 2003**

	U.S.A.				Canada	U.K. Europe	Latin America	Caribbean	Asia	Other Countries	Total
	Northeast	Mid-West	South	West							
January	28,497	21,351	14,638	4,110	11,589	16,286	1,087	2,821	635	292	101,306
February	35,006	25,007	14,940	4,002	11,506	16,812	777	2,594	578	236	111,458
March	40,262	29,316	21,505	5,449	10,779	17,088	892	3,197	695	302	129,485
April	37,597	17,405	19,687	5,514	7,937	17,523	1,041	4,324	532	414	111,974
Jan.-Apr.	141,362	93,079	70,770	19,075	41,811	67,709	3,797	12,936	2,440	1,244	454,223
May	30,120	14,016	25,523	5,353	5,276	16,282	968	3,232	449	802	102,021
Jan. - May	171,482	107,095	96,293	24,428	47,087	83,991	4,765	16,168	2,889	2,046	556,244
+/- %	5.6%	9.5%	-0.1%	-1.6%	-2.2%	26.4%	-0.3%	8.1%	-1.0%	31.7%	6.9%

TABLE 2

TOTAL STOPOVER ARRIVALS BY PERMANENT RESIDENCE

	MAY			% Change				JANUARY - MAY			% Change			
	2000	2001	2002	2003	2003/02	2003/01	2003/00	2000	2001	2002	2003	2003/02	2003/01	2003/00
U.S.A.														
<u>NORTHEAST (NEW YORK)</u>														
Connecticut	1,470	1,688	1,475	1,465	-0.7	-13.2	-0.3	9,904	11,129	9,574	10,073	5.2	-9.5	1.7
Delaware	498	479	415	405	-2.4	-15.4	-18.7	2,278	2,599	1,952	2,178	11.6	-16.2	-4.4
Maine	133	243	179	160	-10.6	-34.2	20.3	1,436	1,716	1,395	1,342	-3.8	-21.8	-6.5
Maryland	2,722	2,981	2,844	2,874	1.1	-3.6	5.6	12,639	14,416	13,156	13,943	6.0	-3.3	10.3
Massachusetts	1,801	2,618	2,216	1,969	-11.1	-24.8	9.3	14,697	18,035	14,412	14,493	0.6	-19.6	-1.4
New Hampshire	219	314	284	267	-6.0	-15.0	21.9	2,390	3,123	2,375	2,361	-0.6	-24.4	-1.2
New Jersey	4,565	5,112	4,444	4,570	2.8	-10.6	0.1	22,948	25,982	22,801	25,187	10.5	-3.1	9.8
New York	12,176	13,115	11,832	11,606	-1.9	-11.5	-4.7	67,642	72,164	61,745	64,192	4.0	-11.0	-5.1
Pennsylvania	4,390	4,566	4,373	4,191	-4.2	-8.2	-4.5	20,737	23,930	21,769	23,614	8.5	-1.3	13.9
Rhode Island	207	263	205	275	34.1	4.6	32.9	1,571	1,766	1,499	1,716	14.5	-2.8	9.2
Vermont	77	130	68	91	33.8	-30.0	18.2	997	1,193	782	898	14.8	-24.7	-9.9
Virginia	1,800	1,776	1,694	1,717	1.4	-3.3	-4.6	8,722	9,401	8,326	8,743	5.0	-7.0	0.2
Washington D.C.	425	477	472	410	-13.1	-14.0	-3.5	1,998	2,314	1,974	2,044	3.5	-11.7	2.3
West Virginia	123	177	140	120	-14.3	-32.2	-2.4	746	918	703	698	-0.7	-24.0	-6.4
Total	30,606	33,939	30,641	30,120	-1.7	-11.3	-1.6	168,705	188,686	162,463	171,482	5.6	-9.1	1.6
<u>MIDWEST (CHICAGO)</u>														
Illinois	4,533	4,377	3,731	3,606	-3.4	-17.6	-20.5	26,816	25,853	23,169	24,937	7.6	-3.5	-7.0
Indiana	1,297	1,127	926	1,050	13.4	-6.8	-19.0	6,784	6,250	5,929	6,479	9.3	3.7	-4.5
Iowa	396	484	361	416	15.2	-14.0	5.1	3,480	4,137	3,976	4,385	10.3	6.0	26.0
Kansas	365	426	427	292	-31.6	-31.5	-20.0	2,314	2,448	1,727	1,791	3.7	-26.8	-22.6
Kentucky	489	370	536	478	-10.8	29.2	-2.2	2,266	2,478	2,480	2,447	-1.3	-1.3	8.0
Michigan	2,015	1,703	1,365	2,152	57.7	26.4	6.8	16,120	17,678	13,564	15,961	17.7	-9.7	-1.0
Minnesota	701	519	557	833	49.6	60.5	18.8	13,430	13,153	11,524	13,352	15.9	1.5	-0.6
Missouri	1,798	1,715	1,441	1,946	35.0	13.5	8.2	7,693	8,366	7,344	8,777	19.5	4.9	14.1
Nebraska	301	322	429	316	-26.3	-1.9	5.0	1,765	2,345	1,791	2,033	13.5	-13.3	15.2
North Dakota	45	59	50	64	28.0	8.5	42.2	652	670	609	699	14.8	4.3	7.2
Ohio	1,760	1,395	1,436	1,497	4.2	7.3	-14.9	9,965	9,808	9,581	8,683	-9.4	-11.5	-12.9
South Dakota	58	51	65	121	86.2	137.3	108.6	684	757	641	1,064	66.0	40.6	55.6
Wisconsin	1,456	1,204	1,166	1,245	6.8	3.4	-14.5	17,731	17,786	15,440	16,487	6.8	-7.3	-7.0
Total	15,214	13,752	12,490	14,016	12.2	1.9	-7.9	109,700	111,729	97,775	107,095	9.5	-4.1	-2.4

TABLE 2

TOTAL STOPOVER ARRIVALS BY PERMANENT RESIDENCE

	MAY							JANUARY - MAY						
	2000	2001	2002	2003	% Change			2000	2001	2002	2003	% Change		
					2003/02	2003/01	2003/00					2003/02	2003/01	2003/00
<u>SOUTH (MIAMI)</u>														
Alabama	910	738	767	981	27.9	32.9	7.8	2,978	2,926	2,582	3,001	16.2	2.6	0.8
Arkansas	294	268	259	318	22.8	18.7	8.2	1,102	950	981	1,142	16.4	20.2	3.6
Florida	10,656	11,379	10,914	10,939	0.2	-3.9	2.7	45,617	46,380	44,040	43,782	-0.6	-5.6	-4.0
Georgia	3,753	4,128	4,648	4,371	-6.0	5.9	16.5	14,831	16,321	16,585	16,261	-2.0	-0.4	9.6
Louisiana	761	674	802	778	-3.0	15.4	2.2	2,024	2,189	2,216	2,162	-2.4	-1.2	6.8
Mississippi	469	423	379	404	6.6	-4.5	-13.9	1,213	1,131	1,166	1,125	-3.5	-0.5	-7.3
North Carolina	1,701	1,779	1,455	1,646	13.1	-7.5	-3.2	6,907	7,390	6,717	7,180	6.9	-2.8	4.0
Oklahoma	479	488	405	523	29.1	7.2	9.2	1,573	1,441	1,261	1,363	8.1	-5.4	-13.4
Puerto Rico	162	127	167	95	-43.1	-25.2	-41.4	728	645	728	497	-31.7	-22.9	-31.7
South Carolina	730	811	911	875	-4.0	7.9	19.9	2,846	3,398	3,030	3,226	6.5	-5.1	13.4
Tennessee	1,204	1,044	1,171	1,138	-2.8	9.0	-5.5	4,567	4,544	4,776	5,054	5.8	11.2	10.7
Texas	3,866	3,358	3,997	3,455	-13.6	2.9	-10.6	11,962	10,004	12,349	11,500	-6.9	15.0	-3.9
Total	24,985	25,217	25,875	25,523	-1.4	1.2	2.2	96,348	97,319	96,431	96,293	-0.1	-1.1	-0.1
<u>WEST (LOS ANGELES)</u>														
Alaska	31	38	16	24	50.0	-36.8	-22.6	151	171	125	157	25.6	-8.2	4.0
Arizona	469	792	413	484	17.2	-38.9	3.2	1,666	3,068	1,853	1,746	-5.8	-43.1	4.8
California	4,173	3,807	3,403	3,184	-6.4	-16.4	-23.7	14,605	15,817	14,063	13,607	-3.2	-14.0	-6.8
Colorado	811	610	650	571	-12.2	-6.4	-29.6	3,242	3,447	3,294	2,833	-14.0	-17.8	-12.6
Hawaii	19	27	17	15	-11.8	-44.4	-21.1	90	96	68	99	45.6	3.1	10.0
Idaho	91	87	90	80	-11.1	-8.0	-12.1	552	649	465	552	18.7	-14.9	0.0
Montana	26	53	27	35	29.6	-34.0	34.6	266	369	344	476	38.4	29.0	78.9
Nevada	225	183	169	216	27.8	18.0	-4.0	793	783	732	955	30.5	22.0	20.4
New Mexico	105	93	104	83	-20.2	-10.8	-21.0	443	565	419	360	-14.1	-36.3	-18.7
Oregon	229	319	268	190	-29.1	-40.4	-17.0	1,065	1,103	1,011	970	-4.1	-12.1	-8.9
Utah	139	112	115	127	10.4	13.4	-8.6	523	468	544	708	30.1	51.3	35.4
Washington	411	359	344	313	-9.0	-12.8	-23.8	2,019	2,056	1,737	1,774	2.1	-13.7	-12.1
Wyoming	37	44	33	31	-6.1	-29.5	-16.2	185	204	174	191	9.8	-6.4	3.2
Total	6,766	6,524	5,649	5,353	-5.2	-17.9	-20.9	25,600	28,796	24,829	24,428	-1.6	-15.2	-4.6
TOTAL U.S.A.	77,571	79,432	74,655	75,012	0.5	-5.6	-3.3	400,353	426,530	381,498	399,298	4.7	-6.4	-0.3

TABLE 2

TOTAL STOPOVER ARRIVALS BY PERMANENT RESIDENCE

	<u>MAY</u>							<u>JANUARY - MAY</u>						
	<u>2000</u>	<u>2001</u>	<u>2002</u>	<u>2003</u>	<u>% C h a n g e</u>			<u>2000</u>	<u>2001</u>	<u>2002</u>	<u>2003</u>	<u>% C h a n g e</u>		
					2003/02	2003/01	2003/00					2003/02	2003/01	2003/00
<u>CANADA (TORONTO)</u>														
Alberta	331	296	244	248	1.6	-16.2	-25.1	2,279	2,473	1,964	2,098	6.8	-15.2	-7.9
British Columbia	265	207	199	217	9.0	4.8	-18.1	1,652	1,677	1,327	1,369	3.2	-18.4	-17.1
Manitoba	70	94	85	68	-20.0	-27.7	-2.9	1,807	1,948	985	1,993	102.3	2.3	10.3
New Brunswick	94	91	47	29	-38.3	-68.1	-69.1	952	952	653	623	-4.6	-34.6	-34.6
Newfoundland	66	59	60	59	-1.7	0.0	-10.6	322	312	307	310	1.0	-0.6	-3.7
Nova Scotia	137	106	96	94	-2.1	-11.3	-31.4	1,501	1,612	784	1,068	36.2	-33.7	-28.8
Ontario	4,603	5,243	4,569	4,108	-10.1	-21.6	-10.8	37,380	41,317	35,089	32,742	-6.7	-20.8	-12.4
P.E. Island	7	8	8	14	75.0	75.0	100.0	99	101	94	119	26.6	17.8	20.2
Quebec	548	558	517	384	-25.7	-31.2	-29.9	6,056	8,144	6,310	5,861	-7.1	-28.0	-3.2
Saskatchewan	51	50	17	46	170.6	-8.0	-9.8	630	825	461	804	74.4	-2.5	27.6
Other Canada	21	14	29	9	-69.0	-35.7	-57.1	156	219	160	100	-37.5	-54.3	-35.9
Total	6,193	6,726	5,871	5,276	-10.1	-21.6	-14.8	52,834	59,580	48,134	47,087	-2.2	-21.0	-10.9
<u>LONDON OFFICE</u>														
<u>Northern Europe</u>														
U.K.	10,549	9,792	8,567	12,058	40.7	23.1	14.3	52,975	49,280	46,139	55,037	19.3	11.7	3.9
Denmark	19	52	43	28	-34.9	-46.2	47.4	553	369	242	176	-27.3	-52.3	-68.2
Finland	20	22	74	12	-83.8	-45.5	-40.0	177	184	214	270	26.2	46.7	52.5
Norway	27	38	133	44	-66.9	15.8	63.0	419	379	448	374	-16.5	-1.3	-10.7
Sweden	65	59	75	57	-24.0	-3.4	-12.3	671	681	549	450	-18.0	-33.9	-32.9
<u>Southern Europe</u>														
Greece	7	8	30	10	-66.7	25.0	42.9	282	93	93	123	32.3	32.3	-56.4
Italy	665	624	622	637	2.4	2.1	-4.2	7,193	6,068	5,142	11,713	127.8	93.0	62.8
Portugal	27	7	252	34	-86.5	385.7	25.9	160	112	404	195	-51.7	74.1	21.9
Spain	102	113	936	1,072	14.5	848.7	951.0	428	717	1,618	1,664	2.8	132.1	288.8
<u>Western Europe</u>														
Austria	161	128	82	131	59.8	2.3	-18.6	1,321	1,127	775	901	16.3	-20.1	-31.8
Belgium	86	63	114	198	73.7	214.3	130.2	465	480	503	681	35.4	41.9	46.5
France	183	155	230	213	-7.4	37.4	16.4	2,040	1,305	1,278	1,202	-5.9	-7.9	-41.1
Germany	1,843	1,661	1,157	1,163	0.5	-30.0	-36.9	12,255	9,919	5,937	7,165	20.7	-27.8	-41.5
Luxemburg	0	8	5	5	0.0	-37.5	-	42	44	24	31	29.2	-29.5	-26.2
Netherlands	251	218	180	251	39.4	15.1	0.0	1,602	1,077	811	1,320	62.8	22.6	-17.6
Switzerland	229	154	115	135	17.4	-12.3	-41.0	1,734	1,170	761	949	24.7	-18.9	-45.3
<u>Central/East Europe</u>														
Czechoslovakia	12	16	13	14	7.7	-12.5	16.7	87	157	124	177	42.7	12.7	103.4
Hungary	9	7	16	4	-75.0	-42.9	-55.6	107	88	109	75	-31.2	-14.8	-29.9
Poland	56	11	40	37	-7.5	236.4	-33.9	402	194	290	340	17.2	75.3	-15.4
Russia	45	72	67	132	97.0	83.3	193.3	401	482	563	639	13.5	32.6	59.4
Other Europe	58	38	110	47	-57.3	23.7	-19.0	415	400	441	509	15.4	27.2	22.7
Total	14,414	13,246	12,861	16,282	26.6	22.9	13.0	83,729	74,326	66,465	83,991	26.4	13.0	0.3

TABLE 2

TOTAL STOPOVER ARRIVALS BY PERMANENT RESIDENCE

	MAY							JANUARY - MAY						
	2000	2001	2002	2003	% C h a n g e			2000	2001	2002	2003	% C h a n g e		
					2003/02	2003/01	2003/00					2003/02	2003/01	2003/00
LATIN AMERICA														
CENTRAL AMERICA														
Mexico	208	220	152	159	4.6	-27.7	-23.6	905	1,077	750	751	0.1	-30.3	-17.0
Belize	31	36	30	107	256.7	197.2	245.2	176	181	194	554	185.6	206.1	214.8
Costa Rica	47	50	50	46	-8.0	-8.0	-2.1	238	266	291	217	-25.4	-18.4	-8.8
El Salvador	5	9	13	6	-53.8	-33.3	20.0	33	53	90	58	-35.6	9.4	75.8
Guatemala	24	32	45	32	-28.9	0.0	33.3	118	135	174	135	-22.4	0.0	14.4
Honduras	7	6	22	11	-50.0	83.3	57.1	62	92	69	67	-2.9	-27.2	8.1
Nicaragua	2	3	11	3	-72.7	0.0	50.0	25	18	37	14	-62.2	-22.2	-44.0
Panama	145	110	83	67	-19.3	-39.1	-53.8	626	566	418	430	2.9	-24.0	-31.3
Total	469	466	406	431	6.2	-7.5	-8.1	2,183	2,388	2,023	2,226	10.0	-6.8	2.0
SOUTH AMERICA														
Argentina	64	84	45	139	208.9	65.5	117.2	586	707	219	334	52.5	-52.8	-43.0
Bolivia	2	4	4	5	25.0	25.0	150.0	24	29	23	27	17.4	-6.9	12.5
Brazil	68	64	60	72	20.0	12.5	5.9	440	436	385	317	-17.7	-27.3	-28.0
Chile	56	45	52	43	-17.3	-4.4	-23.2	370	311	324	173	-46.6	-44.4	-53.2
Colombia	118	267	46	29	-37.0	-89.1	-75.4	682	813	246	423	72.0	-48.0	-38.0
Ecuador	9	40	22	9	-59.1	-77.5	0.0	66	123	86	23	-73.3	-81.3	-65.2
Guyana	153	130	166	144	-13.3	10.8	-5.9	669	642	571	666	16.6	3.7	-0.4
Paraguay	1	0	0	0	-	-	-100.0	13	7	9	7	-22.2	0.0	-46.2
Peru	17	40	58	23	-60.3	-42.5	35.3	124	141	164	146	-11.0	3.5	17.7
Surinam	23	25	30	17	-43.3	-32.0	-26.1	84	139	74	121	63.5	-12.9	44.0
Uruguay	6	9	1	6	500.0	-33.3	0.0	51	48	32	26	-18.8	-45.8	-49.0
Venezuela	71	68	319	50	-84.3	-26.5	-29.6	490	642	617	272	-55.9	-57.6	-44.5
Other South America	0	0	8	0	-	-	-	3	2	8	4	-50.0	100.0	33.3
Total	588	776	811	537	-33.8	-30.8	-8.7	3,602	4,040	2,758	2,539	-7.9	-37.2	-29.5
Total Latin America	1,057	1,242	1,217	968	-20.5	-22.1	-8.4	5,785	6,428	4,781	4,765	-0.3	-25.9	-17.6

TABLE 2

TOTAL STOPOVER ARRIVALS BY PERMANENT RESIDENCE

	MAY							JANUARY - MAY						
	2000	2001	2002	2003	% Change			2000	2001	2002	2003	% Change		
					2003/02	2003/01	2003/00					2003/02	2003/01	2003/00
CARIBBEAN														
Antigua	128	91	145	136	-6.2	49.5	6.3	629	526	532	577	8.5	9.7	-8.3
Bahamas	417	507	328	232	-29.3	-54.2	-44.4	2,443	2,459	1,488	1,055	-29.1	-57.1	-56.8
Barbados	351	317	415	336	-19.0	6.0	-4.3	2,015	1,601	1,791	1,949	8.8	21.7	-3.3
Bermuda	115	99	198	111	-43.9	12.1	-3.5	735	621	729	902	23.7	45.2	22.7
British Virgin Is.	28	31	29	25	-13.8	-19.4	-10.7	144	160	136	158	16.2	-1.2	9.7
Cayman Is.	678	866	1,074	1,146	6.7	32.3	69.0	4,220	4,757	4,168	4,735	13.6	-0.5	12.2
Dominica	36	24	31	22	-29.0	-8.3	-38.9	132	158	103	131	27.2	-17.1	-0.8
Grenada	59	44	52	50	-3.8	13.6	-15.3	250	218	205	229	11.7	5.0	-8.4
Monsterrat	9	11	5	5	0.0	-54.5	-44.4	48	43	22	41	86.4	-4.7	-14.6
St. Kitts/Nevis/Anguilla	50	44	60	58	-3.3	31.8	16.0	282	235	225	267	18.7	13.6	-5.3
St. Lucia	100	80	152	90	-40.8	12.5	-10.0	562	510	513	645	25.7	26.5	14.8
St. Vincent	33	35	56	36	-35.7	2.9	9.1	170	186	213	182	-14.6	-2.2	7.1
Turks & Caicos Is.	35	59	96	87	-9.4	47.5	148.6	163	359	326	368	12.9	2.5	125.8
Trinidad & Tobago	441	563	648	550	-15.1	-2.3	24.7	2,356	2,791	2,724	2,817	3.4	0.9	19.6
Comm. Caribbean	2,480	2,771	3,289	2,884	-12.3	4.1	16.3	14,149	14,624	13,175	14,056	6.7	-3.9	-0.7
Aruba	33	17	16	11	-31.3	-35.3	-66.7	101	86	115	193	67.8	124.4	91.1
Bonaire	0	0	0	8	-	-	-	0	0	0	16	-	-	-
Cuba	111	51	46	47	2.2	-7.8	-57.7	608	284	256	253	-1.2	-10.9	-58.4
Curacao	36	32	129	64	-50.4	100.0	77.8	223	166	378	585	54.8	252.4	162.3
Dominican Republic	63	82	75	73	-2.7	-11.0	15.9	339	335	395	307	-22.3	-8.4	-9.4
Guadelope	3	4	14	6	-57.1	50.0	100.0	22	28	38	33	-13.2	17.9	50.0
Haiti	37	68	66	56	-15.2	-17.6	51.4	181	202	262	316	20.6	56.4	74.6
St. Maarten	34	41	34	53	55.9	29.3	55.9	157	182	146	211	44.5	15.9	34.4
All other Caribbean	34	52	77	30	-61.0	-42.3	-11.8	174	197	194	198	2.1	0.5	13.8
Other Caribbean	351	347	457	348	-23.9	0.3	-0.9	1,805	1,480	1,784	2,112	18.4	42.7	17.0
TOTAL CARIBBEAN	2,831	3,118	3,746	3,232	-13.7	3.7	14.2	15,954	16,104	14,959	16,168	8.1	0.4	1.3
OTHER COUNTRIES														
African Countries	98	115	117	119	1.7	3.5	21.4	544	578	375	359	-4.3	-37.9	-34.0
Isreal	66	55	64	35	-45.3	-36.4	-47.0	322	400	280	297	6.1	-25.7	-7.8
Saudi Arabia	1	1	0	1	-	0.0	0.0	12	14	5	10	100.0	-28.6	-16.7
Turkey	10	2	7	7	0.0	250.0	-30.0	161	98	56	61	8.9	-37.8	-62.1
Other Middle East	14	18	17	29	70.6	61.1	107.1	93	143	101	98	-3.0	-31.5	5.4
India & Pakistan	67	99	70	54	-22.9	-45.5	-19.4	289	359	242	218	-9.9	-39.3	-24.6
Japan	610	475	345	250	-27.5	-47.4	-59.0	3,293	2,778	1,914	1,607	-16.0	-42.2	-51.2
China	40	26	43	22	-48.8	-15.4	-45.0	210	213	215	231	7.4	8.5	10.0
Taiwan	7	3	4	8	100.0	166.7	14.3	28	32	28	37	32.1	15.6	32.1
Korea	15	10	36	16	-55.6	60.0	6.7	90	119	111	78	-29.7	-34.5	-13.3
Philippines	34	30	44	66	50.0	120.0	94.1	294	227	286	575	101.0	153.3	95.6
Singapore	4	8	11	13	18.2	62.5	225.0	19	62	33	44	33.3	-29.0	131.6
Other Asia	21	19	25	20	-20.0	5.3	-4.8	120	165	90	102	13.3	-38.2	-15.0
Australia	177	122	126	589	367.5	382.8	232.8	662	632	566	1,120	97.9	77.2	69.2
New Zealand	25	15	41	22	-46.3	46.7	-12.0	93	115	137	95	-30.7	-17.4	2.2
All Other Ctries	11	4	14	0	-100.0	-100.0	-100.0	31	27	34	3	-91.2	-88.9	-90.3
Total	1,200	1,002	964	1,251	29.8	24.9	4.2	6,261	5,962	4,473	4,935	10.3	-17.2	-21.2
GRAND TOTAL	103,266	104,766	99,314	102,021	2.7	-2.6	-1.2	564,916	588,930	520,310	556,244	6.9	-5.6	-1.5

STOPOVER VISITORS BY MARKET SHARE

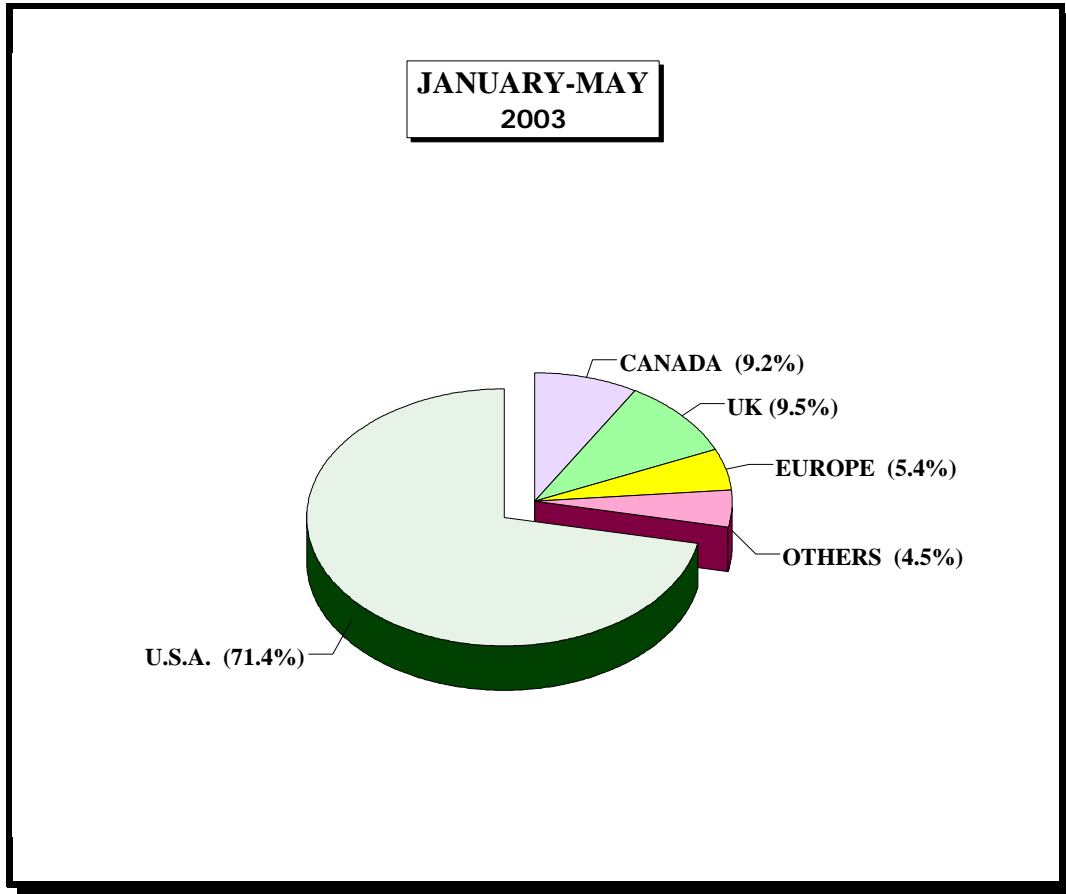


Fig. 2

Country	May 2003	% Share	Jan. - May 2003	% Share	Jan. - May 2002	% Share	%Change 2003/02
U.S.A	75,012	73.5%	399,298	71.8%	381,498	73.3%	4.7%
CANADA	5,276	5.2%	47,087	8.5%	48,134	9.3%	-2.2%
U.K.	12,058	11.8%	55,037	9.9%	46,139	8.9%	19.3%
EUROPE	4,224	4.1%	28,954	5.2%	20,326	3.9%	42.4%
OTHERS	5,451	5.3%	25,868	4.7%	24,213	4.7%	6.8%
Total	102,021	100.0%	556,244	100.0%	520,310	100.0%	6.9%

TABLE 3

<u>AVERAGE LENGTH OF STAY (Nights)</u>					
<u>FOREIGN NATIONALS</u>					
	All Types of Accommodation			Hotel	
	2002	2003		2002	2003
January	10.4	10.1		6.7	6.6
February	9.0	8.8		6.5	6.3
March	8.4	8.5		6.2	6.1
April	9.3	8.9		6.2	6.2
May	9.2	9.2		5.8	5.9
Jan. - May	9.2	9.0		6.3	6.3

Note: LENGTH OF STAY IS BASED ON INTENDED LENGTH OF STAY

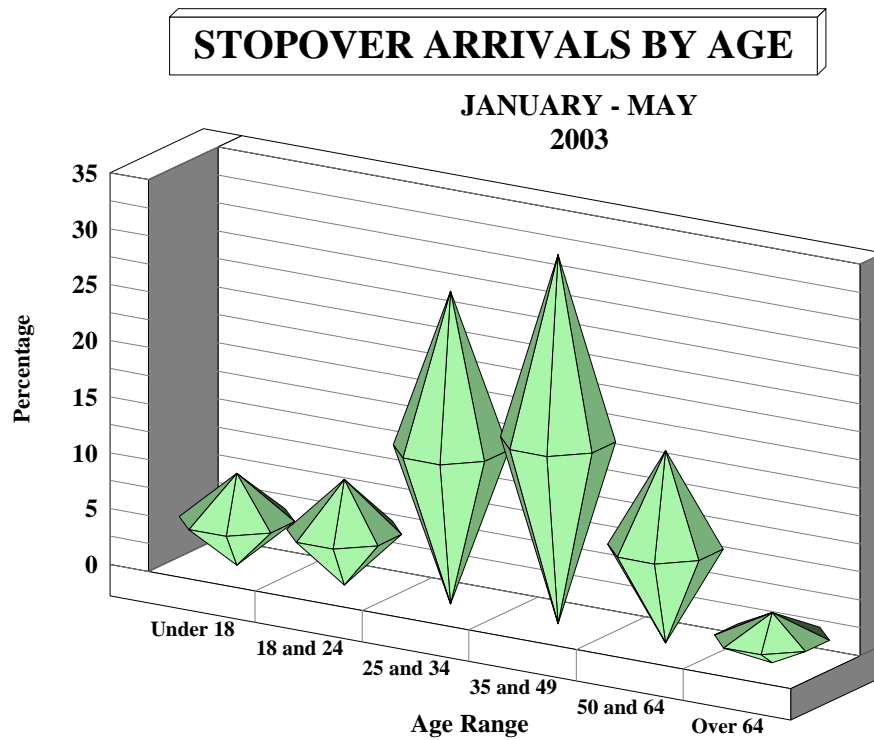


Fig. 3

AGE DISTRIBUTION OF STOPOVER ARRIVALS

Age	MAY		JAN.-MAY		JAN.-MAY		%Change 2003/02
	2003	% Share	2003	% Share	2002	% Share	
Under 18	8,345	8.2	57,477	10.3	51,666	9.9	11.2%
18 and 24	9,587	9.4	51,691	9.3	48,614	9.3	6.3%
25 and 34	28,487	27.9	123,833	22.3	121,488	23.3	1.9%
35 and 49	33,545	32.9	190,631	34.3	178,315	34.3	6.9%
50 and 64	17,539	17.2	105,516	19.0	94,797	18.2	11.3%
Over 64	4,518	4.4	27,096	4.9	25,430	4.9	6.6%
Total	102,021	100.0	556,244	100.0	520,310	100.0	6.9%

TABLE 4

**CRUISE PASSENGER ARRIVALS BY MONTH AND PORT OF CALL
JANUARY - MAY 2003**

	MONTEGO BAY		% Change 2003/02		OCHO RIOS		% Change 2003/02		2003 TOTAL		2002 TOTAL		% Change 2003/02	
	CALLS	PAX	CALLS	PAX	CALLS	PAX	CALLS	PAX	CALLS	PAX	CALLS	PAX	CALLS	PAX
January	25	43,827	56.3%	74.4%	35	75,007	16.7%	13.2%	60	118,834	46	91,399	30.4%	30.0%
February	24	39,006	71.4%	121.0%	35	77,390	20.7%	30.8%	60	116,451	43	76,799	39.5%	51.6%
March	27	38,558	92.9%	100.8%	41	89,932	57.7%	49.2%	69	128,758	41	79,547	68.3%	61.9%
April	19	33,601	216.7%	335.1%	30	74,408	-6.3%	9.9%	49	108,009	38	75,442	28.9%	43.2%
Jan. - Apr.	95	154,992	90.0%	122.3%	141	316,737	20.5%	25.0%	238	472,052	168	323,187	41.7%	46.1%
May	7	16,907	40.0%	52.0%	18	47,443	5.9%	9.5%	25	64,350	22	54,453	13.6%	18.2%
Jan. - May	102	171,899	85.5%	112.7%	159	364,180	18.7%	22.7%	263	536,402	190	377,640	38.4%	42.0%

- * Note:
1. During the month of January three Cruise Ship calls with 3,174 Cruise passengers visited two ports.
 2. During the month of February 2 Cruise Ship calls with 2,798 Cruise passengers visited two ports.
 3. Included in the total Cruise passengers for the month of February, 1 call with 55 passengers visited Port Antonio.
 4. During the month of March 3 Cruise Ship calls with 2,679 Cruise passengers visited two ports.
 5. Included in the total Cruise passengers for the month of March, 1 call with 268 passengers visited Kingston.

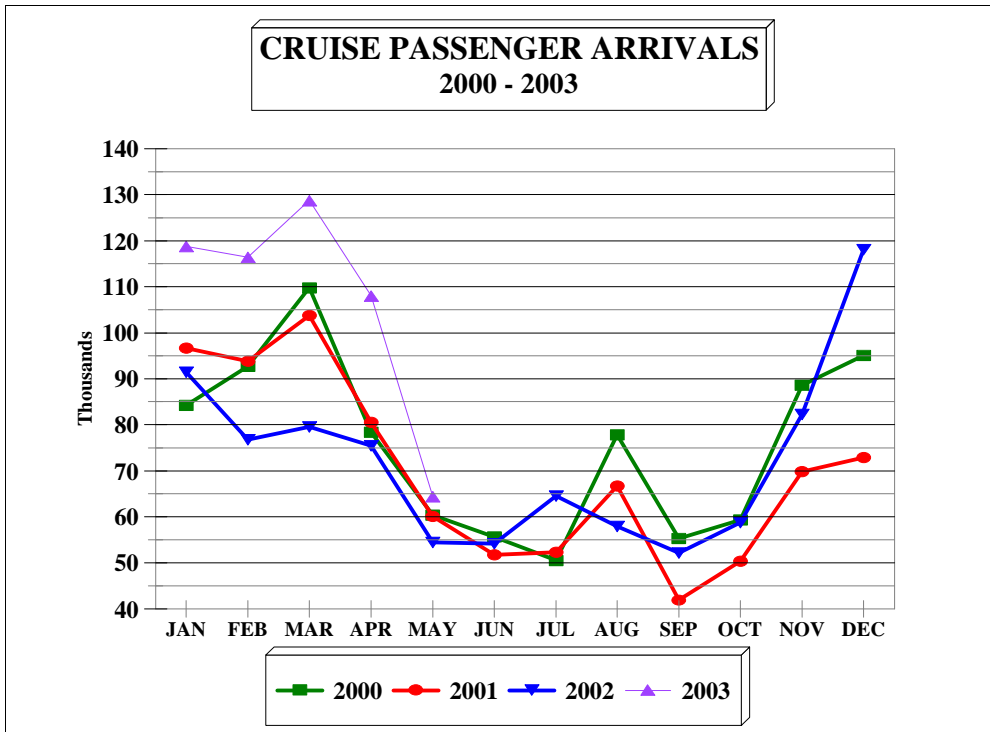


FIG. 4

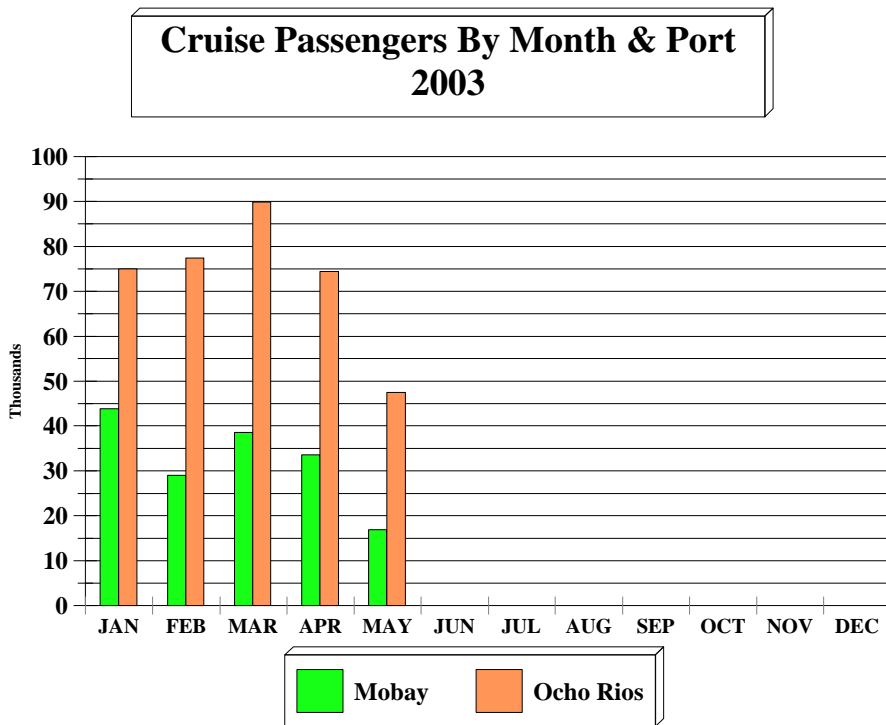


FIG. 4a

TABLE 5A
LANDED TOURISTS BY SCHEDULED & CHARTERED AIRLINES

	<u>MAY 2003</u>			<u>JANUARY - MAY 2002</u>		
	<u>SCHEDULED AIRLINES</u>	<u>CHARTERED AIRLINES</u>	<u>TOTAL STOPOVERS</u>	<u>SCHEDULED AIRLINES</u>	<u>CHARTERED AIRLINES</u>	<u>TOTAL STOPOVERS</u>
U.S.A.						
<u>NORTHEAST (NEW YORK)</u>						
Connecticut	1,465	0	1,465	9,804	269	10,073
Delaware	405	0	405	2,163	15	2,178
Maine	160	0	160	1,322	20	1,342
Maryland	2,870	4	2,874	13,738	205	13,943
Massachusetts	1,968	1	1,969	14,048	445	14,493
New Hampshire	267	0	267	2,283	78	2,361
New Jersey	4,568	1	4,569	24,834	352	25,186
New York	11,561	45	11,606	62,578	1,614	64,192
Pennsylvania	4,187	4	4,191	23,140	474	23,614
Rhode Island	275	0	275	1,659	57	1,716
Vermont	91	0	91	877	21	898
Virginia	1,690	27	1,717	8,376	367	8,743
Washington D.C.	409	1	410	2,013	31	2,044
West Virginia	121	0	121	672	27	699
Total	30,037	83	30,120	167,507	3,975	171,482
<u>MIDWEST (CHICAGO)</u>						
Illinois	2,286	1,320	3,606	14,268	10,669	24,937
Indiana	862	188	1,050	4,457	2,022	6,479
Iowa	315	101	416	2,983	1,402	4,385
Kansas	256	36	292	1,533	258	1,791
Kentucky	339	139	478	1,882	565	2,447
Michigan	2,052	100	2,152	9,683	6,278	15,961
Minnesota	819	14	833	7,367	5,985	13,352
Missouri	584	1,362	1,946	2,716	6,061	8,777
Nebraska	310	6	316	1,937	96	2,033
North Dakota	60	4	64	503	196	699
Ohio	1,361	136	1,497	7,068	1,615	8,683
South Dakota	121	0	121	742	322	1,064
Wisconsin	835	410	1,245	5,664	10,823	16,487
Total	10,200	3,816	14,016	60,803	46,292	107,095

TABLE 5A
LANDED TOURISTS BY SCHEDULED & CHARTERED AIRLINES

	<u>MAY 2003</u>			<u>JANUARY - MAY 2002</u>		
	<u>SCHEDULED AIRLINES</u>	<u>CHARTERED AIRLINES</u>	<u>TOTAL STOPOVERS</u>	<u>SCHEDULED AIRLINES</u>	<u>CHARTERED AIRLINES</u>	<u>TOTAL STOPOVERS</u>
<u>SOUTH (MIAMI)</u>						
Alabama	921	60	981	2,857	144	3,001
Arkansas	289	29	318	1,034	108	1,142
Florida	10,923	16	10,939	43,632	150	43,782
Georgia	4,076	295	4,371	15,565	696	16,261
Louisiana	511	267	778	1,883	279	2,162
Mississippi	336	68	404	1,035	90	1,125
North Carolina	1,561	85	1,646	6,758	422	7,180
Oklahoma	277	246	523	1,054	309	1,363
Puerto Rico	95	0	95	496	1	497
South Carolina	837	38	875	3,077	149	3,226
Tennessee	1,031	107	1,138	4,747	307	5,054
Texas	2,655	800	3,455	10,627	873	11,500
Total	<u>23,512</u>	<u>2,011</u>	<u>25,523</u>	<u>92,765</u>	<u>3,528</u>	<u>96,293</u>
<u>WEST (LOS ANGELES)</u>						
Alaska	24	0	24	153	4	157
Arizona	479	5	484	1,711	35	1,746
California	3,176	8	3,184	13,404	203	13,607
Colorado	564	7	571	2,714	119	2,833
Hawaii	13	2	15	90	9	99
Idaho	79	1	80	547	5	552
Montana	35	0	35	471	5	476
Nevada	213	3	216	938	17	955
New Mexico	79	4	83	347	13	360
Oregon	190	0	190	953	17	970
Utah	127	0	127	689	19	708
Washington	311	2	313	1,733	41	1,774
Wyoming	31	0	31	185	6	191
Total	<u>5,321</u>	<u>32</u>	<u>5,353</u>	<u>23,935</u>	<u>493</u>	<u>24,428</u>
TOTAL U.S.A.	<u>69,070</u>	<u>5,942</u>	<u>75,012</u>	<u>345,010</u>	<u>54,288</u>	<u>399,298</u>

TABLE 5A
LANDED TOURISTS BY SCHEDULED & CHARTERED AIRLINES

	MAY 2003			JANUARY - MAY 2002		
	SCHEDULED AIRLINES	CHARTERED AIRLINES	TOTAL STOPOVERS	SCHEDULED AIRLINES	CHARTERED AIRLINES	TOTAL STOPOVERS
<u>CANADA (TORONTO)</u>						
Alberta	243	5	248	1,967	131	2,098
British Columbia	210	7	217	1,305	64	1,369
Manitoba	61	7	68	1,162	831	1,993
New Brunswick	29	0	29	602	21	623
Newfoundland	57	2	59	289	21	310
Nova Scotia	94	0	94	1,049	19	1,068
Ontario	2,823	1,285	4,108	20,132	12,610	32,742
P.E. Island	12	2	14	117	2	119
Quebec	377	7	384	3,942	1,919	5,861
Saskatchewan	45	1	46	625	177	802
Other Canada	9	0	9	76	26	102
Total	3,960	1,316	5,276	31,266	15,821	47,087
<u>LONDON OFFICE</u>						
<u>Northern Europe</u>						
U.K.	8,258	3,800	12,058	37,623	17,414	55,037
Denmark	28	0	28	172	4	176
Finland	12	0	12	262	8	270
Norway	44	0	44	365	9	374
Sweden	56	1	57	435	15	450
<u>Southern Europe</u>						
Greece	9	1	10	114	9	123
Italy	271	366	637	4,477	7,236	11,713
Portugal	30	4	34	189	6	195
Spain	126	946	1,072	694	970	1,664
<u>Western Europe</u>						
Austria	130	1	131	761	140	901
Belgium	198	0	198	624	57	681
France	209	4	213	1,182	20	1,202
Germany	1,155	8	1,163	6,885	280	7,165
Luxemburg	5	0	5	30	1	31
Netherlands	250	1	251	995	325	1,320
Switzerland	133	2	135	883	66	949
<u>Central/East Europe</u>						
Czechoslovakia	14	0	14	171	6	177
Hungary	4	0	4	70	5	75
Poland	37	0	37	321	19	340
Russia	130	2	132	629	10	639
Other Europe	43	4	47	476	33	509
Total	11,142	5,140	16,282	57,358	26,633	83,991

TABLE 5A
LANDED TOURISTS BY SCHEDULED & CHARTERED AIRLINES

	<u>MAY 2003</u>			<u>JANUARY - MAY 2002</u>		
	<u>SCHEDULED AIRLINES</u>	<u>CHARTERED AIRLINES</u>	<u>TOTAL STOPOVERS</u>	<u>SCHEDULED AIRLINES</u>	<u>CHARTERED AIRLINES</u>	<u>TOTAL STOPOVERS</u>
<u>OTHER COUNTRIES</u>						
<u>CENTRAL AMERICA</u>						
Mexico	158	1	159	745	6	751
Belize	107	0	107	554	0	554
Costa Rica	46	0	46	217	0	217
El Salvador	6	0	6	58	0	58
Guatemala	32	0	32	135	0	135
Honduras	11	0	11	67	0	67
Nicaragua	3	0	3	14	0	14
Panama	67	0	67	430	0	430
Total	430	1	431	2,220	6	2,226
<u>SOUTH AMERICA</u>						
Argentina	139	0	139	334	0	334
Bolivia	5	0	5	27	0	27
Brazil	72	0	72	316	1	317
Chile	43	0	43	173	0	173
Colombia	29	0	29	165	258	423
Ecuador	9	0	9	23	0	23
Guyana	144	0	144	666	0	666
Paraguay	0	0	0	7	0	7
Peru	23	0	23	146	0	146
Surinam	17	0	17	121	0	121
Uruguay	6	0	6	26	0	26
Venezuela	50	0	50	269	3	272
Other South America	0	0	0	4	0	4
Total	537	0	537	2,277	262	2,539
Total Latin America	967	1	968	4,497	268	4,765

TABLE 5A
LANDED TOURISTS BY SCHEDULED & CHARTERED AIRLINES

	<u>MAY 2003</u>			<u>JANUARY - MAY 2002</u>		
	<u>SCHEDULED AIRLINES</u>	<u>CHARTERED AIRLINES</u>	<u>TOTAL STOPOVERS</u>	<u>SCHEDULED AIRLINES</u>	<u>CHARTERED AIRLINES</u>	<u>TOTAL STOPOVERS</u>
<u>CARIBBEAN</u>						
Antigua	135	1	136	575	2	577
Bahamas	232	0	232	1,049	6	1,055
Barbados	336	0	336	1,949	0	1,949
Bermuda	110	1	111	744	158	902
British Virgin Is.	25	0	25	158	0	158
Cayman Is.	1,146	0	1,146	4,734	1	4,735
Dominica	22	0	22	133	0	133
Grenada	50	0	50	229	0	229
Monsterrat	5	0	5	40	1	41
St. Kitts/Nevis/Anguilla	57	1	58	266	1	267
St. Lucia	90	0	90	645	0	645
St. Vincent	36	0	36	181	1	182
Turks & Caicos Is.	87	0	87	368	0	368
Trinidad & Tobago	550	0	550	2,816	1	2,817
Comm. Caribbean	2,881	3	2,884	13,887	171	14,058
Aruba	11	0	11	193	0	193
Bonaire	8	0	8	16	0	16
Cuba	47	0	47	253	0	253
Curacao	64	0	64	585	0	585
Dominican Republic	73	0	73	305	0	305
Guadelope	6	0	6	33	0	33
Haiti	56	0	56	315	1	316
St. Maarten	53	0	53	211	0	211
All other Caribbean	30	0	30	198	0	198
Other Caribbean	348	0	348	2,109	1	2,110
TOTAL CARIBBEAN	3,229	3	3,232	15,996	172	16,168
<u>OTHER COUNTRIES</u>						
African Countries	119	0	119	348	11	359
Isreal	35	0	35	291	6	297
Saudi Arabia	1	0	1	10	0	10
Turkey	7	0	7	51	10	61
Other Middle East	28	1	29	97	2	99
India & Pakistan	54	0	54	203	14	217
Japan	249	1	250	1,596	11	1,607
China	22	0	22	193	38	231
Taiwan	8	0	8	37	0	37
Korea	16	0	16	75	3	78
Philippines	66	0	66	574	1	575
Singapore	12	1	13	42	2	44
Other Asia	20	0	20	100	2	102
Australia	589	0	589	1,113	7	1,120
New Zealand	22	0	22	95	0	95
All Other Ctries	0	0	0	3	0	3
Total	1,248	3	1,251	4,828	107	4,935
GRAND TOTAL	89,616	12,405	102,021	458,955	97,289	556,244

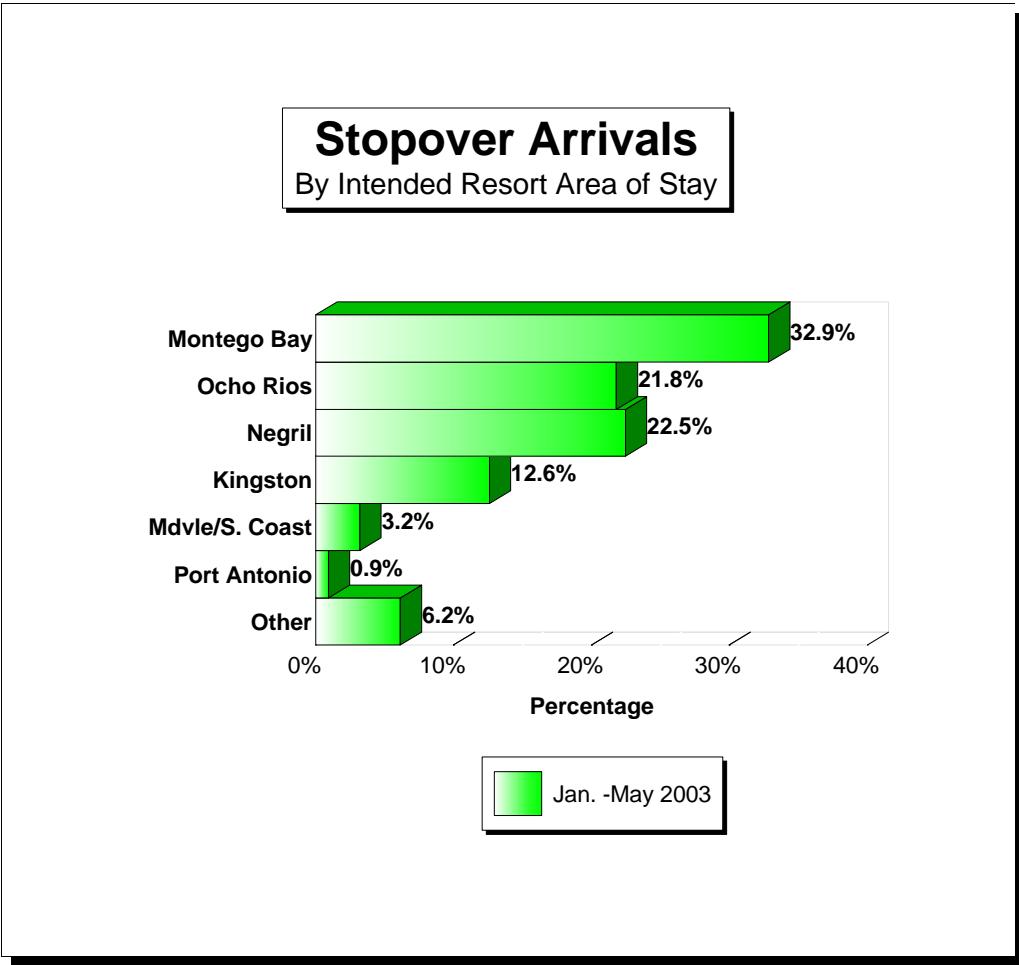


Fig. 5

STOPOVER ARRIVALS BY INTENDED AREA OF STAY

Area	MAY		JAN.-MAY		JAN.-MAY		%Change 2003/02
	2003	%Share	2003	%Share	2002	%Share	
Montego Bay	33,400	32.7%	182,831	32.9%	168,113	32.3%	8.8%
Ocho Rios	20,341	19.9%	121,157	21.8%	110,942	21.3%	9.2%
Negril	21,184	20.8%	125,067	22.5%	120,306	23.1%	4.0%
Kingston	15,051	14.8%	70,149	12.6%	67,425	13.0%	4.0%
Mdvle/S. Coast	3,835	3.8%	17,719	3.2%	16,896	3.2%	4.9%
Port Antonio	982	1.0%	5,076	0.9%	5,117	1.0%	-0.8%
Other	7,228	7.1%	34,245	6.2%	31,511	6.1%	8.7%
Total	102,021	100.0%	556,244	100.0%	520,310	100.0%	6.9%