

## MONTHLY STATISTICAL REPORT

Volume X111, Issue 111

March 2003

### TOURIST (Stopovers)

Stopover arrivals in March 2003 were **129,485**, a decline of **1%** over the **130,200** recorded for March 2002. Cumulatively, stopovers for the January to March period increased by **7%**. There was a total of **342,249** stopovers for the period compared to **320,249** in 2002.

#### United States

Stopover arrivals from the United States market declined by **2%** in March with a total of **96,532** visitors compared to the **98,939** visitors who came in March 2002. Except for the Midwest which increased by **6%**, all the other marketing regions recorded declines. The Northeast declined by **6%**, the West by **9%** and the South by **4%**.

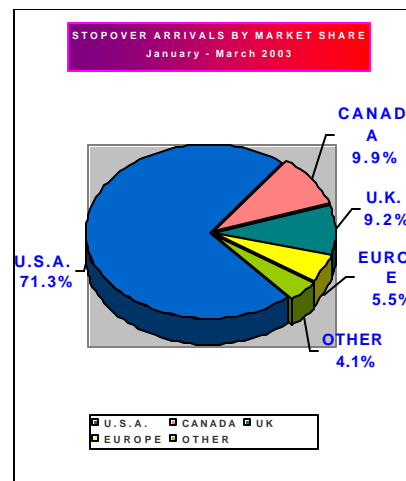
For the January to March period the US market increased by **5%**. Total visitors from this market for the period was **244,083** compared to **233,082** for the corresponding period in 2002. The Northeast increased by **5%**, the Midwest by **8%** the South by **2%**, but the West declined by **3%**.

#### Canada

In March, the Canadian market declined by **7%** and was down also by **26%** against March 2001. Total stopovers from the Canadian market in March were **10,779** compared to **11,573** in 2002. While the leading province Ontario declined by **13%**, the second most important visitor-producing province Quebec also declined by **12%**. Of the other leading provinces Manitoba increased by **207%** and Alberta by **13%**. British

Columbia declined by **2%**. The provinces of Saskatchewan, New Brunswick and Nova Scotia also recorded good growth though from relatively small bases.

Cumulatively, the Canadian market increased by less than **1%** in the January to March period with a total of **33,874** stopovers compared to **33,762** in 2002.



#### Europe

The European market continued to show remarkable improvement when it recorded a **20%** increase in March 2003. The market provided a total of **17,088** stopover visitors compared to the **14,297** recorded in March 2002 and was also up against the **15,637** stopovers who came in March 2001. The United Kingdom and Germany increased by **11%** and **25%** respectively. All the main European country markets except Belgium, Austria, and Switzerland recorded increases. Italy increased by **122%** and Spain by **10%** despite from relatively small bases.

Cumulatively, for the January to March period, the European market increased by **24%**. Total stopovers for the period was **50,186**, compared to **40,398** in 2002. Both the United Kingdom and Germany recorded increases. The United Kingdom with a total of **31,523** stopovers recorded an increase of **12%** while Germany with **4,733** visitors recorded an increase of **24%**.

#### Latin America

The Latin American market increased by **1%** in March with a total of **892** stopovers compared to **887** in March 2002. While Argentina and Chile increased by **31%** and **4%** respectively, the other three leading countries declined in March. Mexico (**2%**), Colombia (**35%**), and Brazil (**27%**).

For the January to March period, the Latin American market increased by **8%** with a total of **2,756** visitors compared to **2,547** for the corresponding period in 2002.

While cruise passenger arrivals to Montego Bay in the three-month period almost doubled with a **96%** increase, arrivals to Ocho Rios scored a healthy **31%** for that period.

## The Caribbean

Visitors to Jamaica from the Caribbean region declined by **9%** in March. A total of **3,197** visitors from other Caribbean countries visited Jamaica, down from **3,496** in March 2002. Arrivals were down by **11%** against March 2000.

The major Caribbean countries which provided visitors to Jamaica in March were: the Cayman Islands (**798**), Trinidad and Tobago (**522**), Barbados (**484**), the Bahamas (**198**), Antigua (**98**), Bermuda (**277**), and St. Lucia (**143**). Except for Barbados and Bermuda which increased in March, all the other major Caribbean countries recorded declines against March 2002.

Cumulatively, the Caribbean stopover arrivals to Jamaica in the January to March period increased by **7%** moving from **8,041** in 2002 to **8,612** in 2003. In the period under review, the top Caribbean countries that provided stopover visitors to Jamaica were the Cayman Islands with **2,368**, Trinidad and Tobago with **1,496**, Barbados with **1,111** and the Bahamas with **557**.

## Japan

The Japanese market declined by **22%** in March with a total of **360** stopovers compared to **460** in March 2002 but was down by **34%** against the **541** for the corresponding period in 2001.

For the January to March period, Japan declined by **4%** with **1,046** visitors compared to **1,090** in 2002.

## Other Countries

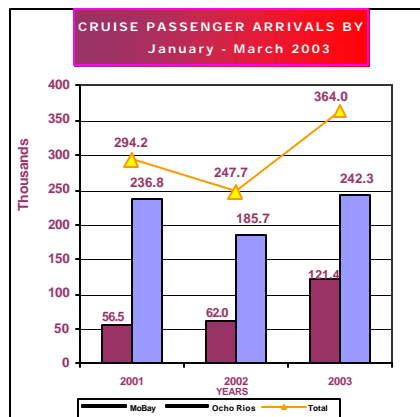
Of the other countries, Australia with a total of **346** stopovers in January to March period recorded an increase of **2%** against the **339** who came in January to March 2002.

## Market Share

The market share of stopover visitors for the January to March period were as follows:

USA **71.3%**; Canada **9.9%**; UK **9.2%**; Continental Europe **5.5%** the Caribbean **2.5%**; Latin America **0.8%**; Japan **0.3%** and Other Countries **0.5%**.

## Cruise Passengers



A total of **128,758** cruise passengers visited Jamaica in March 2003. This represents a **62%** increase against the **79,547** recorded for March 2002. Cumulatively, a total of **364,043** cruise passengers visited Jamaica in the January to March period. This represents a **47%** increase against the **247,745** recorded for the corresponding period in 2002.

A total of **89,932** cruise passengers visited the port of Ocho Rios in March, an increase of **49%** over

the **60,269** recorded for March 2002. Montego Bay recorded a total of **38,558** cruise passengers for the month, an increase of some **101%** against the **19,206** recorded for 2002.

For the January to March period cruise passenger arrivals to the port of Ocho Rios was **242,329** an increase of **31%** against the **185,686** for the corresponding period in 2002. In the case of Montego Bay, cruise passenger arrivals was **121,391** an increase of **96%** against the **61,987** recorded for the same period in 2002.

## Length of Stay

The average length of stay of stopovers in March was **8.5** nights against **8.4** for March 2002. The average length of stay in hotels was **6.1** nights compared to **6.2** nights in March 2002. Cumulatively, the average length of stay for the January to March period was **9.1** nights the same as that recorded for the similar period in 2002.

## First and Repeat Visitors

Approximately **60%** or **74,063** of the **124,143** foreign nationals who visited Jamaica in March were first-time visitors and the other **40%** or **50,080** were repeat guests.

Cumulatively, in the January to March period, some **56%** of the **326,458** Foreign Nationals who visited the island were first-time guests and **44%** were repeat guests.

**TABLE 1**  
**TOURIST ARRIVALS**  
 January - March  
2003

Month	<----- Stopovers ----->						Total Stopover Arrivals	+/- 2003/02	+/- 2003/01
	Foreign Nationals	+/- 2003/02	+/- 2003/01	Non-Resident Jamaicans	+/- 2003/02	+/- 2003/01			
January	95,875	12.6%	-0.9%	5,431	9.0%	5.2%	101,306	12.4%	-0.6%
February	106,440	11.7%	-1.0%	5,018	6.0%	-14.3%	111,458	11.4%	-1.7%
March	124,143	0.4%	-8.9%	5,342	-18.1%	-23.1%	129,485	-0.5%	-9.6%
<b>Jan.-Mar.</b>	<b>326,458</b>	<b>7.4%</b>	<b>-4.1%</b>	<b>15,791</b>	<b>-2.8%</b>	<b>-12.1%</b>	<b>342,249</b>	<b>6.9%</b>	<b>-4.5%</b>

## STOPOVER ARRIVALS FOREIGN NATIONALS

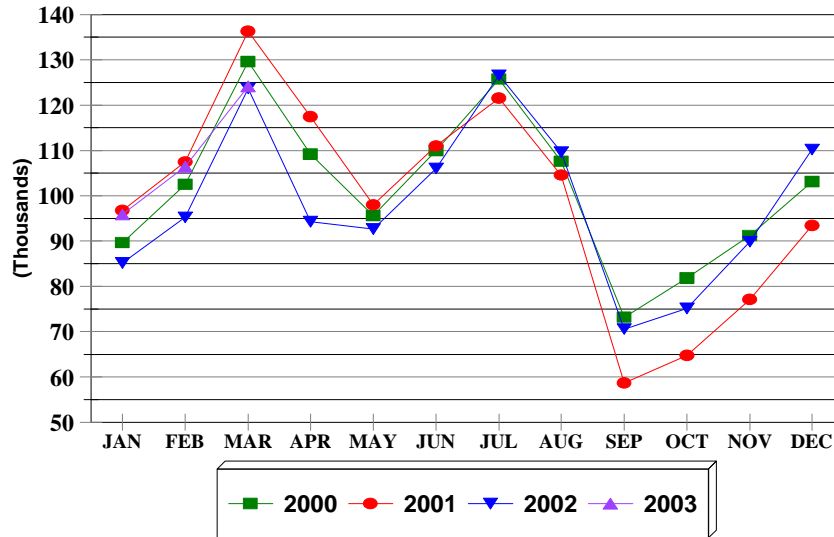


FIG. 1

## STOPOVER ARRIVALS NON-RESIDENT JAMAICANS

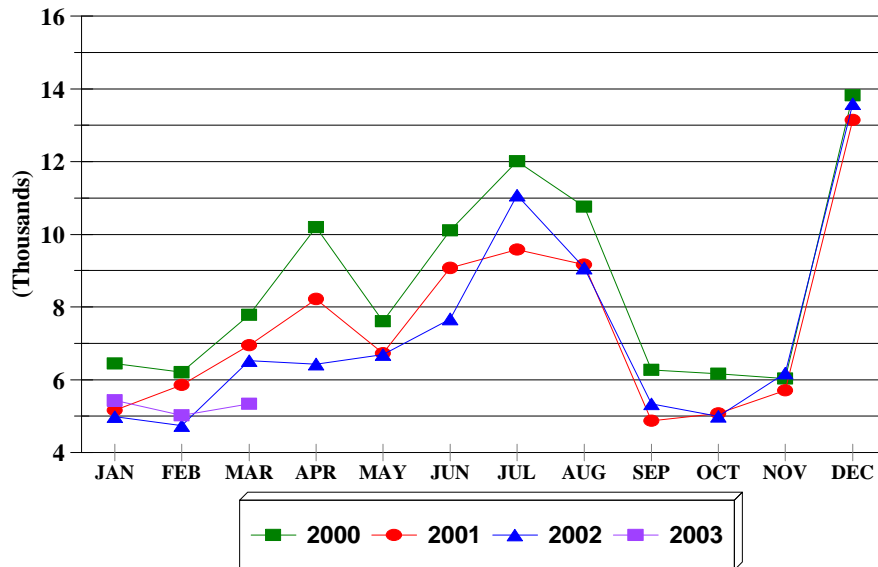


FIG. 1a

**TABLE 1.1**

**First & Repeat Visit to Jamaica**

FOREIGN NATIONALS

2003

	Arrivals				TOTAL	% SHARE	
	First Visit	+/-	Repeat Visit	+/-		First Visit	Repeat Visit
Jan.	51,389	-4.1	44,486	3.2	95,875	53.6	46.4
Feb.	56,644	-4.7	49,796	3.6	106,440	53.2	46.8
Mar.	74,063	-14.3	50,080	0.4	124,143	59.7	40.3
Jan.-Mar.	182,096	-8.7	144,362	2.3	326,458	55.8	44.2

**TABLE 1.2**

**STOPOVER ARRIVALS BY MARKET REGION  
AND MONTH OF ARRIVAL 2003**

	U.S.A.				Canada	U.K. Europe	Latin America	Caribbean	Asia	Other Countries	Total
	Northeast	Mid-West	South	West							
<b>January</b>	28,497	21,351	14,638	4,110	11,589	16,286	1,087	2,821	635	292	101,306
<b>February</b>	35,006	25,007	14,940	4,002	11,506	16,812	777	2,594	578	236	111,458
<b>March</b>	40,262	29,316	21,505	5,449	10,779	17,088	892	3,197	695	302	129,485
<b>Jan.-Feb.</b>	<b>103,765</b>	<b>75,674</b>	<b>51,083</b>	<b>13,561</b>	<b>33,874</b>	<b>50,186</b>	<b>2,756</b>	<b>8,612</b>	<b>1,908</b>	<b>830</b>	<b>342,249</b>
<b>+/- %</b>	<b>4.7%</b>	<b>8.4%</b>	<b>1.6%</b>	<b>-2.5%</b>	<b>0.3%</b>	<b>24.2%</b>	<b>8.2%</b>	<b>7.1%</b>	<b>17.6%</b>	<b>-2.9%</b>	<b>6.9%</b>

TABLE 2

## TOTAL STOPOVER ARRIVALS BY PERMANENT RESIDENCE

	MARCH			% Change			JANUARY - MARCH			% Change				
	2000	2001	2002	2003	2003/02	2003/01	2003/00	2000	2001	2002	2003	2003/02	2003/01	2003/00
<b>U.S.A.</b>														
<b><u>NORTHEAST (NEW YORK)</u></b>														
Connecticut	3,032	3,191	2,376	2,700	13.6	-15.4	-10.9	6,379	6,698	5,522	6,429	16.4	-4.0	0.8
Delaware	518	698	555	493	-11.2	-29.4	-4.8	1,221	1,502	1,151	1,282	11.4	-14.6	5.0
Maine	374	477	357	358	0.3	-24.9	-4.3	983	1,037	801	885	10.5	-14.7	-10.0
Maryland	2,847	3,440	3,271	2,882	-11.9	-16.2	1.2	7,086	8,042	7,736	8,000	3.4	-0.5	12.9
Massachusetts	4,036	5,280	3,596	3,954	10.0	-25.1	-2.0	9,448	11,670	9,177	9,769	6.5	-16.3	3.4
New Hampshire	599	815	517	647	25.1	-20.6	8.0	1,560	1,977	1,470	1,566	6.5	-20.8	0.4
New Jersey	5,313	6,265	5,918	5,986	1.1	-4.5	12.7	13,046	14,842	13,736	14,826	7.9	-0.1	13.6
New York	14,563	16,270	16,637	13,361	-19.7	-17.9	-8.3	38,532	41,108	37,921	37,219	-1.9	-9.5	-3.4
Pennsylvania	5,311	6,320	5,852	6,069	3.7	-4.0	14.3	12,419	14,822	13,541	15,242	12.6	2.8	22.7
Rhode Island	427	626	363	515	41.9	-17.7	20.6	1,042	1,215	924	1,157	25.2	-4.8	11.0
Vermont	241	284	237	209	-11.8	-26.4	-13.3	671	706	517	577	11.6	-18.3	-14.0
Virginia	2,685	2,502	2,354	2,320	-1.4	-7.3	-13.6	4,944	5,398	5,017	5,141	2.5	-4.8	4.0
Washington D.C.	579	610	492	533	8.3	-12.6	-7.9	1,239	1,307	1,138	1,233	8.3	-5.7	-0.5
West Virginia	238	313	239	235	-1.7	-24.9	-1.3	485	591	458	439	-4.1	-25.7	-9.5
<b>Total</b>	<b>40,763</b>	<b>47,091</b>	<b>42,764</b>	<b>40,262</b>	<b>-5.9</b>	<b>-14.5</b>	<b>-1.2</b>	<b>99,055</b>	<b>110,915</b>	<b>99,109</b>	<b>103,765</b>	<b>4.7</b>	<b>-6.4</b>	<b>4.8</b>
<b><u>MIDWEST (CHICAGO)</u></b>														
Illinois	7,033	6,476	5,758	6,884	19.6	6.3	-2.1	17,132	16,467	15,039	16,947	12.7	2.9	-1.1
Indiana	2,117	1,912	1,733	2,051	18.3	7.3	-3.1	4,298	4,049	4,003	4,409	10.1	8.9	2.6
Iowa	1,131	1,172	985	1,123	14.0	-4.2	-0.7	2,727	3,244	3,207	3,611	12.6	11.3	32.4
Kansas	970	921	516	534	3.5	-42.0	-44.9	1,668	1,726	1,067	1,241	16.3	-28.1	-25.6
Kentucky	733	753	732	582	-20.5	-22.7	-20.6	1,343	1,594	1,582	1,410	-10.9	-11.5	5.0
Michigan	3,886	4,690	4,312	4,350	0.9	-7.2	11.9	10,480	11,798	9,927	10,649	7.3	-9.7	1.6
Minnesota	4,441	4,066	3,764	4,102	9.0	0.9	-7.6	11,017	10,745	9,812	10,758	9.6	0.1	-2.4
Missouri	2,046	1,980	1,911	2,032	6.3	2.6	-0.7	4,790	5,063	4,715	5,457	15.7	7.8	13.9
Nebraska	497	513	365	430	17.8	-16.2	-13.5	1,215	1,629	1,052	1,486	41.3	-8.8	22.3
North Dakota	201	187	201	199	-1.0	6.4	-1.0	550	546	512	565	10.4	3.5	2.7
Ohio	3,243	2,904	2,873	2,414	-16.0	-16.9	-25.6	6,318	6,460	6,150	5,544	-9.9	-14.2	-12.3
South Dakota	177	235	129	312	141.9	32.8	76.3	558	630	499	876	75.6	39.0	57.0
Wisconsin	4,957	4,640	4,474	4,303	-3.8	-7.3	-13.2	13,213	13,360	12,215	12,721	4.1	-4.8	-3.7
<b>Total</b>	<b>31,432</b>	<b>30,449</b>	<b>27,753</b>	<b>29,316</b>	<b>5.6</b>	<b>-3.7</b>	<b>-6.7</b>	<b>75,309</b>	<b>77,311</b>	<b>69,780</b>	<b>75,674</b>	<b>8.4</b>	<b>-2.1</b>	<b>0.5</b>

TABLE 2

## TOTAL STOPOVER ARRIVALS BY PERMANENT RESIDENCE

	MARCH			% Change			JANUARY - MARCH			% Change				
	2000	2001	2002	2003	2003/02	2003/01	2003/00	2000	2001	2002	2003	2003/02	2003/01	2003/00
<b><u>SOUTH (MIAMI)</u></b>														
Alabama	938	890	697	804	15.4	-9.7	-14.3	1,622	1,763	1,415	1,635	15.5	-7.3	0.8
Arkansas	324	269	270	271	0.4	0.7	-16.4	604	552	554	661	19.3	19.7	9.4
Florida	10,067	10,367	10,154	9,313	-8.3	-10.2	-7.5	23,690	24,128	23,561	23,153	-1.7	-4.0	-2.3
Georgia	3,362	3,899	3,488	3,065	-12.1	-21.4	-8.8	7,133	8,425	7,752	7,986	3.0	-5.2	12.0
Louisiana	350	419	308	331	7.5	-21.0	-5.4	875	990	982	973	-0.9	-1.7	11.2
Mississippi	344	275	306	293	-4.2	6.5	-14.8	543	517	567	559	-1.4	8.1	2.9
North Carolina	1,921	1,785	1,858	1,684	-9.4	-5.7	-12.3	3,823	4,078	3,974	4,217	6.1	3.4	10.3
Oklahoma	513	397	301	261	-13.3	-34.3	-49.1	857	780	661	667	0.9	-14.5	-22.2
Puerto Rico	151	151	147	122	-17.0	-19.2	-19.2	419	383	414	305	-26.3	-20.4	-27.2
South Carolina	759	749	614	640	4.2	-14.6	-15.7	1,517	1,741	1,456	1,675	15.0	-3.8	10.4
Tennessee	1,193	1,326	1,306	1,466	12.3	10.6	22.9	2,379	2,587	2,735	3,064	12.0	18.4	28.8
Texas	2,990	2,475	3,003	3,255	8.4	31.5	8.9	5,779	5,000	6,219	6,188	-0.5	23.8	7.1
Total	22,912	23,002	22,452	21,505	-4.2	-6.5	-6.1	49,241	50,944	50,290	51,083	1.6	0.3	3.7
<b><u>WEST (LOS ANGELES)</u></b>														
Alaska	37	54	31	30	-3.2	-44.4	-18.9	106	105	88	115	30.7	9.5	8.5
Arizona	385	929	412	450	9.2	-51.6	16.9	860	1,773	1,043	965	-7.5	-45.6	12.2
California	2,504	3,323	3,290	2,634	-19.9	-20.7	5.2	6,705	7,963	7,473	7,057	-5.6	-11.4	5.2
Colorado	994	1,123	921	756	-17.9	-32.7	-23.9	1,886	2,220	2,096	1,705	-18.7	-23.2	-9.6
Hawaii	33	24	13	44	238.5	83.3	33.3	51	47	34	73	114.7	55.3	43.1
Idaho	167	138	102	128	25.5	-7.2	-23.4	372	470	292	405	38.7	-13.8	8.9
Montana	83	113	118	94	-20.3	-16.8	13.3	198	251	255	271	6.3	8.0	36.9
Nevada	148	185	198	236	19.2	27.6	59.5	401	404	420	536	27.6	32.7	33.7
New Mexico	86	127	109	102	-6.4	-19.7	18.6	245	333	214	209	-2.3	-37.2	-14.7
Oregon	295	273	282	312	10.6	14.3	5.8	608	601	603	621	3.0	3.3	2.1
Utah	88	86	93	160	72.0	86.0	81.8	295	274	313	447	42.8	63.1	51.5
Washington	436	512	364	430	18.1	-16.0	-1.4	1,142	1,218	988	1,024	3.6	-15.9	-10.3
Wyoming	56	57	37	73	97.3	28.1	30.4	112	113	84	133	58.3	17.7	18.8
Total	5,312	6,944	5,970	5,449	-8.7	-21.5	2.6	12,981	15,772	13,903	13,561	-2.5	-14.0	4.5
<b>TOTAL U.S.A.</b>	<b>100,419</b>	<b>107,486</b>	<b>98,939</b>	<b>96,532</b>	<b>-2.4</b>	<b>-10.2</b>	<b>-3.9</b>	<b>236,586</b>	<b>254,942</b>	<b>233,082</b>	<b>244,083</b>	<b>4.7</b>	<b>-4.3</b>	<b>3.2</b>

TABLE 2

## TOTAL STOPOVER ARRIVALS BY PERMANENT RESIDENCE

	<u>MARCH</u>			<u>% Change</u>				<u>JANUARY - MARCH</u>			<u>% Change</u>			
	<u>2000</u>	<u>2001</u>	<u>2002</u>	<u>2003</u>	<u>2003/02</u>	<u>2003/01</u>	<u>2003/00</u>	<u>2000</u>	<u>2001</u>	<u>2002</u>	<u>2003</u>	<u>2003/02</u>	<u>2003/01</u>	<u>2003/00</u>
<b><u>CANADA (TORONTO)</u></b>														
Alberta	508	508	351	395	12.5	-22.2	-22.2	1,445	1,748	1,274	1,524	19.6	-12.8	5.5
British Columbia	366	367	250	245	-2.0	-33.2	-33.1	1,059	1,196	873	917	5.0	-23.3	-13.4
Manitoba	614	520	156	479	207.1	-7.9	-22.0	1,573	1,691	768	1,864	142.7	10.2	18.5
New Brunswick	337	286	198	214	8.1	-25.2	-36.5	637	654	424	462	9.0	-29.4	-27.5
Newfoundland	76	45	64	53	-17.2	17.8	-30.3	145	131	189	187	-1.1	42.7	29.0
Nova Scotia	433	561	160	284	77.5	-49.4	-34.4	910	1,081	511	676	32.3	-37.5	-25.7
Ontario	9,223	9,788	8,407	7,288	-13.3	-25.5	-21.0	25,578	28,653	24,194	22,617	-6.5	-21.1	-11.6
P.E. Island	33	50	40	64	60.0	28.0	93.9	59	82	70	90	28.6	9.8	52.5
Quebec	1,362	2,273	1,854	1,631	-12.0	-28.2	19.8	4,501	6,283	4,978	4,785	-3.9	-23.8	6.3
Saskatchewan	93	132	64	109	70.3	-17.4	17.2	482	696	370	678	83.2	-2.6	40.7
Other Canada	40	55	29	17	-41.4	-69.1	-57.5	94	164	111	74	-33.3	-54.9	-21.3
<b>Total</b>	<b>13,085</b>	<b>14,585</b>	<b>11,573</b>	<b>10,779</b>	<b>-6.9</b>	<b>-26.1</b>	<b>-17.6</b>	<b>36,483</b>	<b>42,379</b>	<b>33,762</b>	<b>33,874</b>	<b>0.3</b>	<b>-20.1</b>	<b>-7.2</b>
<b><u>LONDON OFFICE</u></b>														
<b><u>Northern Europe</u></b>														
U.K.	11,057	10,066	10,257	11,334	10.5	12.6	2.5	31,530	28,934	28,208	31,523	11.8	8.9	-0.0
Denmark	71	64	36	30	-16.7	-53.1	-57.7	484	230	157	117	-25.5	-49.1	-75.8
Finland	41	32	40	48	20.0	50.0	17.1	124	120	121	216	78.5	80.0	74.2
Norway	85	58	93	59	-36.6	1.7	-30.6	299	244	244	273	11.9	11.9	-8.7
Sweden	114	131	118	84	-28.8	-35.9	-26.3	441	519	385	280	-27.3	-46.1	-36.5
<b><u>Southern Europe</u></b>														
Greece	205	26	16	14	-12.5	-46.2	-93.2	271	71	55	105	90.9	47.9	-61.3
Italy	1,814	1,472	1,145	2,539	121.7	72.5	40.0	5,254	4,493	3,539	8,295	134.4	84.6	57.9
Portugal	56	31	26	34	30.8	9.7	-39.3	103	64	52	118	126.9	84.4	14.6
Spain	90	131	116	127	9.5	-3.1	41.1	254	414	347	326	-6.1	-21.3	28.3
<b><u>Western Europe</u></b>														
Austria	256	253	150	144	-4.0	-43.1	-43.8	991	808	570	617	8.2	-23.6	-37.7
Belgium	105	136	119	112	-5.9	-17.6	6.7	298	292	302	296	-2.0	1.4	-0.7
France	534	284	210	210	0.0	-26.1	-60.7	1,491	805	714	719	0.7	-10.7	-51.8
Germany	2,382	2,293	1,293	1,612	24.7	-29.7	-32.3	8,316	6,248	3,808	4,733	24.3	-24.2	-43.1
Luxemburg	11	7	10	4	-60.0	-42.9	-63.6	25	24	15	18	20.0	-25.0	-28.0
Netherlands	347	198	148	248	67.6	25.3	-28.5	1,083	623	471	804	70.7	29.1	-25.8
Switzerland	308	168	184	169	-8.2	0.6	-45.1	1,064	698	470	561	19.4	-19.6	-47.3
<b><u>Central/East Europe</u></b>														
Czechoslovakia	23	33	22	53	140.9	60.6	130.4	68	119	82	142	73.2	19.3	108.8
Hungary	15	15	9	7	-22.2	-53.3	-53.3	96	67	73	51	-30.1	-23.9	-46.9
Poland	118	60	38	69	81.6	15.0	-41.5	260	151	151	262	73.5	73.5	0.8
Russia	59	91	166	72	-56.6	-20.9	22.0	270	320	386	353	-8.5	10.3	30.7
Other Europe	104	88	101	119	17.8	35.2	14.4	299	301	248	377	52.0	25.2	26.1
<b>Total</b>	<b>17,795</b>	<b>15,637</b>	<b>14,297</b>	<b>17,088</b>	<b>19.5</b>	<b>9.3</b>	<b>-4.0</b>	<b>53,021</b>	<b>45,545</b>	<b>40,398</b>	<b>50,186</b>	<b>24.2</b>	<b>10.2</b>	<b>-5.3</b>

TABLE 2

## TOTAL STOPOVER ARRIVALS BY PERMANENT RESIDENCE

	MARCH							JANUARY - MARCH						
	<u>2000</u>	<u>2001</u>	<u>2002</u>	<u>2003</u>	% C h a n g e			<u>2000</u>	<u>2001</u>	<u>2002</u>	<u>2003</u>	% C h a n g e		
					2003/02	2003/01	2003/00					2003/02	2003/01	2003/00
<b>LATIN AMERICA</b>														
<b>CENTRAL AMERICA</b>														
Mexico	152	214	189	186	-1.6	-13.1	22.4	510	559	413	401	-2.9	-28.3	-21.4
Belize	48	43	50	90	80.0	109.3	87.5	114	110	113	312	176.1	183.6	173.7
Costa Rica	30	43	42	38	-9.5	-11.6	26.7	140	166	190	135	-28.9	-18.7	-3.6
El Salvador	4	8	19	8	-57.9	0.0	100.0	19	31	59	26	-55.9	-16.1	36.8
Guatemala	20	21	51	51	0.0	142.9	155.0	67	76	93	83	-10.8	9.2	23.9
Honduras	5	10	8	16	100.0	60.0	220.0	37	30	33	44	33.3	46.7	18.9
Nicaragua	4	4	5	4	-20.0	0.0	0.0	20	13	22	10	-54.5	-23.1	-50.0
Panama	154	121	88	79	-10.2	-34.7	-48.7	412	346	248	272	9.7	-21.4	-34.0
Total	417	464	452	472	4.4	1.7	13.2	1,319	1,331	1,171	1,283	9.6	-3.6	-2.7
<b>SOUTH AMERICA</b>														
Argentina	107	144	35	46	31.4	-68.1	-57.0	453	462	137	162	18.2	-64.9	-64.2
Bolivia	1	1	7	5	-28.6	400.0	400.0	16	21	16	19	18.8	-9.5	18.8
Brazil	129	54	92	67	-27.2	24.1	-48.1	293	236	244	202	-17.2	-14.4	-31.1
Chile	41	52	23	24	4.3	-53.8	-41.5	269	214	156	111	-28.8	-48.1	-58.7
Colombia	122	168	43	28	-34.9	-83.3	-77.0	405	393	151	245	62.3	-37.7	-39.5
Ecuador	19	31	9	2	-77.8	-93.5	-89.5	34	59	40	8	-80.0	-86.4	-76.5
Guyana	126	115	84	132	57.1	14.8	4.8	366	357	270	390	44.4	9.2	6.6
Paraguay	4	1	3	0	-100.0	-100.0	-100.0	10	7	7	5	-28.6	-28.6	-50.0
Peru	18	31	35	21	-40.0	-32.3	16.7	65	69	75	71	-5.3	2.9	9.2
Surinam	21	44	18	26	44.4	-40.9	23.8	47	105	33	67	103.0	-36.2	42.6
Uruguay	8	24	7	8	14.3	-66.7	0.0	30	29	23	16	-30.4	-44.8	-46.7
Venezuela	84	215	79	61	-22.8	-71.6	-27.4	213	397	224	176	-21.4	-55.7	-17.4
Other South America	0	0	0	0	-	-	-	1	0	0	1	-	-	0.0
Total	680	880	435	420	-3.4	-52.3	-38.2	2,202	2,349	1,376	1,473	7.0	-37.3	-33.1
Total Latin America	1,097	1,344	887	892	0.6	-33.6	-18.7	3,521	3,680	2,547	2,756	8.2	-25.1	-21.7

TABLE 2

## TOTAL STOPOVER ARRIVALS BY PERMANENT RESIDENCE

	MARCH							JANUARY - MARCH						
	2000	2001	2002	2003	% Change			2000	2001	2002	2003	% Change		
					2003/02	2003/01	2003/00					2003/02	2003/01	2003/00
<b>CARIBBEAN</b>														
Antigua	131	81	116	98	-15.5	21.0	-25.2	361	254	291	287	-1.4	13.0	-20.5
Bahamas	453	493	396	198	-50.0	-59.8	-56.3	1,293	1,263	853	557	-34.7	-55.9	-56.9
Barbados	437	323	383	484	26.4	49.8	10.8	1,010	906	1,032	1,111	7.7	22.6	10.0
Bermuda	219	137	179	277	54.7	102.2	26.5	440	345	392	560	42.9	62.3	27.3
British Virgin Is.	21	27	41	28	-31.7	3.7	33.3	68	90	80	90	12.5	0.0	32.4
Cayman Is.	1,023	869	968	798	-17.6	-8.2	-22.0	2,289	2,419	2,166	2,368	9.3	-2.1	3.5
Dominica	42	32	21	25	19.0	-21.9	-40.5	76	99	46	71	54.3	-28.3	-6.6
Grenada	65	36	42	40	-4.8	11.1	-38.5	150	106	120	122	1.7	15.1	-18.7
Monsterrat	13	5	6	7	16.7	40.0	-46.2	28	22	14	20	42.9	-9.1	-28.6
St. Kitts/Nevis/Anguilla	95	41	43	47	9.3	14.6	-50.5	179	116	109	143	31.2	23.3	-20.1
St. Lucia	149	73	96	143	49.0	95.9	-4.0	355	238	253	402	58.9	68.9	13.2
St. Vincent	50	29	16	34	112.5	17.2	-32.0	110	99	107	105	-1.9	6.1	-4.5
Turks & Caicos Is.	26	26	78	37	-52.6	42.3	42.3	69	134	152	159	4.6	18.7	130.4
Trinidad & Tobago	488	520	679	522	-23.1	0.4	7.0	1,308	1,529	1,484	1,496	0.8	-2.2	14.4
<b>Comm. Caribbean</b>	<b>3,212</b>	<b>2,692</b>	<b>3,064</b>	<b>2,738</b>	<b>-10.6</b>	<b>1.7</b>	<b>-14.8</b>	<b>7,736</b>	<b>7,620</b>	<b>7,099</b>	<b>7,491</b>	<b>5.5</b>	<b>-1.7</b>	<b>-3.2</b>
Aruba	11	16	45	45	0.0	181.3	309.1	46	51	77	107	39.0	109.8	132.6
Cuba	84	68	78	41	-47.4	-39.7	-51.2	364	171	173	161	-6.9	-5.8	-55.8
Curacao	50	32	71	99	39.4	209.4	98.0	109	97	154	245	59.1	152.6	124.8
Dominican Republic	79	54	101	60	-40.6	11.1	-24.1	226	181	205	157	-23.4	-13.3	-30.5
Guadeloupe	5	7	3	12	300.0	71.4	140.0	18	15	19	17	-10.5	13.3	-5.6
Haiti	49	33	70	86	22.9	160.6	75.5	110	97	151	210	39.1	116.5	90.9
St. Maarten	45	56	34	51	50.0	-8.9	13.3	91	99	79	102	29.1	3.0	12.1
All other Caribbean	50	55	30	65	116.7	18.2	30.0	104	109	84	122	45.2	11.9	17.3
<b>Other Caribbean</b>	<b>373</b>	<b>321</b>	<b>432</b>	<b>459</b>	<b>6.3</b>	<b>43.0</b>	<b>23.1</b>	<b>1,068</b>	<b>820</b>	<b>942</b>	<b>1,121</b>	<b>19.0</b>	<b>36.7</b>	<b>5.0</b>
<b>TOTAL CARIBBEAN</b>	<b>3,585</b>	<b>3,013</b>	<b>3,496</b>	<b>3,197</b>	<b>-8.6</b>	<b>6.1</b>	<b>-10.8</b>	<b>8,804</b>	<b>8,440</b>	<b>8,041</b>	<b>8,612</b>	<b>7.1</b>	<b>2.0</b>	<b>-2.2</b>
<b>OTHER COUNTRIES</b>														
African Countries	155	95	45	59	31.1	-37.9	-61.9	333	251	166	166	0.0	-33.9	-50.2
Isreal	59	96	38	56	47.4	-41.7	-5.1	189	279	170	172	1.2	-38.4	-9.0
Saudi Arabia	6	2	1	3	200.0	50.0	-50.0	11	12	2	6	-	-50.0	-45.5
Turkey	99	36	7	15	114.3	-58.3	-84.8	140	75	37	45	21.6	-40.0	-67.9
Other Middle East	22	34	25	26	4.0	-23.5	18.2	55	87	52	50	-3.8	-42.5	-9.1
India & Pakistan	67	90	65	51	-21.5	-43.3	-23.9	166	188	130	102	-21.5	-45.7	-38.6
Japan	676	541	460	360	-21.7	-33.5	-46.7	1,948	1,679	1,090	1,046	-4.0	-37.7	-46.3
China	41	53	87	64	-26.4	20.8	56.1	147	118	136	189	39.0	60.2	28.6
Taiwan	5	5	5	7	-	40.0	40.0	16	21	12	24	100.0	14.3	50.0
Korea	23	32	37	10	-73.0	-68.8	-56.5	65	78	62	53	-14.5	-32.1	-18.5
Philippines	73	60	64	152	137.5	153.3	108.2	237	142	136	404	197.1	184.5	70.5
Singapore	9	8	9	13	44.4	62.5	44.4	13	38	12	28	133.3	-26.3	115.4
Other Asia	45	38	25	38	52.0	0.0	-15.6	87	100	44	65	47.7	-35.0	-25.3
Australia	120	94	107	127	18.7	35.1	5.8	336	369	339	346	2.1	-6.2	3.0
New Zealand	15	24	22	16	-27.3	-33.3	6.7	57	63	74	39	-47.3	-38.1	-31.6
All Other Ctries	12	9	11	0	-100.0	-100.0	-100.0	16	17	15	3	-80.0	-82.4	-81.3
<b>Total</b>	<b>1,427</b>	<b>1,217</b>	<b>1,008</b>	<b>997</b>	<b>-1.1</b>	<b>-18.1</b>	<b>-30.1</b>	<b>3,816</b>	<b>3,517</b>	<b>2,477</b>	<b>2,738</b>	<b>10.5</b>	<b>-22.1</b>	<b>-28.2</b>
<b>GRAND TOTAL</b>	<b>137,408</b>	<b>143,282</b>	<b>130,200</b>	<b>129,485</b>	<b>-0.5</b>	<b>-9.6</b>	<b>-5.8</b>	<b>342,231</b>	<b>358,503</b>	<b>320,307</b>	<b>342,249</b>	<b>6.9</b>	<b>-4.5</b>	<b>0.0</b>

# STOPOVER VISITORS BY MARKET SHARE

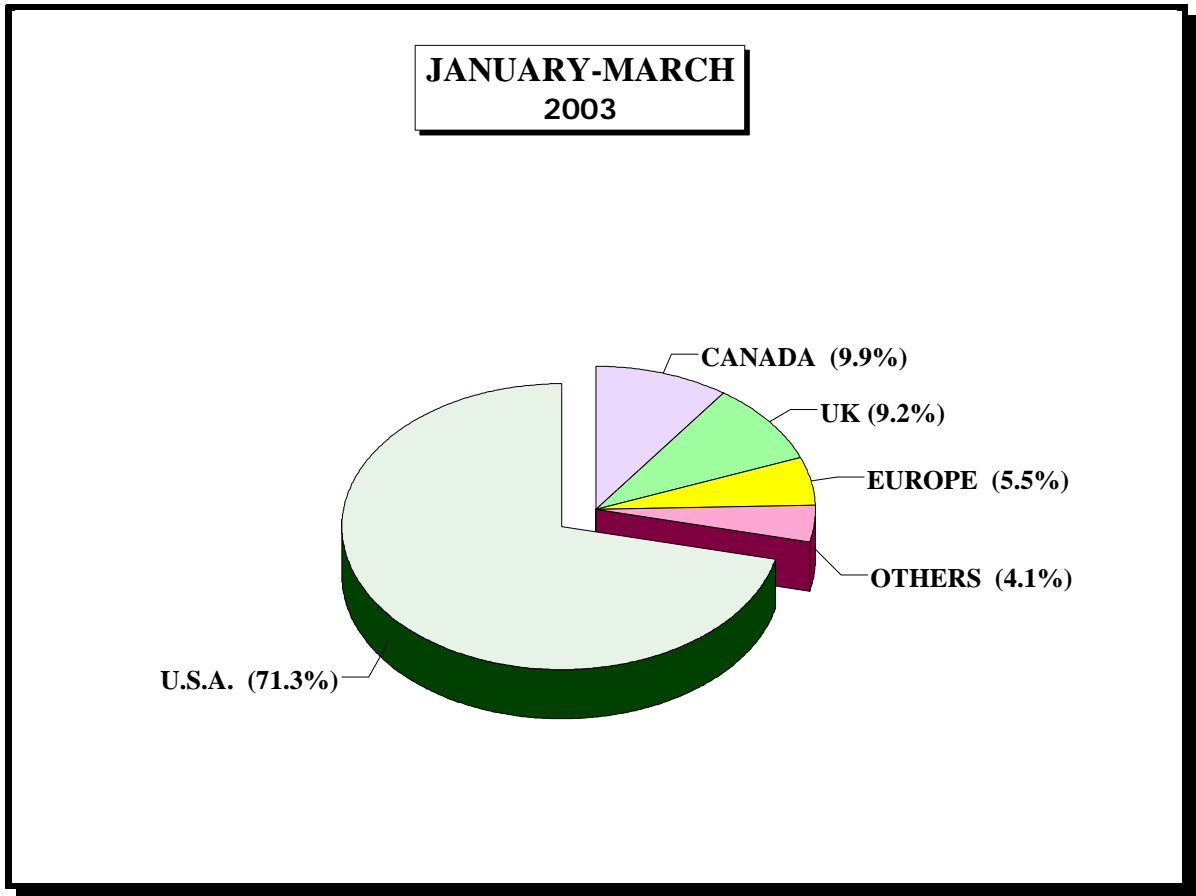


Fig. 2

Country	March 2003	% Share	Jan. - Mar. 2003	% Share	Jan. - Mar. 2002	% Share	%Change 2003/02
U.S.A	96,532	74.6%	244,083	71.3%	233,082	72.8%	4.7%
CANADA	10,779	8.3%	33,874	9.9%	33,762	10.5%	0.3%
U.K.	11,334	8.8%	31,523	9.2%	28,208	8.8%	11.8%
EUROPE	5,754	4.4%	18,663	5.5%	12,190	3.8%	53.1%
OTHERS	5,086	3.9%	14,106	4.1%	13,065	4.1%	8.0%
<b>Total</b>	<b>129,485</b>	<b>100.0%</b>	<b>342,249</b>	<b>100.0%</b>	<b>320,307</b>	<b>100.0%</b>	<b>6.9%</b>

**TABLE 3**

<b><u>AVERAGE LENGTH OF STAY (Nights)</u></b>					
<b><u>FOREIGN NATIONALS</u></b>					
	<b>All Types of Accommodation</b>			<b>Hotel</b>	
	2002	2003		2002	2003
<b>January</b>	10.4	10.1		6.7	6.6
<b>February</b>	9.0	8.8		6.5	6.3
<b>March</b>	8.4	8.5		6.2	6.1
<b>Jan. - Mar.</b>	9.1	9.1		6.4	6.3

**Note: LENGTH OF STAY IS BASED ON INTENDED LENGTH OF STAY**

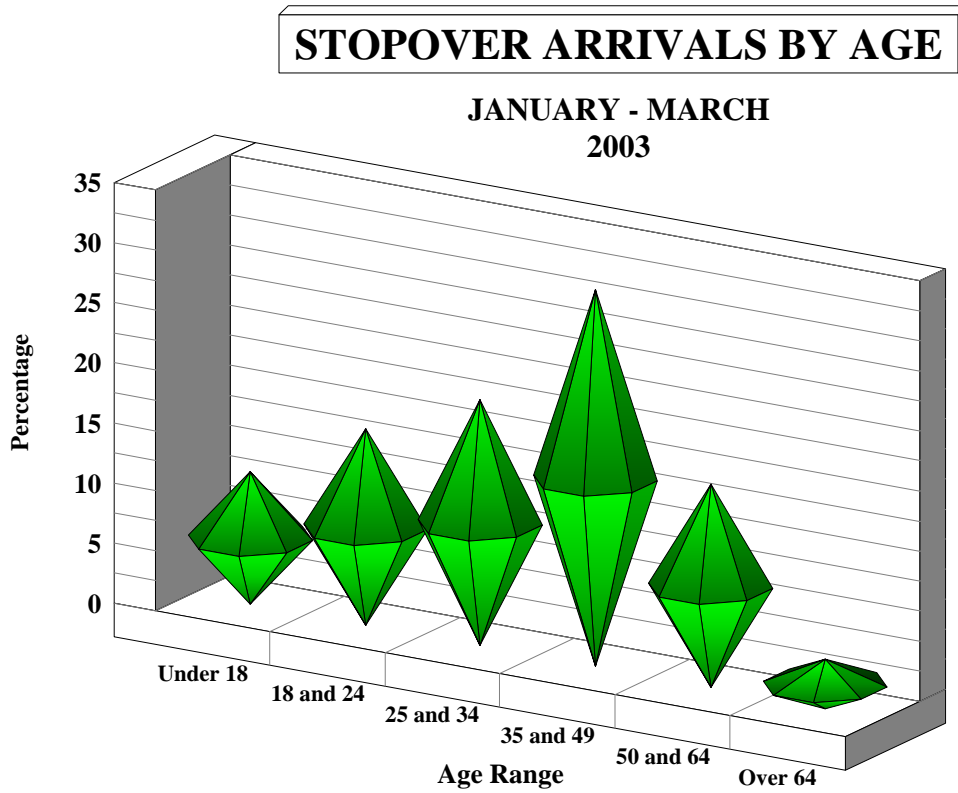


Fig. 3

#### AGE DISTRIBUTION OF STOPOVER ARRIVALS

Age	MARCH		JAN.-MAR.		JAN.-MAR.		%Change 2003/02
	2003	% Share	2003	% Share	2002	% Share	
Under 18	14,172	10.9	32,854	9.6	33,874	10.6	-3.0%
18 and 24	21,063	16.3	34,160	10.0	32,611	10.2	4.7%
25 and 34	26,479	20.4	69,265	20.2	66,147	20.7	4.7%
35 and 49	40,620	31.4	118,734	34.7	110,683	34.6	7.3%
50 and 64	21,870	16.9	69,358	20.3	60,876	19.0	13.9%
Over 64	5,281	4.1	17,878	5.2	16,116	5.0	10.9%
<b>Total</b>	<b>129,485</b>	<b>100.0</b>	<b>342,249</b>	<b>100.0</b>	<b>320,307</b>	<b>100.0</b>	<b>6.9%</b>

**TABLE 4****CRUISE PASSENGER ARRIVALS BY MONTH AND PORT OF CALL  
JANUARY - MARCH 2003**

	MONTEGO BAY		% Change 2003/02		OCHO RIOS		% Change 2003/02		2003 TOTAL		2002 TOTAL		% Change 2003/02	
	CALLS	PAX	CALLS	PAX	CALLS	PAX	CALLS	PAX	CALLS	PAX	CALLS	PAX	CALLS	PAX
January	25	43,827	56.3%	74.4%	35	75,007	16.7%	13.2%	60	118,834	46	91,399	30.4%	30.0%
February	24	39,006	71.4%	121.0%	35	77,390	20.7%	30.8%	60	116,451	43	76,799	39.5%	51.6%
March	27	38,558	92.9%	100.8%	41	89,932	57.7%	49.2%	69	128,758	41	79,547	68.3%	61.9%
Jan. - Mar.	<b>76</b>	<b>121,391</b>	<b>72.7%</b>	<b>95.8%</b>	<b>111</b>	<b>242,329</b>	<b>30.6%</b>	<b>30.5%</b>	<b>189</b>	<b>364,043</b>	<b>130</b>	<b>247,745</b>	<b>45.4%</b>	<b>46.9%</b>

- \* Note:
1. During the month of January three Cruise Ship calls with 3,174 Cruise passengers visited two ports.
  2. During the month of February 2 Cruise Ship calls with 2,798 Cruise passengers visited two ports.
  3. Included in the total Cruise passengers for the month of February, 1 call with 55 passengers visited Port Antonio.
  4. During the month of March 3 Cruise Ship calls with 2,679 Cruise passengers visited two ports.
  5. Included in the total Cruise passengers for the month of March, 1 call with 268 passengers visited Kingston.

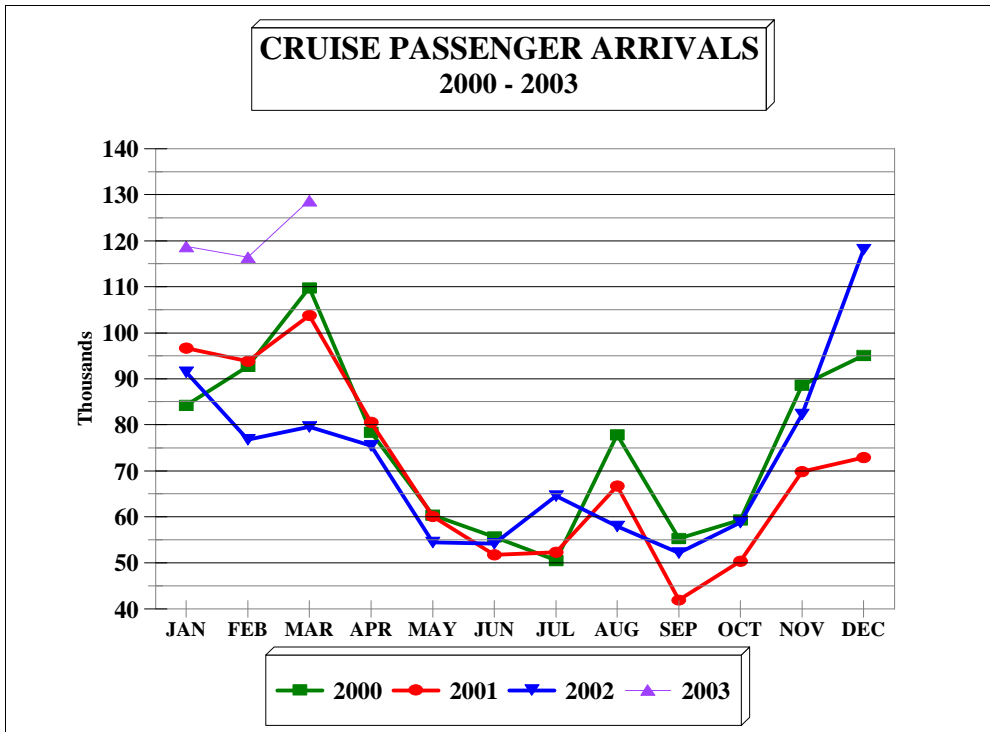


FIG. 4

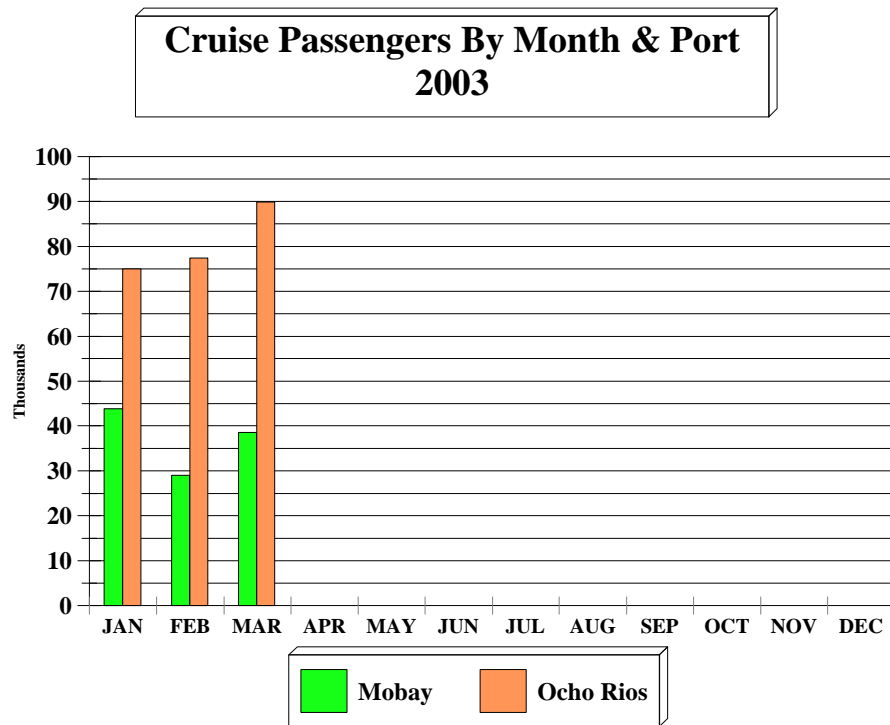


FIG. 4a

**TABLE 5A**  
**LANDED TOURISTS BY SCHEDULED & CHARTERED AIRLINES**

	<b>MARCH 2003</b>			<b>JANUARY - MARCH 2003</b>		
	<b>SCHEDULED AIRLINES</b>	<b>CHARTERED AIRLINES</b>	<b>TOTAL STOPOVERS</b>	<b>SCHEDULED AIRLINES</b>	<b>CHARTERED AIRLINES</b>	<b>TOTAL STOPOVERS</b>
<b>U.S.A.</b>						
<b><u>NORTHEAST (NEW YORK)</u></b>						
Connecticut	2,522	178	2,700	6,161	268	6,429
Delaware	488	5	493	1,271	11	1,282
Maine	343	15	358	868	17	885
Maryland	2,699	183	2,882	7,802	198	8,000
Massachusetts	3,526	428	3,954	9,326	443	9,769
New Hampshire	575	72	647	1,488	78	1,566
New Jersey	5,688	298	5,986	14,482	344	14,826
New York	12,616	745	13,361	35,958	1,261	37,219
Pennsylvania	5,646	423	6,069	14,773	469	15,242
Rhode Island	458	57	515	1,100	57	1,157
Vermont	193	16	209	556	21	577
Virginia	2,025	295	2,320	4,809	332	5,141
Washington D.C.	511	22	533	1,209	24	1,233
West Virginia	222	13	235	421	18	439
<b>Total</b>	<b>37,512</b>	<b>2,750</b>	<b>40,262</b>	<b>100,224</b>	<b>3,541</b>	<b>103,765</b>
<b><u>MIDWEST (CHICAGO)</u></b>						
Illinois	4,099	2,785	6,884	9,310	7,637	16,947
Indiana	1,365	686	2,051	2,900	1,509	4,409
Iowa	734	389	1,123	2,434	1,177	3,611
Kansas	411	123	534	1,067	174	1,241
Kentucky	412	170	582	1,071	339	1,410
Michigan	2,170	2,180	4,350	5,776	4,873	10,649
Minnesota	1,843	2,259	4,102	5,440	5,318	10,758
Missouri	618	1,414	2,032	1,646	3,811	5,457
Nebraska	403	27	430	1,406	80	1,486
North Dakota	122	77	199	377	188	565
Ohio	1,729	685	2,414	4,351	1,193	5,544
South Dakota	158	154	312	571	305	876
Wisconsin	1,424	2,879	4,303	3,890	8,831	12,721
<b>Total</b>	<b>15,488</b>	<b>13,828</b>	<b>29,316</b>	<b>40,239</b>	<b>35,435</b>	<b>75,674</b>

**TABLE 5A**  
**LANDED TOURISTS BY SCHEDULED & CHARTERED AIRLINES**

	<b>MARCH 2003</b>			<b>JANUARY - MARCH 2003</b>		
	<b>SCHEDULED AIRLINES</b>	<b>CHARTERED AIRLINES</b>	<b>TOTAL STOPOVERS</b>	<b>SCHEDULED AIRLINES</b>	<b>CHARTERED AIRLINES</b>	<b>TOTAL STOPOVERS</b>
<b><u>SOUTH (MIAMI)</u></b>						
Alabama	774	30	804	1,570	65	1,635
Arkansas	229	42	271	586	75	661
Florida	9,234	79	9,313	23,030	123	23,153
Georgia	2,982	83	3,065	7,834	152	7,986
Louisiana	330	1	331	966	7	973
Mississippi	286	7	293	543	16	559
North Carolina	1,446	238	1,684	3,919	298	4,217
Oklahoma	229	32	261	622	45	667
Puerto Rico	122	0	122	304	1	305
South Carolina	601	39	640	1,587	88	1,675
Tennessee	1,362	104	1,466	2,914	150	3,064
Texas	3,219	36	3,255	6,120	68	6,188
Total	20,814	691	21,505	49,995	1,088	51,083
<b><u>WEST (LOS ANGELES)</u></b>						
Alaska	28	2	30	111	4	115
Arizona	439	11	450	943	22	965
California	2,564	70	2,634	6,899	158	7,057
Colorado	687	69	756	1,605	100	1,705
Hawaii	39	5	44	66	7	73
Idaho	128	0	128	403	2	405
Montana	92	2	94	266	5	271
Nevada	232	4	236	524	12	536
New Mexico	98	4	102	203	6	209
Oregon	303	9	312	606	15	621
Utah	148	12	160	428	19	447
Washington	408	22	430	994	30	1,024
Wyoming	69	4	73	128	5	133
Total	5,235	214	5,449	13,176	385	13,561
<b>TOTAL U.S.A.</b>	<b>79,049</b>	<b>17,483</b>	<b>96,532</b>	<b>203,634</b>	<b>40,449</b>	<b>244,083</b>

**TABLE 5A**  
**LANDED TOURISTS BY SCHEDULED & CHARTERED AIRLINES**

	<b>MARCH 2003</b>			<b>JANUARY - MARCH 2003</b>		
	<b>SCHEDULED AIRLINES</b>	<b>CHARTERED AIRLINES</b>	<b>TOTAL STOPOVERS</b>	<b>SCHEDULED AIRLINES</b>	<b>CHARTERED AIRLINES</b>	<b>TOTAL STOPOVERS</b>
<b><u>CANADA (TORONTO)</u></b>						
Alberta	381	14	395	1,407	117	1,524
British Columbia	233	12	245	867	50	917
Manitoba	400	79	479	1,046	818	1,864
New Brunswick	208	6	214	441	21	462
Newfoundland	45	8	53	169	18	187
Nova Scotia	281	3	284	660	16	676
Ontario	4,447	2,841	7,288	13,107	9,510	22,617
P.E. Island	64	0	64	90	0	90
Quebec	1,010	621	1,631	2,913	1,872	4,785
Saskatchewan	102	7	109	502	176	678
Other Canada	9	8	17	53	21	74
Total	<b>7,180</b>	<b>3,599</b>	<b>10,779</b>	<b>21,255</b>	<b>12,619</b>	<b>33,874</b>
<b><u>LONDON OFFICE</u></b>						
<b><u>Northern Europe</u></b>						
U.K.	7,924	3,410	11,334	21,248	10,275	31,523
Denmark	30	0	30	113	4	117
Finland	48	0	48	209	7	216
Norway	58	1	59	264	9	273
Sweden	82	2	84	266	14	280
<b><u>Southern Europe</u></b>						
Greece	14	0	14	97	8	105
Italy	845	1,694	2,539	3,246	5,049	8,295
Portugal	34	0	34	116	2	118
Spain	118	9	127	303	23	326
<b><u>Western Europe</u></b>						
Austria	144	0	144	478	139	617
Belgium	110	2	112	239	57	296
France	204	6	210	704	15	719
Germany	1,610	2	1,612	4,466	267	4,733
Luxemburg	4	0	4	17	1	18
Netherlands	246	2	248	481	323	804
Switzerland	164	5	169	500	61	561
<b><u>Central/East Europe</u></b>						
Czechoslovakia	53	0	53	136	6	142
Hungary	7	0	7	46	5	51
Poland	69	0	69	243	19	262
Russia	70	2	72	346	7	353
Other Europe	118	1	119	348	29	377
Total	<b>11,952</b>	<b>5,136</b>	<b>17,088</b>	<b>33,866</b>	<b>16,320</b>	<b>50,186</b>

**TABLE 5A**  
**LANDED TOURISTS BY SCHEDULED & CHARTERED AIRLINES**

	<b>MARCH 2003</b>			<b>JANUARY - MARCH 2003</b>		
	<b>SCHEDULED AIRLINES</b>	<b>CHARTERED AIRLINES</b>	<b>TOTAL STOPOVERS</b>	<b>SCHEDULED AIRLINES</b>	<b>CHARTERED AIRLINES</b>	<b>TOTAL STOPOVERS</b>
<b><u>OTHER COUNTRIES</u></b>						
<b><u>CENTRAL AMERICA</u></b>						
Mexico	183	3	186	397	4	401
Belize	90	0	90	312	0	312
Costa Rica	38	0	38	135	0	135
El Salvador	8	0	8	26	0	26
Guatemala	51	0	51	83	0	83
Honduras	16	0	16	44	0	44
Nicaragua	4	0	4	10	0	10
Panama	79	0	79	272	0	272
Total	469	3	472	1,279	4	1,283
<b><u>SOUTH AMERICA</u></b>						
Argentina	46	0	46	162	0	162
Bolivia	5	0	5	19	0	19
Brazil	66	1	67	201	1	202
Chile	24	0	24	111	0	111
Colombia	28	0	28	113	132	245
Ecuador	2	0	2	8	0	8
Guyana	132	0	132	390	0	390
Paraguay	0	0	0	5	0	5
Peru	21	0	21	71	0	71
Surinam	26	0	26	67	0	67
Uruguay	8	0	8	16	0	16
Venezuela	61	0	61	173	3	176
Other South America	0	0	0	1	0	1
Total	419	1	420	1,337	136	1,473
Total Latin America	888	4	892	2,616	140	2,756

**TABLE 5A**  
**LANDED TOURISTS BY SCHEDULED & CHARTERED AIRLINES**

	<b>MARCH 2003</b>			<b>JANUARY - MARCH 2003</b>		
	<b>SCHEDULED AIRLINES</b>	<b>CHARTERED AIRLINES</b>	<b>TOTAL STOPOVERS</b>	<b>SCHEDULED AIRLINES</b>	<b>CHARTERED AIRLINES</b>	<b>TOTAL STOPOVERS</b>
<b><u>CARIBBEAN</u></b>						
Antigua	98	0	98	286	1	287
Bahamas	198	0	198	551	6	557
Barbados	484	0	484	1,111	0	1,111
Bermuda	121	156	277	403	157	560
British Virgin Is.	28	0	28	90	0	90
Cayman Is.	797	1	798	2,367	1	2,368
Dominica	25	0	25	71	0	71
Grenada	40	0	40	122	0	122
Monsterrat	7	0	7	19	1	20
St. Kitts/Nevis/Anguilla	47	0	47	143	0	143
St. Lucia	143	0	143	402	0	402
St. Vincent	34	0	34	105	0	105
Turks & Caicos Is.	37	0	37	159	0	159
Trinidad & Tobago	522	0	522	1,495	1	1,496
<b>Comm. Caribbean</b>	<b>2,581</b>	<b>157</b>	<b>2,738</b>	<b>7,324</b>	<b>167</b>	<b>7,491</b>
Aruba	45	0	45	107	0	107
Cuba	41	0	41	161	0	161
Curacao	99	0	99	245	0	245
Dominican Republic	60	0	60	157	0	157
Guadelope	12	0	12	17	0	17
Haiti	86	0	86	210	0	210
St. Maarten	51	0	51	102	0	102
All other Caribbean	65	0	65	122	0	122
<b>Other Caribbean</b>	<b>459</b>	<b>0</b>	<b>459</b>	<b>1,121</b>	<b>0</b>	<b>1,121</b>
<b>TOTAL CARIBBEAN</b>	<b>3,040</b>	<b>157</b>	<b>3,197</b>	<b>8,445</b>	<b>167</b>	<b>8,612</b>
<b><u>OTHER COUNTRIES</u></b>						
African Countries	54	5	59	157	9	166
Isreal	51	5	56	167	5	172
Saudi Arabia	3	0	3	6	0	6
Turkey	12	3	15	35	10	45
Other Middle East	26	1	27	50	1	51
India & Pakistan	44	6	50	87	14	101
Japan	360	0	360	1,040	6	1,046
China	64	0	64	151	38	189
Taiwan	7	0	7	24	0	24
Korea	10	0	10	52	1	53
Philippines	151	1	152	403	1	404
Singapore	12	1	13	27	1	28
Other Asia	37	1	38	63	2	65
Australia	125	2	127	343	3	346
New Zealand	16	0	16	39	0	39
All Other Ctries	0	0	0	3	0	3
<b>Total</b>	<b>972</b>	<b>25</b>	<b>997</b>	<b>2,647</b>	<b>91</b>	<b>2,738</b>
<b>GRAND TOTAL</b>	<b>103,081</b>	<b>26,404</b>	<b>129,485</b>	<b>272,463</b>	<b>69,786</b>	<b>342,249</b>

## Stopover Arrivals

### By Intended Resort Area of Stay

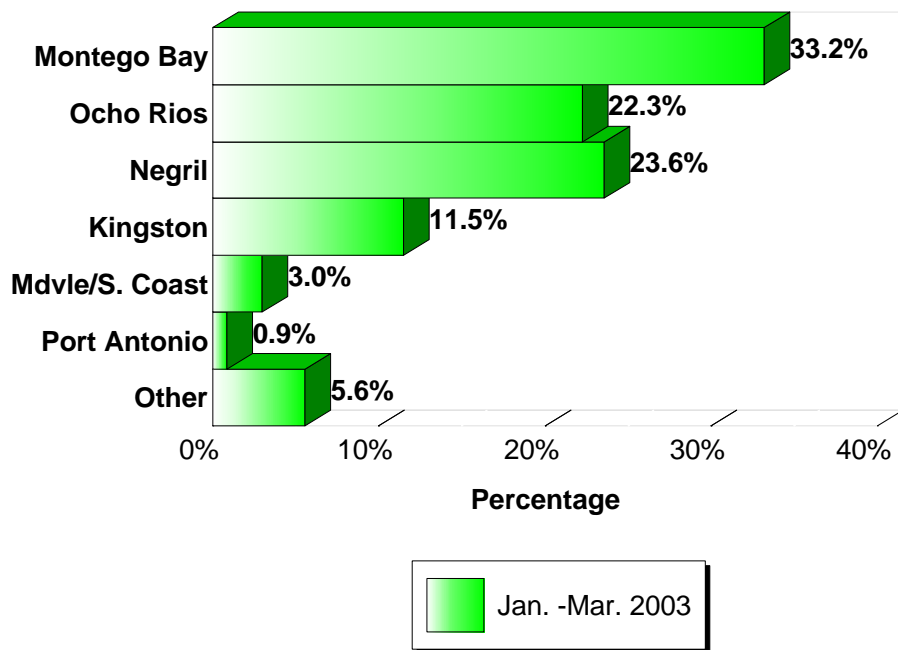


Fig. 5

### STOPOVER ARRIVALS BY INTENDED AREA OF STAY

Area	MARCH		JAN.-MAR.		JAN.-MAR.		%Change 2003/02
	2003	%Share	2002	%Share	2002	%Share	
Montego Bay	42,623	32.9%	113,676	33.2%	105,763	33.0%	7.5%
Ocho Rios	29,260	22.6%	76,180	22.3%	67,271	21.0%	13.2%
Negril	32,735	25.3%	80,635	23.6%	77,277	24.1%	4.3%
Kingston	13,639	10.5%	39,409	11.5%	38,490	12.0%	2.4%
Mdvle/S. Coast	3,540	2.7%	10,248	3.0%	10,122	3.2%	1.2%
Port Antonio	983	0.8%	3,024	0.9%	3,191	1.0%	-5.2%
Other	6,705	5.2%	19,077	5.6%	18,193	5.7%	4.9%
<b>Total</b>	<b>129,485</b>	<b>100.0%</b>	<b>342,249</b>	<b>100.0%</b>	<b>320,307</b>	<b>100.0%</b>	<b>6.9%</b>