

# MONTHLY STATISTICAL REPORT

Volume X111, Issue V1

June 2003

## TOURIST (Stopovers)

Stopover arrivals in June 2003 were **122,071**, an increase of **7%** over the **113,705** recorded for June 2002. Cumulatively, stopovers for the January to June period increased by **7%**. There was a total of **678,315** stopovers for the period compared to **634,015** in 2002.

### United States

Stopover arrivals from the United States market increased by **5%** in June with a total of **94,662** visitors compared to the **90,125** visitors who came in June 2002. All marketing regions recorded increases. The Northeast increased by **7%**, the South by less than **1%**, the Midwest by **12%** and the West by **5%**.

For the January to June period the US market increased by **5%**. Total visitors from this market for the period was **493,960** compared to **471,623** for the corresponding period in 2002. The Northeast increased by **6%**, the Midwest by **10%** and the South remained flat. The West, however, declined by under **1%**.

### Canada

In June, the Canadian market declined by **7%** with a total of **4,917** stopovers compared to **5,280** stopovers who came in June 2002. The leading province Ontario declined by **6%**, and the second most important visitor-producing province Quebec also declined by **31%**. The provinces of Nova Scotia, Saskatchewan, Alberta and British Columbia recorded increases though from

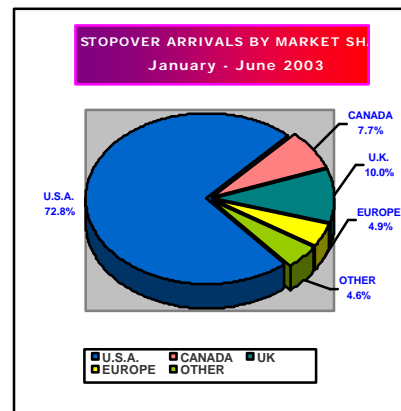
relatively small bases. Cumulatively, the Canadian market declined by **3%** in the January to June period with a total of **52,004** stopovers compared to **53,414** in 2002.

dom and Germany recorded increases. The United Kingdom with a total of **67,931** stopovers recorded an increase of **21%** while Germany with **8,048** visitors recorded an increase of **19%**.

## Latin America

The Latin American market declined by **27%** in June with a total of **871** stopovers compared to **1,196** in June 2002. While Mexico increased by **1%**, the other four leading countries recorded declines. Brazil declined by **(21%)**, Argentina **(24%)**, Chile **(22%)**, and Colombia **(90%)**.

For the January to June period, the Latin American market declined by **6%** with a total of **5,636** visitors compared to **5,977** for the corresponding period in 2002.



## Europe

The European market continued to show remarkable improvement when it recorded a **30%** increase in June 2003. The market provided a total of **17,017** stopover visitors compared to the **13,051** recorded in June 2002 and was also up against the **13,774** stopovers who came in June 2001. The United Kingdom and Germany increased by **29%** and **6%** respectively. All the main European country markets recorded increases. Belgium, Austria, Switzerland, Spain and Italy recorded increases despite from relatively small bases.

Cumulatively, for the January to June period, the European market increased by **27%**. Total stopovers for the period was **101,008** compared to **79,516** in 2002. Both the United King-

The European market continued to improve with a **30% increase in June 2003**. Both the United Kingdom and Germany reflected increases of **29% and 6% respectively, in June 2003**.

## The Caribbean

Visitors to Jamaica from the Caribbean region increased by **15%** in June. A total of **3,676** visitors from other Caribbean countries visited Jamaica, up from **3,210** in June 2002. Arrivals were up by **8%** against June 2000.

The major Caribbean countries which provided visitors to Jamaica in June were: the Cayman Islands (**858**), Trinidad and Tobago (**705**), Barbados (**498**), the Bahamas (**285**), Antigua (**161**), Bermuda (**143**), and St. Lucia (**186**). While Barbados, Bermuda, St. Lucia and Trinidad and Tobago recorded increases in June, all the other major Caribbean countries recorded declines against June 2002.

Cumulatively, the Caribbean stopover arrivals to Jamaica in the January to June period increased by **9%** moving from **18,169** in 2002 to **19,844** in 2003. In the period under review, the top Caribbean countries that provided stopover visitors to Jamaica were the Cayman Islands with **5,593**, Trinidad and Tobago with **3,522**, Barbados with **2,447** and the Bahamas with **1,340**.

## Japan

The Japanese market declined by **27%** in June with a total of **269** stopovers compared to **368** in June 2002 but was down by **50%** against the **539** for the corresponding period in 2001.

For the January to June period, Japan declined by **18%** with **1,876** visitors compared to **2,282** in 2002.

## Other Countries

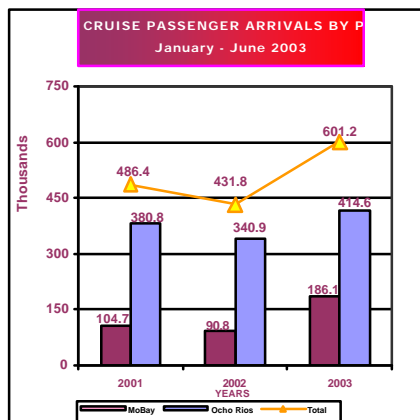
Of the other countries, Australia with a total of **1,269** stopovers in January to June period recorded an increase of **93%** against the **657** who came in January to June 2002.

## Market Share

The market share of stopover visitors for the January to June period were as follows:

USA **72.8%**; Canada **7.7%**; UK **10.0%**; Continental Europe **4.9%** the Caribbean **2.9%**; Latin America **0.8%**; Japan **.3%** and Other Countries **0.6%**.

## Cruise Passengers



A total of **64,812** cruise passengers visited Jamaica in June 2003. This represents a **20%** increase over the **54,125** recorded for June 2002. Cumulatively, a total of **601,214** cruise passengers visited Jamaica in the January to June period, a **39%** increase over the **431,765** recorded for the corresponding period in 2002.

A total of **50,403** cruise passengers visited the port of Ocho Rios in June, an increase of **14%** over the **44,200** recorded for June 2002. For the January to June period cruise passenger arrivals to the port of Ocho Rios was **414,583** an increase of **22%** over the **340,932** for the corresponding period in 2002.

Montego Bay recorded a total of **14,214** cruise passengers for the month of June 2003, an increase of some **43%** over the **9,925** recorded for June 2002. Cumulatively, for the January to June period, cruise passenger arrivals to Montego Bay was **186,113** an increase of **105%** over the **90,761** recorded for the same period in 2002.

## Length of Stay

The average length of stay of stopovers in June was **10.5** nights compared to **10.6** nights for June 2002. The average length of stay in hotels was **6.2** nights compared to the **6.1** nights in June 2002. Cumulatively, the average length of stay for the January to June period was **9.1** nights compared to **9.4** nights recorded for the similar period in 2002.

## First and Repeat Visitors

Approximately **57%** or **65,139** of the **114,081** foreign nationals who visited Jamaica in June were first-time visitors and the other **43%** or **48,942** were repeat guests.

Cumulatively, in the January to June period, some **56%** of the **640,945** Foreign Nationals who visited the island were first-time guests and **44%** were repeat guests.

**TABLE 1**  
**TOURIST ARRIVALS**  
January - June  
2003

Month	<----- Stopovers ----->						Total		
	Foreign Nationals	+/- 2003/02	+/- 2003/01	Non-Resident Jamaicans	+/- 2003/02	+/- 2003/01	Stopover Arrivals	+/- 2003/02	+/- 2003/01
January	95,875	12.6%	-0.9%	5,431	9.0%	5.2%	101,306	12.4%	-0.6%
February	106,440	11.7%	-1.0%	5,018	6.0%	-14.3%	111,458	11.4%	-1.7%
March	124,143	0.4%	-8.9%	5,342	-18.1%	-23.1%	129,485	-0.5%	-9.6%
April	104,597	11.0%	-10.9%	7,377	14.6%	-10.3%	111,974	11.2%	-10.9%
<b>Jan.-Apr.</b>	<b>431,055</b>	<b>8.2%</b>	<b>-5.9%</b>	<b>23,168</b>	<b>2.2%</b>	<b>-11.5%</b>	<b>454,223</b>	<b>7.9%</b>	<b>-6.2%</b>
May	95,809	3.4%	-2.3%	6,212	-7.1%	-7.7%	102,021	2.7%	-2.6%
June	114,081	7.6%	2.7%	7,990	4.2%	-12.0%	122,071	7.4%	1.6%
<b>May.-June</b>	<b>209,890</b>	<b>5.7%</b>	<b>0.4%</b>	<b>14,202</b>	<b>-1.1%</b>	<b>-10.2%</b>	<b>224,092</b>	<b>5.2%</b>	<b>-0.3%</b>
<b>Jan.-June</b>	<b>640,945</b>	<b>7.4%</b>	<b>-3.9%</b>	<b>37,370</b>	<b>0.9%</b>	<b>-11.0%</b>	<b>678,315</b>	<b>7.0%</b>	<b>-4.3%</b>

## STOPOVER ARRIVALS FOREIGN NATIONALS

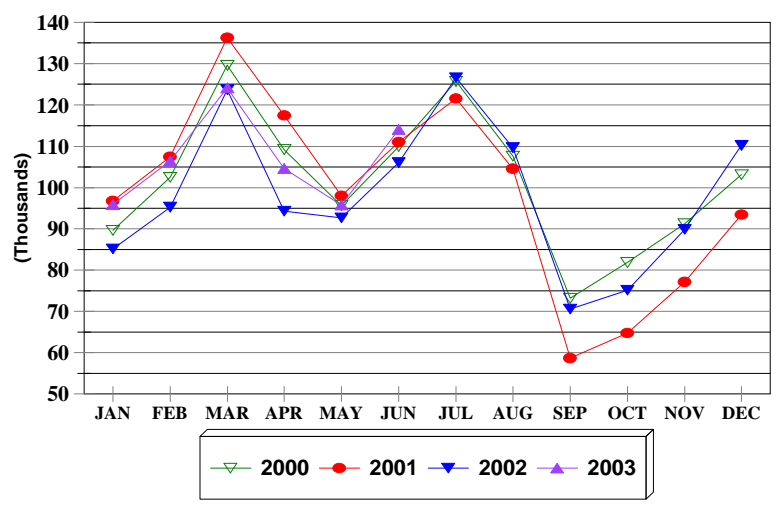


FIG. 1

## STOPOVER ARRIVALS NON-RESIDENT JAMAICANS

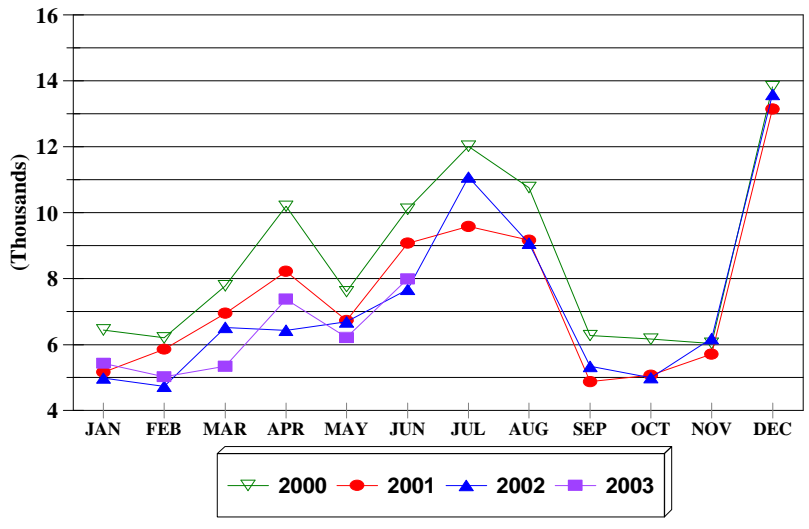


FIG. 1a

**TABLE 1.1****First & Repeat Visit to Jamaica**

FOREIGN NATIONALS

2003

	Arrivals				TOTAL	% SHARE	
	First Visit	+/-	Repeat Visit	+/-		First Visit	Repeat Visit
Jan.	51,389	18.9	44,486	6.2	95,875	53.6	46.4
Feb.	56,644	12.2	49,796	11.1	106,440	53.2	46.8
Mar.	74,063	2.2	50,080	-2.3	124,143	59.7	40.3
Apr.	57,325	17.3	47,272	4.1	104,597	54.8	45.2
<b>Jan.-Apr.</b>	<b>239,421</b>	<b>11.4</b>	<b>191,634</b>	<b>4.5</b>	<b>431,055</b>	<b>55.5</b>	<b>44.5</b>
May	54,403	11.0	41,406	-5.0	95,809	56.8	43.2
Jun.	65,139	5.4	48,942	10.7	114,081	57.1	42.9
<b>May-Jun.</b>	<b>119,542</b>	<b>7.8</b>	<b>90,348</b>	<b>2.9</b>	<b>209,890</b>	<b>57.0</b>	<b>43.0</b>
<b>Jan.-Jun.</b>	<b>358,963</b>	<b>10.2</b>	<b>281,982</b>	<b>4.0</b>	<b>640,945</b>	<b>56.0</b>	<b>44.0</b>

**TABLE 1.2**

**STOPOVER ARRIVALS BY MARKET REGION  
AND MONTH OF ARRIVAL 2003**

	U.S.A.				Canada	U.K. Europe	Latin America	Caribbean	Asia	Other Countries	Total
	Northeast	Mid-West	South	West							
<b>January</b>	28,497	21,351	14,638	4,110	11,589	16,286	1,087	2,821	635	292	101,306
<b>February</b>	35,006	25,007	14,940	4,002	11,506	16,812	777	2,594	578	236	111,458
<b>March</b>	40,262	29,316	21,505	5,449	10,779	17,088	892	3,197	695	302	129,485
<b>April</b>	37,597	17,405	19,687	5,514	7,937	17,523	1,041	4,324	532	414	111,974
<b>Jan.-Apr.</b>	<b>141,362</b>	<b>93,079</b>	<b>70,770</b>	<b>19,075</b>	<b>41,811</b>	<b>67,709</b>	<b>3,797</b>	<b>12,936</b>	<b>2,440</b>	<b>1,244</b>	<b>454,223</b>
<b>May</b>	30,120	14,016	25,523	5,353	5,276	16,282	968	3,232	449	802	102,021
<b>June</b>	34,991	16,810	35,215	7,646	4,917	17,017	871	3,676	522	406	122,071
<b>May - Jun.</b>	<b>65,111</b>	<b>30,826</b>	<b>60,738</b>	<b>12,999</b>	<b>10,193</b>	<b>33,299</b>	<b>1,839</b>	<b>6,908</b>	<b>971</b>	<b>1,208</b>	<b>224,092</b>
<b>Jan. - Jun.</b>	<b>206,473</b>	<b>123,905</b>	<b>131,508</b>	<b>32,074</b>	<b>52,004</b>	<b>101,008</b>	<b>5,636</b>	<b>19,844</b>	<b>3,411</b>	<b>2,452</b>	<b>678,315</b>
<b>+/- %</b>	<b>5.8%</b>	<b>9.8%</b>	<b>-0.0%</b>	<b>-0.2%</b>	<b>-2.6%</b>	<b>27.0%</b>	<b>-5.7%</b>	<b>9.2%</b>	<b>-1.1%</b>	<b>31.3%</b>	<b>7.0%</b>

TABLE 2

## TOTAL STOPOVER ARRIVALS BY PERMANENT RESIDENCE

	JUNE							JANUARY - JUNE						
	2000	2001	2002	2003	% Change			2000	2001	2002	2003	% Change		
					2003/02	2003/01	2003/00					2003/02	2003/01	2003/00
<b>U.S.A.</b>														
<b><u>NORTHEAST (NEW YORK)</u></b>														
Connecticut	1,827	1,965	1,802	1,929	7.0	-1.8	5.6	11,731	13,094	11,376	12,002	5.5	-8.3	2.3
Delaware	501	589	500	332	-33.6	-43.6	-33.7	2,779	3,188	2,452	2,510	2.4	-21.3	-9.7
Maine	120	125	109	162	48.6	29.6	35.0	1,556	1,841	1,504	1,504	0.0	-18.3	-3.3
Maryland	3,323	3,719	3,538	3,770	6.6	1.4	13.5	15,962	18,135	16,694	17,713	6.1	-2.3	11.0
Massachusetts	1,769	2,140	1,774	2,107	18.8	-1.5	19.1	16,466	20,175	16,186	16,600	2.6	-17.7	0.8
New Hampshire	228	268	173	253	46.2	-5.6	11.0	2,618	3,391	2,548	2,614	2.6	-22.9	-0.2
New Jersey	4,730	5,351	4,378	5,048	15.3	-5.7	6.7	27,678	31,333	27,179	30,235	11.2	-3.5	9.2
New York	13,599	13,146	12,309	13,215	7.4	0.5	-2.8	81,241	85,310	74,054	77,407	4.5	-9.3	-4.7
Pennsylvania	4,870	5,301	5,193	5,187	-0.1	-2.2	6.5	25,607	29,231	26,962	28,801	6.8	-1.5	12.5
Rhode Island	147	213	228	223	-2.2	4.7	51.7	1,718	1,979	1,727	1,939	12.3	-2.0	12.9
Vermont	51	85	72	76	5.6	-10.6	49.0	1,048	1,278	854	974	14.1	-23.8	-7.1
Virginia	2,026	2,056	1,981	2,003	1.1	-2.6	-1.1	10,748	11,457	10,307	10,746	4.3	-6.2	-0.0
Washington D.C.	471	517	449	524	16.7	1.4	11.3	2,469	2,831	2,423	2,568	6.0	-9.3	4.0
West Virginia	269	296	152	162	6.6	-45.3	-39.8	1,015	1,214	855	860	0.6	-29.2	-15.3
<b>Total</b>	<b>33,931</b>	<b>35,771</b>	<b>32,658</b>	<b>34,991</b>	<b>7.1</b>	<b>-2.2</b>	<b>3.1</b>	<b>202,636</b>	<b>224,457</b>	<b>195,121</b>	<b>206,473</b>	<b>5.8</b>	<b>-8.0</b>	<b>1.9</b>
<b><u>MIDWEST (CHICAGO)</u></b>														
Illinois	5,240	4,536	4,447	4,319	-2.9	-4.8	-17.6	32,056	30,389	27,616	29,256	5.9	-3.7	-8.7
Indiana	1,323	1,203	1,035	1,497	44.6	24.4	13.2	8,107	7,453	6,964	7,976	14.5	7.0	-1.6
Iowa	504	346	425	502	18.1	45.1	-0.4	3,984	4,483	4,401	4,887	11.0	9.0	22.7
Kansas	493	520	524	545	4.0	4.8	10.5	2,807	2,968	2,251	2,336	3.8	-21.3	-16.8
Kentucky	625	523	678	806	18.9	54.1	29.0	2,891	3,001	3,158	3,253	3.0	8.4	12.5
Michigan	1,922	1,591	1,475	2,091	41.8	31.4	8.8	18,042	19,269	15,039	18,052	20.0	-6.3	0.1
Minnesota	716	610	672	753	12.1	23.4	5.2	14,146	13,763	12,196	14,105	15.7	2.5	-0.3
Missouri	2,558	1,846	2,379	2,489	4.6	34.8	-2.7	10,251	10,212	9,723	11,266	15.9	10.3	9.9
Nebraska	306	348	353	429	21.5	23.3	40.2	2,071	2,693	2,144	2,462	14.8	-8.6	18.9
North Dakota	68	36	102	63	-38.2	75.0	-7.4	720	706	711	762	7.2	7.9	5.8
Ohio	1,858	1,791	1,756	2,160	23.0	20.6	16.3	11,823	11,599	11,337	10,843	-4.4	-6.5	-8.3
South Dakota	68	47	88	83	-5.7	76.6	22.1	752	804	729	1,147	57.3	42.7	52.5
Wisconsin	1,193	1,244	1,131	1,073	-5.1	-13.7	-10.1	18,924	19,030	16,571	17,560	6.0	-7.7	-7.2
<b>Total</b>	<b>16,874</b>	<b>14,641</b>	<b>15,065</b>	<b>16,810</b>	<b>11.6</b>	<b>14.8</b>	<b>-0.4</b>	<b>126,574</b>	<b>126,370</b>	<b>112,840</b>	<b>123,905</b>	<b>9.8</b>	<b>-2.0</b>	<b>-2.1</b>

TABLE 2

## TOTAL STOPOVER ARRIVALS BY PERMANENT RESIDENCE

	JUNE							JANUARY - JUNE						
	2000	2001	2002	2003	% Change			2000	2001	2002	2003	% Change		
					2003/02	2003/01	2003/00					2003/02	2003/01	2003/00
<b><u>SOUTH (MIAMI)</u></b>														
Alabama	1,028	945	1,043	1,033	-1.0	9.3	0.5	4,006	3,871	3,625	4,034	11.3	4.2	0.7
Arkansas	438	471	361	456	26.3	-3.2	4.1	1,540	1,421	1,342	1,598	19.1	12.5	3.8
Florida	13,382	14,222	13,125	14,005	6.7	-1.5	4.7	58,999	60,602	57,165	57,787	1.1	-4.6	-2.1
Georgia	5,180	5,635	6,153	5,509	-10.5	-2.2	6.4	20,011	21,956	22,738	21,770	-4.3	-0.8	8.8
Louisiana	1,401	1,339	1,280	1,347	5.2	0.6	-3.9	3,425	3,528	3,496	3,509	0.4	-0.5	2.5
Mississippi	648	530	553	394	-28.8	-25.7	-39.2	1,861	1,661	1,719	1,519	-11.6	-8.5	-18.4
North Carolina	2,251	2,521	2,247	2,325	3.5	-7.8	3.3	9,158	9,911	8,964	9,505	6.0	-4.1	3.8
Oklahoma	734	717	783	779	-0.5	8.6	6.1	2,307	2,158	2,044	2,142	4.8	-0.7	-7.2
Puerto Rico	105	157	137	108	-21.2	-31.2	2.9	833	802	865	605	-30.1	-24.6	-27.4
South Carolina	1,059	1,069	979	1,131	15.5	5.8	6.8	3,905	4,467	4,009	4,357	8.7	-2.5	11.6
Tennessee	1,685	1,399	1,644	1,584	-3.6	13.2	-6.0	6,252	5,943	6,420	6,638	3.4	11.7	6.2
Texas	7,408	6,685	6,777	6,544	-3.4	-2.1	-11.7	19,370	16,689	19,126	18,044	-5.7	8.1	-6.8
Total	35,319	35,690	35,082	35,215	0.4	-1.3	-0.3	131,667	133,009	131,513	131,508	-0.0	-1.1	-0.1
<b><u>WEST (LOS ANGELES)</u></b>														
Alaska	27	25	7	28	300.0	12.0	3.7	178	196	132	185	40.2	-5.6	3.9
Arizona	844	994	599	596	-0.5	-40.0	-29.4	2,510	4,062	2,452	2,342	-4.5	-42.3	-6.7
California	5,371	4,956	4,791	4,899	2.3	-1.2	-8.8	19,976	20,773	18,854	18,506	-1.8	-10.9	-7.4
Colorado	746	717	766	754	-1.6	5.2	1.1	3,988	4,164	4,060	3,587	-11.7	-13.9	-10.1
Hawaii	17	38	21	20	-4.8	-47.4	17.6	107	134	89	119	33.7	-11.2	11.2
Idaho	101	93	88	86	-2.3	-7.5	-14.9	653	742	553	638	15.4	-14.0	-2.3
Montana	48	32	51	54	5.9	68.8	12.5	314	401	395	530	34.2	32.2	68.8
Nevada	247	222	212	282	33.0	27.0	14.2	1,040	1,005	944	1,237	31.0	23.1	18.9
New Mexico	149	133	100	122	22.0	-8.3	-18.1	592	698	519	482	-7.1	-30.9	-18.6
Oregon	303	218	169	190	12.4	-12.8	-37.3	1,368	1,321	1,180	1,160	-1.7	-12.2	-15.2
Utah	121	117	121	174	43.8	48.7	43.8	644	585	665	882	32.6	50.8	37.0
Washington	430	362	355	398	12.1	9.9	-7.4	2,449	2,418	2,092	2,172	3.8	-10.2	-11.3
Wyoming	38	24	40	43	7.5	79.2	13.2	223	228	214	234	9.3	2.6	4.9
Total	8,442	7,931	7,320	7,646	4.5	-3.6	-9.4	34,042	36,727	32,149	32,074	-0.2	-12.7	-5.8
<b>TOTAL U.S.A.</b>	<b>94,566</b>	<b>94,033</b>	<b>90,125</b>	<b>94,662</b>	<b>5.0</b>	<b>0.7</b>	<b>0.1</b>	<b>494,919</b>	<b>520,563</b>	<b>471,623</b>	<b>493,960</b>	<b>4.7</b>	<b>-5.1</b>	<b>-0.2</b>

TABLE 2

## TOTAL STOPOVER ARRIVALS BY PERMANENT RESIDENCE

	<u>JUNE</u>							<u>JANUARY - JUNE</u>						
	<u>2000</u>	<u>2001</u>	<u>2002</u>	<u>2003</u>	<u>% Change</u>			<u>2000</u>	<u>2001</u>	<u>2002</u>	<u>2003</u>	<u>% Change</u>		
					2003/02	2003/01	2003/00					2003/02	2003/01	2003/00
<b><u>CANADA (TORONTO)</u></b>														
Alberta	209	242	148	164	10.8	-32.2	-21.5	2,488	2,715	2,112	2,262	7.1	-16.7	-9.1
British Columbia	191	177	143	161	12.6	-9.0	-15.7	1,843	1,854	1,470	1,530	4.1	-17.5	-17.0
Manitoba	66	78	70	39	-44.3	-50.0	-40.9	1,873	2,026	1,055	2,032	92.6	0.3	8.5
New Brunswick	42	39	13	13	0.0	-66.7	-69.0	994	991	666	636	-4.5	-35.8	-36.0
Newfoundland	47	35	44	30	-31.8	-14.3	-36.2	369	347	351	340	-3.1	-2.0	-7.9
Nova Scotia	59	68	37	54	45.9	-20.6	-8.5	1,560	1,680	821	1,122	36.7	-33.2	-28.1
Ontario	4,255	5,185	4,350	4,102	-5.7	-20.9	-3.6	41,635	46,502	39,439	36,844	-6.6	-20.8	-11.5
P.E. Island	3	1	3	1	-66.7	0.0	-66.7	102	102	97	120	23.7	17.6	17.6
Quebec	481	485	442	304	-31.2	-37.3	-36.8	6,537	8,629	6,752	6,165	-8.7	-28.6	-5.7
Saskatchewan	16	32	19	32	68.4	0.0	100.0	646	857	480	836	74.2	-2.5	29.4
Other Canada	23	21	11	17	54.5	-19.0	-26.1	179	240	171	117	-31.6	-51.2	-34.6
Total	5,392	6,363	5,280	4,917	-6.9	-22.7	-8.8	58,226	65,943	53,414	52,004	-2.6	-21.1	-10.7
<b><u>LONDON OFFICE</u></b>														
<b><u>Northern Europe</u></b>														
U.K.	11,396	10,395	9,978	12,894	29.2	24.0	13.1	64,371	59,675	56,117	67,931	21.1	13.8	5.5
Denmark	45	47	42	42	0.0	-10.6	-6.7	598	416	284	218	-23.2	-47.6	-63.5
Finland	24	19	10	11	10.0	-42.1	-54.2	201	203	224	281	25.4	38.4	39.8
Norway	81	70	58	107	84.5	52.9	32.1	500	449	506	481	-4.9	7.1	-3.8
Sweden	112	70	49	96	95.9	37.1	-14.3	783	751	598	546	-8.7	-27.3	-30.3
<b><u>Southern Europe</u></b>														
Greece	16	12	19	12	-36.8	0.0	-25.0	298	105	112	135	20.5	28.6	-54.7
Italy	621	570	480	730	52.1	28.1	17.6	7,814	6,638	5,622	12,443	121.3	87.5	59.2
Portugal	30	33	101	47	-53.5	42.4	56.7	190	145	505	242	-52.1	66.9	27.4
Spain	76	610	767	829	8.1	35.9	990.8	504	1,327	2,385	2,493	4.5	87.9	394.6
<b><u>Western Europe</u></b>														
Austria	105	88	98	136	38.8	54.5	29.5	1,426	1,215	873	1,037	18.8	-14.7	-27.3
Belgium	53	82	100	321	221.0	291.5	505.7	518	562	603	1,002	66.2	78.3	93.4
France	143	153	114	151	32.5	-1.3	5.6	2,183	1,458	1,392	1,353	-2.8	-7.2	-38.0
Germany	1,413	1,075	833	883	6.0	-17.9	-37.5	13,668	10,994	6,770	8,048	18.9	-26.8	-41.1
Luxemburg	5	2	6	5	-16.7	150.0	-	47	46	30	36	20.0	-21.7	-23.4
Netherlands	244	265	150	412	174.7	55.5	68.9	1,846	1,342	961	1,732	80.2	29.1	-6.2
Switzerland	135	115	128	163	27.3	41.7	20.7	1,869	1,285	889	1,112	25.1	-13.5	-40.5
<b><u>Central/East Europe</u></b>														
Czechoslovakia	4	22	11	10	-9.1	-54.5	150.0	91	179	135	187	38.5	4.5	105.5
Hungary	7	2	4	19	375.0	850.0	171.4	114	90	113	94	-16.8	4.4	-17.5
Poland	20	15	17	34	100.0	126.7	70.0	422	209	307	374	21.8	78.9	-11.4
Russia	36	55	29	49	69.0	-10.9	36.1	437	537	592	688	16.2	28.1	57.4
Other Europe	55	74	57	66	15.8	-10.8	20.0	470	474	498	575	15.5	21.3	22.3
Total	14,621	13,774	13,051	17,017	30.4	23.5	16.4	98,350	88,100	79,516	101,008	27.0	14.7	2.7

TABLE 2

## TOTAL STOPOVER ARRIVALS BY PERMANENT RESIDENCE

	JUNE							JANUARY - JUNE						
	2000	2001	2002	2003	% Change			2000	2001	2002	2003	% Change		
					2003/02	2003/01	2003/00					2003/02	2003/01	2003/00
<b>LATIN AMERICA</b>														
<b>CENTRAL AMERICA</b>														
Mexico	187	184	159	161	1.3	-12.5	-13.9	1,092	1,261	909	912	0.3	-27.7	-16.5
Belize	47	37	54	72	33.3	94.6	53.2	223	218	248	626	152.4	187.2	180.7
Costa Rica	24	53	61	42	-31.1	-20.8	75.0	262	319	352	259	-26.4	-18.8	-1.1
El Salvador	4	60	14	6	-57.1	-90.0	50.0	37	113	104	64	-38.5	-43.4	73.0
Guatemala	18	28	30	23	-23.3	-17.9	27.8	136	163	204	158	-22.5	-3.1	16.2
Honduras	14	2	12	17	41.7	750.0	21.4	76	94	81	84	3.7	-10.6	10.5
Nicaragua	1	5	10	8	-20.0	60.0	700.0	26	23	47	22	-53.2	-4.3	-15.4
Panama	62	138	95	89	-6.3	-35.5	43.5	688	704	513	519	1.2	-26.3	-24.6
Total	357	507	435	418	-3.9	-17.6	17.1	2,540	2,895	2,458	2,644	7.6	-8.7	4.1
<b>SOUTH AMERICA</b>														
Argentina	59	79	33	25	-24.2	-68.4	-57.6	645	786	252	359	42.5	-54.3	-44.3
Bolivia	2	3	3	6	100.0	100.0	200.0	26	32	26	33	26.9	3.1	26.9
Brazil	97	63	73	58	-20.5	-7.9	-40.2	537	499	458	375	-18.1	-24.8	-30.2
Chile	46	59	54	42	-22.2	-28.8	-8.7	416	370	378	215	-43.1	-41.9	-48.3
Colombia	125	187	237	23	-90.3	-87.7	-81.6	807	1,000	483	446	-7.7	-55.4	-44.7
Ecuador	24	24	18	16	-11.1	-33.3	-33.3	90	147	104	39	-62.5	-73.5	-56.7
Guyana	152	141	188	174	-7.4	23.4	14.5	821	783	759	840	10.7	7.3	2.3
Paraguay	0	4	3	4	33.3	0.0	-	13	11	12	11	-8.3	0.0	-15.4
Peru	10	44	42	26	-38.1	-40.9	160.0	134	185	206	172	-16.5	-7.0	28.4
Surinam	8	12	18	16	-11.1	33.3	100.0	92	151	92	137	48.9	-9.3	48.9
Uruguay	5	13	8	3	-62.5	-76.9	-40.0	56	61	40	29	-27.5	-52.5	-48.2
Venezuela	73	86	83	60	-27.7	-30.2	-17.8	563	728	700	332	-52.6	-54.4	-41.0
Other South America	0	2	1	0	-	-	-	3	4	9	4	-55.6	0.0	33.3
Total	601	717	761	453	-40.5	-36.8	-24.6	4,203	4,757	3,519	2,992	-15.0	-37.1	-28.8
Total Latin America	958	1,224	1,196	871	-27.2	-28.8	-9.1	6,743	7,652	5,977	5,636	-5.7	-26.3	-16.4

TABLE 2

## TOTAL STOPOVER ARRIVALS BY PERMANENT RESIDENCE

	JUNE							JANUARY - JUNE						
	2000	2001	2002	2003	% Change			2000	2001	2002	2003	% Change		
					2003/02	2003/01	2003/00					2003/02	2003/01	2003/00
<b>CARIBBEAN</b>														
Antigua	145	139	178	161	-9.6	15.8	11.0	774	665	710	738	3.9	11.0	-4.7
Bahamas	569	611	322	285	-11.5	-53.4	-49.9	3,012	3,070	1,810	1,340	-26.0	-56.4	-55.5
Barbados	322	386	372	498	33.9	29.0	54.7	2,337	1,987	2,163	2,447	13.1	23.2	4.7
Bermuda	102	75	101	143	41.6	90.7	40.2	837	696	830	1,045	25.9	50.1	24.9
British Virgin Is.	34	42	46	74	60.9	76.2	117.6	178	202	182	232	27.5	14.9	30.3
Cayman Is.	992	1,115	900	858	-4.7	-23.0	-13.5	5,212	5,872	5,068	5,593	10.4	-4.8	7.3
Dominica	76	29	32	45	40.6	55.2	-40.8	208	187	135	176	30.4	-5.9	-15.4
Grenada	59	34	40	66	65.0	94.1	11.9	309	252	245	295	20.4	17.1	-4.5
Monsterrat	6	6	5	13	160.0	116.7	116.7	54	49	27	54	100.0	10.2	0.0
St. Kitts/Nevis/Anguilla	68	63	54	78	44.4	23.8	14.7	350	298	279	345	23.7	15.8	-1.4
St. Lucia	194	131	119	186	56.3	42.0	-4.1	756	641	632	831	31.5	29.6	9.9
St. Vincent	45	45	49	74	51.0	64.4	64.4	215	231	262	256	-2.3	10.8	19.1
Turks & Caicos Is.	38	53	75	52	-30.7	-1.9	36.8	201	412	401	420	4.7	1.9	109.0
Trinidad & Tobago	439	500	497	705	41.9	41.0	60.6	2,795	3,291	3,221	3,522	9.3	7.0	26.0
<b>Comm. Caribbean</b>	<b>3,089</b>	<b>3,229</b>	<b>2,790</b>	<b>3,238</b>	<b>16.1</b>	<b>0.3</b>	<b>4.8</b>	<b>17,238</b>	<b>17,853</b>	<b>15,965</b>	<b>17,294</b>	<b>8.3</b>	<b>-3.1</b>	<b>0.3</b>
Aruba	17	20	19	33	73.7	65.0	94.1	118	106	134	226	68.7	113.2	91.5
Bonaire	0	0	0	0	-	-	-	0	0	0	16	-	-	-
Cuba	131	41	54	63	16.7	53.7	-51.9	739	325	310	316	1.9	-2.8	-57.2
Curacao	22	46	66	78	18.2	69.6	254.5	245	212	444	663	49.3	212.7	170.6
Dominican Republic	66	128	86	90	4.7	-29.7	36.4	405	463	481	397	-17.5	-14.3	-2.0
Guadelope	4	3	1	16	1500.0	433.3	300.0	26	31	39	49	25.6	58.1	88.5
Haiti	25	35	52	64	23.1	82.9	156.0	206	237	314	380	21.0	60.3	84.5
St. Maarten	35	45	78	58	-25.6	28.9	65.7	192	227	224	269	20.1	18.5	40.1
All other Caribbean	25	33	64	36	-43.8	9.1	44.0	199	230	258	234	-9.3	1.7	17.6
<b>Other Caribbean</b>	<b>325</b>	<b>351</b>	<b>420</b>	<b>438</b>	<b>4.3</b>	<b>24.8</b>	<b>34.8</b>	<b>2,130</b>	<b>1,831</b>	<b>2,204</b>	<b>2,550</b>	<b>15.7</b>	<b>39.3</b>	<b>19.7</b>
<b>TOTAL CARIBBEAN</b>	<b>3,414</b>	<b>3,580</b>	<b>3,210</b>	<b>3,676</b>	<b>14.5</b>	<b>2.7</b>	<b>7.7</b>	<b>19,368</b>	<b>19,684</b>	<b>18,169</b>	<b>19,844</b>	<b>9.2</b>	<b>0.8</b>	<b>2.5</b>
<b>OTHER COUNTRIES</b>														
African Countries	94	100	86	123	43.0	23.0	30.9	638	678	461	482	4.6	-28.9	-24.5
Isreal	77	94	50	67	34.0	-28.7	-13.0	399	494	330	364	10.3	-26.3	-8.8
Saudi Arabia	5	4	3	4	-	0.0	-20.0	17	18	8	14	75.0	-22.2	-17.6
Turkey	28	8	8	8	0.0	0.0	-71.4	189	106	64	69	7.8	-34.9	-63.5
Other Middle East	24	20	33	34	3.0	70.0	41.7	117	163	134	132	-1.5	-19.0	12.8
India & Pakistan	68	79	47	63	34.0	-20.3	-7.4	357	438	289	281	-2.8	-35.8	-21.3
Japan	608	539	368	269	-26.9	-50.1	-55.8	3,901	3,317	2,282	1,876	-17.8	-43.4	-51.9
China	55	48	26	37	42.3	-22.9	-32.7	265	261	241	268	11.2	2.7	1.1
Taiwan	4	6	8	7	-12.5	16.7	75.0	32	38	36	44	22.2	15.8	37.5
Korea	25	23	15	18	20.0	-21.7	-28.0	115	142	126	96	-23.8	-32.4	-16.5
Philippines	21	44	33	88	166.7	100.0	319.0	315	271	319	663	107.8	144.6	110.5
Singapore	5	8	11	13	18.2	62.5	160.0	24	70	44	57	29.5	-18.6	137.5
Other Asia	15	32	22	27	22.7	-15.6	80.0	135	197	112	129	15.2	-34.5	-4.4
Australia	91	107	91	149	63.7	39.3	63.7	753	739	657	1,269	93.2	71.7	68.5
New Zealand	15	20	37	21	-43.2	5.0	40.0	108	135	174	116	-33.3	-14.1	7.4
All Other Ctries	5	6	5	0	-100.0	-100.0	-100.0	36	33	39	3	-92.3	-90.9	-91.7
<b>Total</b>	<b>1,140</b>	<b>1,138</b>	<b>843</b>	<b>928</b>	<b>10.1</b>	<b>-18.5</b>	<b>-18.6</b>	<b>7,401</b>	<b>7,100</b>	<b>5,316</b>	<b>5,863</b>	<b>10.3</b>	<b>-17.4</b>	<b>-20.8</b>
<b>GRAND TOTAL</b>	<b>120,091</b>	<b>120,112</b>	<b>113,705</b>	<b>122,071</b>	<b>7.4</b>	<b>1.6</b>	<b>1.6</b>	<b>685,007</b>	<b>709,042</b>	<b>634,015</b>	<b>678,315</b>	<b>7.0</b>	<b>-4.3</b>	<b>-1.0</b>

# STOPOVER VISITORS BY MARKET SHARE

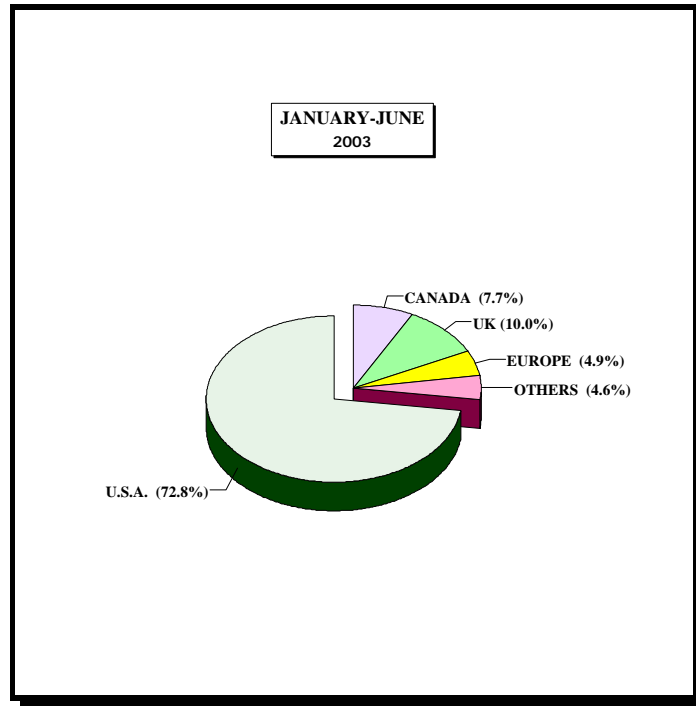


Fig. 2

Country	June 2003	% Share	Jan. - June 2003	% Share	Jan. - June 2002	% Share	%Change 2003/02
U.S.A	94,662	77.5%	493,960	72.8%	471,623	74.4%	4.7%
CANADA	4,917	4.0%	52,004	7.7%	53,414	8.4%	-2.6%
U.K.	12,894	10.6%	67,931	10.0%	56,117	8.9%	21.1%
EUROPE	4,123	3.4%	33,077	4.9%	23,399	3.7%	41.4%
OTHERS	5,475	4.5%	31,343	4.6%	29,462	4.6%	6.4%
<b>Total</b>	<b>122,071</b>	<b>100.0%</b>	<b>678,315</b>	<b>100.0%</b>	<b>634,015</b>	<b>100.0%</b>	<b>7.0%</b>

**TABLE 3**

<b><u>AVERAGE LENGTH OF STAY (Nights)</u></b>					
<b><u>FOREIGN NATIONALS</u></b>					
	<b>All Types of Accommodation</b>			<b>Hotel</b>	
	2002	2003		2002	2003
<b>January</b>	10.4	10.1		6.7	6.6
<b>February</b>	9.0	8.8		6.5	6.3
<b>March</b>	8.4	8.5		6.2	6.1
<b>April</b>	9.3	8.9		6.2	6.2
<b>May</b>	9.2	9.2		5.8	5.9
<b>June</b>	10.6	10.5		6.1	6.2
<b>Jan. - June</b>	9.4	9.1		6.2	6.2

**Note: LENGTH OF STAY IS BASED ON INTENDED LENGTH OF STAY**

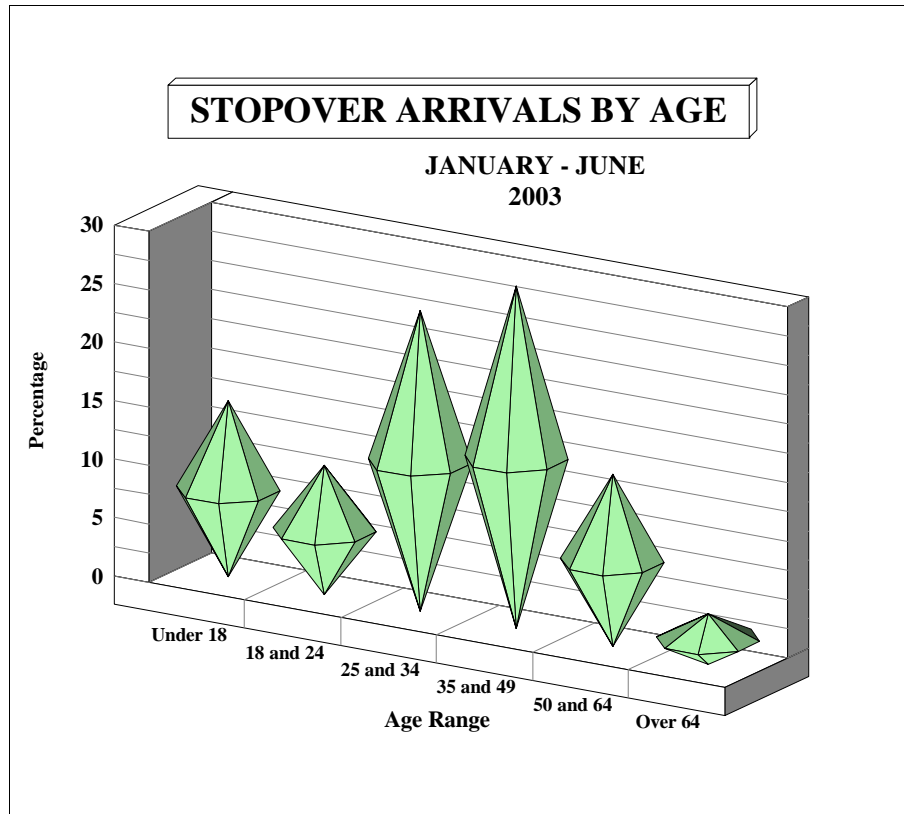


Fig. 3

AGE DISTRIBUTION OF STOPOVER ARRIVALS

Age	JUNE		JAN.-JUNE		JAN.-JUNE		%Change 2003/02
	2003	% Share	2003	% Share	2002	% Share	
Under 18	18,354	15.0	75,831	11.2	68,749	10.8	10.3%
18 and 24	13,436	11.0	65,127	9.6	60,880	9.6	7.0%
25 and 34	31,369	25.7	155,202	22.9	151,355	23.9	2.5%
35 and 49	35,756	29.3	226,387	33.4	212,293	33.5	6.6%
50 and 64	17,951	14.7	123,467	18.2	110,694	17.5	11.5%
Over 64	5,205	4.3	32,301	4.8	30,044	4.7	7.5%
<b>Total</b>	<b>122,071</b>	<b>100.0</b>	<b>678,315</b>	<b>100.0</b>	<b>634,015</b>	<b>100.0</b>	<b>7.0%</b>

**TABLE 4****CRUISE PASSENGER ARRIVALS BY MONTH AND PORT OF CALL  
JANUARY - JUNE 2003**

	MONTEGO BAY		% Change 2003/02		OCHO RIOS		% Change 2003/02		2003 TOTAL		2002 TOTAL		% Change 2003/02	
	CALLS	PAX	CALLS	PAX	CALLS	PAX	CALLS	PAX	CALLS	PAX	CALLS	PAX	CALLS	PAX
January	25	43,827	56.3%	74.4%	35	75,007	16.7%	13.2%	60	118,834	46	91,399	30.4%	30.0%
February	24	39,006	71.4%	121.0%	35	77,390	20.7%	30.8%	60	116,451	43	76,799	39.5%	51.6%
March	27	38,558	92.9%	100.8%	41	89,932	57.7%	49.2%	69	128,758	41	79,547	68.3%	61.9%
April	19	33,601	216.7%	335.1%	30	74,408	-6.3%	9.9%	49	108,009	38	75,442	28.9%	43.2%
Jan. - Apr.	<b>95</b>	<b>154,992</b>	<b>90.0%</b>	<b>122.3%</b>	<b>141</b>	<b>316,737</b>	<b>20.5%</b>	<b>25.0%</b>	<b>238</b>	<b>472,052</b>	<b>168</b>	<b>323,187</b>	<b>41.7%</b>	<b>46.1%</b>
May	7	16,907	40.0%	52.0%	18	47,443	5.9%	9.5%	25	64,350	22	54,453	13.6%	18.2%
June	6	14,214	50.0%	43.2%	17	50,403	6.3%	14.0%	24	64,812	20	54,125	20.0%	19.7%
May - June	<b>13</b>	<b>31,121</b>	<b>44.4%</b>	<b>47.8%</b>	<b>35</b>	<b>97,846</b>	<b>6.1%</b>	<b>11.8%</b>	<b>49</b>	<b>129,162</b>	<b>42</b>	<b>108,578</b>	<b>16.7%</b>	<b>19.0%</b>
Jan. - June	<b>108</b>	<b>186,113</b>	<b>83.1%</b>	<b>105.1%</b>	<b>176</b>	<b>414,583</b>	<b>17.3%</b>	<b>21.6%</b>	<b>287</b>	<b>601,214</b>	<b>210</b>	<b>431,765</b>	<b>36.7%</b>	<b>39.2%</b>

- \* Note:
1. During the month of January three Cruise Ship calls with 3,174 Cruise passengers visited two ports.
  2. During the month of February 2 Cruise Ship calls with 2,798 Cruise passengers visited two ports.
  3. Included in the total Cruise passengers for the month of February, 1 call with 55 passengers visited Port Antonio.
  4. During the month of March 3 Cruise Ship calls with 2,679 Cruise passengers visited two ports.
  5. Included in the total Cruise passengers for the month of March, 1 call with 268 passengers visited Kingston.
  6. Included in the total Cruise passengers for the month of June, 1 call with 195 passengers visited Port Antonio.

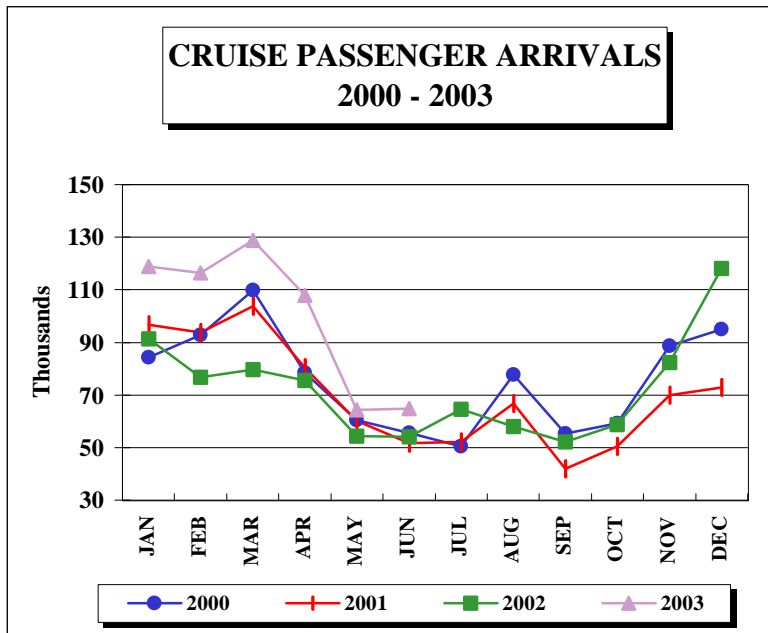


FIG. 4

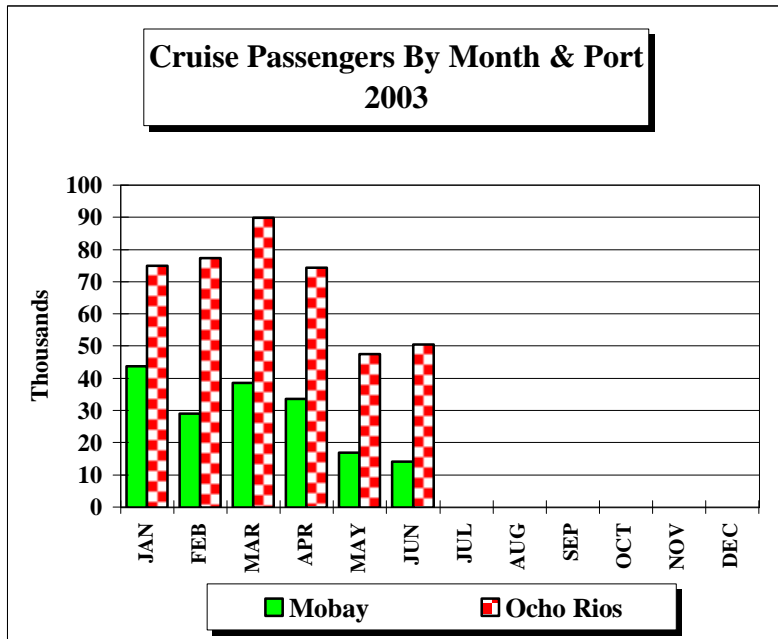


FIG. 4a

**TABLE 5A**  
**LANDED TOURISTS BY SCHEDULED & CHARTERED AIRLINES**

	<b>JUNE 2003</b>			<b>JANUARY - JUNE 2003</b>		
	<b>SCHEDULED AIRLINES</b>	<b>CHARTERED AIRLINES</b>	<b>TOTAL STOPOVERS</b>	<b>SCHEDULED AIRLINES</b>	<b>CHARTERED AIRLINES</b>	<b>TOTAL STOPOVERS</b>
<b>U.S.A.</b>						
<b><u>NORTHEAST (NEW YORK)</u></b>						
Connecticut	1,927	2	1,929	11,731	271	12,002
Delaware	332	0	332	2,495	15	2,510
Maine	162	0	162	1,484	20	1,504
Maryland	3,770	0	3,770	17,508	205	17,713
Massachusetts	2,105	2	2,107	16,153	447	16,600
New Hampshire	252	1	253	2,535	79	2,614
New Jersey	5,040	8	5,048	29,874	360	30,234
New York	13,194	21	13,215	75,772	1,635	77,407
Pennsylvania	5,178	9	5,187	28,318	483	28,801
Rhode Island	223	0	223	1,882	57	1,939
Vermont	76	0	76	953	21	974
Virginia	1,995	8	2,003	10,371	375	10,746
Washington D.C.	522	2	524	2,535	33	2,568
West Virginia	156	6	162	828	33	861
<b>Total</b>	<b>34,932</b>	<b>59</b>	<b>34,991</b>	<b>202,439</b>	<b>4,034</b>	<b>206,473</b>
<b><u>MIDWEST (CHICAGO)</u></b>						
Illinois	2,735	1,584	4,319	17,003	12,253	29,256
Indiana	1,315	182	1,497	5,772	2,204	7,976
Iowa	435	67	502	3,418	1,469	4,887
Kansas	505	40	545	2,038	298	2,336
Kentucky	570	236	806	2,452	801	3,253
Michigan	1,691	400	2,091	11,374	6,678	18,052
Minnesota	746	7	753	8,113	5,992	14,105
Missouri	787	1,702	2,489	3,503	7,763	11,266
Nebraska	428	1	429	2,365	97	2,462
North Dakota	62	1	63	565	197	762
Ohio	1,931	229	2,160	8,999	1,844	10,843
South Dakota	81	2	83	823	324	1,147
Wisconsin	787	286	1,073	6,451	11,109	17,560
<b>Total</b>	<b>12,073</b>	<b>4,737</b>	<b>16,810</b>	<b>72,876</b>	<b>51,029</b>	<b>123,905</b>

**TABLE 5A**  
**LANDED TOURISTS BY SCHEDULED & CHARTERED AIRLINES**

	<b>JUNE 2003</b>			<b>JANUARY - JUNE 2003</b>		
	<b>SCHEDULED AIRLINES</b>	<b>CHARTERED AIRLINES</b>	<b>TOTAL STOPOVERS</b>	<b>SCHEDULED AIRLINES</b>	<b>CHARTERED AIRLINES</b>	<b>TOTAL STOPOVERS</b>
<b><u>SOUTH (MIAMI)</u></b>						
Alabama	950	83	1,033	3,807	227	4,034
Arkansas	354	102	456	1,388	210	1,598
Florida	13,982	23	14,005	57,614	173	57,787
Georgia	5,326	183	5,509	20,891	879	21,770
Louisiana	612	735	1,347	2,495	1,014	3,509
Mississippi	279	115	394	1,314	205	1,519
North Carolina	2,227	98	2,325	8,985	520	9,505
Oklahoma	318	461	779	1,372	770	2,142
Puerto Rico	108	0	108	604	1	605
South Carolina	1,053	78	1,131	4,130	227	4,357
Tennessee	1,410	174	1,584	6,157	481	6,638
Texas	3,907	2,637	6,544	14,534	3,510	18,044
Total	<u>30,526</u>	<u>4,689</u>	<u>35,215</u>	<u>123,291</u>	<u>8,217</u>	<u>131,508</u>
<b><u>WEST (LOS ANGELES)</u></b>						
Alaska	28	0	28	181	4	185
Arizona	591	5	596	2,302	40	2,342
California	4,880	19	4,899	18,284	222	18,506
Colorado	731	23	754	3,445	142	3,587
Hawaii	20	0	20	110	9	119
Idaho	86	0	86	633	5	638
Montana	54	0	54	525	5	530
Nevada	278	4	282	1,216	21	1,237
New Mexico	112	10	122	459	23	482
Oregon	189	1	190	1,142	18	1,160
Utah	164	10	174	853	29	882
Washington	394	4	398	2,127	45	2,172
Wyoming	43	0	43	228	6	234
Total	<u>7,570</u>	<u>76</u>	<u>7,646</u>	<u>31,505</u>	<u>569</u>	<u>32,074</u>
<b>TOTAL U.S.A.</b>	<u>85,101</u>	<u>9,561</u>	<u>94,662</u>	<u>430,111</u>	<u>63,849</u>	<u>493,960</u>

**TABLE 5A**  
**LANDED TOURISTS BY SCHEDULED & CHARTERED AIRLINES**

	<b>JUNE 2003</b>			<b>JANUARY - JUNE 2003</b>		
	<b>SCHEDULED AIRLINES</b>	<b>CHARTERED AIRLINES</b>	<b>TOTAL STOPOVERS</b>	<b>SCHEDULED AIRLINES</b>	<b>CHARTERED AIRLINES</b>	<b>TOTAL STOPOVERS</b>
<b><u>CANADA (TORONTO)</u></b>						
Alberta	155	9	164	2,122	140	2,262
British Columbia	159	2	161	1,464	66	1,530
Manitoba	35	4	39	1,197	835	2,032
New Brunswick	13	0	13	615	21	636
Newfoundland	30	0	30	319	21	340
Nova Scotia	44	10	54	1,093	29	1,122
Ontario	2,697	1,405	4,102	22,829	14,015	36,844
P.E. Island	1	0	1	118	2	120
Quebec	297	7	304	4,239	1,926	6,165
Saskatchewan	31	1	32	656	178	834
Other Canada	14	3	17	90	29	119
<b>Total</b>	<b>3,476</b>	<b>1,441</b>	<b>4,917</b>	<b>34,742</b>	<b>17,262</b>	<b>52,004</b>
<b><u>LONDON OFFICE</u></b>						
<b><u>Northern Europe</u></b>						
U.K.	8,235	4,659	12,894	45,859	22,072	67,931
Denmark	42	0	42	216	2	218
Finland	11	0	11	277	4	281
Norway	106	1	107	476	5	481
Sweden	95	1	96	534	12	546
<b><u>Southern Europe</u></b>						
Greece	12	0	12	126	9	135
Italy	304	426	730	4,785	7,658	12,443
Portugal	39	8	47	228	14	242
Spain	124	705	829	819	1,674	2,493
<b><u>Western Europe</u></b>						
Austria	136	0	136	1,034	3	1,037
Belgium	321	0	321	998	4	1,002
France	148	3	151	1,334	19	1,353
Germany	875	8	883	7,998	50	8,048
Luxemburg	5	0	5	36	0	36
Netherlands	411	1	412	1,725	7	1,732
Switzerland	158	5	163	1,080	32	1,112
<b><u>Central/East Europe</u></b>						
<b>Czechoslovakia</b>	10	0	10	185	2	187
Hungary	18	1	19	91	3	94
Poland	34	0	34	359	15	374
Russia	49	0	49	683	5	688
Other Europe	66	0	66	557	18	575
<b>Total</b>	<b>11,199</b>	<b>5,818</b>	<b>17,017</b>	<b>69,400</b>	<b>31,608</b>	<b>101,008</b>

**TABLE 5A**  
**LANDED TOURISTS BY SCHEDULED & CHARTERED AIRLINES**

	<b>JUNE 2003</b>			<b>JANUARY - JUNE 2003</b>		
	<b>SCHEDULED AIRLINES</b>	<b>CHARTERED AIRLINES</b>	<b>TOTAL STOPOVERS</b>	<b>SCHEDULED AIRLINES</b>	<b>CHARTERED AIRLINES</b>	<b>TOTAL STOPOVERS</b>
<b><u>OTHER COUNTRIES</u></b>						
<b><u>CENTRAL AMERICA</u></b>						
Mexico	159	2	161	904	8	912
Belize	72	0	72	626	0	626
Costa Rica	42	0	42	259	0	259
El Salvador	6	0	6	64	0	64
Guatemala	23	0	23	158	0	158
Honduras	17	0	17	84	0	84
Nicaragua	8	0	8	22	0	22
Panama	89	0	89	519	0	519
Total	416	2	418	2,636	8	2,644
<b><u>SOUTH AMERICA</u></b>						
Argentina	25	0	25	359	0	359
Bolivia	6	0	6	33	0	33
Brazil	58	0	58	374	1	375
Chile	42	0	42	215	0	215
Colombia	23	0	23	188	258	446
Ecuador	16	0	16	39	0	39
Guyana	173	1	174	839	1	840
Paraguay	4	0	4	11	0	11
Peru	26	0	26	172	0	172
Surinam	16	0	16	137	0	137
Uruguay	3	0	3	29	0	29
Venezuela	60	0	60	329	3	332
Other South America	0	0	0	4	0	4
Total	452	1	453	2,729	263	2,992
Total Latin America	868	3	871	5,365	271	5,636

**TABLE 5A**  
**LANDED TOURISTS BY SCHEDULED & CHARTERED AIRLINES**

	<b>JUNE 2003</b>			<b>JANUARY - JUNE 2003</b>		
	<b>SCHEDULED AIRLINES</b>	<b>CHARTERED AIRLINES</b>	<b>TOTAL STOPOVERS</b>	<b>SCHEDULED AIRLINES</b>	<b>CHARTERED AIRLINES</b>	<b>TOTAL STOPOVERS</b>
<b>CARIBBEAN</b>						
Antigua	160	1	161	735	3	738
Bahamas	285	0	285	1,334	6	1,340
Barbados	498	0	498	2,447	0	2,447
Bermuda	143	0	143	887	158	1,045
British Virgin Is.	74	0	74	232	0	232
Cayman Is.	858	0	858	5,592	1	5,593
Dominica	45	0	45	178	0	178
Grenada	66	0	66	295	0	295
Monsterrat	13	0	13	53	1	54
St. Kitts/Nevis/Anguilla	78	0	78	344	1	345
St. Lucia	186	0	186	831	0	831
St. Vincent	74	0	74	255	1	256
Turks & Caicos Is.	52	0	52	420	0	420
Trinidad & Tobago	705	0	705	3,521	1	3,522
<b>Comm. Caribbean</b>	<b>3,237</b>	<b>1</b>	<b>3,238</b>	<b>17,124</b>	<b>172</b>	<b>17,296</b>
Aruba	33	0	33	226	0	226
Bonaire	0	0	0	16	0	16
Cuba	63	0	63	316	0	316
Curacao	78	0	78	663	0	663
Dominican Republic	90	0	90	395	0	395
Guadelope	1	15	16	34	15	49
Haiti	64	0	64	379	1	380
St. Maarten	57	1	58	268	1	269
All other Caribbean	36	0	36	234	0	234
<b>Other Caribbean</b>	<b>422</b>	<b>16</b>	<b>438</b>	<b>2,531</b>	<b>17</b>	<b>2,548</b>
<b>TOTAL CARIBBEAN</b>	<b>3,659</b>	<b>17</b>	<b>3,676</b>	<b>19,655</b>	<b>189</b>	<b>19,844</b>
<b>OTHER COUNTRIES</b>						
African Countries	120	3	123	468	14	482
Isreal	67	0	67	358	6	364
Saudi Arabia	4	0	4	14	0	14
Turkey	8	0	8	59	10	69
Other Middle East	34	0	34	131	2	133
India & Pakistan	62	1	63	271	9	280
Japan	269	0	269	1,865	11	1,876
China	37	0	37	231	37	268
Taiwan	7	0	7	44	0	44
Korea	18	0	18	93	3	96
Philippines	88	0	88	662	1	663
Singapore	13	0	13	55	2	57
Other Asia	27	0	27	127	2	129
Australia	148	1	149	1,261	8	1,269
New Zealand	21	0	21	116	0	116
All Other Ctries	0	0	0	3	0	3
Total	923	5	928	5,758	105	5,863
<b>GRAND TOTAL</b>	<b>105,226</b>	<b>16,845</b>	<b>122,071</b>	<b>565,031</b>	<b>113,284</b>	<b>678,315</b>

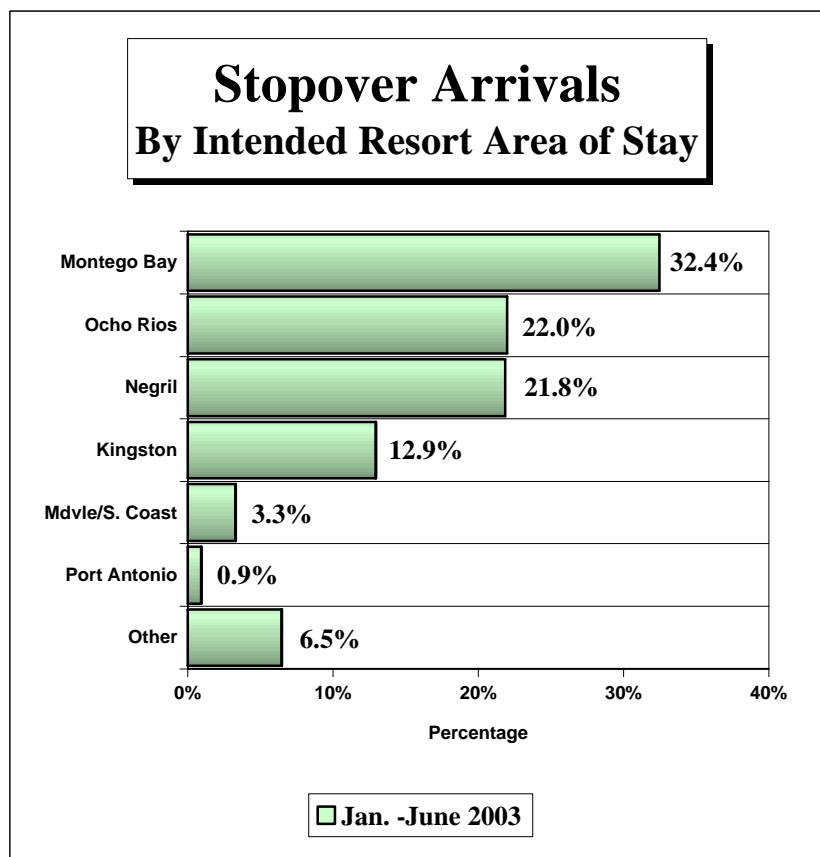


Fig. 5

### STOPOVER ARRIVALS BY INTENDED AREA OF STAY

Area	JUNE		JAN.-JUNE		JAN.-JUNE		%Change 2003/02
	2003	%Share	2003	%Share	2002	%Share	
Montego Bay	37,241	30.5%	220,072	32.4%	202,704	32.0%	8.6%
Ocho Rios	28,060	23.0%	149,217	22.0%	138,164	21.8%	8.0%
Negril	23,011	18.9%	148,078	21.8%	142,099	22.4%	4.2%
Kingston	17,686	14.5%	87,835	12.9%	83,127	13.1%	5.7%
Mdvle/S. Coast	4,865	4.0%	22,584	3.3%	21,592	3.4%	4.6%
Port Antonio	1,355	1.1%	6,431	0.9%	6,265	1.0%	2.6%
Other	9,853	8.1%	44,098	6.5%	40,064	6.3%	10.1%
<b>Total</b>	<b>122,071</b>	<b>100.0%</b>	<b>678,315</b>	<b>100.0%</b>	<b>634,015</b>	<b>100.0%</b>	<b>7.0%</b>