

JAMAICA TOURIST BOARD

IN JULY 2004.....

- Stopover arrivals were up by 11%
- US Market increased by 8%
- Canada increased by 17%
- Europe increased by 15%
- Cruise Passenger arrivals down by 19%.

TOURIST (Stopovers)

Stopover arrivals in July 2004 were **160,231**, an increase of **11.2%** over the **144,039** recorded for July 2003. This is the second time the month of July has recorded the highest number of visitor arrivals to Jamaica. Cumulatively, stopovers for the January to July period increased by **9.8%** with **902,569** compared to **822,354** in 2003.

United States

Stopover arrivals from the United States market increased by **8%** in July with a total of **117,728** visitors compared to the **107,337** visitors who came in July 2003. All US Market regions recorded increases. The Northeast was up **11%**, the Midwest up **4%**, the South up **10%** and the West up **9%**.

For the January to July period the US market increased by **9%**. Total visitors from this market was **652,728** compared to **600,692** for the corresponding period in 2003. The Northeast increased by **12%**, the Midwest by **6%**, the South by **5%** and the West increased by **11%**.

Canada

During July, the Canadian market increased by **17%** with a total of **8,395** stopovers compared to **7,175** in July 2003. The leading province, Ontario increased by **18%**, and the second most important visitor-producing province, Quebec increased by **4%**. For the other provinces, Alberta and Manitoba grew by **29%** and **43%** respectively, while British Columbia declined by **11%**.

Cumulatively, the Canadian market increased by **13%** in the January to July period, with a total of **66,934** stopovers compared to **59,179** in 2003. The main provinces Ontario and Quebec recorded increases of **11%** and

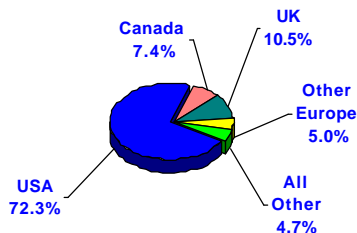
12% respectively. The other notable increases were Alberta up **65%**, Nova Scotia up **23%**, British Columbia up **17%** and New Brunswick up **24%**.

Europe

The European market grew by approximately **15%** in July 2004. The market provided a total of **24,744** stopover visitors compared to the **21,608** recorded in July 2003. The main contributors to this growth came from the United Kingdom with **17,585** visitors up by **13%**, Italy with **2,112** up by **48%** and Spain with **1,500** up by **22%**. The other countries which showed notable increases were: Belgium (**54%**), and France (**26%**).

Cumulatively, for the January to July period, the European market increased by **15%**. Total stopovers for the period was **140,583** compared to **122,616** in 2003. The United Kingdom with a total of **95,048** stopovers increased by **14%**, Italy with **13,866** was just below the 2003 figure of **13,869**, and Germany with a total of **10,829** increased by **16%**.

STOPOVER ARRIVALS BY MARKET SHARE
January - July 2004



Latin America

The Latin American market increased by **40%** in July with a total of **1,473** stopovers compared to **1,051** in July 2003. The Central American region increased by **102%**, with **893** stopovers compared to **442** in July 2003. The main contributor to this increase was Mexico with **668** visitors. The South American Countries combined declined by **5%** with **580** stopovers compared to **609** in July 2003.

For the January to July period, the Latin American market increased by **2%** with a total of **6,825** visitors compared to **6,687** for the corresponding period in 2003.

The Caribbean

Visitors to Jamaica from the Caribbean region increased by **25%** in July with a total of **6,721** visitors, compared to **5,377** in July 2003.

The major Caribbean countries which provided visitors to Jamaica in July were: the Cayman Islands (**1,558**) up **33%** and Trinidad & Tobago (**1,103**) up **50%**. Barbados with **845** increased by **25%** and the Bahamas with **403**, up by approximately **9%**.

Cumulatively, during the January to July period, Caribbean stopover arrivals to Jamaica increased by **11%**, moving from **25,826** in 2003 to **28,600** in 2004. The Cayman Islands continued to be the leading provider of visitors to Jamaica. In the period under review, they provided a total of **8,003** visitors, followed by Trinidad and Tobago with **4,632**, Barbados with **3,495** and the Bahamas with **1,777** visitors.

Japan

The Japanese market increased by **5%** in July with a total of **376** stopovers compared to **357** in July 2003.

Cumulatively for the January to July period, a total of **2,789** Japanese visitors came to Jamaica which was up by approximately **25%** from the **2,233** recorded for the corresponding period in 2003.

Other Countries

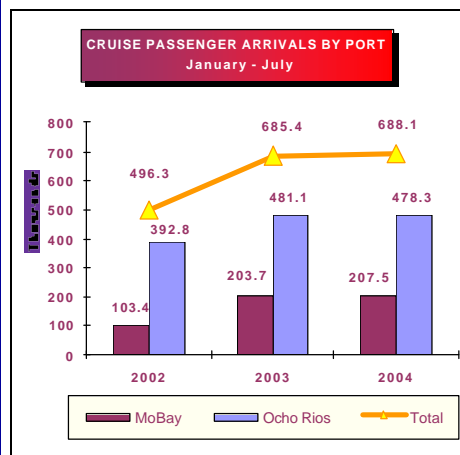
All the other countries, with a total of **4,110** stopovers in the January to July period recorded a decline of **20%** against the **5,121** who came for the same period in 2003.

Market Share

The market share of stopover visitors for the January to July period were as follows:

USA **72.3%**; Canada **7.4%**; UK **10.5%**; Continental Europe **5%**; the Caribbean **3.2%**; Latin America **0.8%**; and Other Countries **0.8%**.

Cruise Passengers



A total of **68,203** cruise passengers visited Jamaica in July 2004. This represents a decline of **19.0%** against the **84,154** recorded for July 2003. Cumulatively, a total of **688,065** cruise passengers visited Jamaica in the January to July period, a **0.4%** increase against the **685,368** recorded for the corresponding period in 2003.

A total of **50,750** cruise passengers visited the port of Ocho Rios in July, a decline of **24%** over the **66,546** recorded for July 2003. For the January to July period cruise passenger arrivals to the port of Ocho Rios was **478,255**, a decrease of **0.6%** against the **414,583** recorded for the corresponding period in 2003.

Montego Bay recorded a total of **17,453** cruise passengers for the month which was down **0.9%** against the **17,608** recorded for 2003. Cumulatively, for the January to July period, cruise passenger arrivals to Montego Bay was **207,535**, an increase of **2%** against the **203,721** recorded for the same period in 2003.

Length of Stay

The average length of stay of stopovers in July was **10.7** nights against **11.5** for July 2003. The average length of stay in hotels was **6.7** nights the same level as in July 2003.

Cumulatively, the average length of stay for the January to July period was approximately **9** nights, same as that recorded for the similar period in 2003.

First and Repeat Visitors

Approximately **53%** or **78,621** of the **148,904** Foreign Nationals who visited Jamaica in July were first-time visitors and the other **47%** or **70,283** were repeat guests.

Cumulatively, in the January to July period, some **56%** of the **853,984** Foreign Nationals who visited the island were first-time guests and **44%** were repeat guests.

TABLE 1
TOURIST ARRIVALS
January - July
2004

Month	Foreign Nationals	<----- Stopovers ----->		Non-Resident Jamaicans	+/-		Total Stopover Arrivals	+/-	
		2004/03	2004/02		2004/03	2004/02		2004/03	2004/02
January	104,425	8.9%	22.7%	4,925	-9.3%	-1.2%	109,350	7.9%	21.4%
February	115,183	8.2%	20.9%	4,946	-1.4%	4.4%	120,129	7.8%	20.1%
March	130,636	5.2%	5.6%	5,970	11.8%	-8.4%	136,606	5.5%	4.9%
April	123,841	18.4%	31.4%	7,260	-1.6%	12.8%	131,101	17.1%	30.2%
Jan.-Apr.	474,085	10.0%	19.0%	23,101	-0.3%	1.9%	497,186	9.5%	18.1%
May	105,842	10.5%	14.3%	5,917	-4.7%	-11.5%	111,759	9.5%	12.5%
June	125,153	9.7%	18.0%	8,240	3.1%	7.5%	133,393	9.3%	17.3%
July	148,904	11.5%	17.6%	11,327	8.3%	2.3%	160,231	11.2%	16.4%
May-Jul.	379,899	10.6%	16.8%	25,484	3.3%	0.2%	405,383	10.1%	15.6%
Jan.-Jul.	853,984	10.3%	18.0%	48,585	1.6%	1.0%	902,569	9.8%	17.0%

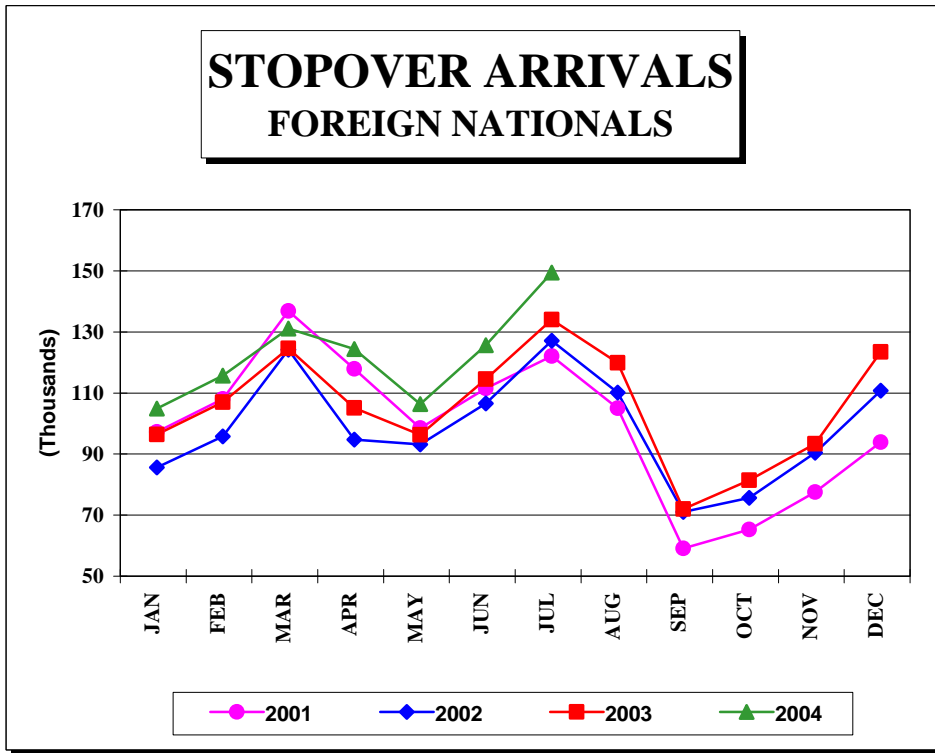


FIG. 1

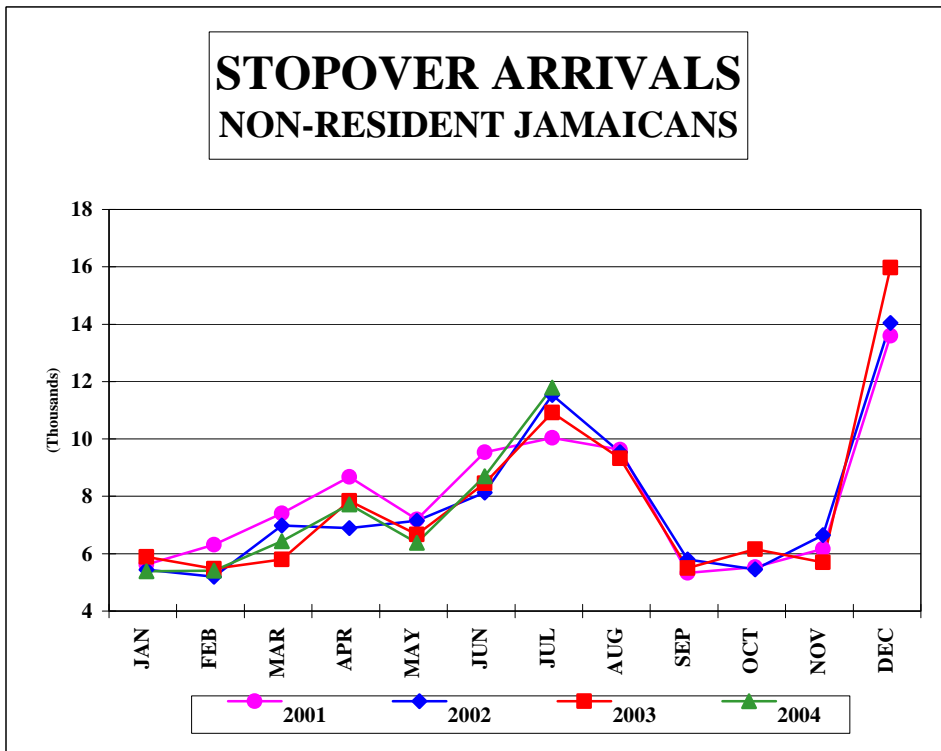


FIG. 1a

TABLE 1.1**First & Repeat Visit to Jamaica**

FOREIGN NATIONALS

2004

	Arrivals				TOTAL	% SHARE	
	First Visit	+/-	Repeat Visit	+/-		First Visit	Repeat Visit
Jan.	54,608	6.3	49,817	12.0	104,425	52.3	47.7
Feb.	61,517	8.6	53,666	7.8	115,183	53.4	46.6
Mar.	76,455	3.2	54,181	8.2	130,636	58.5	41.5
Apr.	68,644	19.7	55,197	16.8	123,841	55.4	44.6
Jan.-Apr.	261,224	9.1	212,861	11.1	474,085	55.1	44.9
May	61,937	13.8	43,905	6.0	105,842	58.5	41.5
Jun.	71,284	9.4	53,869	10.1	125,153	57.0	43.0
Jul.	78,621	11.4	70,283	11.6	148,904	52.8	47.2
May-Jul.	211,842	11.4	168,057	9.6	379,899	55.8	44.2
Jan.-Jul.	473,066	10.1	380,918	10.4	853,984	55.4	44.6

TABLE 1.2
STOPOVER ARRIVALS BY MARKET REGION
AND MONTH OF ARRIVAL 2004

	U.S.A.				Canada	U.K. Europe	Latin America	Caribbean	Asia	Other Countries	Total
	Northeast	Mid-West	South	West							
January	31,236	23,510	14,108	4,542	12,336	18,959	766	2,980	521	392	109,350
February	37,653	27,054	14,984	4,183	12,529	19,008	841	2,822	699	356	120,129
March	42,908	29,393	20,789	5,495	11,239	21,009	1,209	3,585	686	293	136,606
April	47,843	20,524	22,329	6,670	9,619	17,658	773	4,749	611	325	131,101
Jan.-Apr.	159,640	100,481	72,210	20,890	45,723	76,634	3,589	14,136	2,517	1,366	497,186
May	33,313	14,271	26,608	6,419	6,859	19,103	981	3,233	570	402	111,759
June	39,235	16,851	36,446	8,636	5,957	20,102	782	4,510	502	372	133,393
July	54,122	15,699	38,723	9,184	8,395	24,744	1,473	6,721	603	567	160,231
May - Jul.	126,670	46,821	101,777	24,239	21,211	63,949	3,236	14,464	1,675	1,341	405,383
Jan. - Jul.	286,310	147,302	173,987	45,129	66,934	140,583	6,825	28,600	4,192	2,707	902,569
+/- %	12.2%	6.0%	4.8%	11.3%	13.1%	14.7%	2.1%	10.7%	2.6%	-17.2%	9.8%

TABLE 2

TOTAL STOPOVER ARRIVALS BY PERMANENT RESIDENCE

	<u>JULY</u>			<u>% C h a n g e</u>			<u>JANUARY - JULY</u>			<u>% C h a n g e</u>				
	<u>2001</u>	<u>2002</u>	<u>2003</u>	<u>2004</u>	<u>2004/03</u>	<u>2004/02</u>	<u>2004/01</u>	<u>2001</u>	<u>2002</u>	<u>2003</u>	<u>2004</u>	<u>2004/03</u>	<u>2004/02</u>	<u>2004/01</u>
U.S.A.														
<u>NORTHEAST (NEW YORK)</u>														
Connecticut	2,375	2,385	2,652	3,498	31.9	46.7	47.3	15,469	13,761	14,654	17,325	18.2	25.9	12.0
Delaware	479	490	488	597	22.3	21.8	24.6	3,667	2,942	2,998	3,580	19.4	21.7	-2.4
Maine	121	87	131	120	-8.4	37.9	-0.8	1,962	1,591	1,635	2,358	44.2	48.2	20.2
Maryland	3,756	4,262	4,991	5,162	3.4	21.1	37.4	21,891	20,956	22,704	25,269	11.3	20.6	15.4
Massachusetts	2,288	2,087	2,380	2,509	5.4	20.2	9.7	22,463	18,273	18,980	22,629	19.2	23.8	0.7
New Hampshire	231	156	224	261	16.5	67.3	13.0	3,622	2,704	2,838	3,513	23.8	29.9	-3.0
New Jersey	5,564	5,895	6,878	8,070	17.3	36.9	45.0	36,897	33,074	37,113	41,581	12.0	25.7	12.7
New York	17,189	19,140	21,530	23,499	9.1	22.8	36.7	102,499	93,194	98,937	108,274	9.4	16.2	5.6
Pennsylvania	5,135	4,820	5,681	6,556	15.4	36.0	27.7	34,366	31,782	34,482	38,296	11.1	20.5	11.4
Rhode Island	229	244	282	384	36.2	57.4	67.7	2,208	1,971	2,221	2,832	27.5	43.7	28.3
Vermont	76	41	48	70	45.8	70.7	-7.9	1,354	895	1,022	1,411	38.1	57.7	4.2
Virginia	1,853	2,105	2,502	2,479	-0.9	17.8	33.8	13,310	12,412	13,248	14,413	8.8	16.1	8.3
Washington D.C.	462	519	764	677	-11.4	30.4	46.5	3,293	2,942	3,332	3,298	-1.0	12.1	0.2
West Virginia	183	233	182	240	31.9	3.0	31.1	1,397	1,088	1,042	1,531	46.9	40.7	9.6
Total	39,941	42,464	48,733	54,122	11.1	27.5	35.5	264,398	237,585	255,206	286,310	12.2	20.5	8.3
<u>MIDWEST (CHICAGO)</u>														
Illinois	4,370	4,404	4,197	4,303	2.5	-2.3	-1.5	34,759	32,020	33,453	34,326	2.6	7.2	-1.2
Indiana	1,125	1,093	1,214	1,330	9.6	21.7	18.2	8,578	8,057	9,190	9,176	-0.2	13.9	7.0
Iowa	407	461	447	389	-13.0	-15.6	-4.4	4,890	4,862	5,334	5,820	9.1	19.7	19.0
Kansas	544	537	472	587	24.4	9.3	7.9	3,512	2,788	2,808	3,606	28.4	29.3	2.7
Kentucky	581	898	746	844	13.1	-6.0	45.3	3,582	4,056	3,999	4,145	3.7	2.2	15.7
Michigan	1,942	1,582	1,661	1,872	12.7	18.3	-3.6	21,211	16,621	19,713	20,333	3.1	22.3	-4.1
Minnesota	593	706	593	585	-1.3	-17.1	-1.3	14,356	12,902	14,698	15,077	2.6	16.9	5.0
Missouri	1,937	2,239	2,455	2,423	-1.3	8.2	25.1	12,149	11,962	13,721	14,731	7.4	23.1	21.3
Nebraska	315	334	357	381	6.7	14.1	21.0	3,008	2,478	2,819	3,159	12.1	27.5	5.0
North Dakota	57	68	35	50	42.9	-26.5	-12.3	763	779	797	1,307	64.0	67.8	71.3
Ohio	1,876	1,930	2,012	1,995	-0.8	3.4	6.3	13,475	13,267	12,855	13,444	4.6	1.3	-0.2
South Dakota	70	85	46	107	132.6	25.9	52.9	874	814	1,193	1,348	13.0	65.6	54.2
Wisconsin	919	792	836	833	-0.4	5.2	-9.4	19,949	17,363	18,396	20,830	13.2	20.0	4.4
Total	14,736	15,129	15,071	15,699	4.2	3.8	6.5	141,106	127,969	138,976	147,302	6.0	15.1	4.4

TABLE 2

TOTAL STOPOVER ARRIVALS BY PERMANENT RESIDENCE

	<u>JULY</u>			<u>% C h a n g e</u>			<u>JANUARY - JULY</u>			<u>% C h a n g e</u>				
	<u>2001</u>	<u>2002</u>	<u>2003</u>	<u>2004</u>	<u>2004/03</u>	<u>2004/02</u>	<u>2004/01</u>	<u>2001</u>	<u>2002</u>	<u>2003</u>	<u>2004</u>	<u>2004/03</u>	<u>2004/02</u>	<u>2004/01</u>
<u>SOUTH (MIAMI)</u>														
Alabama	828	851	859	879	2.3	3.3	6.2	4,699	4,476	4,893	4,831	-1.3	7.9	2.8
Arkansas	491	421	358	384	7.3	-8.8	-21.8	1,912	1,763	1,956	2,134	9.1	21.0	11.6
Florida	13,049	14,884	14,523	15,593	7.4	4.8	19.5	73,651	72,049	72,310	76,180	5.4	5.7	3.4
Georgia	4,946	6,232	5,512	6,457	17.1	3.6	30.5	26,902	28,970	27,282	28,521	4.5	-1.5	6.0
Louisiana	1,358	1,307	1,096	1,111	1.4	-15.0	-18.2	4,886	4,803	4,605	4,128	-10.4	-14.1	-15.5
Mississippi	431	429	425	432	1.6	0.7	0.2	2,092	2,148	1,944	2,224	14.4	3.5	6.3
North Carolina	1,961	2,006	2,211	2,516	13.8	25.4	28.3	11,872	10,970	11,716	12,893	10.0	17.5	8.6
Oklahoma	647	780	749	772	3.1	-1.0	19.3	2,805	2,824	2,891	3,212	11.1	13.7	14.5
South Carolina	867	908	804	1,131	40.7	24.6	30.4	5,334	4,917	5,161	5,535	7.2	12.6	3.8
Tennessee	1,402	1,728	1,601	1,647	2.9	-4.7	17.5	7,345	8,148	8,239	8,359	1.5	2.6	13.8
Texas	7,562	7,204	6,936	7,801	12.5	8.3	3.2	24,251	26,330	24,980	25,970	4.0	-1.4	7.1
Total	33,542	36,750	35,074	38,723	10.4	5.4	15.4	165,749	167,398	165,977	173,987	4.8	3.9	5.0
<u>WEST (LOS ANGELES)</u>														
Alaska	18	20	39	26	-33.3	30.0	44.4	214	152	224	230	2.7	51.3	7.5
Arizona	1,019	487	578	599	3.6	23.0	-41.2	5,081	2,939	2,920	3,281	12.4	11.6	-35.4
California	5,391	5,988	5,950	6,425	8.0	7.3	19.2	26,164	24,842	24,456	27,638	13.0	11.3	5.6
Colorado	614	607	671	678	1.0	11.7	10.4	4,778	4,667	4,258	5,189	21.9	11.2	8.6
Hawaii	43	27	21	28	33.3	3.7	-34.9	177	116	140	180	28.6	55.2	1.7
Idaho	78	97	69	51	-26.1	-47.4	-34.6	820	650	707	570	-19.4	-12.3	-30.5
Montana	48	46	19	56	194.7	21.7	16.7	449	441	549	586	6.7	32.9	30.5
Nevada	273	209	289	294	1.7	40.7	7.7	1,278	1,153	1,526	1,568	2.8	36.0	22.7
New Mexico	100	110	95	121	27.4	10.0	21.0	798	629	577	711	23.2	13.0	-10.9
Oregon	212	212	200	271	35.5	27.8	27.8	1,533	1,392	1,360	1,430	5.1	2.7	-6.7
Utah	91	220	95	153	61.1	-30.5	68.1	676	885	977	931	-4.7	5.2	37.7
Washington	371	360	394	427	8.4	18.6	15.1	2,789	2,452	2,566	2,496	-2.7	1.8	-10.5
Wyoming	20	25	39	55	41.0	120.0	175.0	248	239	273	319	16.8	33.5	28.6
Total	8,278	8,408	8,459	9,184	8.6	9.2	10.9	45,005	40,557	40,533	45,129	11.3	11.3	0.3
TOTAL U.S.A.	96,497	102,751	107,337	117,728	9.7	14.6	22.0	616,258	573,509	600,692	652,728	8.7	13.8	5.9

TABLE 2

TOTAL STOPOVER ARRIVALS BY PERMANENT RESIDENCE

	<u>JULY</u>							<u>JANUARY - JULY</u>						
	<u>2001</u>	<u>2002</u>	<u>2003</u>	<u>2004</u>	<u>% C h a n g e</u>			<u>2001</u>	<u>2002</u>	<u>2003</u>	<u>2004</u>	<u>% C h a n g e</u>		
					2004/03	2004/02	2004/01					2004/03	2004/02	2004/01
<u>CANADA (TORONTO)</u>														
Alberta	309	211	211	272	28.9	28.9	-12.0	3,024	2,323	2,473	4,085	65.2	75.9	35.1
British Columbia	253	158	212	188	-11.3	19.0	-25.7	2,107	1,628	1,742	2,039	17.0	25.2	-3.2
Manitoba	79	101	56	80	42.9	-20.8	1.3	2,105	1,156	2,088	1,834	-12.2	58.7	-12.9
New Brunswick	35	20	9	19	111.1	-5.0	-45.7	1,026	686	645	802	24.3	16.9	-21.8
Newfoundland	60	37	24	29	20.8	-21.6	-51.7	407	388	364	392	7.7	1.0	-3.7
Nova Scotia	66	44	42	49	16.7	11.4	-25.8	1,746	865	1,164	1,433	23.1	65.7	-17.9
Ontario	7,161	7,213	6,011	7,119	18.4	-1.3	-0.6	53,663	46,652	42,855	47,679	11.3	2.2	-11.2
P.E. Island	2	1	7	0	-	-	-	104	98	127	143	12.6	45.9	37.5
Quebec	798	614	567	589	3.9	-4.1	-26.2	9,427	7,366	6,732	7,521	11.7	2.1	-20.2
Saskatchewan	64	22	14	30	114.3	36.4	-53.1	921	502	850	853	0.4	69.9	-7.4
Other Canada	50	31	22	20	-9.1	-35.5	-60.0	290	202	139	153	10.1	-24.3	-47.2
Total	8,877	8,452	7,175	8,395	17.0	-0.7	-5.4	74,820	61,866	59,179	66,934	13.1	8.2	-10.5
<u>LONDON OFFICE</u>														
<u>Northern Europe</u>														
U.K.	13,594	12,990	15,523	17,585	13.3	35.4	29.4	73,269	69,107	83,454	95,048	13.9	37.5	29.7
Denmark	78	55	26	108	315.4	96.4	38.5	494	339	244	442	81.1	30.4	-10.5
Finland	54	41	20	22	10.0	-46.3	-59.3	257	265	301	265	-12.0	0.0	3.1
Norway	75	68	70	74	5.7	8.8	-1.3	524	574	551	462	-16.2	-19.5	-11.8
Sweden	102	97	42	62	47.6	-36.1	-39.2	853	695	588	690	17.3	-0.7	-19.1
<u>Southern Europe</u>														
Greece	10	48	24	28	16.7	-41.7	180.0	115	160	159	130	-18.2	-18.8	13.0
Italy	952	953	1,426	2,112	48.1	121.6	121.8	7,590	6,575	13,869	13,866	-0.0	110.9	82.7
Portugal	23	99	33	90	172.7	-9.1	291.3	168	604	275	550	100.0	-8.9	227.4
Spain	790	867	1,225	1,500	22.4	73.0	89.9	2,117	3,252	3,718	5,203	39.9	60.0	145.8
<u>Western Europe</u>														
Austria	199	168	210	218	3.8	29.8	9.5	1,414	1,041	1,247	1,753	40.6	68.4	24.0
Belgium	91	150	323	498	54.2	232.0	447.3	653	753	1,325	2,433	83.6	223.1	272.6
France	196	299	231	292	26.4	-2.3	49.0	1,654	1,691	1,584	1,815	14.6	7.3	9.7
Germany	1,223	1,346	1,272	1,159	-8.9	-13.9	-5.2	12,217	8,116	9,320	10,829	16.2	33.4	-11.4
Luxemburg	5	31	23	9	-60.9	-71.0	80.0	51	61	59	79	33.9	29.5	54.9
Netherlands	390	380	590	550	-6.8	44.7	41.0	1,732	1,341	2,322	2,265	-2.5	68.9	30.8
Switzerland	264	244	219	236	7.8	-3.3	-10.6	1,549	1,133	1,331	2,389	79.5	110.9	54.2
<u>Central/East Europe</u>														
Czechoslovakia	24	60	16	26	62.5	-56.7	8.3	203	195	203	271	33.5	39.0	33.5
Hungary	10	52	8	7	-12.5	-86.5	-30.0	100	165	102	122	19.6	-26.1	22.0
Poland	28	87	212	38	-82.1	-56.3	35.7	237	394	586	486	-17.1	23.4	105.1
Russia	55	98	54	54	0.0	-44.9	-1.8	592	690	742	628	-15.4	-9.0	6.1
Other Europe	62	222	61	76	24.6	-65.8	22.6	536	720	636	857	34.7	19.0	59.9
Total	18,225	18,355	21,608	24,744	14.5	34.8	35.8	106,325	97,871	122,616	140,583	14.7	43.6	32.2

TABLE 2

TOTAL STOPOVER ARRIVALS BY PERMANENT RESIDENCE

	<u>JULY</u>			<u>% C h a n g e</u>			<u>JANUARY - JULY</u>			<u>% C h a n g e</u>				
	<u>2001</u>	<u>2002</u>	<u>2003</u>	<u>2004</u>	<u>2004/03</u>	<u>2004/02</u>	<u>2004/01</u>	<u>2001</u>	<u>2002</u>	<u>2003</u>	<u>2004</u>	<u>2004/03</u>	<u>2004/02</u>	<u>2004/01</u>
<u>LATIN AMERICA</u>														
<u>CENTRAL AMERICA</u>														
Mexico	319	230	213	668	213.6	190.4	109.4	1,580	1,139	1,125	1,693	50.5	48.6	7.2
Belize	66	91	64	68	6.3	-25.3	3.0	284	339	690	321	-53.5	-5.3	13.0
Costa Rica	59	65	45	43	-4.4	-33.8	-27.1	378	417	304	361	18.8	-13.4	-4.5
El Salvador	16	36	8	5	-37.5	-86.1	-68.8	129	140	72	120	66.7	-14.3	-7.0
Guatemala	31	42	24	11	-54.2	-73.8	-64.5	194	246	182	260	42.9	5.7	34.0
Honduras	11	20	12	13	8.3	-35.0	18.2	105	101	96	165	71.9	63.4	57.1
Nicaragua	2	6	1	6	500.0	0.0	200.0	25	53	23	43	87.0	-18.9	72.0
Panama	116	79	75	79	5.3	0.0	-31.9	820	592	594	586	-1.3	-1.0	-28.5
Total	620	569	442	893	102.0	56.9	44.0	3,515	3,027	3,086	3,549	15.0	17.2	1.0
<u>SOUTH AMERICA</u>														
Argentina	116	34	71	41	-42.3	20.6	-64.7	902	286	430	316	-26.5	10.5	-65.0
Bolivia	9	8	5	0	-100.0	-100.0	-100.0	41	34	38	26	-31.6	-23.5	-36.6
Brazil	83	137	93	76	-18.3	-44.5	-8.4	582	595	468	540	15.4	-9.2	-7.2
Chile	81	72	36	33	-8.3	-54.2	-59.3	451	450	251	289	15.1	-35.8	-35.9
Colombia	132	188	21	30	42.9	-84.0	-77.3	1,132	671	467	184	-60.6	-72.6	-83.7
Ecuador	28	6	12	10	-16.7	66.7	-64.3	175	110	51	59	15.7	-46.4	-66.3
Guyana	150	253	168	190	13.1	-24.9	26.7	933	1,012	1,008	1,002	-0.6	-1.0	7.4
Paraguay	6	5	29	2	-93.1	-60.0	-66.7	17	17	40	13	-67.5	-23.5	-23.5
Peru	53	29	44	27	-38.6	-6.9	-49.1	238	235	216	174	-19.4	-26.0	-26.9
Surinam	21	21	41	73	78.0	247.6	247.6	172	113	178	190	6.7	68.1	10.5
Uruguay	37	13	2	19	850.0	46.2	-48.6	98	53	31	72	132.3	35.8	-26.5
Venezuela	80	89	85	79	-7.1	-11.2	-1.2	808	789	417	410	-1.7	-48.0	-49.3
Other South America	0	2	2	0	-	-	-	4	11	6	1	-83.3	-90.9	-75.0
Total	796	857	609	580	-4.8	-32.3	-27.1	5,553	4,376	3,601	3,276	-9.0	-25.1	-41.0
Total Latin America	1,416	1,426	1,051	1,473	40.2	3.3	4.0	9,068	7,403	6,687	6,825	2.1	-7.8	-24.7

TABLE 2

TOTAL STOPOVER ARRIVALS BY PERMANENT RESIDENCE

	JULY						JANUARY - JULY							
	2001	2002	2003	2004	% Change			2001	2002	2003	2004	% Change		
					2004/03	2004/02	2004/01					2004/03	2004/02	2004/01
CARIBBEAN														
Antigua	199	253	339	274	-19.2	8.3	37.7	864	963	1,077	1,116	3.6	15.9	29.2
Bahamas	835	470	371	403	8.6	-14.3	-51.7	3,905	2,280	1,711	1,777	3.9	-22.1	-54.5
Barbados	503	542	675	845	25.2	55.9	68.0	2,490	2,705	3,122	3,495	11.9	29.2	40.4
Bermuda	295	226	333	300	-9.9	32.7	1.7	991	1,056	1,378	1,259	-8.6	19.2	27.0
British Virgin Is.	67	87	104	126	21.2	44.8	88.1	269	269	336	499	48.5	85.5	85.5
Cayman Is.	969	1,196	1,172	1,558	32.9	30.3	60.8	6,841	6,264	6,765	8,003	18.3	27.8	17.0
Dominica	61	80	35	62	77.1	-22.5	1.6	248	215	211	204	-3.3	-5.1	-17.7
Grenada	80	116	89	76	-14.6	-34.5	-5.0	332	361	384	346	-9.9	-4.2	4.2
Monsterrat	21	23	10	26	160.0	13.0	23.8	70	50	64	79	23.4	58.0	12.9
St. Kitts/Nevis/Anguilla	101	132	98	158	61.2	19.7	56.4	399	411	443	600	35.4	46.0	50.4
St. Lucia	145	250	211	346	64.0	38.4	138.6	786	882	1,042	1,156	10.9	31.1	47.1
St. Vincent	78	98	115	128	11.3	30.6	64.1	309	360	371	405	9.2	12.5	31.1
Turks & Caicos Is.	146	128	149	147	-1.3	14.8	0.7	558	529	569	610	7.2	15.3	9.3
Trinidad & Tobago	567	873	734	1,103	50.3	26.3	94.5	3,858	4,094	4,256	4,632	8.8	13.1	20.1
Comm. Caribbean	4,067	4,474	4,435	5,552	25.2	24.1	36.5	21,920	20,439	21,729	24,181	11.3	18.3	10.3
Aruba	67	97	74	116	56.8	19.6	73.1	173	231	300	325	8.3	40.7	87.9
Bonaire	0	0	5	24	380.0	-	-	0	0	21	49	133.3	-	-
Cuba	64	41	87	37	-57.5	-9.8	-42.2	389	351	403	236	-41.4	-32.8	-39.3
Curacao	232	166	239	279	16.7	68.1	20.3	444	610	902	739	-18.1	21.1	66.4
Dominican Republic	77	88	94	137	45.7	55.7	77.9	540	569	491	681	38.7	19.7	26.1
Guadelope	13	15	10	17	70.0	13.3	30.8	44	54	59	110	86.4	103.7	150.0
Haiti	79	178	102	48	-52.9	-73.0	-39.2	316	492	482	285	-40.9	-42.1	-9.8
Puerto Rico	107	153	128	225	75.8	47.1	110.3	909	1,018	733	1,068	45.7	4.9	17.5
St. Maarten	81	82	127	200	57.5	143.9	146.9	308	306	396	471	18.9	53.9	52.9
All other Caribbean	91	62	76	86	13.2	38.7	-5.5	321	320	310	455	46.8	42.2	41.7
Other Caribbean	811	882	942	1,169	24.1	32.5	44.1	3,444	3,951	4,097	4,419	7.9	11.8	28.3
TOTAL CARIBBEAN	4,878	5,356	5,377	6,721	25.0	25.5	37.8	25,364	24,390	25,826	28,600	10.7	17.3	12.8
OTHER COUNTRIES														
African Countries	141	265	141	244	73.0	-7.9	73.0	819	726	623	769	23.4	5.9	-6.1
Isreal	117	60	101	70	-30.7	16.7	-40.2	611	390	465	496	6.7	27.2	-18.8
Saudi Arabia	7	25	10	9	-10.0	-64.0	28.6	25	33	24	22	-8.3	-33.3	-12.0
Turkey	43	13	12	21	75.0	61.5	-51.2	149	77	81	113	39.5	46.8	-24.2
Other Middle East	26	76	66	39	-40.9	-48.7	50.0	189	210	198	190	-4.0	-9.5	0.5
India & Pakistan	56	45	61	68	11.5	51.1	21.4	494	334	342	373	9.1	11.7	-24.5
Japan	538	394	357	376	5.3	-4.6	-30.1	3,855	2,676	2,233	2,789	24.9	4.2	-27.7
China	41	44	62	51	-17.7	15.9	24.4	302	285	330	306	-7.3	7.4	1.3
Taiwan	11	9	3	4	33.3	-55.6	-63.6	49	45	47	30	-36.2	-33.3	-38.8
Korea	26	25	8	20	150.0	-20.0	-23.1	168	151	104	136	30.8	-9.9	-19.0
Philippines	26	48	122	52	-57.4	8.3	100.0	297	367	785	328	-58.2	-10.6	10.4
Singapore	25	21	15	14	-6.7	-33.3	-44.0	95	65	72	68	-5.6	4.6	-28.4
Other Asia	27	36	40	18	-55.0	-50.0	-33.3	224	148	169	203	20.1	37.2	-9.4
Australia	111	233	224	160	-28.6	-31.3	44.1	850	890	1,493	890	-40.4	0.0	4.7
New Zealand	42	38	238	24	-89.9	-36.8	-42.9	177	212	354	166	-53.1	-21.7	-6.2
All Other Ctries	11	16	31	0	-	-	-	44	55	34	20	-41.2	-63.6	-54.5
Total	1,248	1,348	1,491	1,170	-21.5	-13.2	-6.3	8,348	6,664	7,354	6,899	-6.2	3.5	-17.4
GRAND TOTAL	131,141	137,688	144,039	160,231	11.2	16.4	22.2	840,183	771,703	822,354	902,569	9.8	17.0	7.4

STOPOVER VISITORS BY MARKET SHARE

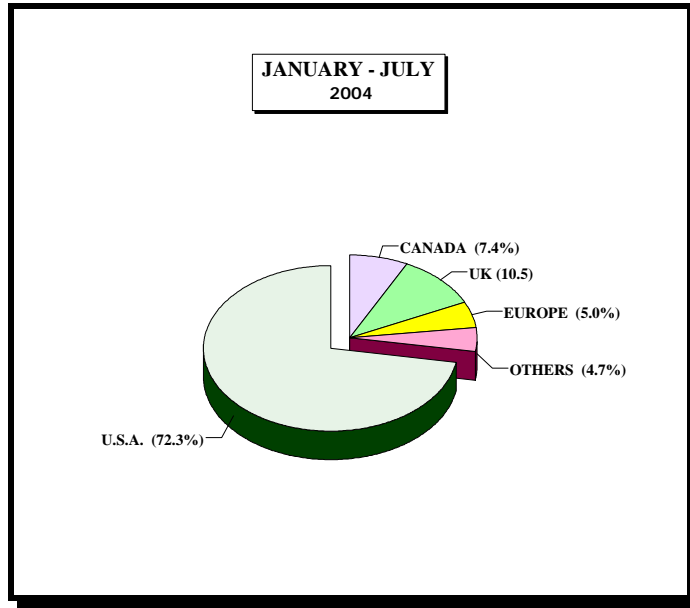


Fig. 2

Country	July 2004	% Share	Jan. - Jul. 2004	% Share	Jan. - Jul. 2003	% Share	%Change 2004/03
U.S.A	117,728	73.5%	652,728	72.3%	601,425	73.1%	8.5%
CANADA	8,395	5.2%	66,934	7.4%	59,179	7.2%	13.1%
U.K.	17,585	11.0%	95,048	10.5%	83,454	10.1%	13.9%
EUROPE	7,159	4.5%	45,535	5.0%	39,162	4.8%	16.3%
OTHERS	9,364	5.8%	42,324	4.7%	39,134	4.8%	8.2%
Total	160,231	100.0%	902,569	100.0%	822,354	100.0%	9.8%

TABLE 3

<u>AVERAGE LENGTH OF STAY (Nights)</u>				
<u>FOREIGN NATIONALS</u>				
	All Types of Accommodation		Hotel	
	2003	2004	2003	2004
January	10.1	9.8	6.6	6.7
February	8.8	8.9	6.3	6.5
March	8.5	8.6	6.1	6.2
April	8.9	8.7	6.2	6.1
May	9.2	8.7	5.9	6.3
June	10.5	10.2	6.2	6.3
July	11.5	10.7	6.7	6.7
Jan. - July	9.3	9.4	6.2	6.4

Note: LENGTH OF STAY IS BASED ON INTENDED LENGTH OF STAY

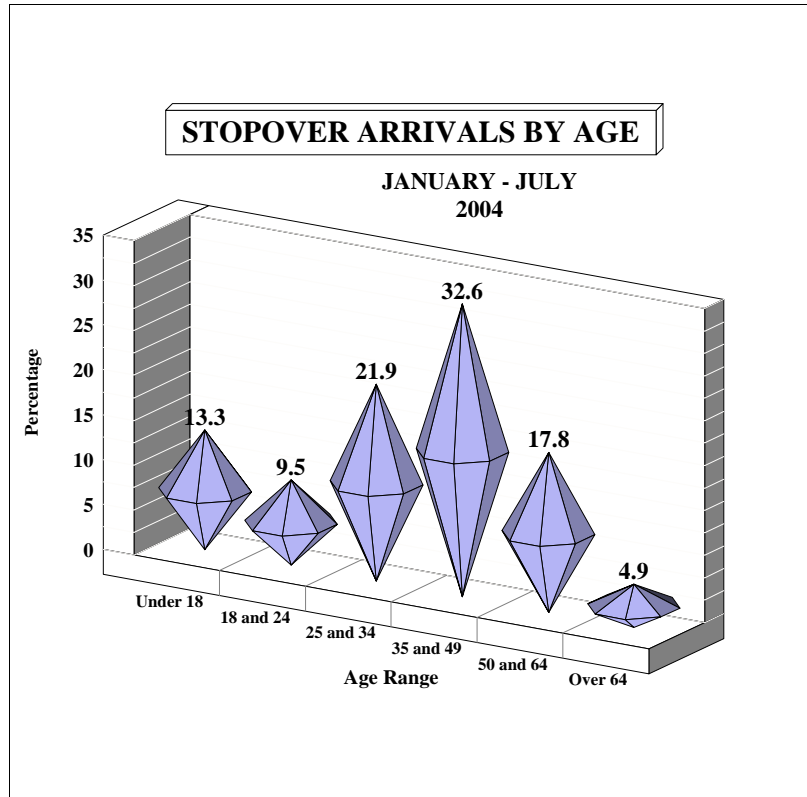


Fig. 3

AGE DISTRIBUTION OF STOPOVER ARRIVALS

Age	JULY		JAN. - JUL.		JAN. - JUL.		%Change 2004/03
	2004	% Share	2004	% Share	2003	% Share	
Under 18	33,251	20.8	120,174	13.3	104,129	12.7	15.4%
18 and 24	15,740	9.8	86,027	9.5	79,686	9.7	8.0%
25 and 34	33,805	21.1	197,458	21.9	187,910	22.9	5.1%
35 and 49	47,688	29.8	294,489	32.6	268,760	32.7	9.6%
50 and 64	23,208	14.5	160,578	17.8	143,919	17.5	11.6%
Over 64	6,539	4.1	43,843	4.9	37,950	4.6	15.5%
Total	160,231	100.0	902,569	100.0	822,354	100.0	9.8%

TABLE 4**CRUISE PASSENGER ARRIVALS BY MONTH AND PORT OF CALL
JANUARY - JULY 2004**

	MONTEGO BAY		% Change 2004/03		OCHO RIOS		% Change 2004/03		2004 TOTAL		2003 TOTAL		% Change 2004/03	
	CALLS	PAX	CALLS	PAX	CALLS	PAX	CALLS	PAX	CALLS	PAX	CALLS	PAX	CALLS	PAX
January	22	34,283	-12.0%	-21.8%	42	89,072	20.0%	18.8%	67	124,650	60	118,834	11.7%	4.9%
February	24	37,643	0.0%	-3.5%	31	77,443	-11.4%	0.1%	56	115,351	60	116,451	-6.7%	-0.9%
March	23	41,704	-14.8%	8.2%	34	86,847	-17.1%	-3.4%	58	129,266	69	128,758	-15.9%	0.4%
April	17	35,901	-10.5%	6.8%	29	73,843	-3.3%	-0.8%	46	109,744	49	108,009	-6.1%	1.6%
Jan. - Apr.	86	149,531	-9.5%	-3.5%	136	327,205	-3.5%	3.3%	227	479,011	238	472,052	-4.6%	1.5%
May	5	16,052	-28.6%	-5.1%	18	48,372	0.0%	2.0%	23	64,424	25	64,350	-8.0%	0.1%
June	8	24,499	33.3%	72.4%	18	51,928	5.9%	3.0%	26	76,427	24	64,812	8.3%	17.9%
July	5	17,453	0.0%	-0.9%	17	50,750	-22.7%	-23.7%	22	68,203	27	84,154	-18.5%	-19.0%
May - Jul.	18	58,004	0.0%	19.0%	53	151,050	-7.0%	-8.1%	71	209,054	76	213,316	-6.6%	-2.0%
Jan. - Jul.	104	207,535	-8.0%	1.9%	189	478,255	-4.5%	-0.6%	298	688,065	314	685,368	-5.1%	0.4%

- * Note:
1. During the month of January three Cruise Ship calls with 1,668 Cruise passengers visited two ports.
 2. Included in the total Cruise passengers for the month of January, 3 calls with 1,295 passengers visited Port Antonio.
 3. During the month of February 1 Cruise Ship call with 1,174 Cruise passengers visited two ports.
 4. Included in the total Cruise passengers for the month of February, 1 calls with 265 passengers visited Port Antonio.
 5. Included in the total Cruise passengers for the month of March, 1 call with 715 passengers visited Port Antonio.
 6. During the month of April 1 Cruise Ship call with 1,181 Cruise passengers visited two ports.

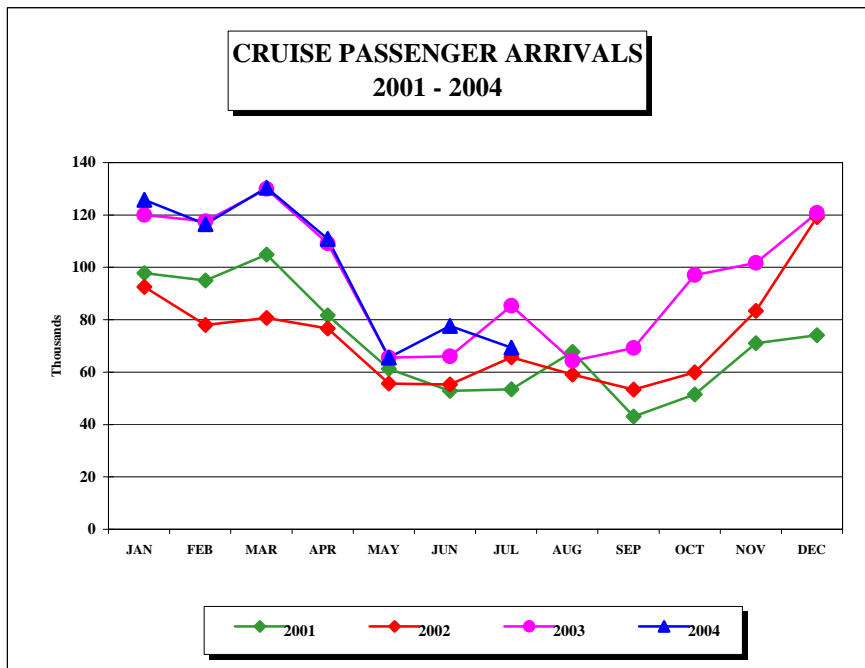


FIG. 4

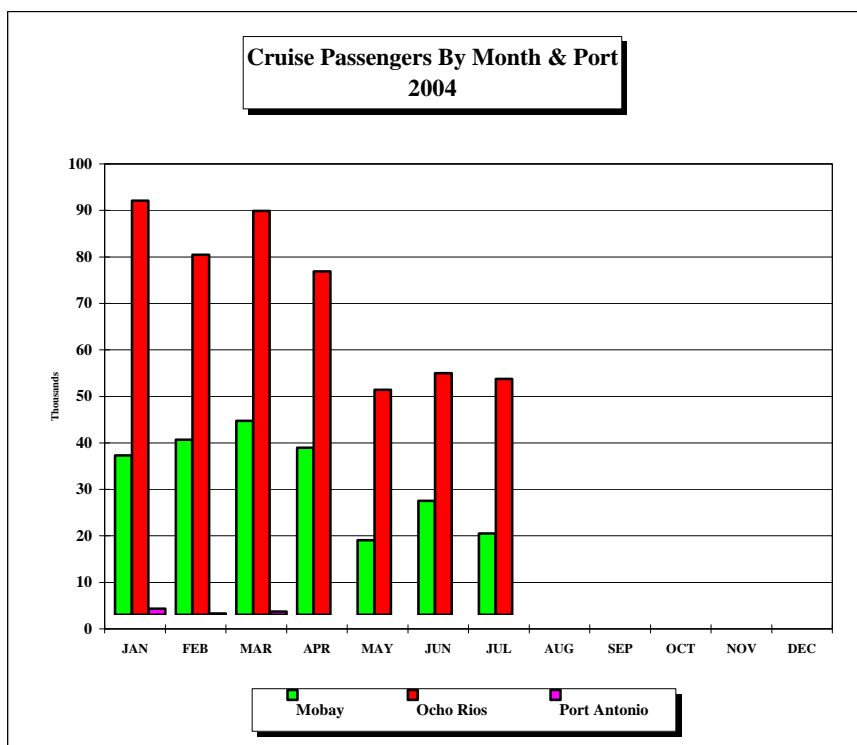


FIG. 4a

**TABLE 5A
LANDED TOURISTS BY SCHEDULED & CHARTERED AIRLINES**

	<u>JULY 2004</u>			<u>JANUARY - JULY 2004</u>		
	<u>SCHEDULED AIRLINES</u>	<u>CHARTERED AIRLINES</u>	<u>TOTAL STOPOVERS</u>	<u>SCHEDULED AIRLINES</u>	<u>CHARTERED AIRLINES</u>	<u>TOTAL STOPOVERS</u>
U.S.A.						
<u>NORTHEAST (NEW YORK)</u>						
Connecticut	3,498	0	3,498	17,137	188	17,325
Delaware	597	0	597	3,562	18	3,580
Maine	120	0	120	2,335	23	2,358
Maryland	5,158	4	5,162	24,944	325	25,269
Massachusetts	2,508	1	2,509	22,196	433	22,629
New Hampshire	261	0	261	3,441	72	3,513
New Jersey	8,064	6	8,070	41,246	335	41,581
New York	23,449	50	23,499	106,802	1,472	108,274
Pennsylvania	6,549	7	6,556	37,637	659	38,296
Rhode Island	384	0	384	2,807	25	2,832
Vermont	70	0	70	1,390	21	1,411
Virginia	2,466	13	2,479	14,119	294	14,413
Washington D.C.	676	1	677	3,252	45	3,297
West Virginia	240	0	240	1,464	68	1,532
Total	<u>54,040</u>	<u>82</u>	<u>54,122</u>	<u>282,332</u>	<u>3,978</u>	<u>286,310</u>
<u>MIDWEST (CHICAGO)</u>						
Illinois	2,849	1,454	4,303	20,490	13,836	34,326
Indiana	1,229	101	1,330	7,569	1,607	9,176
Iowa	365	24	389	4,117	1,703	5,820
Kansas	556	31	587	3,232	374	3,606
Kentucky	841	3	844	3,945	200	4,145
Michigan	1,814	58	1,872	15,268	5,065	20,333
Minnesota	581	4	585	9,762	5,315	15,077
Missouri	1,041	1,382	2,423	5,454	9,277	14,731
Nebraska	377	4	381	3,069	90	3,159
North Dakota	48	2	50	1,011	296	1,307
Ohio	1,984	11	1,995	12,345	1,099	13,444
South Dakota	97	10	107	1,187	161	1,348
Wisconsin	617	216	833	11,832	8,998	20,830
Total	<u>12,399</u>	<u>3,300</u>	<u>15,699</u>	<u>99,281</u>	<u>48,021</u>	<u>147,302</u>

TABLE 5A
LANDED TOURISTS BY SCHEDULED & CHARTERED AIRLINES

JULY 2004

JANUARY - JULY 2004

	SCHEDULED AIRLINES	CHARTERED AIRLINES	TOTAL STOPOVERS	SCHEDULED AIRLINES	CHARTERED AIRLINES	TOTAL STOPOVERS
<u>SOUTH (MIAMI)</u>						
Alabama	876	3	879	4,814	17	4,831
Arkansas	310	74	384	1,960	174	2,134
Florida	15,583	10	15,593	76,026	154	76,180
Georgia	6,449	8	6,457	28,458	63	28,521
Louisiana	1,043	68	1,111	3,986	142	4,128
Mississippi	427	5	432	2,198	26	2,224
North Carolina	2,514	2	2,516	12,710	183	12,893
Oklahoma	320	452	772	2,052	1,160	3,212
South Carolina	1,131	0	1,131	5,492	43	5,535
Tennessee	1,639	8	1,647	8,264	95	8,359
Texas	4,737	3,064	7,801	19,927	6,043	25,970
Total	<u>35,029</u>	<u>3,694</u>	<u>38,723</u>	<u>165,887</u>	<u>8,100</u>	<u>173,987</u>

WEST (LOS ANGELES)

Alaska	26	0	26	215	12	227
Arizona	589	10	599	3,213	71	3,284
California	6,407	18	6,425	27,449	189	27,638
Colorado	525	153	678	3,645	1,544	5,189
Hawaii	27	1	28	175	5	180
Idaho	49	2	51	566	4	570
Montana	56	0	56	574	12	586
Nevada	289	5	294	1,537	31	1,568
New Mexico	109	12	121	680	31	711
Oregon	270	1	271	1,412	18	1,430
Utah	153	0	153	918	13	931
Washington	426	1	427	2,437	60	2,497
Wyoming	47	8	55	258	60	318
Total	<u>8,973</u>	<u>211</u>	<u>9,184</u>	<u>43,079</u>	<u>2,050</u>	<u>45,129</u>
TOTAL U.S.A.	<u>110,441</u>	<u>7,287</u>	<u>117,728</u>	<u>590,579</u>	<u>62,149</u>	<u>652,728</u>

TABLE 5A
LANDED TOURISTS BY SCHEDULED & CHARTERED AIRLINES

	JULY 2004			JANUARY - JULY 2004		
	SCHEDULED AIRLINES	CHARTERED AIRLINES	TOTAL STOPOVERS	SCHEDULED AIRLINES	CHARTERED AIRLINES	TOTAL STOPOVERS
<u>CANADA (TORONTO)</u>						
Alberta	269	3	272	4,015	70	4,085
British Columbia	181	7	188	1,987	52	2,039
Manitoba	72	8	80	1,778	56	1,834
New Brunswick	17	2	19	771	31	802
Newfoundland	26	3	29	353	39	392
Nova Scotia	48	1	49	1,394	39	1,433
Ontario	5,844	1,275	7,119	32,846	14,833	47,679
P.E. Island	0	0	0	143	0	143
Quebec	541	48	589	5,460	2,061	7,521
Saskatchewan	30	0	30	837	14	851
Other Canada	20	0	20	133	22	155
Total	7,048	1,347	8,395	49,717	17,217	66,934
<u>LONDON OFFICE</u>						
<u>Northern Europe</u>						
U.K.	12,337	5,248	17,585	60,774	34,274	95,048
Denmark	106	2	108	431	11	442
Finland	21	1	22	257	8	265
Norway	74	0	74	450	12	462
Sweden	59	3	62	669	21	690
<u>Southern Europe</u>						
Greece	28	0	28	119	11	130
Italy	1,140	972	2,112	5,328	8,538	13,866
Portugal	10	80	90	168	382	550
Spain	100	1,400	1,500	685	4,518	5,203
<u>Western Europe</u>						
Austria	217	1	218	1,234	519	1,753
Belgium	128	370	498	941	1,492	2,433
France	259	33	292	1,634	181	1,815
Germany	1,149	10	1,159	10,708	121	10,829
Luxemburg	7	2	9	63	16	79
Netherlands	542	8	550	2,184	81	2,265
Switzerland	232	4	236	1,136	1,253	2,389
<u>Central/East Europe</u>						
Czechoslovakia	26	0	26	260	11	271
Hungary	6	1	7	114	8	122
Poland	36	2	38	478	8	486
Russia	53	1	54	613	15	628
Other Europe	72	4	76	645	212	857
Total	16,602	8,142	24,744	88,891	51,692	140,583

TABLE 5A
LANDED TOURISTS BY SCHEDULED & CHARTERED AIRLINES

	<u>JULY 2004</u>			<u>JANUARY - JULY 2004</u>		
	SCHEDULED AIRLINES	CHARTERED AIRLINES	TOTAL STOPOVERS	SCHEDULED AIRLINES	CHARTERED AIRLINES	TOTAL STOPOVERS
<u>OTHER COUNTRIES</u>						
<u>CENTRAL AMERICA</u>						
Mexico	155	513	668	977	716	1,693
Belize	68	0	68	321	0	321
Costa Rica	42	1	43	327	34	361
El Salvador	5	0	5	58	62	120
Guatemala	11	0	11	171	89	260
Honduras	13	0	13	128	37	165
Nicaragua	6	0	6	32	11	43
Panama	79	0	79	586	0	586
Total	379	514	893	2,600	949	3,549
<u>SOUTH AMERICA</u>						
Argentina	41	0	41	315	1	316
Bolivia	0	0	0	26	0	26
Brazil	75	1	76	535	5	540
Chile	33	0	33	287	2	289
Colombia	30	0	30	184	0	184
Ecuador	10	0	10	58	1	59
Guyana	190	0	190	1,001	1	1,002
Paraguay	2	0	2	13	0	13
Peru	27	0	27	173	1	174
Surinam	73	0	73	189	1	190
Uruguay	19	0	19	72	0	72
Venezuela	79	0	79	408	2	410
Other South America	0	0	0	1	0	1
Total	579	1	580	3,262	14	3,276
Total Latin America	958	515	1,473	5,862	963	6,825

TABLE 5A
LANDED TOURISTS BY SCHEDULED & CHARTERED AIRLINES

	<u>JULY 2004</u>			<u>JANUARY - JULY 2004</u>		
	SCHEDULED AIRLINES	CHARTERED AIRLINES	TOTAL STOPOVERS	SCHEDULED AIRLINES	CHARTERED AIRLINES	TOTAL STOPOVERS
<u>CARIBBEAN</u>						
Antigua	274	0	274	1,115	1	1,116
Bahamas	403	0	403	1,773	4	1,777
Barbados	845	0	845	3,494	1	3,495
Bermuda	300	0	300	1,257	2	1,259
British Virgin Is.	126	0	126	499	0	499
Cayman Is.	1,557	1	1,558	7,999	4	8,003
Dominica	62	0	62	204	0	204
Grenada	76	0	76	345	1	346
Monsterrat	26	0	26	79	0	79
St. Kitts/Nevis/Anguilla	158	0	158	600	0	600
St. Lucia	346	0	346	1,156	0	1,156
St. Vincent	128	0	128	404	1	405
Turks & Caicos Is.	147	0	147	610	0	610
Trinidad & Tobago	1,103	0	1,103	4,629	3	4,632
Comm. Caribbean	5,551	1	5,552	24,164	17	24,181
Aruba	116	0	116	325	0	325
Bonaire	24	0	24	49	0	49
Cuba	37	0	37	232	4	236
Curacao	279	0	279	739	0	739
Dominican Republic	137	0	137	677	4	681
Guadelope	16	1	17	109	1	110
Haiti	48	0	48	285	0	285
Puerto Rico	225	0	225	1,065	3	1,068
St. Maarten	200	0	200	471	0	471
All other Caribbean	86	0	86	455	0	455
Other Caribbean	1,168	1	1,169	4,407	12	4,419
TOTAL CARIBBEAN	6,719	2	6,721	28,571	29	28,600
<u>OTHER COUNTRIES</u>						
African Countries	243	1	244	751	18	769
Isreal	67	3	70	490	6	496
Saudi Arabia	9	0	9	22	0	22
Turkey	21	0	21	104	6	110
Other Middle East	37	2	39	176	17	193
India & Pakistan	65	3	68	362	11	373
Japan	376	0	376	2,784	5	2,789
China	51	0	51	302	4	306
Taiwan	3	1	4	29	1	30
Korea	20	0	20	134	2	136
Philippines	52	0	52	328	0	328
Singapore	14	0	14	67	1	68
Other Asia	18	0	18	201	2	203
Australia	160	0	160	883	7	890
New Zealand	24	0	24	163	3	166
All Other Ctries	0	0	0	20	0	20
Total	1,160	10	1,170	6,816	83	6,899
GRAND TOTAL	142,928	17,303	160,231	770,436	132,133	902,569

Stopover Arrivals
By Intended Resort Area of Stay

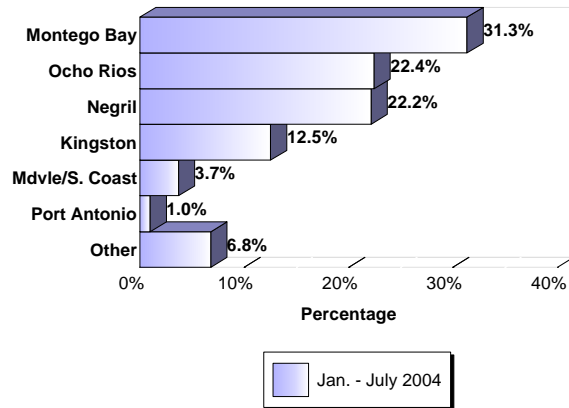


Fig. 5

STOPOVER ARRIVALS BY INTENDED AREA OF STAY

Area	JULY		JAN.- JUL.		JAN.- JUL.		%Change 2004/03
	2004	%Share	2004	%Share	2003	%Share	
Montego Bay	46,499	29.0%	282,945	31.3%	261,202	31.8%	8.3%
Ocho Rios	34,209	21.3%	202,387	22.4%	181,689	22.1%	11.4%
Negril	31,042	19.4%	200,223	22.2%	173,230	21.1%	15.6%
Kingston	23,065	14.4%	112,885	12.5%	110,122	13.4%	2.5%
Mdvle/S. Coast	8,301	5.2%	33,528	3.7%	30,120	3.7%	11.3%
Port Antonio	2,267	1.4%	9,194	1.0%	8,395	1.0%	9.5%
Other	14,848	9.3%	61,407	6.8%	57,596	7.0%	6.6%
Total	160,231	100.0%	902,569	100.0%	822,354	100.0%	9.8%