

MONTHLY STATISTICAL REPORT

Volume X111, Issue V11
July 2003

TOURIST (Stopovers)

Stopover arrivals in July 2003 were **144,039**, an increase of **5%** over the **137,688** recorded for July 2002. This figure was the highest number recorded in any given month since the **143,282** visitors recorded for March 2001.

Cumulatively, stopovers for the January to July period increased by **7%**. There was a total of **822,354** stopovers for the period compared to **771,703** in 2002.

United States

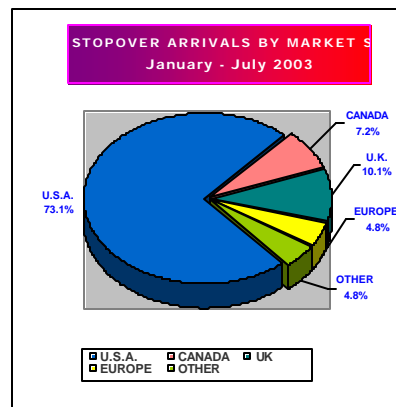
Stopover arrivals from the United States market increased by approximately **4%** in July with a total of **107,465** visitors compared to the **102,904** visitors who came in July 2002. While the Northeast and the West recorded increased of **15%** and **1%** respectively, the Midwest and the South declined.

For the January to July period the US market increased by **5%**. Total visitors from this market for the period was **601,425** compared to **574,527** for the corresponding period in 2002. Two of the main marketing regions recorded increased. The Northeast increased by **7%**, and the Midwest by **9%**. However, the South declined by **1%** and the West by less than **1%**.

Canada

In July, the Canadian market declined by **15%** with a total of **7,175** stopovers compared to **8,452** stopovers who came in July 2002. The leading province Ontario declined by

17%, and the second most important visitor-producing province Quebec also declined by **8%**. Cumulatively, the Canadian market declined by **4%** in the January to July period with a total of **59,179** stopovers compared to **61,866** in 2002. With the exception of Prince Edward Island, all the other provinces recorded declines against their performances in 2002.



Europe

The European market continued to show remarkable improvement when it recorded a **18%** increase in July 2003. The market provided a total of **21,608** stopover visitors compared to the **18,355** recorded in July 2002 and was also up against the **18,225** stopovers who came in July 2001. While the United Kingdom increased by **20%**, Germany declined by **6%**. With the exception of Switzerland, all the main European country markets recorded increases. Belgium, Austria, Spain and Italy recorded increases despite from relatively small bases.

Cumulatively, for the January to July period, the European market increased by **25%**. Total stopovers for

the period was **122,616** compared to **97,871** in 2002. Both the United Kingdom and Germany recorded increases. The United Kingdom with a total of **83,454** stopovers recorded an increase of **21%** while Germany with **9,320** visitors recorded an increase of **15%**.

Latin America

The Latin American market declined by **26%** in July with a total of **1,051** stopovers compared to **1,426** in July 2002. While Argentina increased by **109%**, the other four leading countries recorded declines. Brazil declined by **(32%)**, Mexico **(7%)**, Chile **(50%)**, and Colombia **(89%)**.

For the January to July period, the Latin American market declined by **10%** with a total of **6,687** visitors compared to **7,403** for the corresponding period in 2002.

The highest number of stopover visitors to Jamaica in a given month was recorded in July 2003. A total of 144,039 visitors were reported for the month reflecting a 5% increase over the same period in 2002.

The Caribbean

Visitors to Jamaica from the Caribbean region increased by **1%** in July. A total of **5,249** visitors from other Caribbean countries visited Jamaica, up from **5,203** in July 2002.

The major Caribbean countries which provided visitors to Jamaica in July were: the Cayman Islands (**1,172**), Trinidad and Tobago (**734**), Barbados (**675**), the Bahamas (**371**), Antigua (**339**), Bermuda (**333**), and St. Lucia (**211**). While Barbados, Bermuda, and Antigua recorded increases in July, all the other major Caribbean countries recorded declines against July 2002.

Cumulatively, the Caribbean stopover arrivals to Jamaica in the January to July period increased by **7%** moving from **23,372** in 2002 to **25,093** in 2003. In the period under review, the top Caribbean countries that provided stopover visitors to Jamaica were the Cayman Islands with **6,765**, Trinidad and Tobago with **4,256**, Barbados with **3,122** and the Bahamas with **1,711**.

Japan

The Japanese market declined by **9%** in July with a total of **357** stopovers compared to **394** in July 2002 but was down by **34%** against the **538** for the corresponding period in 2001.

For the January to July period, Japan declined by **17%** with **2,233** visitors compared to **2,676** in 2002.

Other Countries

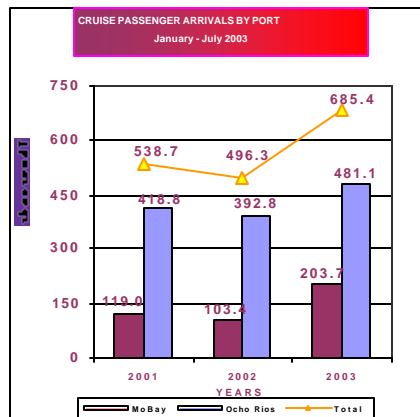
Of the other countries, Australia with a total of **1,493** stopovers in January to July period recorded an increase of **68%** against the **890** who came in January to July 2002.

Market Share

The market share of stopover visitors for the January to July period were as follows:

USA **73.1%**; Canada **7.2%**; UK **10.1%**; Continental Europe **4.8%** the Caribbean **3.1%**; Latin America **0.8%**; Japan **0.3%** and Other Countries **0.6%**.

Cruise Passengers



A total of **84,154** cruise passengers visited Jamaica in July 2003. This represents a **30%** increase against the **64,512** recorded for July 2002. Cumulatively, a total of **685,368** cruise passengers visited Jamaica in the January to July period, a **38%** increase against the **496,277** recorded for the corresponding period in 2002.

A total of **66,546** cruise passengers visited the port of Ocho Rios in July, an increase of **28%** over the **51,865** recorded for July 2002. For the January to July period cruise passenger arrivals to the port of Ocho Rios was **481,129** an increase of **23%** against the **392,797** for the corresponding period in 2002.

Montego Bay recorded a total of **17,608** cruise passengers for the month of July 2003, an increase of some **39%** against the **12,647** recorded for July 2002. Cumulatively, for the January to July period, cruise passenger arrivals to Montego Bay was **203,721** an increase of **97%** against the **103,408** recorded for the same period in 2002.

Length of Stay

The average length of stay of stopovers in July was **11.5** nights compared to **11.6** nights for July 2002. The average length of stay in hotels was **6.7** nights against the **6.6** nights in July 2002. Cumulatively, the average length of stay for the January to July period was **9.3** nights compared to **9.4** nights recorded for the similar period in 2002.

First and Repeat Visitors

Approximately **53%** or **70,593** of the **133,578** foreign nationals who visited Jamaica in July were first-time visitors and the other **47%** or **62,985** were repeat guests.

Cumulatively, in the January to July period, some **56%** of the **774,523** Foreign Nationals who visited the island were first-time guests and **44%** were repeat guests.

TABLE 1**TOURIST ARRIVALS**

January - July

2003

Month	<----- Stopovers ----->						Total		
	Foreign Nationals	+/- 2003/02	+/- 2003/01	Non-Resident Jamaicans	+/- 2003/02	+/- 2003/01	Stopover Arrivals	+/- 2003/02	+/- 2003/01
January	95,875	12.6%	-0.9%	5,431	9.0%	5.2%	101,306	12.4%	-0.6%
February	106,440	11.7%	-1.0%	5,018	6.0%	-14.3%	111,458	11.4%	-1.7%
March	124,143	0.4%	-8.9%	5,342	-18.1%	-23.1%	129,485	-0.5%	-9.6%
April	104,597	11.0%	-10.9%	7,377	14.6%	-10.3%	111,974	11.2%	-10.9%
Jan.-Apr.	431,055	8.2%	-5.9%	23,168	2.2%	-11.5%	454,223	7.9%	-6.2%
May	95,809	3.4%	-2.3%	6,212	-7.1%	-7.7%	102,021	2.7%	-2.6%
June	114,081	7.6%	2.7%	7,990	4.2%	-12.0%	122,071	7.4%	1.6%
July	133,578	5.5%	9.9%	10,461	-5.6%	9.3%	144,039	4.6%	9.8%
May.-July	343,468	5.6%	3.9%	24,663	-3.0%	-2.8%	368,131	5.0%	3.4%
Jan.-July	774,523	7.0%	-1.8%	47,831	-0.6%	-7.2%	822,354	6.6%	-2.1%

STOPOVER ARRIVALS FOREIGN NATIONALS

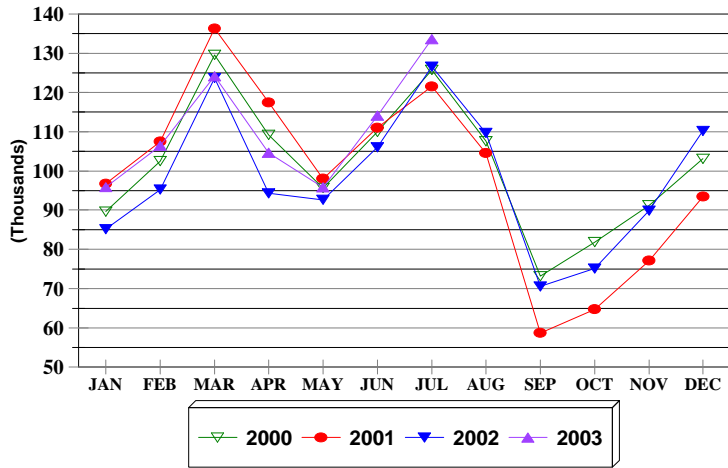


FIG. 1

STOPOVER ARRIVALS NON-RESIDENT JAMAICANS

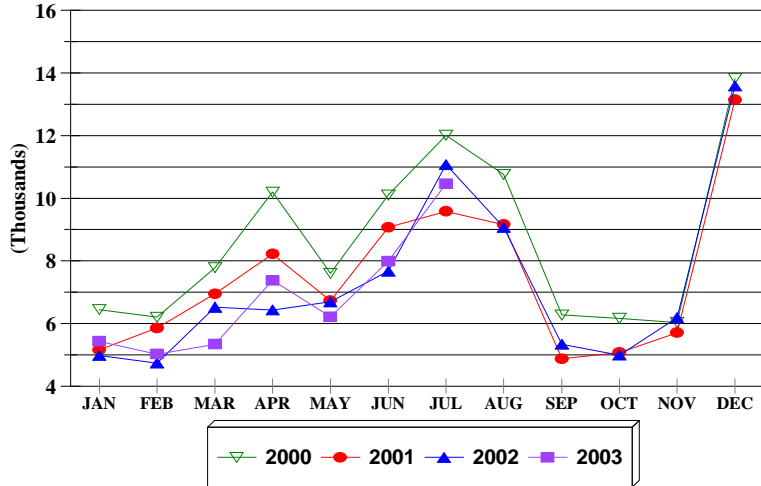


FIG. 1a

TABLE 1.1

First & Repeat Visit to Jamaica

FOREIGN NATIONALS

2003

	Arrivals				TOTAL	% SHARE	
	First Visit	+/-	Repeat Visit	+/-		First Visit	Repeat Visit
Jan.	51,389	18.9	44,486	6.2	95,875	53.6	46.4
Feb.	56,644	12.2	49,796	11.1	106,440	53.2	46.8
Mar.	74,063	2.2	50,080	-2.3	124,143	59.7	40.3
Apr.	57,325	17.3	47,272	4.1	104,597	54.8	45.2
Jan.-Apr.	239,421	11.4	191,634	4.5	431,055	55.5	44.5
May	54,403	11.0	41,406	-5.0	95,809	56.8	43.2
Jun.	65,139	5.4	48,942	10.7	114,081	57.1	42.9
Jul.	70,593	2.4	62,985	9.2	133,578	52.8	47.2
May-Jul.	190,135	5.8	153,333	5.4	343,468	55.4	44.6
Jan.-Jul.	429,556	8.8	344,967	4.9	774,523	55.5	44.5

TABLE 1.2

**STOPOVER ARRIVALS BY MARKET REGION
AND MONTH OF ARRIVAL 2003**

	U.S.A.				Canada	U.K. Europe	Latin America	Caribbean	Asia	Other Countries	Total
	Northeast	Mid-West	South	West							
January	28,497	21,351	14,638	4,110	11,589	16,286	1,087	2,821	635	292	101,306
February	35,006	25,007	14,940	4,002	11,506	16,812	777	2,594	578	236	111,458
March	40,262	29,316	21,505	5,449	10,779	17,088	892	3,197	695	302	129,485
April	37,597	17,405	19,687	5,514	7,937	17,523	1,041	4,324	532	414	111,974
Jan.-Apr.	141,362	93,079	70,770	19,075	41,811	67,709	3,797	12,936	2,440	1,244	454,223
May	30,120	14,016	25,523	5,353	5,276	16,282	968	3,232	449	802	102,021
June	34,991	16,810	35,215	7,646	4,917	17,017	871	3,676	522	406	122,071
July	48,733	15,071	35,202	8,459	7,175	21,608	1,051	5,249	668	823	144,039
May - Jul.	113,844	45,897	95,940	21,458	17,368	54,907	2,890	12,157	1,639	2,031	368,131
Jan. - Jul.	255,206	138,976	166,710	40,533	59,179	122,616	6,687	25,093	4,079	3,275	822,354
+/- %	7.4%	8.6%	-1.0%	-0.1%	-4.3%	25.3%	-9.7%	7.4%	0.2%	26.3%	6.6%

TABLE 2

TOTAL STOPOVER ARRIVALS BY PERMANENT RESIDENCE

	<u>JULY</u>							<u>JANUARY - JULY</u>						
	<u>2000</u>	<u>2001</u>	<u>2002</u>	<u>2003</u>	<u>% C h a n g e</u>			<u>2000</u>	<u>2001</u>	<u>2002</u>	<u>2003</u>	<u>% C h a n g e</u>		
					2003/02	2003/01	2003/00					2003/02	2003/01	2003/00
U.S.A.														
<u>NORTHEAST (NEW YORK)</u>														
Connecticut	2,178	2,375	2,385	2,652	11.2	11.7	21.8	13,909	15,469	13,761	14,654	6.5	-5.3	5.4
Delaware	413	479	490	488	-0.4	1.9	18.2	3,192	3,667	2,942	2,998	1.9	-18.2	-6.1
Maine	97	121	87	131	50.6	8.3	35.1	1,653	1,962	1,591	1,635	2.8	-16.7	-1.1
Maryland	3,779	3,756	4,262	4,991	17.1	32.9	32.1	19,741	21,891	20,956	22,704	8.3	3.7	15.0
Massachusetts	2,006	2,288	2,087	2,380	14.0	4.0	18.6	18,472	22,463	18,273	18,980	3.9	-15.5	2.8
New Hampshire	165	231	156	224	43.6	-3.0	35.8	2,783	3,622	2,704	2,838	5.0	-21.6	2.0
New Jersey	5,805	5,564	5,895	6,878	16.7	23.6	18.5	33,483	36,897	33,074	37,113	12.2	0.6	10.8
New York	18,674	17,189	19,140	21,530	12.5	25.3	15.3	99,915	102,499	93,194	98,937	6.2	-3.5	-1.0
Pennsylvania	4,857	5,135	4,820	5,681	17.9	10.6	17.0	30,464	34,366	31,782	34,482	8.5	0.3	13.2
Rhode Island	158	229	244	282	15.6	23.1	78.5	1,876	2,208	1,971	2,221	12.7	0.6	18.4
Vermont	64	76	41	48	17.1	-36.8	-25.0	1,112	1,354	895	1,022	14.2	-24.5	-8.1
Virginia	2,067	1,853	2,105	2,502	18.9	35.0	21.0	12,815	13,310	12,412	13,248	6.7	-0.5	3.4
Washington D.C.	595	462	519	764	47.2	65.4	28.4	3,064	3,293	2,942	3,332	13.3	1.2	8.7
West Virginia	188	183	233	182	-21.9	-0.5	-3.2	1,203	1,397	1,088	1,042	-4.2	-25.4	-13.4
Total	41,046	39,941	42,464	48,733	14.8	22.0	18.7	243,682	264,398	237,585	255,206	7.4	-3.5	4.7
<u>MIDWEST (CHICAGO)</u>														
Illinois	5,267	4,370	4,404	4,197	-4.7	-4.0	-20.3	37,323	34,759	32,020	33,453	4.5	-3.8	-10.4
Indiana	1,262	1,125	1,093	1,214	11.1	7.9	-3.8	9,369	8,578	8,057	9,190	14.1	7.1	-1.9
Iowa	415	407	461	447	-3.0	9.8	7.7	4,399	4,890	4,862	5,334	9.7	9.1	21.3
Kansas	567	544	537	472	-12.1	-13.2	-16.8	3,374	3,512	2,788	2,808	0.7	-20.0	-16.8
Kentucky	831	581	898	746	-16.9	28.4	-10.2	3,722	3,582	4,056	3,999	-1.4	11.6	7.4
Michigan	2,357	1,942	1,582	1,661	5.0	-14.5	-29.5	20,399	21,211	16,621	19,713	18.6	-7.1	-3.4
Minnesota	660	593	706	593	-16.0	0.0	-10.2	14,806	14,356	12,902	14,698	13.9	2.4	-0.7
Missouri	2,676	1,937	2,239	2,455	9.6	26.7	-8.3	12,927	12,149	11,962	13,721	14.7	12.9	6.1
Nebraska	334	315	334	357	6.9	13.3	6.9	2,405	3,008	2,478	2,819	13.8	-6.3	17.2
North Dakota	45	57	68	35	-48.5	-38.6	-22.2	765	763	779	797	2.3	4.5	4.2
Ohio	1,998	1,876	1,930	2,012	4.2	7.2	0.7	13,821	13,475	13,267	12,855	-3.1	-4.6	-7.0
South Dakota	121	70	85	46	-45.9	-34.3	-62.0	873	874	814	1,193	46.6	36.5	36.7
Wisconsin	915	919	792	836	5.6	-9.0	-8.6	19,839	19,949	17,363	18,396	5.9	-7.8	-7.3
Total	17,448	14,736	15,129	15,071	-0.4	2.3	-13.6	144,022	141,106	127,969	138,976	8.6	-1.5	-3.5

TABLE 2

TOTAL STOPOVER ARRIVALS BY PERMANENT RESIDENCE

	JULY							JANUARY - JULY						
	2000	2001	2002	2003	% Change			2000	2001	2002	2003	% Change		
					2003/02	2003/01	2003/00					2003/02	2003/01	2003/00
SOUTH (MIAMI)														
Alabama	989	828	851	859	0.9	3.7	-13.1	4,995	4,699	4,476	4,893	9.3	4.1	-2.0
Arkansas	412	491	421	358	-15.0	-27.1	-13.1	1,952	1,912	1,763	1,956	10.9	2.3	0.2
Florida	14,403	13,049	14,884	14,523	-2.4	11.3	0.8	73,402	73,651	72,049	72,310	0.4	-1.8	-1.5
Georgia	4,506	4,946	6,232	5,512	-11.6	11.4	22.3	24,517	26,902	28,970	27,282	-5.8	1.4	11.3
Louisiana	1,480	1,358	1,307	1,096	-16.1	-19.3	-25.9	4,905	4,886	4,803	4,605	-4.1	-5.8	-6.1
Mississippi	542	431	429	425	-0.9	-1.4	-21.6	2,403	2,092	2,148	1,944	-9.5	-7.1	-19.1
North Carolina	1,977	1,961	2,006	2,211	10.2	12.7	11.8	11,135	11,872	10,970	11,716	6.8	-1.3	5.2
Oklahoma	814	647	780	749	-4.0	15.8	-8.0	3,121	2,805	2,824	2,891	2.4	3.1	-7.4
Puerto Rico	194	107	153	128	-16.3	19.6	-34.0	1,027	909	1,018	733	-28.0	-19.4	-28.6
South Carolina	814	867	908	804	-11.5	-7.3	-1.2	4,719	5,334	4,917	5,161	5.0	-3.2	9.4
Tennessee	1,794	1,402	1,728	1,601	-7.3	14.2	-10.8	8,046	7,345	8,148	8,239	1.1	12.2	2.4
Texas	8,040	7,562	7,204	6,936	-3.7	-8.3	-13.7	27,410	24,251	26,330	24,980	-5.1	3.0	-8.9
Total	35,965	33,649	36,903	35,202	-4.6	4.6	-2.1	167,632	166,658	168,416	166,710	-1.0	0.0	-0.6
WEST (LOS ANGELES)														
Alaska	32	18	20	39	95.0	116.7	21.9	210	214	152	224	47.4	4.7	6.7
Arizona	1,369	1,019	487	578	18.7	-43.3	-57.8	3,879	5,081	2,939	2,920	-0.6	-42.5	-24.7
California	5,938	5,391	5,988	5,950	-0.6	10.4	0.2	25,914	26,164	24,842	24,456	-1.6	-6.5	-5.6
Colorado	769	614	607	671	10.5	9.3	-12.7	4,757	4,778	4,667	4,258	-8.8	-10.9	-10.5
Hawaii	46	43	27	21	-22.2	-51.2	-54.3	153	177	116	140	20.7	-20.9	-8.5
Idaho	74	78	97	69	-28.9	-11.5	-6.8	727	820	650	707	8.8	-13.8	-2.8
Montana	37	48	46	19	-58.7	-60.4	-48.6	351	449	441	549	24.5	22.3	56.4
Nevada	246	273	209	289	38.3	5.9	17.5	1,286	1,278	1,153	1,526	32.4	19.4	18.7
New Mexico	95	100	110	95	-13.6	-5.0	0.0	687	798	629	577	-8.3	-27.7	-16.0
Oregon	228	212	212	200	-5.7	-5.7	-12.3	1,596	1,533	1,392	1,360	-2.3	-11.3	-14.8
Utah	107	91	220	95	-56.8	4.4	-11.2	751	676	885	977	10.4	44.5	30.1
Washington	465	371	360	394	9.4	6.2	-15.3	2,914	2,789	2,452	2,566	4.6	-8.0	-11.9
Wyoming	64	20	25	39	56.0	95.0	-39.1	287	248	239	273	14.2	10.1	-4.9
Total	9,470	8,278	8,408	8,459	0.6	2.2	-10.7	43,512	45,005	40,557	40,533	-0.1	-9.9	-6.8
TOTAL U.S.A.	103,929	96,604	102,904	107,465	4.4	11.2	3.4	598,848	617,167	574,527	601,425	4.7	-2.6	0.4

TABLE 2

TOTAL STOPOVER ARRIVALS BY PERMANENT RESIDENCE

	<u>JULY</u>							<u>JANUARY - JULY</u>						
	<u>2000</u>	<u>2001</u>	<u>2002</u>	<u>2003</u>	<u>% Change</u>			<u>2000</u>	<u>2001</u>	<u>2002</u>	<u>2003</u>	<u>% Change</u>		
					2003/02	2003/01	2003/00					2003/02	2003/01	2003/00
<u>CANADA (TORONTO)</u>														
Alberta	333	309	211	211	0.0	-31.7	-36.6	2,821	3,024	2,323	2,473	6.5	-18.2	-12.3
British Columbia	178	253	158	212	34.2	-16.2	19.1	2,021	2,107	1,628	1,742	7.0	-17.3	-13.8
Manitoba	80	79	101	56	-44.6	-29.1	-30.0	1,953	2,105	1,156	2,088	80.6	-0.8	6.9
New Brunswick	34	35	20	9	-55.0	-74.3	-73.5	1,028	1,026	686	645	-6.0	-37.1	-37.3
Newfoundland	32	60	37	24	-35.1	-60.0	-25.0	401	407	388	364	-6.2	-10.6	-9.2
Nova Scotia	27	66	44	42	-4.5	-36.4	55.6	1,587	1,746	865	1,164	34.6	-33.3	-26.7
Ontario	6,026	7,161	7,213	6,011	-16.7	-16.1	-0.2	47,661	53,663	46,652	42,855	-8.1	-20.1	-10.1
P.E. Island	6	2	1	7	600.0	250.0	16.7	108	104	98	127	29.6	22.1	17.6
Quebec	727	798	614	567	-7.7	-28.9	-22.0	7,264	9,427	7,366	6,732	-8.6	-28.6	-7.3
Saskatchewan	48	64	22	14	-36.4	-78.1	-70.8	694	921	502	850	69.3	-7.7	22.5
Other Canada	39	50	31	22	-29.0	-56.0	-43.6	218	290	202	139	-31.2	-52.1	-36.2
Total	7,530	8,877	8,452	7,175	-15.1	-19.2	-4.7	65,756	74,820	61,866	59,179	-4.3	-20.9	-10.0
<u>LONDON OFFICE</u>														
<u>Northern Europe</u>														
U.K.	13,083	13,594	12,990	15,523	19.5	14.2	18.7	77,454	73,269	69,107	83,454	20.8	13.9	7.7
Denmark	66	78	55	26	-52.7	-66.7	-60.6	664	494	339	244	-28.0	-50.6	-63.3
Finland	32	54	41	20	-51.2	-63.0	-37.5	233	257	265	301	13.6	17.1	29.2
Norway	110	75	68	70	2.9	-6.7	-36.4	610	524	574	551	-4.0	5.2	-9.7
Sweden	100	102	97	42	-56.7	-58.8	-58.0	883	853	695	588	-15.4	-31.1	-33.4
<u>Southern Europe</u>														
Greece	22	10	48	24	-50.0	140.0	9.1	320	115	160	159	-0.6	38.3	-50.3
Italy	962	952	953	1,426	49.6	49.8	48.2	8,776	7,590	6,575	13,869	110.9	82.7	58.0
Portugal	42	23	99	33	-66.7	43.5	-21.4	232	168	604	275	-54.5	63.7	18.5
Spain	133	790	867	1,225	41.3	55.1	821.1	637	2,117	3,252	3,718	14.3	75.6	483.7
<u>Western Europe</u>														
Austria	210	199	168	210	25.0	5.5	0.0	1,636	1,414	1,041	1,247	19.8	-11.8	-23.8
Belgium	136	91	150	323	115.3	254.9	137.5	654	653	753	1,325	76.0	102.9	102.6
France	283	196	299	231	-22.7	17.9	-18.4	2,466	1,654	1,691	1,584	-6.3	-4.2	-35.8
Germany	1,628	1,223	1,346	1,272	-5.5	4.0	-21.9	15,296	12,217	8,116	9,320	14.8	-23.7	-39.1
Luxemburg	6	5	31	23	-25.8	360.0	-	53	51	61	59	-3.3	15.7	11.3
Netherlands	426	390	380	590	55.3	51.3	38.5	2,272	1,732	1,341	2,322	73.2	34.1	2.2
Switzerland	293	264	244	219	-10.2	-17.0	-25.3	2,162	1,549	1,133	1,331	17.5	-14.1	-38.4
<u>Central/East Europe</u>														
Czechoslovakia	10	24	60	16	-73.3	-33.3	60.0	101	203	195	203	4.1	0.0	101.0
Hungary	4	10	52	8	-84.6	-20.0	100.0	118	100	165	102	-38.2	2.0	-13.6
Poland	15	28	87	212	143.7	657.1	1313.3	437	237	394	586	48.7	147.3	34.1
Russia	49	55	98	54	-44.9	-1.8	10.2	486	592	690	742	7.5	25.3	52.7
Other Europe	95	62	222	61	-72.5	-1.6	-35.8	565	536	720	636	-11.7	18.7	12.6
Total	17,705	18,225	18,355	21,608	17.7	18.6	22.0	116,055	106,325	97,871	122,616	25.3	15.3	5.7

TABLE 2

TOTAL STOPOVER ARRIVALS BY PERMANENT RESIDENCE

	<u>JULY</u>			<u>% Change</u>			<u>JANUARY - JULY</u>			<u>% Change</u>				
	<u>2000</u>	<u>2001</u>	<u>2002</u>	<u>2003</u>	<u>2003/02</u>	<u>2003/01</u>	<u>2003/00</u>	<u>2000</u>	<u>2001</u>	<u>2002</u>	<u>2003</u>	<u>2003/02</u>	<u>2003/01</u>	<u>2003/00</u>
<u>LATIN AMERICA</u>														
<u>CENTRAL AMERICA</u>														
Mexico	279	319	230	213	-7.4	-33.2	-23.7	1,371	1,580	1,139	1,125	-1.2	-28.8	-17.9
Belize	108	66	91	64	-29.7	-3.0	-40.7	331	284	339	690	103.5	143.0	108.5
Costa Rica	80	59	65	45	-30.8	-23.7	-43.8	342	378	417	304	-27.1	-19.6	-11.1
El Salvador	12	16	36	8	-77.8	-50.0	-33.3	49	129	140	72	-48.6	-44.2	46.9
Guatemala	43	31	42	24	-42.9	-22.6	-44.2	179	194	246	182	-26.0	-6.2	1.7
Honduras	116	11	20	12	-40.0	9.1	-89.7	192	105	101	96	-5.0	-8.6	-50.0
Nicaragua	4	2	6	1	-83.3	-50.0	-75.0	30	25	53	23	-56.6	-8.0	-23.3
Panama	98	116	79	75	-5.1	-35.3	-23.5	786	820	592	594	0.3	-27.6	-24.4
Total	740	620	569	442	-22.3	-28.7	-40.3	3,280	3,515	3,027	3,086	1.9	-12.2	-5.9
<u>SOUTH AMERICA</u>														
Argentina	67	116	34	71	108.8	-38.8	6.0	712	902	286	430	50.3	-52.3	-39.6
Bolivia	4	9	8	5	-37.5	-44.4	25.0	30	41	34	38	11.8	-7.3	26.7
Brazil	98	83	137	93	-32.1	12.0	-5.1	635	582	595	468	-21.3	-19.6	-26.3
Chile	98	81	72	36	-50.0	-55.6	-63.3	514	451	450	251	-44.2	-44.3	-51.2
Colombia	234	132	188	21	-88.8	-84.1	-91.0	1,041	1,132	671	467	-30.4	-58.7	-55.1
Ecuador	16	28	6	12	100.0	-57.1	-25.0	106	175	110	51	-53.6	-70.9	-51.9
Guyana	256	150	253	168	-33.6	12.0	-34.4	1,077	933	1,012	1,008	-0.4	8.0	-6.4
Paraguay	2	6	5	29	480.0	383.3	1350.0	15	17	17	40	135.3	135.3	166.7
Peru	68	53	29	44	51.7	-17.0	-35.3	202	238	235	216	-8.1	-9.2	6.9
Surinam	73	21	21	41	95.2	95.2	-43.8	165	172	113	178	57.5	3.5	7.9
Uruguay	1	37	13	2	-84.6	-94.6	100.0	57	98	53	31	-41.5	-68.4	-45.6
Venezuela	77	80	89	85	-4.5	6.3	10.4	640	808	789	417	-47.1	-48.4	-34.8
Other South America	0	0	2	2	0.0	-	-	3	4	11	6	-45.5	50.0	100.0
Total	994	796	857	609	-28.9	-23.5	-38.7	5,197	5,553	4,376	3,601	-17.7	-35.2	-30.7
Total Latin America	1,734	1,416	1,426	1,051	-26.3	-25.8	-39.4	8,477	9,068	7,403	6,687	-9.7	-26.3	-21.1

TABLE 2

TOTAL STOPOVER ARRIVALS BY PERMANENT RESIDENCE

	JULY							JANUARY - JULY						
	2000	2001	2002	2003	% Change			2000	2001	2002	2003	% Change		
					2003/02	2003/01	2003/00					2003/02	2003/01	2003/00
CARIBBEAN														
Antigua	268	199	253	339	34.0	70.4	26.5	1,042	864	963	1,077	11.8	24.7	3.4
Bahamas	834	835	470	371	-21.1	-55.6	-55.5	3,846	3,905	2,280	1,711	-25.0	-56.2	-55.5
Barbados	594	503	542	675	24.5	34.2	13.6	2,931	2,490	2,705	3,122	15.4	25.4	6.5
Bermuda	182	295	226	333	47.3	12.9	83.0	1,019	991	1,056	1,378	30.5	39.1	35.2
British Virgin Is.	90	67	87	104	19.5	55.2	15.6	268	269	269	336	24.9	24.9	25.4
Cayman Is.	1,241	969	1,196	1,172	-2.0	20.9	-5.6	6,453	6,841	6,264	6,765	8.0	-1.1	4.8
Dominica	49	61	80	35	-56.3	-42.6	-28.6	257	248	215	211	-1.9	-14.9	-17.9
Grenada	134	80	116	89	-23.3	11.3	-33.6	443	332	361	384	6.4	15.7	-13.3
Monsterrat	19	21	23	10	-56.5	-52.4	-47.4	73	70	50	64	28.0	-8.6	-12.3
St. Kitts/Nevis/Anguilla	167	101	132	98	-25.8	-3.0	-41.3	517	399	411	443	7.8	11.0	-14.3
St. Lucia	184	145	250	211	-15.6	45.5	14.7	940	786	882	1,042	18.1	32.6	10.9
St. Vincent	124	78	98	115	17.3	47.4	-7.3	339	309	360	371	3.1	20.1	9.4
Turks & Caicos Is.	98	146	128	149	16.4	2.1	52.0	299	558	529	569	7.6	2.0	90.3
Trinidad & Tobago	872	567	873	734	-15.9	29.5	-15.8	3,667	3,858	4,094	4,256	4.0	10.3	16.1
Comm. Caribbean	4,856	4,067	4,474	4,435	-0.9	9.0	-8.7	22,094	21,920	20,439	21,729	6.3	-0.9	-1.7
Aruba	61	67	97	74	-23.7	10.4	21.3	179	173	231	300	29.9	73.4	67.6
Bonaire	0	0	0	5	-	-	-	0	0	0	21	-	-	-
Cuba	99	64	41	87	112.2	35.9	-12.1	838	389	351	403	14.8	3.6	-51.9
Curacao	89	232	166	239	44.0	3.0	168.5	334	444	610	902	47.9	103.2	170.1
Dominican Republic	84	77	88	94	6.8	22.1	11.9	489	540	569	491	-13.7	-9.1	0.4
Guadelope	17	13	15	10	-33.3	-23.1	-41.2	43	44	54	59	9.3	34.1	37.2
Haiti	81	79	178	102	-42.7	29.1	25.9	287	316	492	482	-2.0	52.5	67.9
St. Maarten	63	81	82	127	54.9	56.8	101.6	255	308	306	396	29.4	28.6	55.3
All other Caribbean	137	91	62	76	22.6	-16.5	-44.5	336	321	320	310	-3.1	-3.4	-7.7
Other Caribbean	631	704	729	814	11.7	15.6	29.0	2,761	2,535	2,933	3,364	14.7	32.7	21.8
TOTAL CARIBBEAN	5,487	4,771	5,203	5,249	0.9	10.0	-4.3	24,855	24,455	23,372	25,093	7.4	2.6	1.0
OTHER COUNTRIES														
African Countries	157	141	265	141	-46.8	0.0	-10.2	795	819	726	623	-14.2	-23.9	-21.6
Isreal	151	117	60	101	68.3	-13.7	-33.1	550	611	390	465	19.2	-23.9	-15.5
Saudi Arabia	10	7	25	10	-60.0	42.9	0.0	27	25	33	24	-27.3	-4.0	-11.1
Turkey	29	43	13	12	-7.7	-72.1	-58.6	218	149	77	81	5.2	-45.6	-62.8
Other Middle East	38	26	76	66	-13.2	153.8	73.7	155	189	210	198	-5.7	4.8	27.7
India & Pakistan	56	56	45	61	35.6	8.9	8.9	413	494	334	342	2.4	-30.8	-17.2
Japan	543	538	394	357	-9.4	-33.6	-34.3	4,444	3,855	2,676	2,233	-16.6	-42.1	-49.8
China	77	41	44	62	40.9	51.2	-19.5	342	302	285	330	15.8	9.3	-3.5
Taiwan	31	11	9	3	-66.7	-72.7	-90.3	63	49	45	47	4.4	-4.1	-25.4
Korea	16	26	25	8	-68.0	-69.2	-50.0	131	168	151	104	-31.1	-38.1	-20.6
Philippines	48	26	48	122	154.2	369.2	154.2	363	297	367	785	113.9	164.3	116.3
Singapore	5	25	21	15	-28.6	-40.0	200.0	29	95	65	72	10.8	-24.2	148.3
Other Asia	36	27	36	40	11.1	48.1	11.1	171	224	148	169	14.2	-24.6	-1.2
Australia	149	111	233	224	-3.9	101.8	50.3	902	850	890	1,493	67.8	75.6	65.5
New Zealand	25	42	38	238	526.3	466.7	852.0	133	177	212	354	67.0	100.0	166.2
All Other Ctries	15	11	16	31	93.8	181.8	106.7	51	44	55	34	-38.2	-22.7	-33.3
Total	1,386	1,248	1,348	1,491	10.6	19.5	7.6	8,787	8,348	6,664	7,354	10.4	-11.9	-16.3
GRAND TOTAL	137,771	131,141	137,688	144,039	4.6	9.8	4.5	822,778	840,183	771,703	822,354	6.6	-2.1	-0.1

STOPOVER VISITORS BY MARKET SHARE

JANUARY – JULY
2003

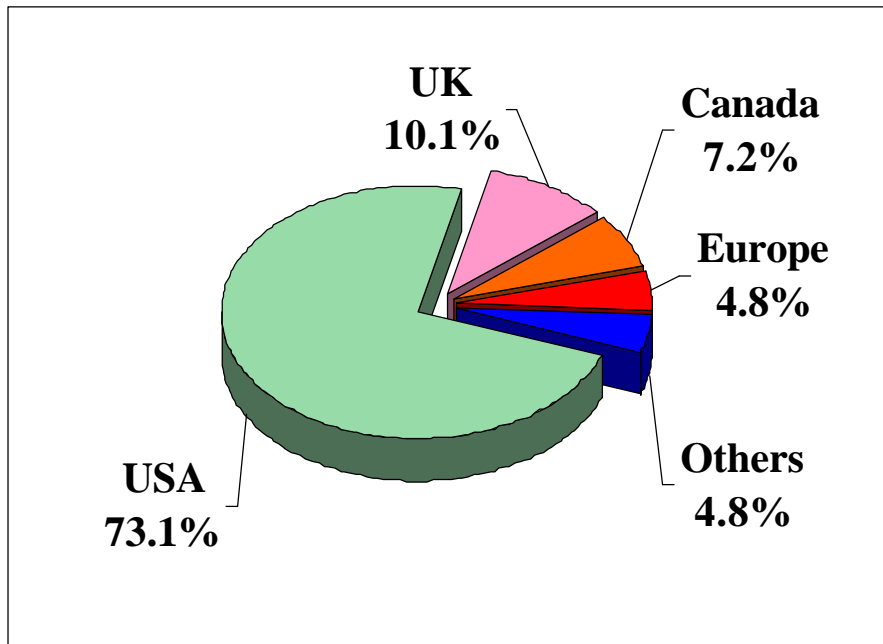


Fig. 2

Country	July 2003	% Share	Jan.-July 2003	% Share	Jan.-July 2002	% Share	% Change 2003/02
U.S.A	107,465	74.6%	601,425	73.1%	574,527	74.4%	4.7%
CANADA	7,175	5.0%	59,179	7.2%	61,866	8.0%	-4.3%
U.K.	15,523	10.8%	83,454	10.1%	69,107	9.0%	20.8%
EUROPE	6,085	4.2%	39,162	4.8%	28,764	3.7%	36.1%
OTHER	7,791	4.2%	39,134	4.8%	37,439	4.9%	4.5%
TOTAL	144,039	100.0%	822,354	100.0%	771,703	100.0%	6.6%

TABLE 3

<u>AVERAGE LENGTH OF STAY (Nights)</u>					
<u>FOREIGN NATIONALS</u>					
	All Types of Accommodation			Hotel	
	2002	2003		2002	2003
January	10.4	10.1		6.7	6.6
February	9.0	8.8		6.5	6.3
March	8.4	8.5		6.2	6.1
April	9.3	8.9		6.2	6.2
May	9.2	9.2		5.8	5.9
June	10.6	10.5		6.1	6.2
July	11.6	11.5		6.6	6.7
Jan. - July	9.4	9.3		6.2	6.2

Note: LENGTH OF STAY IS BASED ON INTENDED LENGTH OF STAY

**STOPOVER ARRIVALS BY AGE
JANUARY - JULY
2003**

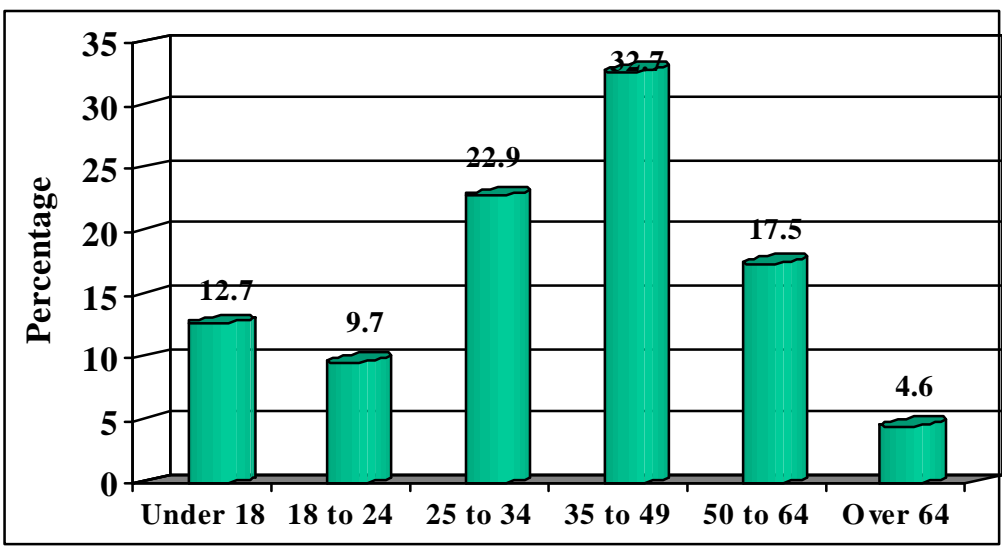


Fig. 3

AGE DISTRIBUTION OF STOPOVER ARRIVALS

Age	JULY		JAN.-JULY		JAN.-JULY		%Change 2003/02
	2003	% Share	2003	% Share	2002	% Share	
Under 18	28,298	19.6	104,129	12.7	96,181	12.5	8.3%
18 and 24	14,559	10.1	79,686	9.7	75,455	9.8	5.6%
25 and 34	32,708	22.7	187,910	22.9	182,531	23.7	2.9%
35 and 49	42,373	29.4	268,760	32.7	252,525	32.7	6.4%
50 and 64	20,452	14.2	143,919	17.5	129,697	16.8	11.0%
Over 64	5,649	3.9	37,950	4.6	35,314	4.6	7.5%
Total	144,039	100.0	822,354	100.0	771,703	100.0	6.6%

TABLE 4**CRUISE PASSENGER ARRIVALS BY MONTH AND PORT OF CALL
JANUARY - JULY 2003**

	MONTEGO BAY		% Change 2003/02		OCHO RIOS		% Change 2003/02		2003 TOTAL		2002 TOTAL		% Change 2003/02	
	CALLS	PAX	CALLS	PAX	CALLS	PAX	CALLS	PAX	CALLS	PAX	CALLS	PAX	CALLS	PAX
January	25	43,827	56.3%	74.4%	35	75,007	16.7%	13.2%	60	118,834	46	91,399	30.4%	30.0%
February	24	39,006	71.4%	121.0%	35	77,390	20.7%	30.8%	60	116,451	43	76,799	39.5%	51.6%
March	27	38,558	92.9%	100.8%	41	89,932	57.7%	49.2%	69	128,758	41	79,547	68.3%	61.9%
April	19	33,601	216.7%	335.1%	30	74,408	-6.3%	9.9%	49	108,009	38	75,442	28.9%	43.2%
Jan. - Apr.	95	154,992	90.0%	122.3%	141	316,737	20.5%	25.0%	238	472,052	168	323,187	41.7%	46.1%
May	7	16,907	40.0%	52.0%	18	47,443	5.9%	9.5%	25	64,350	22	54,453	13.6%	18.2%
June	6	14,214	50.0%	43.2%	17	50,403	6.3%	14.0%	24	64,812	20	54,125	20.0%	19.7%
July	5	17,608	0.0%	39.2%	22	66,546	22.2%	28.3%	27	84,154	23	64,512	17.4%	30.4%
May - July	18	48,729	28.6%	44.6%	57	164,392	11.8%	17.9%	76	213,316	65	173,090	16.9%	23.2%
Jan. - July	113	203,721	76.6%	97.0%	198	481,129	17.9%	22.5%	314	685,368	233	496,277	34.8%	38.1%

- * Note:
1. During the month of January three Cruise Ship calls with 3,174 Cruise passengers visited two ports.
 2. During the month of February 2 Cruise Ship calls with 2,798 Cruise passengers visited two ports.
 3. Included in the total Cruise passengers for the month of February, 1 call with 55 passengers visited Port Antonio.
 4. During the month of March 3 Cruise Ship calls with 2,679 Cruise passengers visited two ports.
 5. Included in the total Cruise passengers for the month of March, 1 call with 268 passengers visited Kingston.
 6. Included in the total Cruise passengers for the month of June, 1 call with 195 passengers visited Port Antonio.
 7. During the month of June 1 Cruise Ship call with 3,494 Cruise passengers visited two ports.

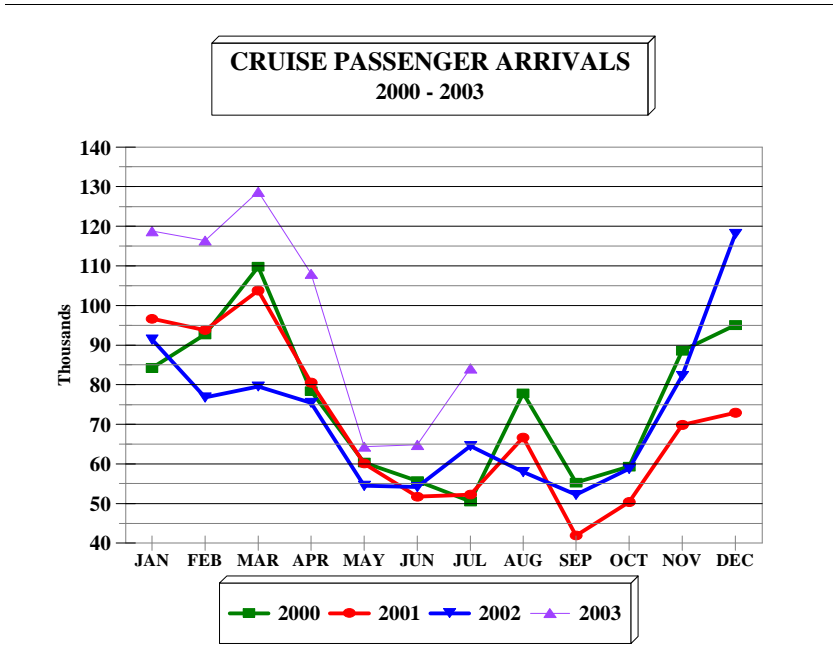


FIG. 4

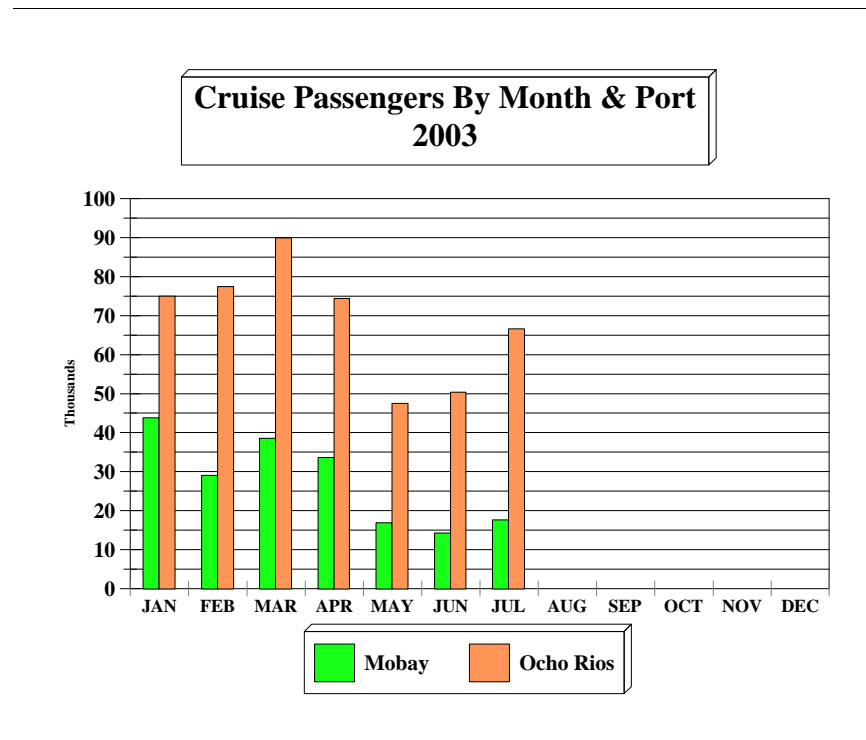


FIG. 4a

TABLE 5A
LANDED TOURISTS BY SCHEDULED & CHARTERED AIRLINES

	<u>JULY 2003</u>			<u>JANUARY - JULY 2003</u>		
	<u>SCHEDULED AIRLINES</u>	<u>CHARTERED AIRLINES</u>	<u>TOTAL STOPOVERS</u>	<u>SCHEDULED AIRLINES</u>	<u>CHARTERED AIRLINES</u>	<u>TOTAL STOPOVERS</u>
U.S.A.						
<u>NORTHEAST (NEW YORK)</u>						
Connecticut	2,650	2	2,652	14,381	273	14,654
Delaware	488	0	488	2,983	15	2,998
Maine	131	0	131	1,615	20	1,635
Maryland	4,986	5	4,991	22,494	210	22,704
Massachusetts	2,378	2	2,380	18,531	449	18,980
New Hampshire	224	0	224	2,759	79	2,838
New Jersey	6,875	3	6,878	36,749	363	37,112
New York	21,501	29	21,530	97,273	1,664	98,937
Pennsylvania	5,678	3	5,681	33,996	486	34,482
Rhode Island	282	0	282	2,164	57	2,221
Vermont	48	0	48	1,001	21	1,022
Virginia	2,467	35	2,502	12,838	410	13,248
Washington D.C.	763	1	764	3,298	34	3,332
West Virginia	176	6	182	1,004	39	1,043
Total	<u>48,647</u>	<u>86</u>	<u>48,733</u>	<u>251,086</u>	<u>4,120</u>	<u>255,206</u>
<u>MIDWEST (CHICAGO)</u>						
Illinois	2,751	1,446	4,197	19,754	13,699	33,453
Indiana	1,031	183	1,214	6,803	2,387	9,190
Iowa	397	50	447	3,815	1,519	5,334
Kansas	428	44	472	2,466	342	2,808
Kentucky	542	204	746	2,994	1,005	3,999
Michigan	1,576	85	1,661	12,950	6,763	19,713
Minnesota	588	5	593	8,701	5,997	14,698
Missouri	785	1,670	2,455	4,288	9,433	13,721
Nebraska	337	20	357	2,702	117	2,819
North Dakota	33	2	35	598	199	797
Ohio	1,834	178	2,012	10,833	2,022	12,855
South Dakota	45	1	46	868	325	1,193
Wisconsin	548	288	836	6,999	11,397	18,396
Total	<u>10,895</u>	<u>4,176</u>	<u>15,071</u>	<u>83,771</u>	<u>55,205</u>	<u>138,976</u>

TABLE 5A
LANDED TOURISTS BY SCHEDULED & CHARTERED AIRLINES

	<u>JULY 2003</u>			<u>JANUARY - JULY 2003</u>		
	SCHEDULED AIRLINES	CHARTERED AIRLINES	TOTAL STOPOVERS	SCHEDULED AIRLINES	CHARTERED AIRLINES	TOTAL STOPOVERS
<u>SOUTH (MIAMI)</u>						
Alabama	812	47	859	4,619	274	4,893
Arkansas	298	60	358	1,686	270	1,956
Florida	14,504	19	14,523	72,118	192	72,310
Georgia	5,271	241	5,512	26,162	1,120	27,282
Louisiana	532	564	1,096	3,027	1,578	4,605
Mississippi	320	105	425	1,634	310	1,944
North Carolina	2,142	69	2,211	11,127	589	11,716
Oklahoma	272	477	749	1,644	1,247	2,891
Puerto Rico	128	0	128	732	1	733
South Carolina	750	54	804	4,880	281	5,161
Tennessee	1,434	167	1,601	7,591	648	8,239
Texas	3,993	2,943	6,936	18,527	6,453	24,980
Total	30,456	4,746	35,202	153,747	12,963	166,710
<u>WEST (LOS ANGELES)</u>						
Alaska	39	0	39	220	4	224
Arizona	570	8	578	2,872	48	2,920
California	5,925	25	5,950	24,209	247	24,456
Colorado	657	14	671	4,102	156	4,258
Hawaii	21	0	21	131	9	140
Idaho	69	0	69	702	5	707
Montana	19	0	19	544	5	549
Nevada	286	3	289	1,502	24	1,526
New Mexico	88	7	95	547	30	577
Oregon	196	4	200	1,338	22	1,360
Utah	95	0	95	948	29	977
Washington	397	5	402	2,524	50	2,574
Wyoming	30	1	31	258	7	265
Total	8,392	67	8,459	39,897	636	40,533
TOTAL U.S.A.	98,390	9,075	107,465	528,501	72,924	601,425

TABLE 5A
LANDED TOURISTS BY SCHEDULED & CHARTERED AIRLINES

	<u>JULY 2003</u>			<u>JANUARY - JULY 2003</u>		
	SCHEDULED AIRLINES	CHARTERED AIRLINES	TOTAL STOPOVERS	SCHEDULED AIRLINES	CHARTERED AIRLINES	TOTAL STOPOVERS
<u>CANADA (TORONTO)</u>						
Alberta	204	7	211	2,326	147	2,473
British Columbia	210	2	212	1,674	68	1,742
Manitoba	49	7	56	1,246	842	2,088
New Brunswick	9	0	9	624	21	645
Newfoundland	24	0	24	343	21	364
Nova Scotia	41	1	42	1,134	30	1,164
Ontario	4,320	1,691	6,011	27,149	15,706	42,855
P.E. Island	6	1	7	124	3	127
Quebec	552	15	567	4,791	1,941	6,732
Saskatchewan	14	0	14	670	178	848
Other Canada	21	1	22	111	30	141
Total	5,450	1,725	7,175	40,192	18,987	59,179
<u>LONDON OFFICE</u>						
<u>Northern Europe</u>						
U.K.	11,239	4,284	15,523	57,098	26,356	83,454
Denmark	26	0	26	242	2	244
Finland	20	0	20	297	4	301
Norway	70	0	70	546	5	551
Sweden	42	0	42	576	12	588
<u>Southern Europe</u>						
Greece	23	1	24	149	10	159
Italy	677	749	1,426	5,462	8,407	13,869
Portugal	16	17	33	244	31	275
Spain	125	1,100	1,225	944	2,774	3,718
<u>Western Europe</u>						
Austria	209	1	210	1,243	4	1,247
Belgium	322	1	323	1,320	5	1,325
France	228	3	231	1,562	22	1,584
Germany	1,267	5	1,272	9,265	55	9,320
Luxemburg	23	0	23	59	0	59
Netherlands	589	1	590	2,314	8	2,322
Switzerland	211	8	219	1,291	40	1,331
<u>Central/East Europe</u>						
Czechoslovakia	15	1	16	200	3	203
Hungary	8	0	8	99	3	102
Poland	212	0	212	571	15	586
Russia	54	0	54	737	5	742
Other Europe	61	0	61	618	18	636
Total	15,437	6,171	21,608	84,837	37,779	122,616

TABLE 5A
LANDED TOURISTS BY SCHEDULED & CHARTERED AIRLINES

	<u>JULY 2003</u>			<u>JANUARY - JULY 2003</u>		
	SCHEDULED AIRLINES	CHARTERED AIRLINES	TOTAL STOPOVERS	SCHEDULED AIRLINES	CHARTERED AIRLINES	TOTAL STOPOVERS
<u>OTHER COUNTRIES</u>						
<u>CENTRAL AMERICA</u>						
Mexico	210	3	213	1,114	11	1,125
Belize	64	0	64	690	0	690
Costa Rica	45	0	45	304	0	304
El Salvador	8	0	8	72	0	72
Guatemala	24	0	24	182	0	182
Honduras	12	0	12	96	0	96
Nicaragua	1	0	1	23	0	23
Panama	75	0	75	594	0	594
Total	439	3	442	3,075	11	3,086
<u>SOUTH AMERICA</u>						
Argentina	71	0	71	430	0	430
Bolivia	5	0	5	38	0	38
Brazil	93	0	93	467	1	468
Chile	36	0	36	251	0	251
Colombia	21	0	21	209	258	467
Ecuador	12	0	12	51	0	51
Guyana	168	0	168	1,007	1	1,008
Paraguay	29	0	29	40	0	40
Peru	43	1	44	215	1	216
Surinam	41	0	41	178	0	178
Uruguay	2	0	2	31	0	31
Venezuela	85	0	85	414	3	417
Other South America	2	0	2	6	0	6
Total	608	1	609	3,337	264	3,601
Total Latin America	1,047	4	1,051	6,412	275	6,687

TABLE 5A
LANDED TOURISTS BY SCHEDULED & CHARTERED AIRLINES

	<u>JULY 2003</u>			<u>JANUARY - JULY 2003</u>		
	SCHEDULED AIRLINES	CHARTERED AIRLINES	TOTAL STOPOVERS	SCHEDULED AIRLINES	CHARTERED AIRLINES	TOTAL STOPOVERS
<u>CARIBBEAN</u>						
Antigua	339	0	339	1,074	3	1,077
Bahamas	371	0	371	1,705	6	1,711
Barbados	674	1	675	3,121	1	3,122
Bermuda	333	0	333	1,220	158	1,378
British Virgin Is.	104	0	104	336	0	336
Cayman Is.	1,172	0	1,172	6,764	1	6,765
Dominica	35	0	35	213	0	213
Grenada	89	0	89	384	0	384
Monsterrat	10	0	10	63	1	64
St. Kitts/Nevis/Anguilla	98	0	98	442	1	443
St. Lucia	211	0	211	1,042	0	1,042
St. Vincent	115	0	115	370	1	371
Turks & Caicos Is.	149	0	149	569	0	569
Trinidad & Tobago	734	0	734	4,255	1	4,256
Comm. Caribbean	4,434	1	4,435	21,558	173	21,731
Aruba	74	0	74	300	0	300
Bonaire	5	0	5	21	0	21
Cuba	87	0	87	403	0	403
Curacao	239	0	239	902	0	902
Dominican Republic	88	6	94	483	6	489
Guadelope	10	0	10	44	15	59
Haiti	102	0	102	481	1	482
St. Maarten	127	0	127	395	1	396
All other Caribbean	76	0	76	310	0	310
Other Caribbean	808	6	814	3,339	23	3,362
TOTAL CARIBBEAN	5,242	7	5,249	24,897	196	25,093
<u>OTHER COUNTRIES</u>						
African Countries	140	1	141	608	15	623
Isreal	101	0	101	459	6	465
Saudi Arabia	10	0	10	24	0	24
Turkey	12	0	12	71	10	81
Other Middle East	66	0	66	197	2	199
India & Pakistan	61	0	61	332	9	341
Japan	357	0	357	2,222	11	2,233
China	62	0	62	293	37	330
Taiwan	3	0	3	47	0	47
Korea	8	0	8	101	3	104
Philippines	122	0	122	784	1	785
Singapore	15	0	15	70	2	72
Other Asia	40	0	40	167	2	169
Australia	223	1	224	1,484	9	1,493
New Zealand	238	0	238	354	0	354
All Other Ctries	31	0	31	34	0	34
Total	1,489	2	1,491	7,247	107	7,354
GRAND TOTAL	127,055	16,984	144,039	692,086	130,268	822,354

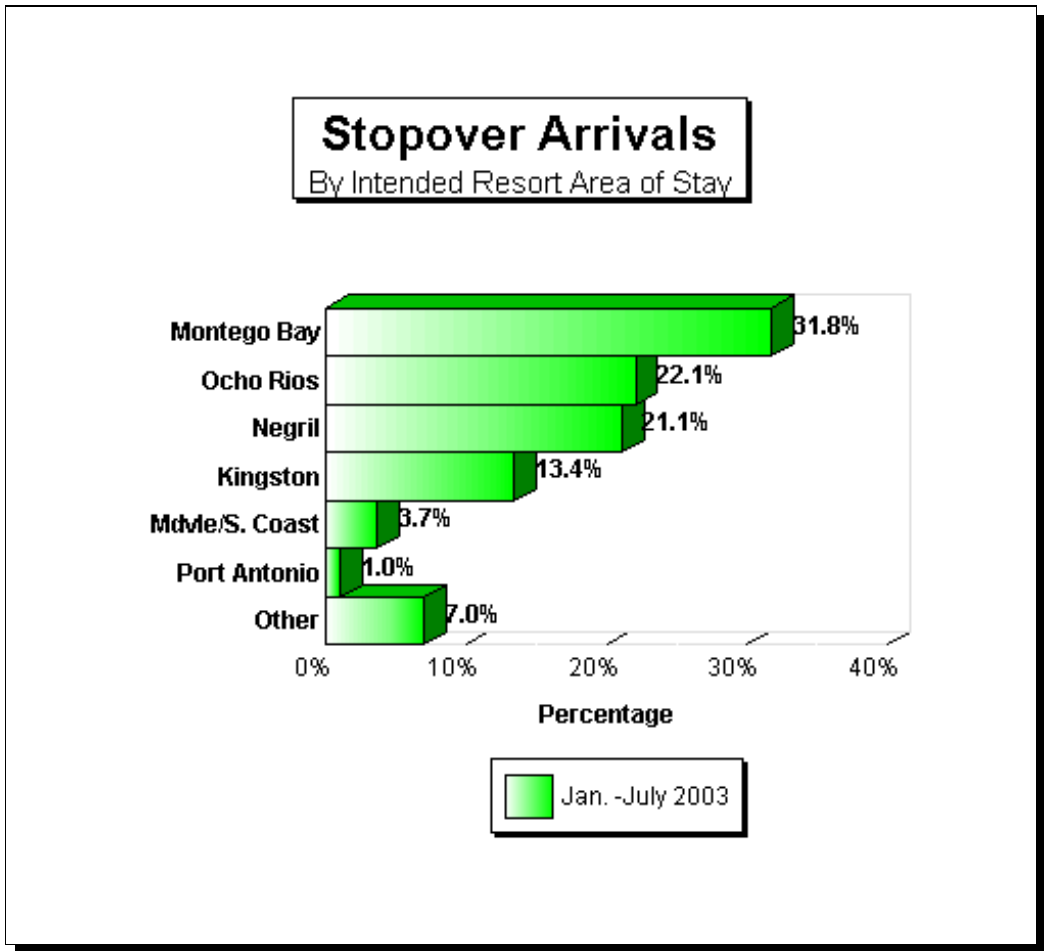


Fig. 5

STOPOVER ARRIVALS BY INTENDED AREA OF STAY

Area	JULY		JAN.-JULY		JAN.-JULY		%Change 2003/02
	2003	%Share	2003	%Share	2002	%Share	
Montego Bay	41,130	28.6%	261,202	31.8%	243,491	31.6%	7.3%
Ocho Rios	32,472	22.5%	181,689	22.1%	169,322	21.9%	7.3%
Negril	25,152	17.5%	173,230	21.1%	163,972	21.2%	5.6%
Kingston	22,287	15.5%	110,122	13.4%	105,570	13.7%	4.3%
Mdvle/S. Coast	7,536	5.2%	30,120	3.7%	28,951	3.8%	4.0%
Port Antonio	1,964	1.4%	8,395	1.0%	8,006	1.0%	4.9%
Other	13,498	9.4%	57,596	7.0%	52,391	6.8%	9.9%
Total	144,039	100.0%	822,354	100.0%	771,703	100.0%	6.6%