

TABLE 1

TOURIST ARRIVALS

January

2003

Month	Foreign Nationals	<----- Stopovers ----->				Non-Resident Jamaicans	Total Stopover Arrivals		
		+/- 2003/02	+/- 2003/01	+/- 2003/02	+/- 2003/01		+/- 2003/02	+/- 2003/01	
January	95,875	12.6%	-0.9%	5,431	9.0%	5.2%	101,306	12.4%	-0.6%

STOPOVER ARRIVALS FOREIGN NATIONALS

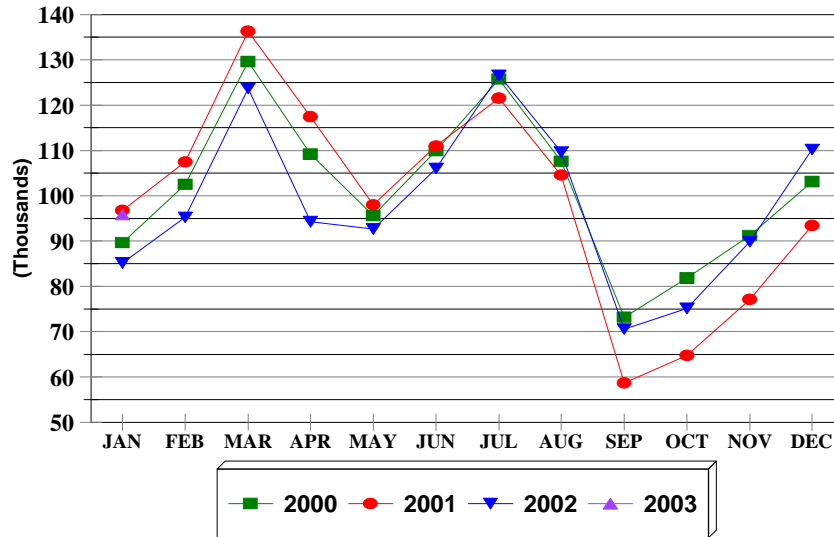


FIG. 1

STOPOVER ARRIVALS NON-RESIDENT JAMAICANS

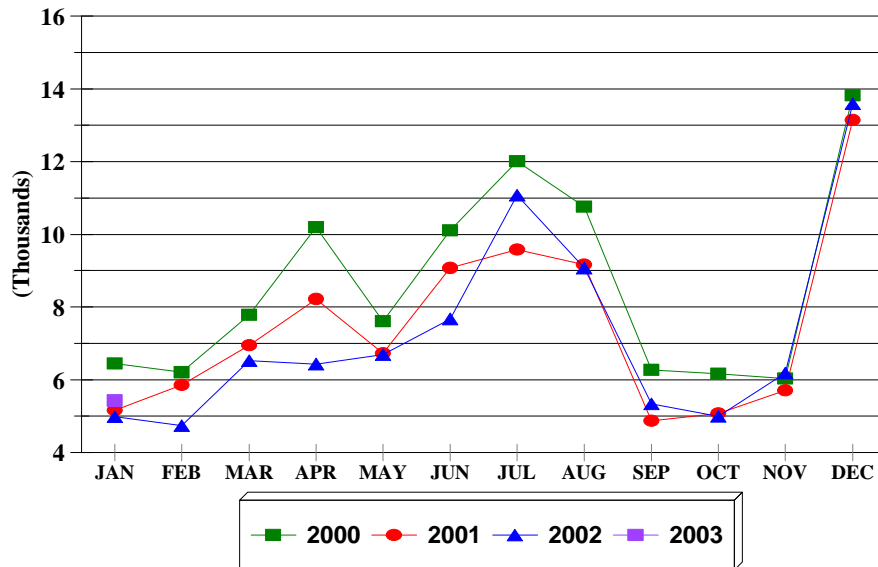


FIG. 1a

TABLE 1.1

First & Repeat Visit to Jamaica

FOREIGN NATIONALS

2003

	Arrivals				TOTAL	% SHARE	
	First Visit	+/-	Repeat Visit	+/-		First Visit	Repeat Visit
Jan.	51,389	-4.1	44,486	3.2	95,875	53.6	46.4

TABLE 1.2

**STOPOVER ARRIVALS BY MARKET REGION
AND MONTH OF ARRIVAL 2003**

	U.S.A.				Canada	U.K. Europe	Latin America	Caribbean	Asia	Other Countries	Total
	Northeast	Mid-West	South	West							
January	28,497	21,351	14,638	4,110	11,589	16,286	1,087	2,821	635	292	101,306
+/- %	10.8%	7.2%	9.9%	8.1%	3.6%	32.2%	17.5%	24.5%	76.4%	1.0%	12.6%

TABLE 2

TOTAL STOPOVER ARRIVALS BY PERMANENT RESIDENCE

	JANUARY				2003/02	2003/01	2003/00
	2000	2001	2002	2003	%Change	%Change	%Change
U.S.A.							
<u>NORTHEAST (NEW YORK)</u>							
Connecticut	1,197	1,333	1,255	1,525	21.5	14.4	27.4
Delaware	301	384	311	377	21.2	-1.8	25.2
Maine	297	229	204	217	6.4	-5.2	-26.9
Maryland	2,074	2,376	2,377	2,426	2.1	2.1	17.0
Massachusetts	2,523	2,729	2,551	2,620	2.7	-4.0	3.8
New Hampshire	358	476	382	314	-17.8	-34.0	-12.3
New Jersey	3,300	3,831	3,713	4,012	8.1	4.7	21.6
New York	10,119	10,197	9,384	10,537	12.3	3.3	4.1
Pennsylvania	3,280	4,199	3,505	4,372	24.7	4.1	33.3
Rhode Island	281	233	260	322	23.8	38.2	14.6
Vermont	134	139	95	100	5.3	-28.1	-25.4
Virginia	1,093	1,484	1,298	1,255	-3.3	-15.4	14.8
Washington D.C.	310	347	308	346	12.3	-0.3	11.6
West Virginia	103	116	79	74	-6.3	-36.2	-28.2
Total	25,370	28,073	25,722	28,497	10.8	1.5	12.3
<u>MIDWEST (CHICAGO)</u>							
Illinois	5,261	4,974	4,745	5,017	5.7	0.9	-4.6
Indiana	914	1,170	1,003	1,101	9.8	-5.9	20.5
Iowa	830	1,148	1,184	1,100	-7.1	-4.2	32.5
Kansas	351	436	280	326	16.4	-25.2	-7.1
Kentucky	335	321	300	355	18.3	10.6	6.0
Michigan	2,598	2,464	2,117	2,076	-1.9	-15.7	-20.1
Minnesota	2,998	3,127	2,835	2,959	4.4	-5.4	-1.3
Missouri	1,522	1,613	1,394	1,534	10.0	-4.9	0.8
Nebraska	285	711	376	568	51.1	-20.1	99.3
North Dakota	146	189	154	166	7.8	-12.2	13.7
Ohio	1,396	1,785	1,330	1,392	4.7	-22.0	-0.3
South Dakota	207	197	189	253	33.9	28.4	22.2
Wisconsin	4,226	4,618	4,005	4,504	12.5	-2.5	6.6
Total	21,069	22,753	19,912	21,351	7.2	-6.2	1.3

TABLE 2

TOTAL STOPOVER ARRIVALS BY PERMANENT RESIDENCE

	JANUARY						
	2000	2001	2002	2003	2003/02 %Change	2003/01 %Change	2003/00 %Change
<u>SOUTH (MIAMI)</u>							
Alabama	347	314	280	358	27.9	14.0	3.2
Arkansas	147	147	157	201	28.0	36.7	36.7
Florida	6,784	6,415	6,709	6,803	1.4	6.0	0.3
Georgia	1,892	2,123	1,896	2,654	40.0	25.0	40.3
Louisiana	283	295	279	287	2.9	-2.7	1.4
Mississippi	80	104	113	136	20.4	30.8	70.0
North Carolina	829	1,011	1,063	1,268	19.3	25.4	53.0
Oklahoma	142	190	190	216	13.7	13.7	52.1
Puerto Rico	102	135	119	82	-31.1	-39.3	-19.6
South Carolina	336	477	394	478	21.3	0.2	42.3
Tennessee	542	536	599	797	33.1	48.7	47.0
Texas	1,359	1,169	1,521	1,358	-10.7	16.2	-0.1
Total	12,843	12,916	13,320	14,638	9.9	13.3	14.0
<u>WEST (LOS ANGELES)</u>							
Alaska	33	32	30	38	26.7	18.8	15.2
Arizona	221	464	311	261	-16.1	-43.8	18.1
California	2,102	2,580	2,065	2,226	7.8	-13.7	5.9
Colorado	449	566	467	508	8.8	-10.2	13.1
Hawaii	14	17	11	9	-18.2	-47.1	-35.7
Idaho	107	201	89	169	89.9	-15.9	57.9
Montana	57	85	77	77	0.0	-9.4	35.1
Nevada	133	140	124	139	12.1	-0.7	4.5
New Mexico	65	130	46	58	26.1	-55.4	-10.8
Oregon	114	184	145	142	-2.1	-22.8	24.6
Utah	102	97	126	172	36.5	77.3	68.6
Washington	296	303	280	277	-1.1	-8.6	-6.4
Wyoming	23	27	32	34	6.3	25.9	47.8
Total	3,716	4,826	3,803	4,110	8.1	-14.8	10.6
TOTAL U.S.A.	62,998	68,568	62,757	68,596	9.3	0.0	8.9

TABLE 2

TOTAL STOPOVER ARRIVALS BY PERMANENT RESIDENCE

	<u>JANUARY</u>				2003/02	2003/01	2003/00
	<u>2000</u>	<u>2001</u>	<u>2002</u>	<u>2003</u>	<u>%Change</u>	<u>%Change</u>	<u>%Change</u>
<u>CANADA (TORONTO)</u>							
Alberta	456	604	468	609	30.1	0.8	33.6
British Columbia	342	395	354	363	2.5	-8.1	6.1
Manitoba	519	576	291	606	108.2	5.2	16.8
New Brunswick	80	129	119	99	-16.8	-23.3	23.8
Newfoundland	25	31	53	23	-56.6	-25.8	-8.0
Nova Scotia	121	123	152	110	-27.6	-10.6	-9.1
Ontario	7,760	9,614	7,866	7,873	0.1	-18.1	1.5
P.E. Island	8	17	17	4	-76.5	-76.5	-50.0
Quebec	1,479	2,152	1,671	1,621	-3.0	-24.7	9.6
Saskatchewan	135	258	151	255	68.9	-1.2	88.9
Other Canada	29	55	39	26	-33.3	-52.7	-10.3
Total	10,954	13,954	11,181	11,589	3.6	-16.9	5.8
<u>LONDON OFFICE</u>							
<u>Northern Europe</u>							
U.K.	9,360	9,156	8,286	9,525	15.0	4.0	1.8
Denmark	337	61	56	44	-21.4	-27.9	-86.9
Finland	35	48	44	74	68.2	54.2	111.4
Norway	75	120	57	71	24.6	-40.8	-5.3
Sweden	164	136	94	103	9.6	-24.3	-37.2
<u>Southern Europe</u>							
Greece	30	22	19	17	-10.5	-22.7	-43.3
Italy	1,875	1,476	1,181	3,129	164.9	112.0	66.9
Portugal	31	13	11	30	172.7	130.8	-3.2
Spain	79	153	154	97	-37.0	-36.6	22.8
<u>Western Europe</u>							
Austria	375	294	224	277	23.7	-5.8	-26.1
Belgium	107	76	75	94	25.3	23.7	-12.1
France	431	194	230	246	7.0	26.8	-42.9
Germany	3,132	1,818	1,267	1,672	32.0	-8.0	-46.6
Luxemburg	8	9	2	8	300.0	-11.1	0.0
Netherlands	371	208	144	231	60.4	11.1	-37.7
Switzerland	390	300	143	199	39.2	-33.7	-49.0
<u>Central/East Europe</u>							
Czechoslovakia	21	52	8	25	212.5	-51.9	19.0
Hungary	71	23	34	29	-14.7	26.1	-59.2
Poland	31	65	38	114	200.0	75.4	267.7
Russia	130	162	177	202	14.1	24.7	55.4
Other Europe	94	102	76	99	30.3	-2.9	5.3
Total	17,147	14,488	12,320	16,286	32.2	12.4	-5.0

TABLE 2

TOTAL STOPOVER ARRIVALS BY PERMANENT RESIDENCE

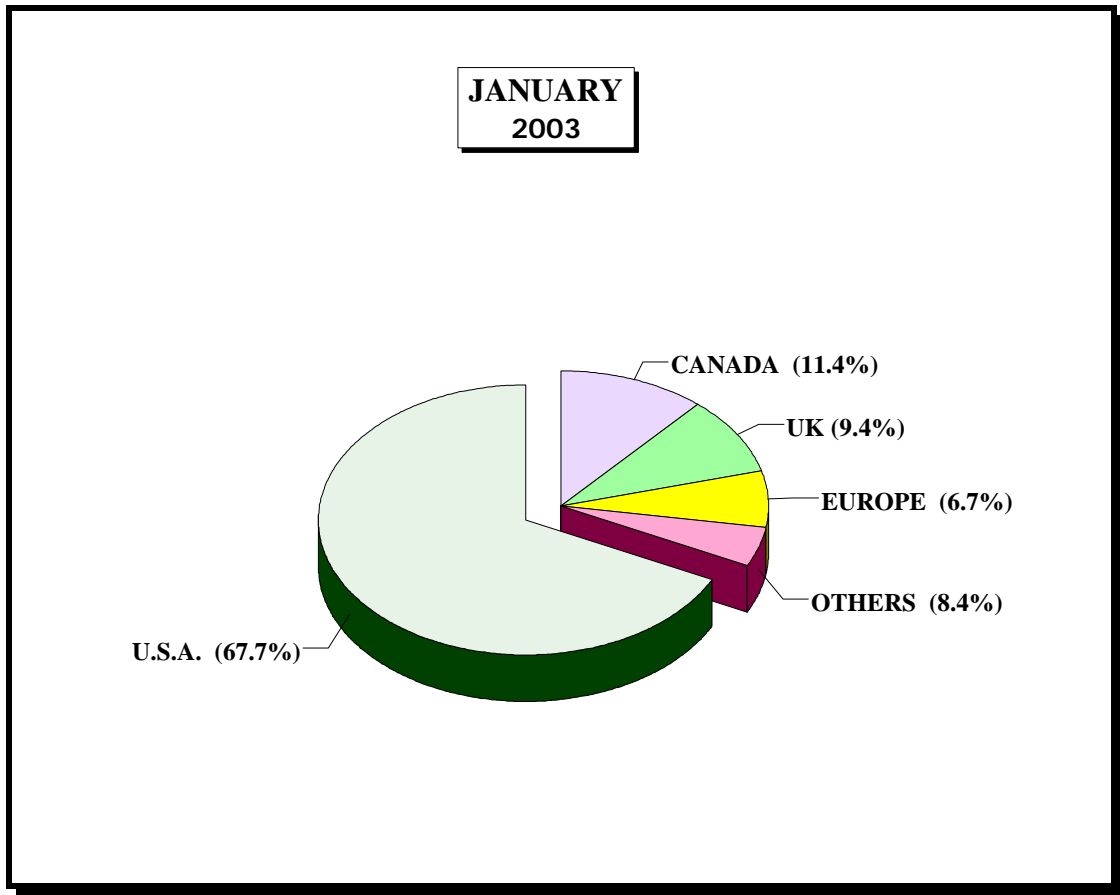
	<u>JANUARY</u>				2003/02	2003/01	2003/00
	<u>2000</u>	<u>2001</u>	<u>2002</u>	<u>2003</u>	<u>%Change</u>	<u>%Change</u>	<u>%Change</u>
<u>LATIN AMERICA</u>							
<u>CENTRAL AMERICA</u>							
Mexico	186	163	94	112	19.1	-31.3	-39.8
Belize	24	39	35	127	262.9	225.6	429.2
Costa Rica	50	42	87	50	-42.5	19.0	0.0
El Salvador	5	8	30	10	-66.7	25.0	100.0
Guatemala	23	25	27	18	-33.3	-28.0	-21.7
Honduras	14	8	16	17	6.3	112.5	21.4
Nicaragua	5	5	13	3	-76.9	-40.0	-40.0
Panama	119	93	86	98	14.0	5.4	-17.6
Total	426	383	388	435	12.1	13.6	2.1
<u>SOUTH AMERICA</u>							
Argentina	195	177	62	69	11.3	-61.0	-64.6
Bolivia	13	17	5	6	20.0	-64.7	-53.8
Brazil	97	102	73	60	-17.8	-41.2	-38.1
Chile	103	77	63	27	-57.1	-64.9	-73.8
Colombia	182	142	76	197	159.2	38.7	8.2
Ecuador	7	12	19	6	-68.4	-50.0	-14.3
Guyana	102	128	110	154	40.0	20.3	51.0
Paraguay	6	6	1	3	200.0	-50.0	-50.0
Peru	26	19	22	30	36.4	57.9	15.4
Surinam	13	34	2	25	1150.0	-26.5	92.3
Uruguay	18	3	10	2	-80.0	-33.3	-88.9
Venezuela	57	84	94	73	-22.3	-13.1	28.1
Other South America	0	0	0	0	-	-	-
Total	819	801	537	652	21.4	-18.6	-20.4
Total Latin America	1,245	1,184	925	1,087	17.5	-8.2	-12.7

TABLE 2

TOTAL STOPOVER ARRIVALS BY PERMANENT RESIDENCE

	JANUARY						
	2000	2001	2002	2003	2003/02 %Change	2003/01 %Change	2003/00 %Change
CARIBBEAN							
Antigua	113	83	90	110	22.2	32.5	-2.7
Bahamas	444	388	231	196	-15.2	-49.5	-55.9
Barbados	257	279	322	353	9.6	26.5	37.4
Bermuda	106	106	99	148	49.5	39.6	39.6
British Virgin Is.	15	35	16	41	156.3	17.1	173.3
Cayman Is.	575	687	552	763	38.2	11.1	32.7
Dominica	18	28	15	23	53.3	-17.9	27.8
Grenada	45	45	46	41	-10.9	-8.9	-8.9
Monsterrat	9	11	6	7	16.7	-36.4	-22.2
St. Kitts/Nevis/Anguilla	42	32	38	61	60.5	90.6	45.2
St. Lucia	134	82	102	140	37.3	70.7	4.5
St. Vincent	43	26	53	37	-30.2	42.3	-14.0
Turks & Caicos Is.	17	42	26	49	88.5	16.7	188.2
Trinidad & Tobago	398	420	425	519	22.1	23.6	30.4
Comm. Caribbean	2,216	2,264	2,021	2,488	23.1	9.9	12.3
Aruba	7	18	18	31	72.2	72.2	342.9
Cuba	134	56	33	77	133.3	37.5	-42.5
Curacao	26	30	43	82	90.7	173.3	215.4
Dominican Republic	65	79	45	45	0.0	-43.0	-30.8
Guadelope	5	1	15	3	-80.0	200.0	-40.0
Haiti	28	34	42	47	11.9	38.2	67.9
St. Maarten	20	27	22	21	-4.5	-22.2	5.0
All other Caribbean	33	22	26	27	3.8	22.7	-18.2
Other Caribbean	318	267	244	333	36.5	24.7	4.7
TOTAL CARIBBEAN	2,534	2,531	2,265	2,821	24.5	11.5	11.3
OTHER COUNTRIES							
African Countries	107	95	68	68	0.0	-28.4	-36.4
Isreal	74	102	58	46	-20.7	-54.9	-37.8
Saudi Arabia	1	9	0	0	-	-100.0	-100.0
Turkey	31	24	12	16	33.3	-33.3	-48.4
Other Middle East	13	34	14	13	-7.1	-61.8	0.0
India & Pakistan	51	52	31	24	-22.6	-53.8	-52.9
Japan	564	495	244	318	30.3	-35.8	-43.6
China	57	33	28	91	225.0	175.8	59.6
Taiwan	6	12	7	6	-14.3	-50.0	0.0
Korea	33	28	10	20	100.0	-28.6	-39.4
Philippines	81	42	28	151	439.3	259.5	86.4
Singapore	3	16	2	10	400.0	-37.5	233.3
Other Asia	26	27	10	15	50.0	-44.4	-42.3
Australia	140	158	123	134	8.9	-15.2	-4.3
New Zealand	33	20	13	13	0.0	-35.0	-60.6
All Other Ctries	2	4	1	2	100.0	-50.0	0.0
Total	1,222	1,151	649	927	42.8	-19.5	-24.1
GRAND TOTAL	96,100	101,876	90,097	101,306	12.4	-0.6	5.4

STOPOVER VISITORS BY MARKET SHARE



Country	January 2003	% Share	January 2002	% Share	January 2001	% Share	%Change 2003/02
U.S.A	68,596	67.7%	62,757	69.7%	68,568	67.3%	9.3%
CANADA	11,589	11.4%	11,181	12.4%	13,954	13.7%	3.6%
U.K.	9,525	9.4%	8,286	9.2%	9,156	9.0%	15.0%
EUROPE	6,761	6.7%	4,034	4.5%	5,332	5.2%	67.6%
OTHERS	4,835	4.8%	3,839	4.3%	4,866	4.8%	25.9%
Total	101,306	100.0%	90,097	100.0%	101,876	100.0%	12.4%

TABLE 3

<u>AVERAGE LENGTH OF STAY (Nights)</u>					
<u>FOREIGN NATIONALS</u>					
	All Types of Accommodation			Hotel	
	2002	2003		2002	2003
January	10.4	10.1		6.7	6.6

Note: LENGTH OF STAY IS BASED ON INTENDED LENGTH OF STAY

Stopover Arrivals

By Intended Resort Area of Stay

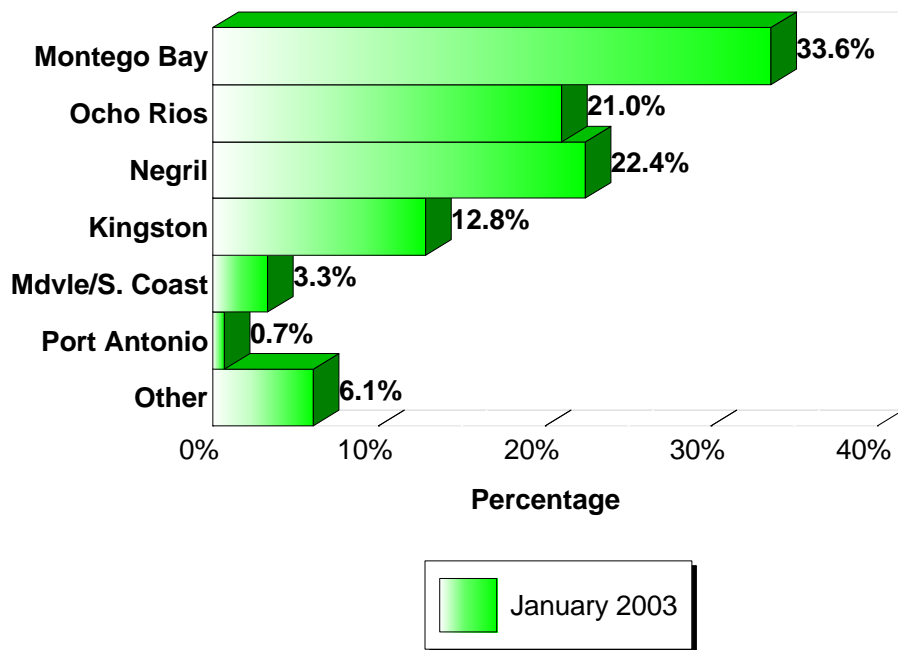


Fig. 5

STOPOVER ARRIVALS BY INTENDED AREA OF STAY

Area	JANUARY		JANUARY		JANUARY		%Change 2002/01
	2003	%Share	2002	%Share	2001	%Share	
Montego Bay	34,033	33.6%	28,067	31.2%	37,695	37.0%	21.3%
Ocho Rios	21,266	21.0%	19,431	21.6%	22,198	21.8%	9.4%
Negril	22,728	22.4%	20,403	22.6%	20,589	20.2%	11.4%
Kingston	12,997	12.8%	12,309	13.7%	11,926	11.7%	5.6%
Mdvle/S. Coast	3,356	3.3%	3,202	3.6%	3,006	3.0%	4.8%
Port Antonio	749	0.7%	936	1.0%	925	0.9%	-20.0%
Other	6,177	6.1%	5,749	6.4%	5,537	5.4%	7.4%
Total	101,306	100.0%	90,097	100.0%	101,876	100.0%	12.4%