

MONTHLY STATISTICAL REPORT

Volume X111, Issue II
February 2003

TOURIST (Stopovers)

Stopover arrivals in February 2003 were **111,458**, an increase of **11%** over the **100,010** recorded for February 2002.

United States

Stopover arrivals from the United States market increased by **11%** in February with a total of **78,955** visitors compared to the **71,386** visitors who came in February 2002. Except for the West which declined by **3%**, all the other marketing regions recorded increases. The Northeast increased by **14%**, the Midwest by **13%** and the South by **3%**.

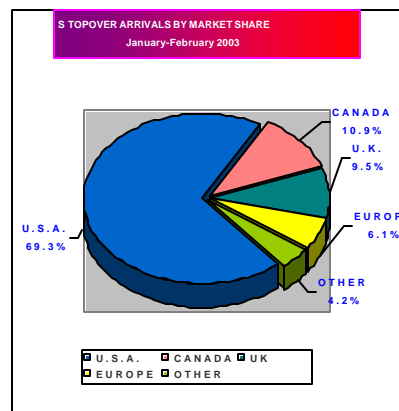
For the January to February period the US market increased by **10%**. Total visitors from that market for the period was **147,551** compared to **134,143** for the corresponding period in 2002. The Northeast increased by **13%**, the Midwest by **10%**, the South by **6%** and the West by **2%**.

Canada

In February, the Canadian market increased by **5%** but was down by **17%** against February 2001. Total stopovers from the Canadian market in February were **11,506** compared to **11,008** in 2002. While the leading province of Ontario declined by **6%**, the second most important visitor-producing province of Quebec increased by **6%**. The other three leading provinces also recorded increases. Manitoba increased by **143%**, Alberta by **14%**, and British Columbia by

15%. The provinces of New Brunswick, Nova Scotia, Newfoundland and Saskatchewan also showed good growth from relatively small bases.

Cumulatively, the Canadian market increased by **4%** in the January to February period with a total of **23,095** stopovers compared to **22,189** in 2002.



Europe

The European market showed remarkable improvement when it recorded a **22%** increase in February 2003. The market provided a total of **16,812** stopover visitors compared to the **13,781** recorded in February 2002 and was also up against the **15,420** stopovers who came in February 2001. The United Kingdom and Germany increased by **10%** and **16%** respectively. All the main European country markets except Belgium recorded increases. Italy increased by **117%**, Spain by **33%**, Switzerland by **35%**, and Austria remained flat, despite from relatively small bases.

Cumulatively, for the January to February period, the European market increased by **27%**. Total stopovers for the period was **33,098**, compared to **26,101** in 2002. Both the United Kingdom and Germany recorded increases. The United Kingdom with a total of **20,189** stopovers recorded an increase of **13%** while Germany with **3,121** visitors recorded an increase of **24%**.

Latin America

The Latin American market increased by **6%** in February with a total of **777** stopovers compared to **735** in February 2002. While Argentina increased by **18%**, the other four leading countries declined in February. Mexico (**21%**), Colombia (**38%**), Brazil (**5%**) and Chile (**14%**).

For the January to February period, the Latin American market increased by **12%** with a total of **1,864** visitors compared to **1,660** for the corresponding period in 2002.

While cruise passenger arrivals to Montego Bay in the two-month period almost doubled with a 94% increase, arrivals to Ocho Rios scored a healthy 22% for that period.

The Caribbean

Visitors to Jamaica from the Caribbean region increased by **14%** in February. A total of **2,594** visitors from other Caribbean countries visited Jamaica, up from **2,280** in February 2002. Arrivals were down by **3%** against February 2000.

The major Caribbean countries which provided visitors to Jamaica in February were: the Cayman Islands (**807**), Trinidad and Tobago (**455**), Barbados (**274**), the Bahamas (**163**), Antigua (**79**), Bermuda (**135**), and St. Lucia (**119**). Except for Bermuda, St. Lucia and Trinidad and Tobago which increased in February, all the other major Caribbean countries recorded declines against February 2002.

Cumulatively, the Caribbean stopover arrivals to Jamaica in the January to February period increased by **19%** moving from **4,545** in 2002 to **5,415** in 2003. In the period under review, the top Caribbean countries that provided stopover visitors to Jamaica were the Cayman Islands with **1,570**, Trinidad and Tobago with **974**, the Bahamas with **359** and Barbados with **627**.

Japan

The Japanese market declined by **5%** in February with a total of **368** stopovers compared to **386** in February 2002 but was down by **43%** against the **643** for the corresponding period in 2001.

Other Countries

Of the other countries, Australia with a total of **219** stopovers in January to February period recorded a decline of **6%** against

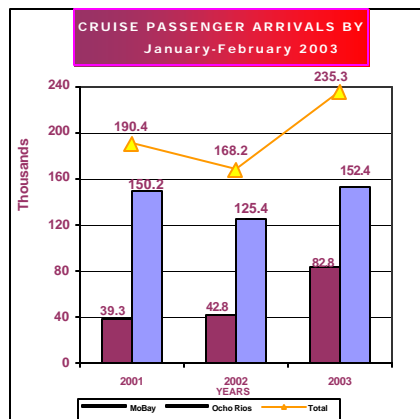
the **232** who came in January to February 2002.

Market Share

The market share of stopover visitors for the January to February period were as follows:

USA **69.3%**; Canada **10.9%**; UK **9.5%**; Continental Europe **6.1%** the Caribbean **2.5%**; Latin America **0.9%**; Japan **0.3%** and Other Countries **0.5%**.

Cruise Passengers



A total of **116,451** cruise passengers visited Jamaica in February 2003. This represents a **52%** increase against the **76,799** recorded for February 2002. Cumulatively, a total of **235,285** cruise passengers visited Jamaica in the January to February period. A **40%** increase against the **168,198** recorded for the corresponding period in 2002.

A total of **77,390** cruise passengers visited the port of Ocho Rios in February, an increase of **31%** over the **59,151** recorded for February 2002. Montego Bay recorded a total of **39,006** cruise passengers for the month, an increase of some **121%** against the **17,648** recorded for 2002.

For the January to February period cruise passenger arrivals to the port of Ocho Rios was **152,397** an increase of **22%** against the **125,417** for the corresponding period in 2002. In the case of Montego Bay, cruise passenger arrivals was **82,833** an increase of **94%** against the **42,781** recorded for the same period in 2002.

Length of Stay

The average length of stay of stopovers in February was **8.8** nights against **9.0** for February 2002. The average length of stay in hotels was **6.3** nights compared to **6.5** nights in February 2002. Cumulatively, the average length of stay for the January to February period was **9.4** nights compared to **9.6** nights in 2002.

First and Repeat Visitors

Approximately **53%** or **56,644** of the **106,440** foreign nationals who visited Jamaica in February were first-time visitors and the other **47%** or **49,796** were repeat guests.

Cumulatively, in the January to February period, some **53%** of the **202,315** Foreign Nationals who visited the island were first-time guests and **47%** were repeat guests.

TABLE 1

TOURIST ARRIVALS

January - February
2003

Month	<----- Stopovers ----->						Total Stopover Arrivals	+/- 2003/02	+/- 2003/01
	Foreign Nationals	+/- 2003/02	+/- 2003/01	Non-Resident Jamaicans	+/- 2003/02	+/- 2003/01			
January	95,875	12.6%	-0.9%	5,431	9.0%	5.2%	101,306	12.4%	-0.6%
February	106,440	11.7%	-1.0%	5,018	6.0%	-14.3%	111,458	11.4%	-1.7%
Jan.-Feb.	202,315	12.2%	-0.9%	10,449	7.5%	-5.2%	212,764	11.9%	-1.1%

STOPOVER ARRIVALS FOREIGN NATIONALS

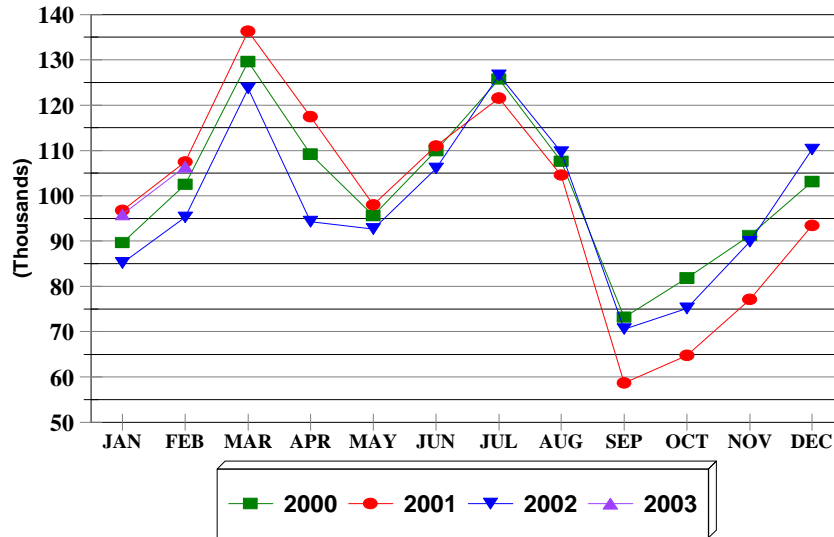


FIG. 1

STOPOVER ARRIVALS NON-RESIDENT JAMAICANS

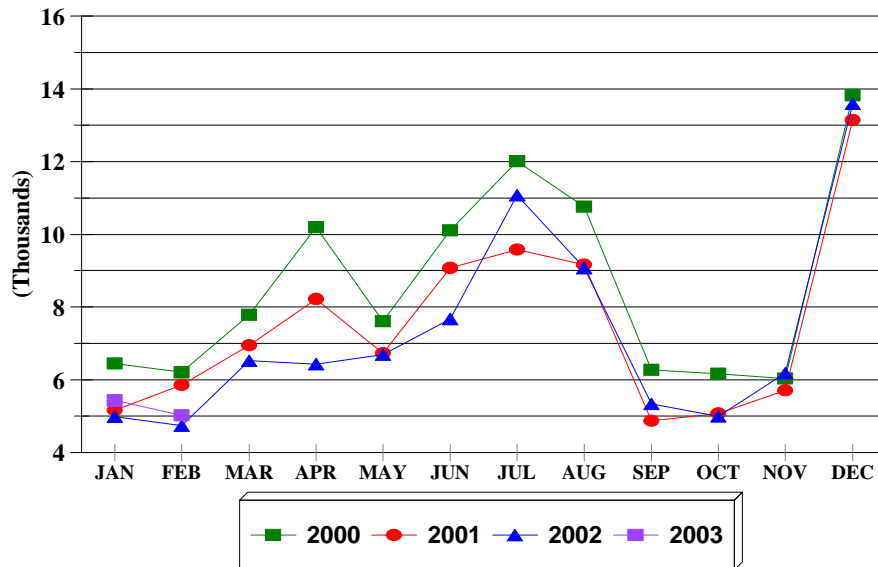


FIG. 1a

TABLE 1.1

First & Repeat Visit to Jamaica

FOREIGN NATIONALS

2003

	Arrivals				TOTAL	% SHARE	
	First Visit	+/-	Repeat Visit	+/-		First Visit	Repeat Visit
Jan.	51,389	-4.1	44,486	3.2	95,875	53.6	46.4
Feb.	56,644	-4.7	49,796	3.6	106,440	53.2	46.8
Jan.-Feb.	108,033	-4.4	94,282	3.4	202,315	53.4	46.6

TABLE 1.2

**STOPOVER ARRIVALS BY MARKET REGION
AND MONTH OF ARRIVAL 2003**

	U.S.A.				Canada	U.K. Europe	Latin America	Caribbean	Asia	Other Countries	Total
	Northeast	Mid-West	South	West							
January	28,497	21,351	14,638	4,110	11,589	16,286	1,087	2,821	635	292	101,306
February	35,006	25,007	14,940	4,002	11,506	16,812	777	2,594	578	236	111,458
Jan.-Feb.	63,503	46,358	29,578	8,112	23,095	33,098	1,864	5,415	1,213	528	212,764
+/- %	12.7%	10.3%	6.3%	2.3%	4.1%	26.8%	12.3%	19.1%	39.4%	-11.9%	11.9%

TABLE 2

TOTAL STOPOVER ARRIVALS BY PERMANENT RESIDENCE

	FEBRUARY							JANUARY - FEBRUARY						
	2000	2001	2002	2003	% Change			2000	2001	2002	2003	% Change		
					2003/02	2003/01	2003/00					2003/02	2003/01	2003/00
U.S.A.														
<u>NORTHEAST (NEW YORK)</u>														
Connecticut	2,150	2,174	1,891	2,204	16.6	1.4	2.5	3,347	3,507	3,146	3,729	18.5	6.3	11.4
Delaware	402	420	285	412	44.6	-1.9	2.5	703	804	596	789	32.4	-1.9	12.2
Maine	312	331	240	310	29.2	-6.3	-0.6	609	560	444	527	18.7	-5.9	-13.5
Maryland	2,165	2,226	2,088	2,692	28.9	20.9	24.3	4,239	4,602	4,465	5,118	14.6	11.2	20.7
Massachusetts	2,889	3,661	3,030	3,195	5.4	-12.7	10.6	5,412	6,390	5,581	5,815	4.2	-9.0	7.4
New Hampshire	603	686	571	605	6.0	-11.8	0.3	961	1,162	953	919	-3.6	-20.9	-4.4
New Jersey	4,433	4,746	4,105	4,828	17.6	1.7	8.9	7,733	8,577	7,818	8,840	13.1	3.1	14.3
New York	13,850	14,641	11,900	13,321	11.9	-9.0	-3.8	23,969	24,838	21,284	23,858	12.1	-3.9	-0.5
Pennsylvania	3,828	4,303	4,184	4,801	14.7	11.6	25.4	7,108	8,502	7,689	9,173	19.3	7.9	29.1
Rhode Island	334	356	301	320	6.3	-10.1	-4.2	615	589	561	642	14.4	9.0	4.4
Vermont	296	283	185	268	44.9	-5.3	-9.5	430	422	280	368	31.4	-12.8	-14.4
Virginia	1,166	1,412	1,365	1,566	14.7	10.9	34.3	2,259	2,896	2,663	2,821	5.9	-2.6	24.9
Washington D.C.	350	350	338	354	4.7	1.1	1.1	660	697	646	700	8.4	0.4	6.1
West Virginia	144	162	140	130	-7.1	-19.8	-9.7	247	278	219	204	-6.8	-26.6	-17.4
Total	32,922	35,751	30,623	35,006	14.3	-2.1	6.3	58,292	63,824	56,345	63,503	12.7	-0.5	8.9
<u>MIDWEST (CHICAGO)</u>														
Illinois	4,838	5,017	4,536	5,046	11.2	0.6	4.3	10,099	9,991	9,281	10,063	8.4	0.7	-0.4
Indiana	1,267	967	1,267	1,257	-0.8	30.0	-0.8	2,181	2,137	2,270	2,358	3.9	10.3	8.1
Iowa	766	924	1,038	1,388	33.7	50.2	81.2	1,596	2,072	2,222	2,488	12.0	20.1	55.9
Kansas	347	369	271	381	40.6	3.3	9.8	698	805	551	707	28.3	-12.2	1.3
Kentucky	275	520	550	473	-14.0	-9.0	72.0	610	841	850	828	-2.6	-1.5	35.7
Michigan	3,996	4,644	3,498	4,223	20.7	-9.1	5.7	6,594	7,108	5,615	6,299	12.2	-11.4	-4.5
Minnesota	3,578	3,552	3,213	3,697	15.1	4.1	3.3	6,576	6,679	6,048	6,656	10.1	-0.3	1.2
Missouri	1,222	1,470	1,410	1,891	34.1	28.6	54.7	2,744	3,083	2,804	3,425	22.1	11.1	24.8
Nebraska	433	405	311	488	56.9	20.5	12.7	718	1,116	687	1,056	53.7	-5.4	47.1
North Dakota	203	170	157	200	27.4	17.6	-1.5	349	359	311	366	17.7	1.9	4.9
Ohio	1,679	1,771	1,947	1,738	-10.7	-1.9	3.5	3,075	3,556	3,277	3,130	-4.5	-12.0	1.8
South Dakota	174	198	181	311	71.8	57.1	78.7	381	395	370	564	52.4	42.8	48.0
Wisconsin	4,030	4,102	3,736	3,914	4.8	-4.6	-2.9	8,256	8,720	7,741	8,418	8.7	-3.5	2.0
Total	22,808	24,109	22,115	25,007	13.1	3.7	9.6	43,877	46,862	42,027	46,358	10.3	-1.1	5.7

TABLE 2

TOTAL STOPOVER ARRIVALS BY PERMANENT RESIDENCE

	FEBRUARY							JANUARY - FEBRUARY						
	2000	2001	2002	2003	% Change			2000	2001	2002	2003	% Change		
					2003/02	2003/01	2003/00					2003/02	2003/01	2003/00
<u>SOUTH (MIAMI)</u>														
Alabama	337	559	438	473	8.0	-15.4	40.4	684	873	718	831	15.7	-4.8	21.5
Arkansas	133	136	127	189	48.8	39.0	42.1	280	283	284	390	37.3	37.8	39.3
Florida	6,839	7,346	6,698	7,037	5.1	-4.2	2.9	13,623	13,761	13,407	13,840	3.2	0.6	1.6
Georgia	1,879	2,403	2,368	2,267	-4.3	-5.7	20.6	3,771	4,526	4,264	4,921	15.4	8.7	30.5
Louisiana	242	276	395	355	-10.1	28.6	46.7	525	571	674	642	-4.7	12.4	22.3
Mississippi	119	138	148	130	-12.2	-5.8	9.2	199	242	261	266	1.9	9.9	33.7
North Carolina	1,073	1,282	1,053	1,265	20.1	-1.3	17.9	1,902	2,293	2,116	2,533	19.7	10.5	33.2
Oklahoma	202	193	170	190	11.8	-1.6	-5.9	344	383	360	406	12.8	6.0	18.0
Puerto Rico	166	97	148	101	-31.8	4.1	-39.2	268	232	267	183	-31.5	-21.1	-31.7
South Carolina	422	515	448	557	24.3	8.2	32.0	758	992	842	1,035	22.9	4.3	36.5
Tennessee	644	725	830	801	-3.5	10.5	24.4	1,186	1,261	1,429	1,598	11.8	26.7	34.7
Texas	1,430	1,356	1,695	1,575	-7.1	16.2	10.1	2,789	2,525	3,216	2,933	-8.8	16.2	5.2
Total	13,486	15,026	14,518	14,940	2.9	-0.6	10.8	26,329	27,942	27,838	29,578	6.3	5.9	12.3
<u>WEST (LOS ANGELES)</u>														
Alaska	36	19	27	47	74.1	147.4	30.6	69	51	57	85	49.1	66.7	23.2
Arizona	254	380	320	254	-20.6	-33.2	0.0	475	844	631	515	-18.4	-39.0	8.4
California	2,099	2,060	2,118	2,197	3.7	6.7	4.7	4,201	4,640	4,183	4,423	5.7	-4.7	5.3
Colorado	443	531	708	441	-37.7	-16.9	-0.5	892	1,097	1,175	949	-19.2	-13.5	6.4
Hawaii	4	6	10	20	100.0	233.3	400.0	18	23	21	29	38.1	26.1	61.1
Idaho	98	131	101	108	6.9	-17.6	10.2	205	332	190	277	45.8	-16.6	35.1
Montana	58	53	60	100	66.7	88.7	72.4	115	138	137	177	29.2	28.3	53.9
Nevada	120	79	98	161	64.3	103.8	34.2	253	219	222	300	35.1	37.0	18.6
New Mexico	94	76	59	49	-16.9	-35.5	-47.9	159	206	105	107	1.9	-48.1	-32.7
Oregon	199	144	176	167	-5.1	16.0	-16.1	313	328	321	309	-3.7	-5.8	-1.3
Utah	105	91	94	115	22.3	26.4	9.5	207	188	220	287	30.5	52.7	38.6
Washington	410	403	344	317	-7.8	-21.3	-22.7	706	706	624	594	-4.8	-15.9	-15.9
Wyoming	33	29	15	26	73.3	-10.3	-21.2	56	56	47	60	27.7	7.1	7.1
Total	3,953	4,002	4,130	4,002	-3.1	0.0	1.2	7,669	8,828	7,933	8,112	2.3	-8.1	5.8
TOTAL U.S.A.	73,169	78,888	71,386	78,955	10.6	0.1	7.9	136,167	147,456	134,143	147,551	10.0	0.1	8.4

TABLE 2

TOTAL STOPOVER ARRIVALS BY PERMANENT RESIDENCE

	FEBRUARY							JANUARY - FEBRUARY						
	2000	2001	2002	2003	% Change			2000	2001	2002	2003	% Change		
					2003/02	2003/01	2003/00					2003/02	2003/01	2003/00
CANADA (TORONTO)														
Alberta	481	636	455	520	14.3	-18.2	8.1	937	1,240	923	1,129	22.3	-9.0	20.5
British Columbia	351	434	269	309	14.9	-28.8	-12.0	693	829	623	672	7.9	-18.9	-3.0
Manitoba	440	595	321	779	142.7	30.9	77.0	959	1,171	612	1,385	126.3	18.3	44.4
New Brunswick	220	239	107	149	39.3	-37.7	-32.3	300	368	226	248	9.7	-32.6	-17.3
Newfoundland	44	55	72	111	54.2	101.8	152.3	69	86	125	134	7.2	55.8	94.2
Nova Scotia	356	397	199	282	41.7	-29.0	-20.8	477	520	351	392	11.7	-24.6	-17.8
Ontario	8,595	9,251	7,921	7,456	-5.9	-19.4	-13.3	16,355	18,865	15,787	15,329	-2.9	-18.7	-6.3
P.E. Island	18	15	13	22	69.2	46.7	22.2	26	32	30	26	-13.3	-18.8	0.0
Quebec	1,660	1,858	1,453	1,533	5.5	-17.5	-7.7	3,139	4,010	3,124	3,154	1.0	-21.3	0.5
Saskatchewan	254	306	155	314	102.6	2.6	23.6	389	564	306	569	85.9	0.9	46.3
Other Canada	25	54	43	31	-27.9	-42.6	24.0	54	109	82	57	-30.5	-47.7	5.6
Total	12,444	13,840	11,008	11,506	4.5	-16.9	-7.5	23,398	27,794	22,189	23,095	4.1	-16.9	-1.3
LONDON OFFICE														
Northern Europe														
U.K.	11,113	9,712	9,665	10,664	10.3	9.8	-4.0	20,473	18,868	17,951	20,189	12.5	7.0	-1.4
Denmark	76	105	65	43	-33.8	-59.0	-43.4	413	166	121	87	-28.1	-47.6	-78.9
Finland	48	40	37	94	154.1	135.0	95.8	83	88	81	168	107.4	90.9	102.4
Norway	139	66	94	143	52.1	116.7	2.9	214	186	151	214	41.7	15.1	0.0
Sweden	163	252	173	93	-46.2	-63.1	-42.9	327	388	267	196	-26.6	-49.5	-40.1
Southern Europe														
Greece	36	23	20	74	270.0	221.7	105.6	66	45	39	91	133.3	102.2	37.9
Italy	1,565	1,545	1,213	2,627	116.6	70.0	67.9	3,440	3,021	2,394	5,756	140.4	90.5	67.3
Portugal	16	20	15	54	260.0	170.0	237.5	47	33	26	84	223.1	154.5	78.7
Spain	85	130	77	102	32.5	-21.5	20.0	164	283	231	199	-13.9	-29.7	21.3
Western Europe														
Austria	360	261	196	196	0.0	-24.9	-45.6	735	555	420	473	12.6	-14.8	-35.6
Belgium	86	80	108	90	-16.7	12.5	4.7	193	156	183	184	0.5	17.9	-4.7
France	526	327	274	263	-4.0	-19.6	-50.0	957	521	504	509	1.0	-2.3	-46.8
Germany	2,802	2,137	1,248	1,449	16.1	-32.2	-48.3	5,934	3,955	2,515	3,121	24.1	-21.1	-47.4
Luxemburg	6	8	3	6	100.0	-25.0	0.0	14	17	5	14	180.0	-17.6	0.0
Netherlands	365	217	179	325	81.6	49.8	-11.0	736	425	323	556	72.1	30.8	-24.5
Switzerland	366	230	143	193	35.0	-16.1	-47.3	756	530	286	392	37.1	-26.0	-48.1
Central/East Europe														
Czechoslovakia	24	34	52	64	23.1	88.2	166.7	45	86	60	89	48.3	3.5	97.8
Hungary	10	29	30	15	-50.0	-48.3	50.0	81	52	64	44	-31.3	-15.4	-45.7
Poland	111	26	75	79	5.3	203.8	-28.8	142	91	113	193	70.8	112.1	35.9
Russia	81	67	43	79	83.7	17.9	-2.5	211	229	220	281	27.7	22.7	33.2
Other Europe	101	111	71	159	123.9	43.2	57.4	195	213	147	258	75.5	21.1	32.3
Total	18,079	15,420	13,781	16,812	22.0	9.0	-7.0	35,226	29,908	26,101	33,098	26.8	10.7	-6.0

TABLE 2

TOTAL STOPOVER ARRIVALS BY PERMANENT RESIDENCE

	FEBRUARY							JANUARY - FEBRUARY						
	2000	2001	2002	2003	% Change			2000	2001	2002	2003	% Change		
					2003/02	2003/01	2003/00					2003/02	2003/01	2003/00
LATIN AMERICA														
CENTRAL AMERICA														
Mexico	172	182	130	103	-20.8	-43.4	-40.1	358	345	224	215	-4.0	-37.7	-39.9
Belize	42	28	28	95	239.3	239.3	126.2	66	67	63	222	252.4	231.3	236.4
Costa Rica	60	81	61	47	-23.0	-42.0	-21.7	110	123	148	97	-34.5	-21.1	-11.8
El Salvador	10	15	10	8	-20.0	-46.7	-20.0	15	23	40	18	-55.0	-21.7	20.0
Guatemala	24	30	15	14	-6.7	-53.3	-41.7	47	55	42	32	-23.8	-41.8	-31.9
Honduras	18	12	9	11	22.2	-8.3	-38.9	32	20	25	28	12.0	40.0	-12.5
Nicaragua	11	4	4	3	-25.0	-25.0	-72.7	16	9	17	6	-64.7	-33.3	-62.5
Panama	139	132	74	95	28.4	-28.0	-31.7	258	225	160	193	20.6	-14.2	-25.2
Total	476	484	331	376	13.6	-22.3	-21.0	902	867	719	811	12.8	-6.5	-10.1
SOUTH AMERICA														
Argentina	151	141	40	47	17.5	-66.7	-68.9	346	318	102	116	13.7	-63.5	-66.5
Bolivia	2	3	4	8	100.0	166.7	300.0	15	20	9	14	55.6	-30.0	-6.7
Brazil	67	80	79	75	-5.1	-6.3	11.9	164	182	152	135	-11.2	-25.8	-17.7
Chile	125	85	70	60	-14.3	-29.4	-52.0	228	162	133	87	-34.6	-46.3	-61.8
Colombia	101	83	32	20	-37.5	-75.9	-80.2	283	225	108	217	100.9	-3.6	-23.3
Ecuador	8	16	12	0	-100.0	-100.0	-100.0	15	28	31	6	-80.6	-78.6	-60.0
Guyana	138	114	76	104	36.8	-8.8	-24.6	240	242	186	258	38.7	6.6	7.5
Paraguay	0	0	3	2	-33.3	ERR	ERR	6	6	4	5	25.0	-16.7	-16.7
Peru	21	19	18	20	11.1	5.3	-4.8	47	38	40	50	25.0	31.6	6.4
Surinam	13	27	13	16	23.1	-40.7	23.1	26	61	15	41	173.3	-32.8	57.7
Uruguay	4	2	6	6	0.0	200.0	50.0	22	5	16	8	-50.0	60.0	-63.6
Venezuela	72	98	51	42	-17.6	-57.1	-41.7	129	182	145	115	-20.7	-36.8	-10.9
Other South America	1	0	0	1	-	-	-	1	0	0	1	-	-	0.0
Total	703	668	404	401	-0.7	-40.0	-43.0	1,522	1,469	941	1,053	11.9	-28.3	-30.8
Total Latin America	1,179	1,152	735	777	5.7	-32.6	-34.1	2,424	2,336	1,660	1,864	12.3	-20.2	-23.1

TABLE 2

TOTAL STOPOVER ARRIVALS BY PERMANENT RESIDENCE

	FEBRUARY							JANUARY - FEBRUARY						
	2000	2001	2002	2003	% Change			2000	2001	2002	2003	% Change		
					2003/02	2003/01	2003/00					2003/02	2003/01	2003/00
CARIBBEAN														
Antigua	117	90	85	79	-7.1	-12.2	-32.5	230	173	175	189	8.0	9.2	-17.8
Bahamas	396	382	226	163	-27.9	-57.3	-58.8	840	770	457	359	-21.4	-53.4	-57.3
Barbados	316	304	327	274	-16.2	-9.9	-13.3	573	583	649	627	-3.4	7.5	9.4
Bermuda	115	102	114	135	18.4	32.4	17.4	221	208	213	283	32.9	36.1	28.1
British Virgin Is.	32	28	23	21	-8.7	-25.0	-34.4	47	63	39	62	59.0	-1.6	31.9
Cayman Is.	691	863	646	807	24.9	-6.5	16.8	1,266	1,550	1,198	1,570	31.1	1.3	24.0
Dominica	16	39	10	23	130.0	-41.0	43.8	34	67	25	46	84.0	-31.3	35.3
Grenada	40	25	32	41	28.1	64.0	2.5	85	70	78	82	5.1	17.1	-3.5
Monsterrat	6	6	2	6	200.0	0.0	0.0	15	17	8	13	62.5	-23.5	-13.3
St. Kitts/Nevis/Anguilla	42	43	28	35	25.0	-18.6	-16.7	84	75	66	96	45.5	28.0	14.3
St. Lucia	72	83	55	119	116.4	43.4	65.3	206	165	157	259	65.0	57.0	25.7
St. Vincent	17	44	38	34	-10.5	-22.7	100.0	60	70	91	71	-22.0	1.4	18.3
Turks & Caicos Is.	26	66	48	73	52.1	10.6	180.8	43	108	74	122	64.9	13.0	183.7
Trinidad & Tobago	422	589	380	455	19.7	-22.8	7.8	820	1,009	805	974	21.0	-3.5	18.8
Comm. Caribbean	2,308	2,664	2,014	2,265	12.5	-15.0	-1.9	4,524	4,928	4,035	4,753	17.8	-3.6	5.1
Aruba	28	17	14	31	121.4	82.4	10.7	35	35	32	62	93.8	77.1	77.1
Cuba	146	47	62	43	-30.6	-8.5	-70.5	280	103	95	120	26.3	16.5	-57.1
Curacao	33	35	40	64	60.0	82.9	93.9	59	65	83	146	75.9	124.6	147.5
Dominican Republic	82	48	59	52	-11.9	8.3	-36.6	147	127	104	97	-6.7	-23.6	-34.0
Guadelope	8	7	1	2	100.0	-71.4	-75.0	13	8	16	5	-68.8	-37.5	-61.5
Haiti	33	30	39	77	97.4	156.7	133.3	61	64	81	124	53.1	93.8	103.3
St. Maarten	26	16	23	30	30.4	87.5	15.4	46	43	45	51	13.3	18.6	10.9
All other Caribbean	21	32	28	30	7.1	-6.3	42.9	54	54	54	57	5.6	5.6	5.6
Other Caribbean	377	232	266	329	23.7	41.8	-12.7	695	499	510	662	29.8	32.7	-4.7
TOTAL CARIBBEAN	2,685	2,896	2,280	2,594	13.8	-10.4	-3.4	5,219	5,427	4,545	5,415	19.1	-0.2	3.8
OTHER COUNTRIES														
African Countries	71	61	53	39	-26.4	-36.1	-45.1	178	156	121	107	-11.6	-31.4	-39.9
Isreal	56	81	74	70	-5.4	-13.6	25.0	130	183	132	116	-12.1	-36.6	-10.8
Saudi Arabia	4	1	1	3	200.0	200.0	-25.0	5	10	1	3	-	-70.0	-40.0
Turkey	10	15	18	14	-22.2	-6.7	40.0	41	39	30	30	0.0	-23.1	-26.8
Other Middle East	20	19	13	11	-15.4	-42.1	-45.0	33	53	27	24	-11.1	-54.7	-27.3
India & Pakistan	48	46	34	27	-20.6	-41.3	-43.8	99	98	65	51	-21.5	-48.0	-48.5
Japan	708	643	386	368	-4.7	-42.8	-48.0	1,272	1,138	630	686	8.9	-39.7	-46.1
China	49	32	21	34	61.9	6.3	-30.6	106	65	49	125	155.1	92.3	17.9
Taiwan	5	4	0	11	-	175.0	120.0	11	16	7	17	142.9	6.3	54.5
Korea	9	18	15	23	53.3	27.8	155.6	42	46	25	43	72.0	-6.5	2.4
Philippines	83	40	44	101	129.5	152.5	21.7	164	82	72	252	250.0	207.3	53.7
Singapore	1	14	1	5	400.0	-64.3	400.0	4	30	3	15	400.0	-50.0	275.0
Other Asia	16	35	9	12	33.3	-65.7	-25.0	42	62	19	27	42.1	-56.5	-35.7
Australia	76	117	109	85	-22.0	-27.4	11.8	216	275	232	219	-5.6	-20.4	1.4
New Zealand	9	19	39	10	-74.4	-47.4	11.1	42	39	52	23	-55.8	-41.0	-45.2
All Other Ctries	2	4	3	1	-66.7	-75.0	-50.0	4	8	4	3	-25.0	-62.5	-25.0
Total	1,167	1,149	820	814	-0.7	-29.2	-30.2	2,389	2,300	1,469	1,741	18.5	-24.3	-27.1
GRAND TOTAL	108,723	113,345	100,010	111,458	11.4	-1.7	2.5	204,823	215,221	190,107	212,764	11.9	-1.1	3.9

STOPOVER VISITORS BY MARKET SHARE

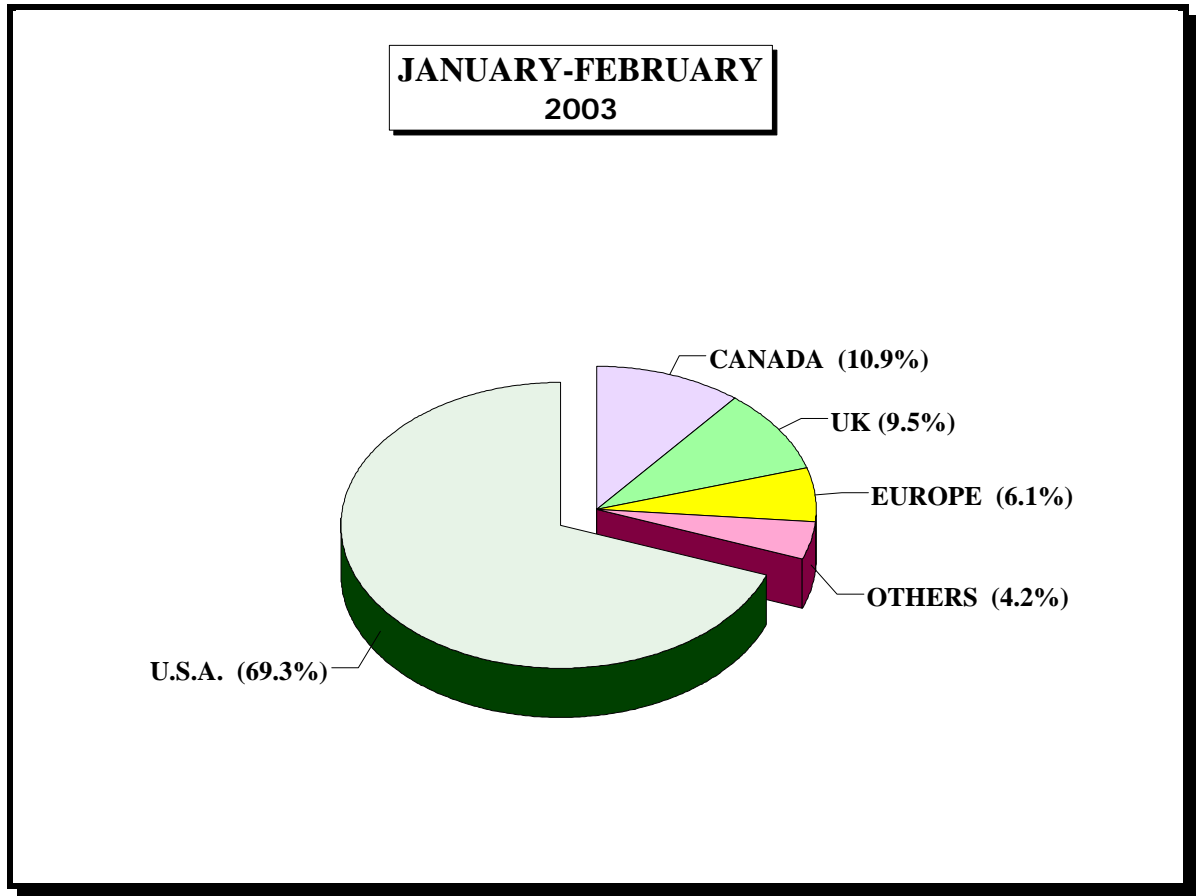


Fig. 2

Country	February 2003	% Share	Jan. - Feb. 2003	% Share	Jan. - Feb. 2002	% Share	%Change 2003/02
U.S.A	78,955	70.8%	147,551	69.3%	134,143	70.6%	10.0%
CANADA	11,506	10.3%	23,095	10.9%	22,189	11.7%	4.1%
U.K.	10,664	9.6%	20,189	9.5%	17,951	9.4%	12.5%
EUROPE	6,148	5.5%	12,909	6.1%	8,150	4.3%	58.4%
OTHERS	4,185	3.8%	9,020	4.2%	7,674	4.0%	17.5%
Total	111,458	100.0%	212,764	100.0%	190,107	100.0%	11.9%

TABLE 3

<u>AVERAGE LENGTH OF STAY (Nights)</u>					
<u>FOREIGN NATIONALS</u>					
	All Types of Accommodation			Hotel	
	2002	2003		2002	2003
January	10.4	10.1		6.7	6.6
February	9.0	8.8		6.5	6.3
Jan. - Feb.	9.6	9.4		6.6	6.5

Note: LENGTH OF STAY IS BASED ON INTENDED LENGTH OF STAY

STOPOVER ARRIVALS BY AGE

**JANUARY - FEBRUARY
2003**

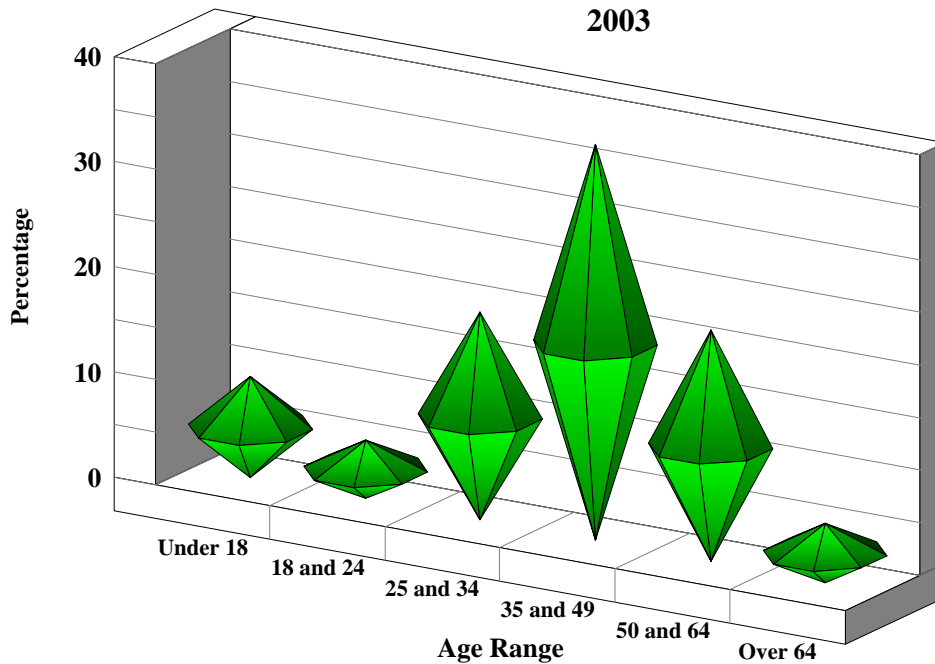


Fig. 3

AGE DISTRIBUTION OF STOPOVER ARRIVALS

Age	FEBRUARY		JAN.-FEB.		JAN.-FEB.		%Change 2003/02
	2003	% Share	2003	% Share	2002	% Share	
Under 18	10,686	9.6	18,682	8.8	16,649	8.8	12.2%
18 and 24	6,163	5.5	13,097	6.2	11,567	6.1	13.2%
25 and 34	21,926	19.7	42,786	20.1	39,599	20.8	8.0%
35 and 49	41,959	37.6	78,114	36.7	70,202	36.9	11.3%
50 and 64	24,481	22.0	47,488	22.3	40,862	21.5	16.2%
Over 64	6,243	5.6	12,597	5.9	11,228	5.9	12.2%
Total	111,458	100.0	212,764	100.0	190,107	100.0	11.9%

TABLE 4**CRUISE PASSENGER ARRIVALS BY MONTH AND PORT OF CALL
JANUARY - FEBRUARY 2003**

	MONTEGO BAY		% Change 2003/02		OCHO RIOS		% Change 2003/02		2003 TOTAL		2002 TOTAL		% Change 2003/02	
	CALLS	PAX	CALLS	PAX	CALLS	PAX	CALLS	PAX	CALLS	PAX	CALLS	PAX	CALLS	PAX
January	25	43,827	56.3%	74.4%	35	75,007	16.7%	13.2%	60	118,834	46	91,399	30.4%	30.0%
February	24	39,006	71.4%	121.0%	35	77,390	20.7%	30.8%	60	116,451	43	76,799	39.5%	51.6%
Jan. - Feb.	49	82,833	63.3%	93.6%	70	152,397	18.6%	21.5%	120	235,285	89	168,198	34.8%	39.9%

- * Note:
1. During the month of January three Cruise Ship calls with 3,174 Cruise passengers visited two ports.
 2. During the month of February 2 Cruise Ship calls with 2,798 Cruise passengers visited two ports.
 3. Included in the total Cruise passengers for the month of February, 1 call with 55 passengers visited Port Antoinio.

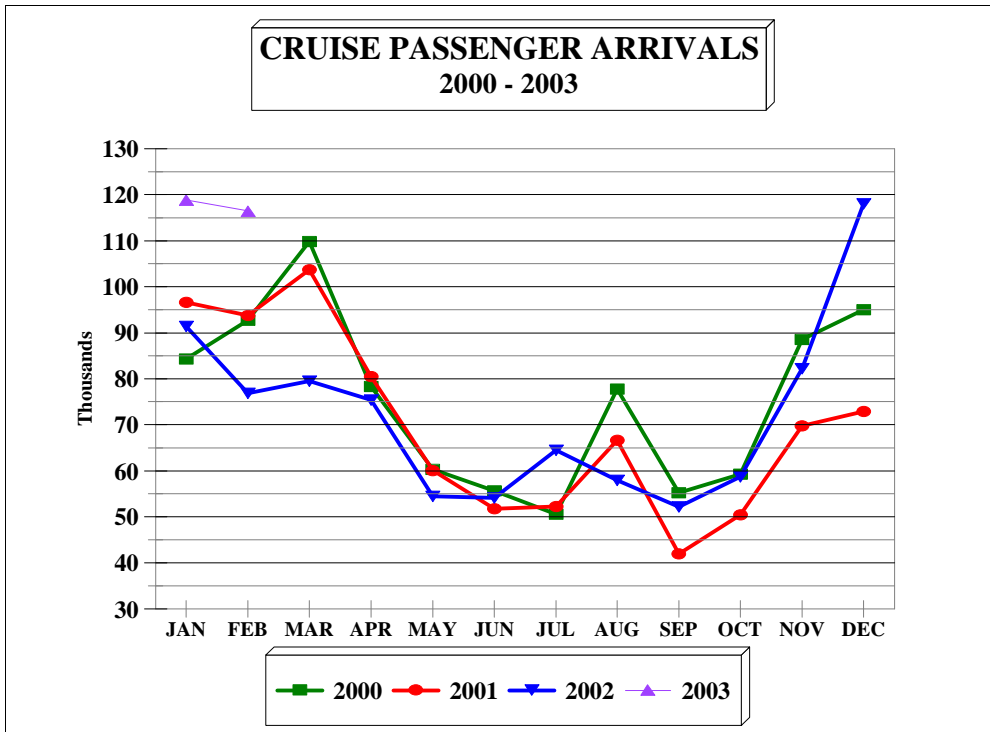


FIG. 4

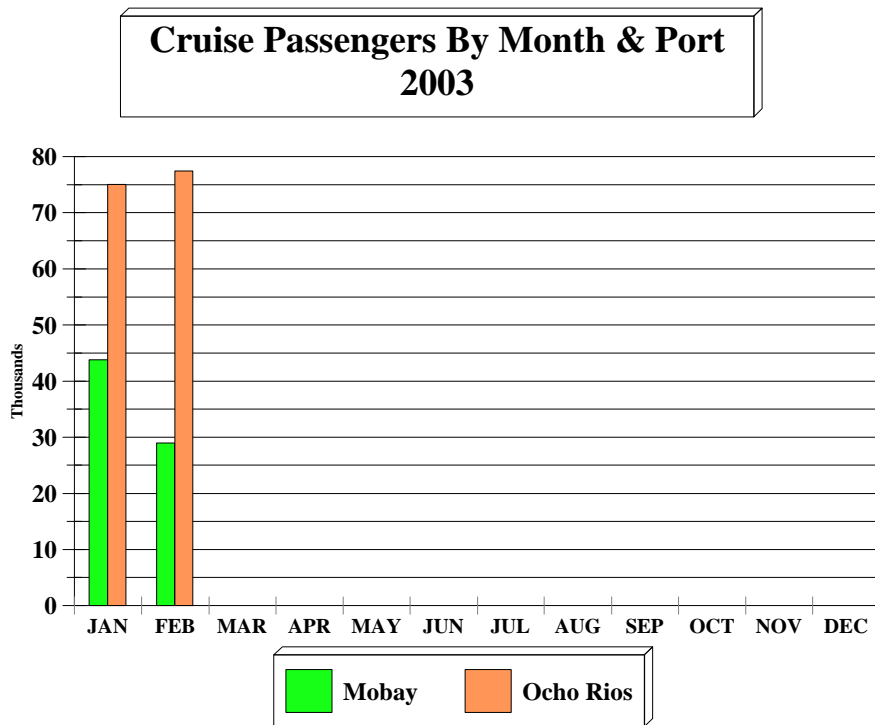


FIG. 4a

TABLE 5A
LANDED TOURISTS BY SCHEDULED & CHARTERED AIRLINES

	<u>FEBRUARY 2003</u>			<u>JANUARY - FEBRUARY 2003</u>		
	<u>SCHEDULED AIRLINES</u>	<u>CHARTERED AIRLINES</u>	<u>TOTAL STOPOVERS</u>	<u>SCHEDULED AIRLINES</u>	<u>CHARTERED AIRLINES</u>	<u>TOTAL STOPOVERS</u>
U.S.A.						
<u>NORTHEAST (NEW YORK)</u>						
Connecticut	2,167	37	2,204	3,639	90	3,729
Delaware	410	2	412	783	6	789
Maine	310	0	310	525	2	527
Maryland	2,684	8	2,692	5,103	15	5,118
Massachusetts	3,186	9	3,195	5,800	15	5,815
New Hampshire	604	1	605	913	6	919
New Jersey	4,791	37	4,828	8,794	46	8,840
New York	12,939	382	13,321	23,342	516	23,858
Pennsylvania	4,788	13	4,801	9,127	46	9,173
Rhode Island	320	0	320	642	0	642
Vermont	264	4	268	363	5	368
Virginia	1,547	19	1,566	2,784	37	2,821
Washington D.C.	353	1	354	698	2	700
West Virginia	125	5	130	199	5	204
Total	<u>34,488</u>	<u>518</u>	<u>35,006</u>	<u>62,712</u>	<u>791</u>	<u>63,503</u>
<u>MIDWEST (CHICAGO)</u>						
Illinois	2,725	2,321	5,046	5,211	4,852	10,063
Indiana	805	452	1,257	1,535	823	2,358
Iowa	967	421	1,388	1,700	788	2,488
Kansas	357	24	381	656	51	707
Kentucky	339	134	473	659	169	828
Michigan	2,257	1,966	4,223	3,606	2,693	6,299
Minnesota	1,846	1,851	3,697	3,597	3,059	6,656
Missouri	598	1,293	1,891	1,028	2,397	3,425
Nebraska	456	32	488	1,003	53	1,056
North Dakota	123	77	200	255	111	366
Ohio	1,409	329	1,738	2,622	508	3,130
South Dakota	215	96	311	413	151	564
Wisconsin	1,243	2,671	3,914	2,466	5,952	8,418
Total	<u>13,340</u>	<u>11,667</u>	<u>25,007</u>	<u>24,751</u>	<u>21,607</u>	<u>46,358</u>

TABLE 5A
LANDED TOURISTS BY SCHEDULED & CHARTERED AIRLINES

	<u>FEBRUARY 2003</u>			<u>JANUARY - FEBRUARY 2003</u>		
	SCHEDULED AIRLINES	CHARTERED AIRLINES	TOTAL STOPOVERS	SCHEDULED AIRLINES	CHARTERED AIRLINES	TOTAL STOPOVERS
<u>SOUTH (MIAMI)</u>						
Alabama	470	3	473	796	35	831
Arkansas	175	14	189	357	33	390
Florida	7,030	7	7,037	13,796	44	13,840
Georgia	2,213	54	2,267	4,852	69	4,921
Louisiana	353	2	355	636	6	642
Mississippi	128	2	130	257	9	266
North Carolina	1,223	42	1,265	2,473	60	2,533
Oklahoma	184	6	190	393	13	406
Puerto Rico	100	1	101	182	1	183
South Carolina	519	38	557	986	49	1,035
Tennessee	769	32	801	1,552	46	1,598
Texas	1,559	16	1,575	2,901	32	2,933
Total	<u>14,723</u>	<u>217</u>	<u>14,940</u>	<u>29,181</u>	<u>397</u>	<u>29,578</u>
<u>WEST (LOS ANGELES)</u>						
Alaska	45	2	47	83	2	85
Arizona	249	5	254	504	11	515
California	2,155	42	2,197	4,335	88	4,423
Colorado	429	12	441	918	31	949
Hawaii	18	2	20	27	2	29
Idaho	108	0	108	275	2	277
Montana	98	2	100	174	3	177
Nevada	156	5	161	292	8	300
New Mexico	47	2	49	105	2	107
Oregon	162	5	167	303	6	309
Utah	111	4	115	280	7	287
Washington	311	6	317	586	8	594
Wyoming	25	1	26	59	1	60
Total	<u>3,914</u>	<u>88</u>	<u>4,002</u>	<u>7,941</u>	<u>171</u>	<u>8,112</u>
TOTAL U.S.A.	<u>66,465</u>	<u>12,490</u>	<u>78,955</u>	<u>124,585</u>	<u>22,966</u>	<u>147,551</u>

TABLE 5A
LANDED TOURISTS BY SCHEDULED & CHARTERED AIRLINES

	FEBRUARY 2003			JANUARY - FEBRUARY 2003		
	SCHEDULED AIRLINES	CHARTERED AIRLINES	TOTAL STOPOVERS	SCHEDULED AIRLINES	CHARTERED AIRLINES	TOTAL STOPOVERS
<u>CANADA (TORONTO)</u>						
Alberta	478	42	520	1,026	103	1,129
British Columbia	295	14	309	634	38	672
Manitoba	379	400	779	646	739	1,385
New Brunswick	145	4	149	233	15	248
Newfoundland	103	8	111	124	10	134
Nova Scotia	278	4	282	379	13	392
Ontario	4,568	2,888	7,456	8,660	6,669	15,329
P.E. Island	22	0	22	26	0	26
Quebec	936	597	1,533	1,903	1,251	3,154
Saskatchewan	231	83	314	400	169	569
Other Canada	21	10	31	44	13	57
Total	7,456	4,050	11,506	14,075	9,020	23,095
<u>LONDON OFFICE</u>						
<u>Northern Europe</u>						
U.K.	7,446	3,218	10,664	13,324	6,865	20,189
Denmark	43	0	43	83	4	87
Finland	90	4	94	161	7	168
Norway	136	7	143	206	8	214
Sweden	89	4	93	184	12	196
<u>Southern Europe</u>						
Greece	66	8	74	83	8	91
Italy	885	1,742	2,627	2,401	3,355	5,756
Portugal	52	2	54	82	2	84
Spain	99	3	102	185	14	199
<u>Western Europe</u>						
Austria	149	47	196	334	139	473
Belgium	63	27	90	129	55	184
France	256	7	263	500	9	509
Germany	1,316	133	1,449	2,856	265	3,121
Luxemburg	5	1	6	13	1	14
Netherlands	122	203	325	235	321	556
Switzerland	149	44	193	336	56	392
<u>Central/East Europe</u>						
Czechoslovakia	60	4	64	83	6	89
Hungary	13	2	15	39	5	44
Poland	64	15	79	174	19	193
Russia	79	0	79	276	5	281
Other Europe	142	17	159	230	28	258
Total	11,324	5,488	16,812	21,914	11,184	33,098

TABLE 5A
LANDED TOURISTS BY SCHEDULED & CHARTERED AIRLINES

	<u>FEBRUARY 2003</u>			<u>JANUARY - FEBRUARY 2003</u>		
	SCHEDULED AIRLINES	CHARTERED AIRLINES	TOTAL STOPOVERS	SCHEDULED AIRLINES	CHARTERED AIRLINES	TOTAL STOPOVERS
<u>OTHER COUNTRIES</u>						
<u>CENTRAL AMERICA</u>						
Mexico	102	1	103	214	1	215
Belize	95	0	95	222	0	222
Costa Rica	47	0	47	97	0	97
El Salvador	8	0	8	18	0	18
Guatemala	14	0	14	32	0	32
Honduras	11	0	11	28	0	28
Nicaragua	3	0	3	6	0	6
Panama	95	0	95	193	0	193
Total	<u>375</u>	<u>1</u>	<u>376</u>	<u>810</u>	<u>1</u>	<u>811</u>
<u>SOUTH AMERICA</u>						
Argentina	47	0	47	116	0	116
Bolivia	8	0	8	14	0	14
Brazil	75	0	75	135	0	135
Chile	60	0	60	87	0	87
Colombia	20	0	20	85	132	217
Ecuador	0	0	0	6	0	6
Guyana	104	0	104	258	0	258
Paraguay	2	0	2	5	0	5
Peru	20	0	20	50	0	50
Surinam	16	0	16	41	0	41
Uruguay	6	0	6	8	0	8
Venezuela	42	0	42	112	3	115
Other South America	1	0	1	1	0	1
Total	<u>401</u>	<u>0</u>	<u>401</u>	<u>918</u>	<u>135</u>	<u>1,053</u>
Total Latin America	<u>776</u>	<u>1</u>	<u>777</u>	<u>1,728</u>	<u>136</u>	<u>1,864</u>

TABLE 5A
LANDED TOURISTS BY SCHEDULED & CHARTERED AIRLINES

	<u>FEBRUARY 2003</u>			<u>JANUARY - FEBRUARY 2003</u>		
	SCHEDULED AIRLINES	CHARTERED AIRLINES	TOTAL STOPOVERS	SCHEDULED AIRLINES	CHARTERED AIRLINES	TOTAL STOPOVERS
<u>CARIBBEAN</u>						
Antigua	79	0	79	188	1	189
Bahamas	163	0	163	353	6	359
Barbados	274	0	274	627	0	627
Bermuda	135	0	135	282	1	283
British Virgin Is.	21	0	21	62	0	62
Cayman Is.	807	0	807	1,570	0	1,570
Dominica	23	0	23	46	0	46
Grenada	41	0	41	82	0	82
Monsterrat	5	1	6	12	1	13
St. Kitts/Nevis/Anguilla	35	0	35	96	0	96
St. Lucia	119	0	119	259	0	259
St. Vincent	34	0	34	71	0	71
Turks & Caicos Is.	73	0	73	122	0	122
Trinidad & Tobago	455	0	455	973	1	974
Comm. Caribbean	2,264	1	2,265	4,743	10	4,753
Aruba	31	0	31	62	0	62
Cuba	43	0	43	120	0	120
Curacao	64	0	64	146	0	146
Dominican Republic	52	0	52	97	0	97
Guadelope	2	0	2	5	0	5
Haiti	77	0	77	124	0	124
St. Maarten	30	0	30	51	0	51
All other Caribbean	30	0	30	57	0	57
Other Caribbean	329	0	329	662	0	662
TOTAL CARIBBEAN	2,593	1	2,594	5,405	10	5,415
<u>OTHER COUNTRIES</u>						
African Countries	36	3	39	103	4	107
Isreal	70	0	70	116	0	116
Saudi Arabia	3	0	3	3	0	3
Turkey	11	3	14	23	7	30
Other Middle East	11	0	11	24	0	24
India & Pakistan	20	7	27	43	8	51
Japan	368	0	368	680	6	686
China	33	1	34	87	38	125
Taiwan	11	0	11	17	0	17
Korea	22	1	23	42	1	43
Philippines	101	0	101	252	0	252
Singapore	5	0	5	15	0	15
Other Asia	11	1	12	26	1	27
Australia	84	1	85	218	1	219
New Zealand	10	0	10	23	0	23
All Other Ctries	1	0	1	3	0	3
Total	797	17	814	1,675	66	1,741
GRAND TOTAL	89,411	22,047	111,458	169,382	43,382	212,764

Stopover Arrivals

By Intended Resort Area of Stay

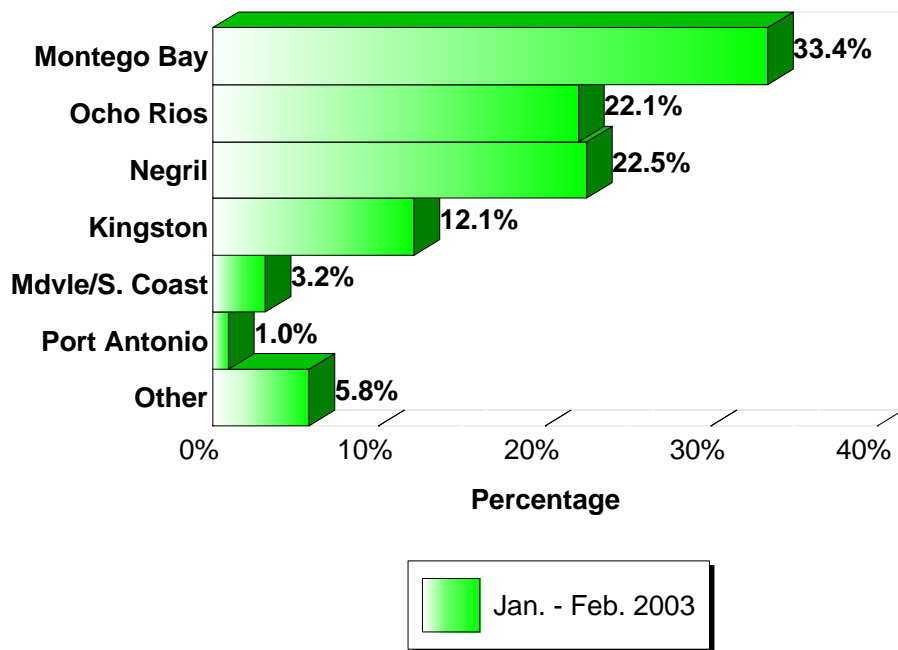


Fig. 5

STOPOVER ARRIVALS BY INTENDED AREA OF STAY

Area	FEBRUARY		JAN.-FEB.		JAN.-FEB.		%Change 2003/02
	2003	%Share	2002	%Share	2002	%Share	
Montego Bay	37,080	33.3%	71,053	33.4%	61,699	32.5%	15.2%
Ocho Rios	25,654	23.0%	46,920	22.1%	41,189	21.7%	13.9%
Negril	25,172	22.6%	47,900	22.5%	44,295	23.3%	8.1%
Kingston	12,773	11.5%	25,770	12.1%	23,648	12.4%	9.0%
Mdvle/S. Coast	3,352	3.0%	6,708	3.2%	6,283	3.3%	6.8%
Port Antonio	1,292	1.2%	2,041	1.0%	1,914	1.0%	6.6%
Other	6,195	5.6%	12,372	5.8%	11,079	5.8%	11.7%
Total	111,518	100.0%	212,764	100.0%	190,107	100.0%	11.9%