

**TABLE 1**  
**TOURIST ARRIVALS**  
January - August  
**2004**

Month	Foreign Nationals	----- Stopovers ----->		Non-Resident Jamaicans	-----<		Total Stopover Arrivals	----->	
		+/- 2004/03	+/- 2004/02		+/- 2004/03	+/- 2004/02		+/- 2004/03	+/- 2004/02
January	104,425	8.9%	22.7%	4,925	-9.3%	-1.2%	109,350	7.9%	21.4%
February	115,183	8.2%	20.9%	4,946	-1.4%	4.4%	120,129	7.8%	20.1%
March	130,636	5.2%	5.6%	5,970	11.8%	-8.4%	136,606	5.5%	4.9%
April	123,841	18.4%	31.4%	7,260	-1.6%	12.8%	131,101	17.1%	30.2%
<b>Jan.-Apr.</b>	<b>474,085</b>	<b>10.0%</b>	<b>19.0%</b>	<b>23,101</b>	<b>-0.3%</b>	<b>1.9%</b>	<b>497,186</b>	<b>9.5%</b>	<b>18.1%</b>
May	105,842	10.5%	14.3%	5,917	-4.7%	-11.5%	111,759	9.5%	12.5%
June	125,153	9.7%	18.0%	8,240	3.1%	7.5%	133,393	9.3%	17.3%
July	148,904	11.5%	17.6%	11,327	8.3%	2.3%	160,231	11.2%	16.4%
August	120,683	1.1%	10.1%	8,843	-0.3%	-2.6%	129,526	1.0%	9.1%
<b>May-Aug.</b>	<b>500,582</b>	<b>8.2%</b>	<b>15.1%</b>	<b>34,327</b>	<b>2.4%</b>	<b>-0.5%</b>	<b>534,909</b>	<b>7.8%</b>	<b>14.0%</b>
<b>Jan.-Aug.</b>	<b>974,667</b>	<b>9.0%</b>	<b>17.0%</b>	<b>57,428</b>	<b>1.3%</b>	<b>0.4%</b>	<b>1,032,095</b>	<b>8.6%</b>	<b>15.9%</b>

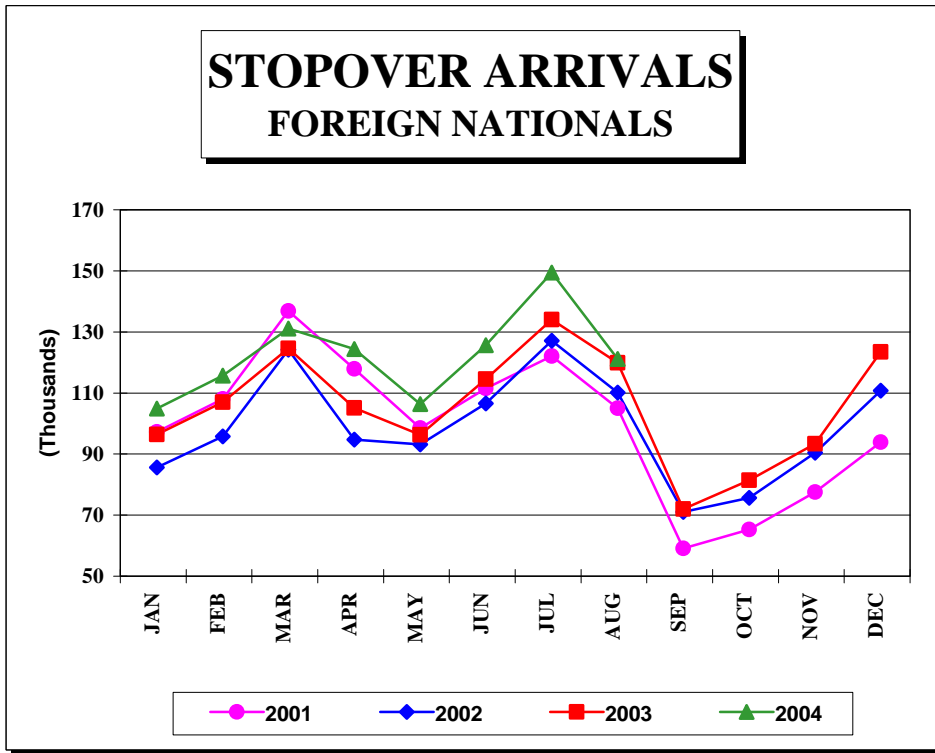


FIG. 1

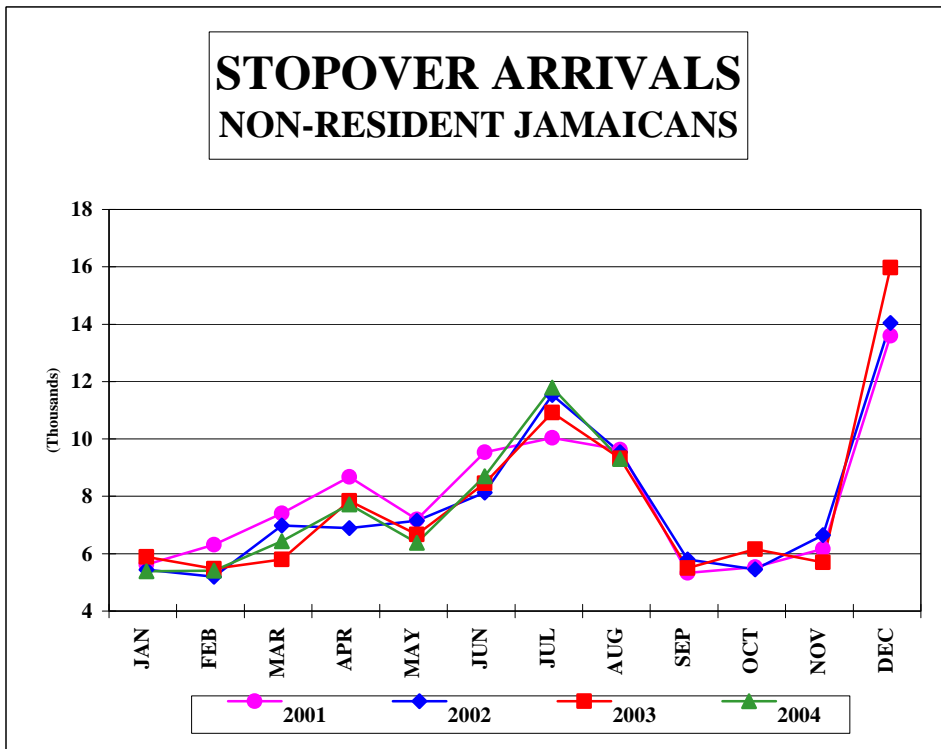


FIG. 1a

**TABLE 1.1****First & Repeat Visit to Jamaica**

FOREIGN NATIONALS

2004

	Arrivals				TOTAL	% SHARE	
	First Visit	+/-	Repeat Visit	+/-		First Visit	Repeat Visit
Jan.	54,608	6.3	49,817	12.0	104,425	52.3	47.7
Feb.	61,517	8.6	53,666	7.8	115,183	53.4	46.6
Mar.	76,455	3.2	54,181	8.2	130,636	58.5	41.5
Apr.	68,644	19.7	55,197	16.8	123,841	55.4	44.6
<b>Jan.-Apr.</b>	<b>261,224</b>	<b>9.1</b>	<b>212,861</b>	<b>11.1</b>	<b>474,085</b>	<b>55.1</b>	<b>44.9</b>
May	61,937	13.8	43,905	6.0	105,842	58.5	41.5
Jun.	71,284	9.4	53,869	10.1	125,153	57.0	43.0
Jul.	78,621	11.4	70,283	11.6	148,904	52.8	47.2
Aug.	66,453	1.1	54,230	1.1	120,683	55.1	44.9
<b>May-Aug.</b>	<b>278,295</b>	<b>8.8</b>	<b>222,287</b>	<b>7.4</b>	<b>500,582</b>	<b>55.6</b>	<b>44.4</b>
<b>Jan.-Aug.</b>	<b>539,519</b>	<b>8.9</b>	<b>435,148</b>	<b>9.2</b>	<b>974,667</b>	<b>55.4</b>	<b>44.6</b>

**TABLE 1.2****STOPOVER ARRIVALS BY MARKET REGION  
AND MONTH OF ARRIVAL 2004**

	U.S.A.				Canada	U.K. Europe	Latin America	Caribbean	Asia	Other Countries	Total
	Northeast	Mid-West	South	West							
<b>January</b>	31,236	23,510	14,108	4,542	12,336	18,959	766	2,980	521	392	109,350
<b>February</b>	37,653	27,054	14,984	4,183	12,529	19,008	841	2,822	699	356	120,129
<b>March</b>	42,908	29,393	20,789	5,495	11,239	21,009	1,209	3,585	686	293	136,606
<b>April</b>	47,843	20,524	22,329	6,670	9,619	17,658	773	4,749	611	325	131,101
<b>Jan.-Apr.</b>	<b>159,640</b>	<b>100,481</b>	<b>72,210</b>	<b>20,890</b>	<b>45,723</b>	<b>76,634</b>	<b>3,589</b>	<b>14,136</b>	<b>2,517</b>	<b>1,366</b>	<b>497,186</b>
<b>May</b>	33,313	14,271	26,608	6,419	6,859	19,103	981	3,233	570	402	111,759
<b>June</b>	39,235	16,851	36,446	8,636	5,957	20,102	782	4,510	502	372	133,393
<b>July</b>	54,122	15,699	38,723	9,184	8,395	24,744	1,473	6,721	603	567	160,231
<b>August</b>	48,471	12,042	20,423	8,532	7,424	26,128	873	4,837	455	341	129,526
<b>May - Aug.</b>	<b>175,141</b>	<b>58,863</b>	<b>122,200</b>	<b>32,771</b>	<b>28,635</b>	<b>90,077</b>	<b>4,109</b>	<b>19,301</b>	<b>2,130</b>	<b>1,682</b>	<b>534,909</b>
<b>Jan. - Aug.</b>	<b>334,781</b>	<b>159,344</b>	<b>194,410</b>	<b>53,661</b>	<b>74,358</b>	<b>166,711</b>	<b>7,698</b>	<b>33,437</b>	<b>4,647</b>	<b>3,048</b>	<b>1,032,095</b>
<b>+/- %</b>	<b>10.6%</b>	<b>4.6%</b>	<b>1.9%</b>	<b>8.6%</b>	<b>13.8%</b>	<b>15.8%</b>	<b>2.9%</b>	<b>9.9%</b>	<b>1.2%</b>	<b>-16.8%</b>	<b>8.6%</b>

TABLE 2

## TOTAL STOPOVER ARRIVALS BY PERMANENT RESIDENCE

	<u>AUGUST</u>			<u>% C h a n g e</u>			<u>JANUARY - AUGUST</u>			<u>% C h a n g e</u>				
	<u>2001</u>	<u>2002</u>	<u>2003</u>	<u>2004</u>	<u>2004/03</u>	<u>2004/02</u>	<u>2004/01</u>	<u>2001</u>	<u>2002</u>	<u>2003</u>	<u>2004</u>	<u>2004/03</u>	<u>2004/02</u>	<u>2004/01</u>
<b>U.S.A.</b>														
<b><u>NORTHEAST (NEW YORK)</u></b>														
Connecticut	1,930	1,993	2,476	2,570	3.8	29.0	33.2	17,399	15,754	17,130	19,895	16.1	26.3	14.3
Delaware	355	439	458	444	-3.1	1.1	25.1	4,022	3,381	3,456	4,024	16.4	19.0	0.0
Maine	109	101	149	125	-16.1	23.8	14.7	2,071	1,692	1,784	2,483	39.2	46.7	19.9
Maryland	3,796	4,162	4,806	4,512	-6.1	8.4	18.9	25,687	25,118	27,510	29,781	8.3	18.6	15.9
Massachusetts	2,407	2,248	2,331	2,505	7.5	11.4	4.1	24,870	20,521	21,311	25,134	17.9	22.5	1.1
New Hampshire	176	185	264	222	-15.9	20.0	26.1	3,798	2,889	3,102	3,735	20.4	29.3	-1.7
New Jersey	5,143	6,029	6,828	8,132	19.1	34.9	58.1	42,040	39,103	43,941	49,713	13.1	27.1	18.3
New York	16,847	19,412	21,097	21,395	1.4	10.2	27.0	119,346	112,606	120,034	129,669	8.0	15.2	8.6
Pennsylvania	4,211	4,747	5,484	5,115	-6.7	7.8	21.5	38,577	36,529	39,966	43,411	8.6	18.8	12.5
Rhode Island	162	232	263	304	15.6	31.0	87.7	2,370	2,203	2,484	3,136	26.2	42.4	32.3
Vermont	41	42	66	84	27.3	100.0	104.9	1,395	937	1,088	1,495	37.4	59.6	7.2
Virginia	1,609	1,827	2,375	2,237	-5.8	22.4	39.0	14,919	14,239	15,623	16,650	6.6	16.9	11.6
Washington D.C.	644	638	699	621	-11.2	-2.7	-3.6	3,937	3,580	4,031	3,919	-2.8	9.5	-0.5
West Virginia	148	115	125	205	64.0	78.3	38.5	1,545	1,203	1,167	1,736	48.8	44.3	12.4
<b>Total</b>	<b>37,578</b>	<b>42,170</b>	<b>47,421</b>	<b>48,471</b>	<b>2.2</b>	<b>14.9</b>	<b>29.0</b>	<b>301,976</b>	<b>279,755</b>	<b>302,627</b>	<b>334,781</b>	<b>10.6</b>	<b>19.7</b>	<b>10.9</b>
<b><u>MIDWEST (CHICAGO)</u></b>														
Illinois	4,218	3,985	4,124	3,593	-12.9	-9.8	-14.8	38,977	36,005	37,577	37,919	0.9	5.3	-2.7
Indiana	729	836	840	822	-2.1	-1.7	12.8	9,307	8,893	10,030	9,998	-0.3	12.4	7.4
Iowa	315	318	377	361	-4.2	13.5	14.6	5,205	5,180	5,711	6,181	8.2	19.3	18.8
Kansas	324	381	328	343	4.6	-10.0	5.9	3,836	3,169	3,136	3,949	25.9	24.6	2.9
Kentucky	360	387	451	376	-16.6	-2.8	4.4	3,942	4,443	4,450	4,521	1.6	1.8	14.7
Michigan	1,405	1,394	1,537	1,398	-9.0	0.3	-0.5	22,616	18,015	21,250	21,731	2.3	20.6	-3.9
Minnesota	493	689	705	665	-5.7	-3.5	34.9	14,849	13,591	15,403	15,742	2.2	15.8	6.0
Missouri	1,417	1,858	2,018	1,581	-21.7	-14.9	11.6	13,566	13,820	15,739	16,312	3.6	18.0	20.2
Nebraska	245	264	357	358	0.3	35.6	46.1	3,253	2,742	3,176	3,517	10.7	28.3	8.1
North Dakota	47	32	45	68	51.1	112.5	44.7	810	811	842	1,375	63.3	69.5	69.8
Ohio	1,503	1,493	1,573	1,603	1.9	7.4	6.7	14,978	14,760	14,428	15,047	4.3	1.9	0.5
South Dakota	54	60	67	75	11.9	25.0	38.9	928	874	1,260	1,423	12.9	62.8	53.3
Wisconsin	866	796	974	799	-18.0	0.4	-7.7	20,815	18,159	19,370	21,629	11.7	19.1	3.9
<b>Total</b>	<b>11,976</b>	<b>12,493</b>	<b>13,396</b>	<b>12,042</b>	<b>-10.1</b>	<b>-3.6</b>	<b>0.6</b>	<b>153,082</b>	<b>140,462</b>	<b>152,372</b>	<b>159,344</b>	<b>4.6</b>	<b>13.4</b>	<b>4.1</b>

TABLE 2

## TOTAL STOPOVER ARRIVALS BY PERMANENT RESIDENCE

	<u>AUGUST</u>			<u>% Change</u>			<u>JANUARY - AUGUST</u>			<u>% Change</u>				
	<u>2001</u>	<u>2002</u>	<u>2003</u>	<u>2004</u>	2004/03	2004/02	2004/01	<u>2001</u>	<u>2002</u>	<u>2003</u>	<u>2004</u>	2004/03	2004/02	2004/01
<b><u>SOUTH (MIAMI)</u></b>														
Alabama	596	621	662	518	-21.8	-16.6	-13.1	5,295	5,097	5,555	5,349	-3.7	4.9	1.0
Arkansas	281	307	260	275	5.8	-10.4	-2.1	2,193	2,070	2,216	2,409	8.7	16.4	9.8
Florida	11,620	12,041	11,567	9,365	-19.0	-22.2	-19.4	85,271	84,090	83,877	85,545	2.0	1.7	0.3
Georgia	3,701	4,115	3,546	2,966	-16.4	-27.9	-19.9	30,603	33,085	30,828	31,487	2.1	-4.8	2.9
Louisiana	1,090	849	648	546	-15.7	-35.7	-49.9	5,976	5,652	5,253	4,674	-11.0	-17.3	-21.8
Mississippi	335	274	247	229	-7.3	-16.4	-31.6	2,427	2,422	2,191	2,453	12.0	1.3	1.1
North Carolina	1,087	1,144	1,289	1,140	-11.6	-0.3	4.9	12,959	12,114	13,005	14,033	7.9	15.8	8.3
Oklahoma	380	453	441	544	23.4	20.1	43.2	3,185	3,277	3,332	3,756	12.7	14.6	17.9
South Carolina	528	669	676	604	-10.7	-9.7	14.4	5,862	5,586	5,837	6,139	5.2	9.9	4.7
Tennessee	918	1,033	936	867	-7.4	-16.1	-5.6	8,263	9,181	9,175	9,226	0.6	0.5	11.7
Texas	5,004	4,835	4,490	3,369	-25.0	-30.3	-32.7	29,255	31,165	29,470	29,339	-0.4	-5.9	0.3
Total	25,540	26,341	24,762	20,423	-17.5	-22.5	-20.0	191,289	193,739	190,739	194,410	1.9	0.3	1.6
<b><u>WEST (LOS ANGELES)</u></b>														
Alaska	43	15	38	26	-31.6	73.3	-39.5	257	167	262	256	-2.3	53.3	-0.4
Arizona	556	330	303	293	-3.3	-11.2	-47.3	5,637	3,269	3,223	3,574	10.9	9.3	-36.6
California	5,505	6,179	6,866	6,645	-3.2	7.5	20.7	31,669	31,021	31,322	34,283	9.5	10.5	8.3
Colorado	460	527	474	433	-8.6	-17.8	-5.9	5,238	5,194	4,732	5,622	18.8	8.2	7.3
Hawaii	12	36	29	22	-24.1	-38.9	83.3	189	152	169	202	19.5	32.9	6.9
Idaho	53	56	77	50	-35.1	-10.7	-5.7	873	706	784	620	-20.9	-12.2	-29.0
Montana	35	24	29	36	24.1	50.0	2.9	484	465	578	622	7.6	33.8	28.5
Nevada	203	190	223	234	4.9	23.2	15.3	1,481	1,343	1,749	1,802	3.0	34.2	21.7
New Mexico	77	66	90	83	-7.8	25.8	7.8	875	695	667	794	19.0	14.2	-9.3
Oregon	168	245	162	218	34.6	-11.0	29.8	1,701	1,637	1,522	1,648	8.3	0.7	-3.1
Utah	89	107	141	100	-29.1	-6.5	12.4	765	992	1,118	1,031	-7.8	3.9	34.8
Washington	346	350	397	362	-8.8	3.4	4.6	3,135	2,802	2,963	2,858	-3.5	2.0	-8.8
Wyoming	30	41	31	30	-3.2	-26.8	0.0	278	280	304	349	14.8	24.6	25.5
Total	7,577	8,166	8,860	8,532	-3.7	4.5	12.6	52,582	48,723	49,393	53,661	8.6	10.1	2.1
<b>TOTAL U.S.A.</b>	<b>82,671</b>	<b>89,170</b>	<b>94,439</b>	<b>89,468</b>	<b>-5.3</b>	<b>0.3</b>	<b>8.2</b>	<b>698,929</b>	<b>662,679</b>	<b>695,131</b>	<b>742,196</b>	<b>6.8</b>	<b>12.0</b>	<b>6.2</b>

TABLE 2

## TOTAL STOPOVER ARRIVALS BY PERMANENT RESIDENCE

	<u>AUGUST</u>							<u>JANUARY - AUGUST</u>						
	<u>2001</u>	<u>2002</u>	<u>2003</u>	<u>2004</u>	<u>% Change</u>			<u>2001</u>	<u>2002</u>	<u>2003</u>	<u>2004</u>	<u>% Change</u>		
					2004/03	2004/02	2004/01					2004/03	2004/02	2004/01
<b><u>CANADA (TORONTO)</u></b>														
Alberta	233	245	236	245	3.8	0.0	5.2	3,257	2,568	2,709	4,330	59.8	68.6	32.9
British Columbia	231	157	170	204	20.0	29.9	-11.7	2,338	1,785	1,912	2,243	17.3	25.7	-4.1
Manitoba	59	57	35	54	54.3	-5.3	-8.5	2,164	1,213	2,123	1,888	-11.1	55.6	-12.8
New Brunswick	33	16	20	22	10.0	37.5	-33.3	1,059	702	665	824	23.9	17.4	-22.2
Newfoundland	22	45	30	31	3.3	-31.1	40.9	429	433	394	423	7.4	-2.3	-1.4
Nova Scotia	49	42	46	50	8.7	19.0	2.0	1,795	907	1,210	1,483	22.6	63.5	-17.4
Ontario	6,555	5,867	5,133	6,281	22.4	7.1	-4.2	60,218	52,519	47,988	53,960	12.4	2.7	-10.4
P.E. Island	4	2	5	1	-	-	-	108	100	132	144	9.1	44.0	33.3
Quebec	655	429	454	504	11.0	17.5	-23.1	10,082	7,795	7,186	8,025	11.7	3.0	-20.4
Saskatchewan	62	17	26	25	-3.8	47.1	-59.7	983	519	876	878	0.2	69.2	-10.7
Other Canada	43	14	15	7	-53.3	-50.0	-83.7	333	216	154	160	3.9	-25.9	-52.0
Total	7,946	6,891	6,170	7,424	20.3	7.7	-6.6	82,766	68,757	65,349	74,358	13.8	8.1	-10.2
<b><u>LONDON OFFICE</u></b>														
<b><u>Northern Europe</u></b>														
U.K.	10,798	10,742	13,769	16,020	16.3	49.1	48.4	84,067	79,849	97,223	111,068	14.2	39.1	32.1
Denmark	55	27	21	18	-14.3	-33.3	-67.3	549	366	265	460	73.6	25.7	-16.2
Finland	14	13	13	9	-30.8	-30.8	-35.7	271	278	314	274	-12.7	-1.4	1.1
Norway	33	29	32	30	-6.3	3.4	-9.1	557	603	583	492	-15.6	-18.4	-11.7
Sweden	41	31	35	45	28.6	45.2	9.8	894	726	623	735	18.0	1.2	-17.8
<b><u>Southern Europe</u></b>														
Greece	13	54	42	15	-64.3	-72.2	15.4	128	214	201	145	-27.9	-32.2	13.3
Italy	2,431	2,530	3,877	5,009	29.2	98.0	106.0	10,021	9,105	17,746	18,875	6.4	107.3	88.4
Portugal	110	86	63	100	58.7	16.3	-9.1	278	690	338	650	92.3	-5.8	133.8
Spain	571	1,025	1,085	2,035	87.6	98.5	256.4	2,688	4,277	4,803	7,238	50.7	69.2	169.3
<b><u>Western Europe</u></b>														
Austria	137	105	109	237	117.4	125.7	73.0	1,551	1,146	1,356	1,990	46.8	73.6	28.3
Belgium	84	81	214	342	59.8	322.2	307.1	737	834	1,539	2,775	80.3	232.7	276.5
France	208	211	272	298	9.6	41.2	43.3	1,862	1,902	1,856	2,113	13.8	11.1	13.5
Germany	1,389	925	1,071	1,102	2.9	19.1	-20.7	13,606	9,041	10,391	11,931	14.8	32.0	-12.3
Luxemburg	12	12	30	40	33.3	233.3	233.3	63	73	89	119	33.7	63.0	88.9
Netherlands	219	207	375	436	16.3	110.6	99.1	1,951	1,548	2,697	2,701	0.1	74.5	38.4
Switzerland	99	123	126	201	59.5	63.4	103.0	1,648	1,256	1,457	2,590	77.8	106.2	57.2
<b><u>Central/East Europe</u></b>														
Czechoslovakia	9	19	15	12	-20.0	-36.8	33.3	212	214	218	283	29.8	32.2	33.5
Hungary	9	9	13	15	15.4	66.7	66.7	109	174	115	137	19.1	-21.3	25.7
Poland	14	45	34	37	8.8	-17.8	164.3	251	439	620	523	-15.6	19.1	108.4
Russia	43	87	58	56	-3.4	-35.6	30.2	635	777	800	684	-14.5	-12.0	7.7
Other Europe	81	63	79	71	-10.1	12.7	-12.3	617	783	715	928	29.8	18.5	50.4
Total	16,370	16,424	21,333	26,128	22.5	59.1	59.6	122,695	114,295	143,949	166,711	15.8	45.9	35.9

TABLE 2

## TOTAL STOPOVER ARRIVALS BY PERMANENT RESIDENCE

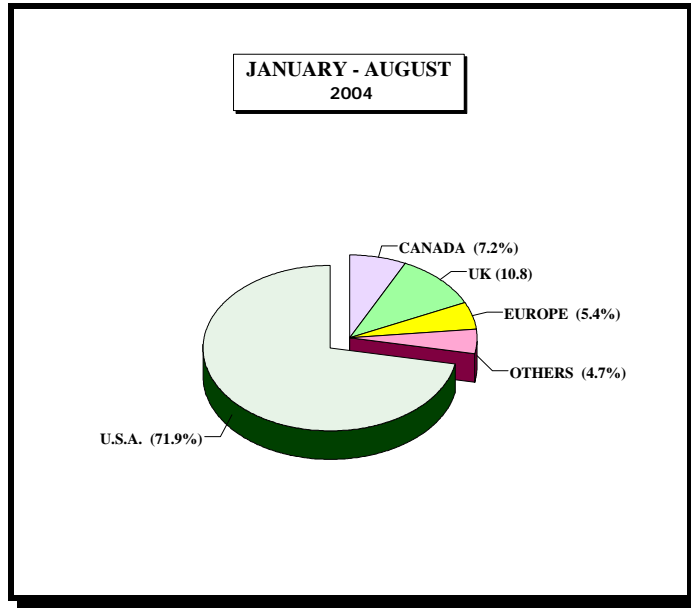
	<u>AUGUST</u>							<u>JANUARY - AUGUST</u>						
	<u>2001</u>	<u>2002</u>	<u>2003</u>	<u>2004</u>	<u>% Change</u>			<u>2001</u>	<u>2002</u>	<u>2003</u>	<u>2004</u>	<u>% Change</u>		
					2004/03	2004/02	2004/01					2004/03	2004/02	2004/01
<b><u>LATIN AMERICA</u></b>														
<b><u>CENTRAL AMERICA</u></b>														
Mexico	280	180	119	127	6.7	-29.4	-54.6	1,860	1,319	1,244	1,820	46.3	38.0	-2.2
Belize	55	40	70	34	-51.4	-15.0	-38.2	339	379	760	355	-53.3	-6.3	4.7
Costa Rica	30	39	66	43	-34.8	10.3	43.3	408	456	370	404	9.2	-11.4	-1.0
El Salvador	27	7	17	10	-41.2	42.9	-63.0	156	147	89	130	46.1	-11.6	-16.7
Guatemala	35	37	32	13	-59.4	-64.9	-62.9	229	283	214	273	27.6	-3.5	19.2
Honduras	8	11	18	11	-38.9	0.0	37.5	113	112	114	176	54.4	57.1	55.8
Nicaragua	3	4	1	2	100.0	-50.0	-33.3	28	57	24	45	87.5	-21.1	60.7
Panama	111	107	83	94	13.3	-12.1	-15.3	931	699	677	680	0.4	-2.7	-27.0
Total	549	425	406	334	-17.7	-21.4	-39.2	4,064	3,452	3,492	3,883	11.2	12.5	-4.5
<b><u>SOUTH AMERICA</u></b>														
Argentina	102	36	28	45	60.7	25.0	-55.9	1,004	322	458	361	-21.2	12.1	-64.0
Bolivia	8	5	6	1	-83.3	-80.0	-87.5	49	39	44	27	-38.6	-30.8	-44.9
Brazil	70	37	39	89	128.2	140.5	27.1	652	632	507	629	24.1	-0.5	-3.5
Chile	42	39	15	19	26.7	-51.3	-54.8	493	489	266	308	15.8	-37.0	-37.5
Colombia	99	23	29	16	-44.8	-30.4	-83.8	1,231	694	496	200	-59.7	-71.2	-83.8
Ecuador	61	8	3	12	300.0	50.0	-80.3	236	118	54	71	31.5	-39.8	-69.9
Guyana	155	225	163	253	55.2	12.4	63.2	1,088	1,237	1,171	1,255	7.2	1.5	15.3
Paraguay	3	1	0	3	-	200.0	0.0	20	18	40	16	-60.0	-11.1	-20.0
Peru	38	15	13	23	76.9	53.3	-39.5	276	250	229	197	-14.0	-21.2	-28.6
Surinam	21	14	23	24	4.3	71.4	14.3	193	127	201	214	6.5	68.5	10.9
Uruguay	13	5	3	6	100.0	20.0	-53.8	111	58	34	78	129.4	34.5	-29.7
Venezuela	81	95	64	48	-25.0	-49.5	-40.7	889	884	481	458	-4.8	-48.2	-48.5
Other South America	0	0	0	0	-	-	-	4	11	6	1	-83.3	-90.9	-75.0
Total	693	503	386	539	39.6	7.2	-22.2	6,246	4,879	3,987	3,815	-4.3	-21.8	-38.9
Total Latin America	1,242	928	792	873	10.2	-5.9	-29.7	10,310	8,331	7,479	7,698	2.9	-7.6	-25.3

TABLE 2

## TOTAL STOPOVER ARRIVALS BY PERMANENT RESIDENCE

	AUGUST							JANUARY - AUGUST						
	2001	2002	2003	2004	% Change			2001	2002	2003	2004	% Change		
					2004/03	2004/02	2004/01					2004/03	2004/02	2004/01
<b>CARIBBEAN</b>														
Antigua	137	211	213	275	29.1	30.3	100.7	1,001	1,174	1,290	1,391	7.8	18.5	39.0
Bahamas	813	443	278	463	66.5	4.5	-43.1	4,718	2,723	1,989	2,240	12.6	-17.7	-52.5
Barbados	508	585	573	570	-0.5	-2.6	12.2	2,998	3,290	3,695	4,065	10.0	23.6	35.6
Bermuda	197	209	247	241	-2.4	15.3	22.3	1,188	1,265	1,625	1,500	-7.7	18.6	26.3
British Virgin Is.	82	49	70	132	88.6	169.4	61.0	351	318	406	631	55.4	98.4	79.8
Cayman Is.	1,058	1,144	1,106	1,218	10.1	6.5	15.1	7,899	7,408	7,871	9,221	17.2	24.5	16.7
Dominica	44	37	55	30	-45.5	-18.9	-31.8	292	252	266	234	-12.0	-7.1	-19.9
Grenada	49	48	85	90	5.9	87.5	83.7	381	409	469	436	-7.0	6.6	14.4
Monsterrat	11	9	23	5	-78.3	-44.4	-54.5	81	59	87	84	-3.4	42.4	3.7
St. Kitts/Nevis/Anguilla	58	87	100	71	-29.0	-18.4	22.4	457	498	543	671	23.6	34.7	46.8
St. Lucia	200	212	248	282	13.7	33.0	41.0	986	1,094	1,290	1,438	11.5	31.4	45.8
St. Vincent	81	101	100	78	-22.0	-22.8	-3.7	390	461	471	483	2.5	4.8	23.8
Turks & Caicos Is.	105	132	136	193	41.9	46.2	83.8	663	661	705	803	13.9	21.5	21.1
Trinidad & Tobago	559	594	733	625	-14.7	5.2	11.8	4,417	4,688	4,989	5,257	5.4	12.1	19.0
<b>Comm. Caribbean</b>	<b>3,902</b>	<b>3,861</b>	<b>3,967</b>	<b>4,273</b>	<b>7.7</b>	<b>10.7</b>	<b>9.5</b>	<b>25,822</b>	<b>24,300</b>	<b>25,696</b>	<b>28,454</b>	<b>10.7</b>	<b>17.1</b>	<b>10.2</b>
Aruba	25	45	59	27	-54.2	-40.0	8.0	198	276	359	352	-1.9	27.5	77.8
Bonaire	0	0	7	22	214.3	-	-	0	0	28	71	153.6	-	-
Cuba	93	59	54	36	-33.3	-39.0	-61.3	482	410	457	272	-40.5	-33.7	-43.6
Curacao	42	66	93	71	-23.7	7.6	69.0	486	676	995	810	-18.6	19.8	66.7
Dominican Republic	120	78	81	132	63.0	69.2	10.0	660	647	572	813	42.1	25.7	23.2
Guadelope	1	4	2	7	250.0	75.0	600.0	45	58	61	117	91.8	101.7	160.0
Haiti	58	65	47	16	-66.0	-75.4	-72.4	374	557	529	301	-43.1	-46.0	-19.5
Puerto Rico	122	111	149	87	-41.6	-21.6	-28.7	1,031	1,129	882	1,155	31.0	2.3	12.0
St. Maarten	46	49	85	105	23.5	114.3	128.3	354	355	481	576	19.8	62.3	62.7
All other Caribbean	47	43	42	61	45.2	41.9	29.8	368	363	352	516	46.6	42.1	40.2
<b>Other Caribbean</b>	<b>554</b>	<b>520</b>	<b>619</b>	<b>564</b>	<b>-8.9</b>	<b>8.5</b>	<b>1.8</b>	<b>3,998</b>	<b>4,471</b>	<b>4,716</b>	<b>4,983</b>	<b>5.7</b>	<b>11.5</b>	<b>24.6</b>
<b>TOTAL CARIBBEAN</b>	<b>4,456</b>	<b>4,381</b>	<b>4,586</b>	<b>4,837</b>	<b>5.5</b>	<b>10.4</b>	<b>8.6</b>	<b>29,820</b>	<b>28,771</b>	<b>30,412</b>	<b>33,437</b>	<b>9.9</b>	<b>16.2</b>	<b>12.1</b>
<b>OTHER COUNTRIES</b>														
African Countries	108	106	119	80	-32.8	-24.5	-25.9	927	832	742	849	14.4	2.0	-8.4
Isreal	125	70	75	50	-33.3	-28.6	-60.0	736	460	540	546	1.1	18.7	-25.8
Saudi Arabia	5	10	8	1	-87.5	-90.0	-80.0	30	43	32	23	-28.1	-46.5	-23.3
Turkey	16	1	11	11	0.0	1000.0	-31.3	165	78	92	124	34.8	59.0	-24.8
Other Middle East	23	54	34	46	35.3	-14.8	100.0	212	264	232	236	1.7	-10.6	11.3
India & Pakistan	54	28	62	28	-54.8	0.0	-48.1	548	362	404	401	-0.7	10.8	-26.8
Japan	428	256	290	267	-7.9	4.3	-37.6	4,283	2,932	2,523	3,056	21.1	4.2	-28.6
China	42	48	41	50	22.0	4.2	19.0	344	333	371	356	-4.0	6.9	3.5
Taiwan	3	5	9	6	-33.3	20.0	100.0	52	50	56	36	-35.7	-28.0	-30.8
Korea	17	14	17	20	17.6	42.9	17.6	185	165	121	156	28.9	-5.5	-15.7
Philippines	31	156	61	54	-11.5	-65.4	74.2	328	523	846	382	-54.8	-27.0	16.5
Singapore	7	3	5	4	-20.0	33.3	-42.9	102	68	77	72	-6.5	5.9	-29.4
Other Asia	26	26	24	26	8.3	0.0	0.0	250	174	193	229	18.7	31.6	-8.4
Australia	79	120	115	120	4.3	0.0	51.9	929	1,010	1,608	1,010	-37.2	0.0	8.7
New Zealand	20	5	24	33	37.5	560.0	65.0	197	217	378	199	-47.4	-8.3	1.0
All Other Ctries	0	2	4	0	-	-	-	44	57	38	20	-47.4	-64.9	-54.5
<b>Total</b>	<b>984</b>	<b>904</b>	<b>899</b>	<b>796</b>	<b>-11.5</b>	<b>-11.9</b>	<b>-19.1</b>	<b>9,332</b>	<b>7,568</b>	<b>8,253</b>	<b>7,695</b>	<b>-6.8</b>	<b>1.7</b>	<b>-17.5</b>
<b>GRAND TOTAL</b>	<b>113,669</b>	<b>118,698</b>	<b>128,219</b>	<b>129,526</b>	<b>1.0</b>	<b>9.1</b>	<b>14.0</b>	<b>953,852</b>	<b>890,401</b>	<b>950,573</b>	<b>1,032,095</b>	<b>8.6</b>	<b>15.9</b>	<b>8.2</b>

# STOPOVER VISITORS BY MARKET SHARE



**Fig. 2**

Country	August 2004	% Share	Jan. - Aug. 2004	% Share	Jan. - Aug. 2003	% Share	%Change 2004/03
U.S.A	89,468	69.1%	742,196	71.9%	696,013	73.2%	6.6%
CANADA	7,424	5.7%	74,358	7.2%	65,349	6.9%	13.8%
U.K.	16,020	12.4%	111,068	10.8%	97,223	10.2%	14.2%
EUROPE	10,108	7.8%	55,643	5.4%	46,726	4.9%	19.1%
OTHERS	6,506	5.0%	48,830	4.7%	45,262	4.8%	7.9%
<b>Total</b>	<b>129,526</b>	<b>100.0%</b>	<b>1,032,095</b>	<b>100.0%</b>	<b>950,573</b>	<b>100.0%</b>	<b>8.6%</b>

**TABLE 3**

<b><u>AVERAGE LENGTH OF STAY (Nights)</u></b>				
<b><u>FOREIGN NATIONALS</u></b>				
	<b>All Types of Accommodation</b>		<b>Hotel</b>	
	2003	2004	2003	2004
<b>January</b>	10.1	9.8	6.6	6.7
<b>February</b>	8.8	8.9	6.3	6.5
<b>March</b>	8.5	8.6	6.1	6.2
<b>April</b>	8.9	8.7	6.2	6.1
<b>May</b>	9.2	8.7	5.9	6.3
<b>June</b>	10.5	10.2	6.2	6.3
<b>July</b>	11.5	10.7	6.7	6.7
<b>August</b>	10.4	10.1	6.7	6.9
<b>Jan. - Aug.</b>	9.8	9.5	6.3	6.4

**Note: LENGTH OF STAY IS BASED ON INTENDED LENGTH OF STAY**

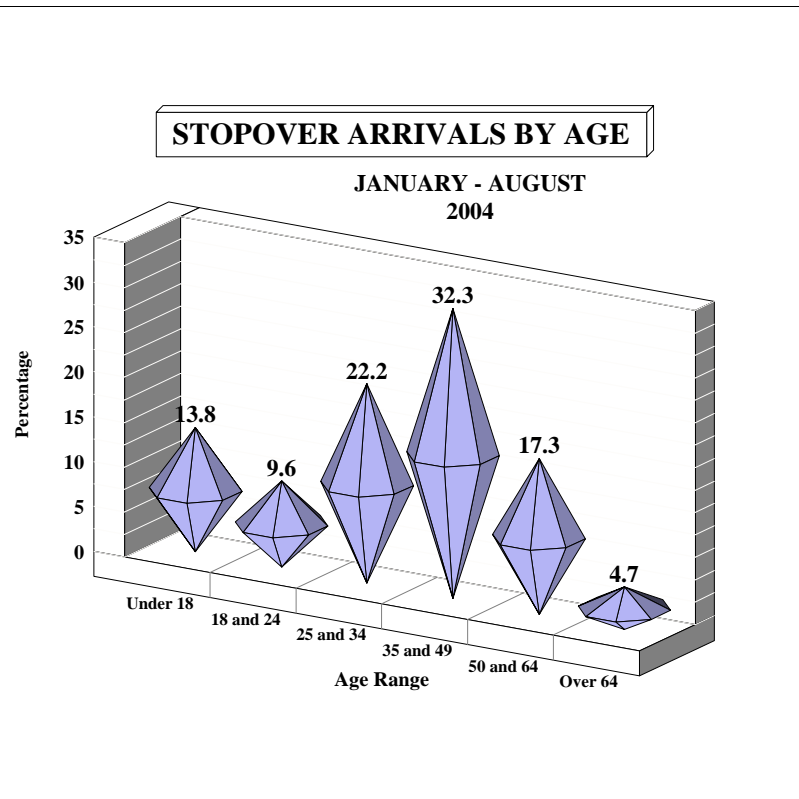


Fig. 3

**AGE DISTRIBUTION OF STOPOVER ARRIVALS**

Age	AUGUST		JAN. - AUG.		JAN. - AUG.		%Change 2004/03
	2004	% Share	2004	% Share	2003	% Share	
Under 18	22,477	17.4	142,651	13.8	126,143	13.3	13.1%
18 and 24	13,393	10.3	99,420	9.6	92,875	9.8	7.0%
25 and 34	31,529	24.3	228,987	22.2	219,814	23.1	4.2%
35 and 49	38,705	29.9	333,194	32.3	307,179	32.3	8.5%
50 and 64	18,326	14.1	178,904	17.3	161,927	17.0	10.5%
Over 64	5,096	3.9	48,939	4.7	42,635	4.5	14.8%
<b>Total</b>	<b>129,526</b>	<b>100.0</b>	<b>1,032,095</b>	<b>100.0</b>	<b>950,573</b>	<b>100.0</b>	<b>8.6%</b>

**TABLE 4**

**CRUISE PASSENGER ARRIVALS BY MONTH AND PORT OF CALL  
JANUARY - AUGUST 2004**

	MONTEGO BAY		% Change 2004/03		OCHO RIOS		% Change 2004/03		2004 TOTAL		2003 TOTAL		% Change 2004/03	
	CALLS	PAX	CALLS	PAX	CALLS	PAX	CALLS	PAX	CALLS	PAX	CALLS	PAX	CALLS	PAX
January	22	34,283	-12.0%	-21.8%	42	89,072	20.0%	18.8%	67	124,650	60	118,834	11.7%	4.9%
February	24	37,643	0.0%	-3.5%	31	77,443	-11.4%	0.1%	56	115,351	60	116,451	-6.7%	-0.9%
March	23	41,704	-14.8%	8.2%	34	86,847	-17.1%	-3.4%	58	129,266	69	128,758	-15.9%	0.4%
April	17	35,901	-10.5%	6.8%	29	73,843	-3.3%	-0.8%	46	109,744	49	108,009	-6.1%	1.6%
<b>Jan. - Apr.</b>	<b>86</b>	<b>149,531</b>	<b>-9.5%</b>	<b>-3.5%</b>	<b>136</b>	<b>327,205</b>	<b>-3.5%</b>	<b>3.3%</b>	<b>227</b>	<b>479,011</b>	<b>238</b>	<b>472,052</b>	<b>-4.6%</b>	<b>1.5%</b>
May	5	16,052	-28.6%	-5.1%	18	48,372	0.0%	2.0%	23	64,424	25	64,350	-8.0%	0.1%
June	8	24,499	33.3%	72.4%	18	51,928	5.9%	3.0%	26	76,427	24	64,812	8.3%	17.9%
July	5	17,453	0.0%	-0.9%	17	50,750	-22.7%	-23.7%	22	68,203	27	84,154	-18.5%	-19.0%
August	5	17,098	0.0%	18.0%	18	52,131	12.5%	7.2%	23	69,229	21	63,121	9.5%	9.7%
<b>May - Aug.</b>	<b>23</b>	<b>75,102</b>	<b>0.0%</b>	<b>18.8%</b>	<b>71</b>	<b>203,181</b>	<b>-2.7%</b>	<b>-4.6%</b>	<b>94</b>	<b>278,283</b>	<b>97</b>	<b>276,437</b>	<b>-3.1%</b>	<b>0.7%</b>
<b>Jan. - Aug.</b>	<b>109</b>	<b>224,633</b>	<b>-7.6%</b>	<b>2.9%</b>	<b>207</b>	<b>530,386</b>	<b>-3.3%</b>	<b>0.1%</b>	<b>321</b>	<b>757,294</b>	<b>335</b>	<b>748,489</b>	<b>-4.2%</b>	<b>1.2%</b>

- \* Note:
1. During the month of January three Cruise Ship calls with 1,668 Cruise passengers visited two ports.
  2. Included in the total Cruise passengers for the month of January, 3 calls with 1,295 passengers visited Port Antonio.
  3. During the month of February 1 Cruise Ship call with 1,174 Cruise passengers visited two ports.
  4. Included in the total Cruise passengers for the month of February, 1 calls with 265 passengers visited Port Antonio.
  5. Included in the total Cruise passengers for the month of March, 1 call with 715 passengers visited Port Antonio.
  6. During the month of April 1 Cruise Ship call with 1,181 Cruise passengers visited two ports.

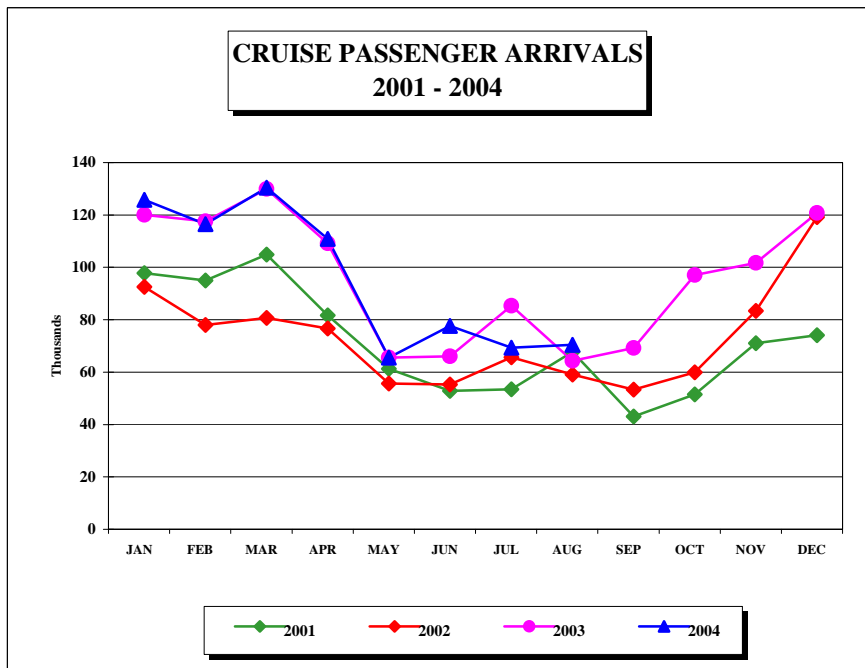


FIG. 4

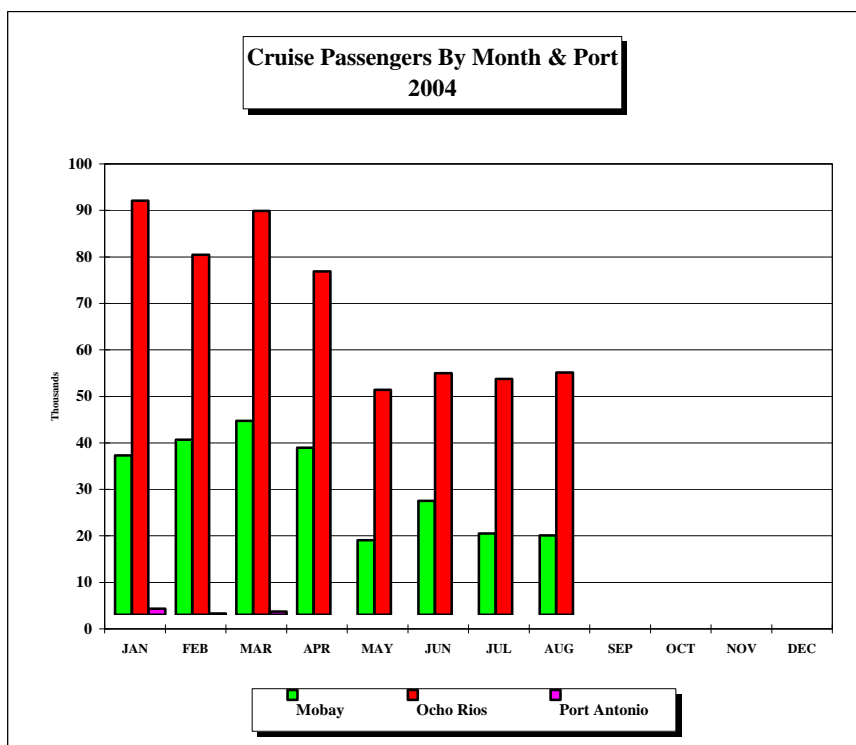


FIG. 4a

**Stopover Arrivals**  
By Intended Resort Area of Stay

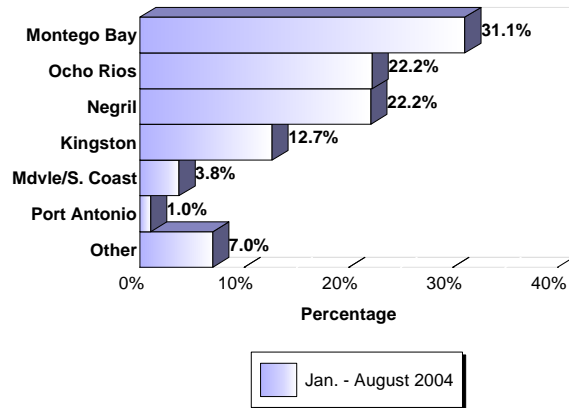


Fig. 5

**STOPOVER ARRIVALS BY INTENDED AREA OF STAY**

Area	AUGUST		JAN.- AUG.		JAN.- AUG.		%Change 2004/03
	2004	%Share	2004	%Share	2003	%Share	
Montego Bay	38,277	29.6%	321,222	31.1%	299,661	31.5%	7.2%
Ocho Rios	27,120	20.9%	229,507	22.2%	211,798	22.3%	8.4%
Negril	28,507	22.0%	228,730	22.2%	197,125	20.7%	16.0%
Kingston	17,781	13.7%	130,666	12.7%	127,738	13.4%	2.3%
Mdvle/S. Coast	5,413	4.2%	38,941	3.8%	35,791	3.8%	8.8%
Port Antonio	1,527	1.2%	10,721	1.0%	9,931	1.0%	8.0%
Other	10,901	8.4%	72,308	7.0%	68,529	7.2%	5.5%
<b>Total</b>	<b>129,526</b>	<b>100.0%</b>	<b>1,032,095</b>	<b>100.0%</b>	<b>950,573</b>	<b>100.0%</b>	<b>8.6%</b>