

TABLE 1
TOURIST ARRIVALS
January - August
2003

Month	<----- Stopovers ----->						Total		
	Foreign Nationals	+/- 2003/02	+/- 2003/01	Non-Resident Jamaicans	+/- 2003/02	+/- 2003/01	Stopover Arrivals	+/- 2003/02	+/- 2003/01
January	95,875	12.6%	-0.9%	5,431	9.0%	5.2%	101,306	12.4%	-0.6%
February	106,440	11.7%	-1.0%	5,018	6.0%	-14.3%	111,458	11.4%	-1.7%
March	124,143	0.4%	-8.9%	5,342	-18.1%	-23.1%	129,485	-0.5%	-9.6%
April	104,597	11.0%	-10.9%	7,377	14.6%	-10.3%	111,974	11.2%	-10.9%
Jan.-Apr.	431,055	8.2%	-5.9%	23,168	2.2%	-11.5%	454,223	7.9%	-6.2%
May	95,809	3.4%	-2.3%	6,212	-7.1%	-7.7%	102,021	2.7%	-2.6%
June	114,081	7.6%	2.7%	7,990	4.2%	-12.0%	122,071	7.4%	1.6%
July	133,578	5.5%	9.9%	10,461	-5.6%	9.3%	144,039	4.6%	9.8%
August	119,352	8.9%	14.2%	8,867	-2.3%	-3.2%	128,219	8.0%	12.8%
May.-Aug.	462,820	6.4%	6.4%	33,530	-2.8%	-2.9%	496,350	5.7%	5.7%
Jan.-Aug	893,875	7.3%	0.1%	56,698	-0.8%	-6.6%	950,573	6.8%	-0.3%

STOPOVER ARRIVALS FOREIGN NATIONALS

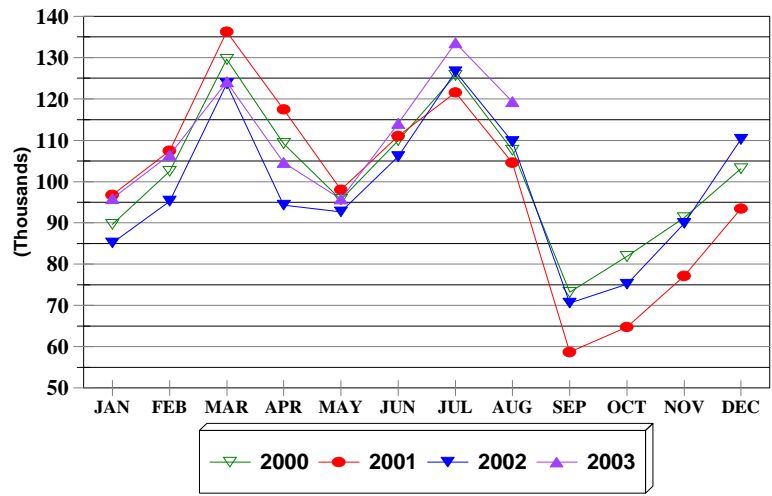


FIG. 1

STOPOVER ARRIVALS NON-RESIDENT JAMAICANS

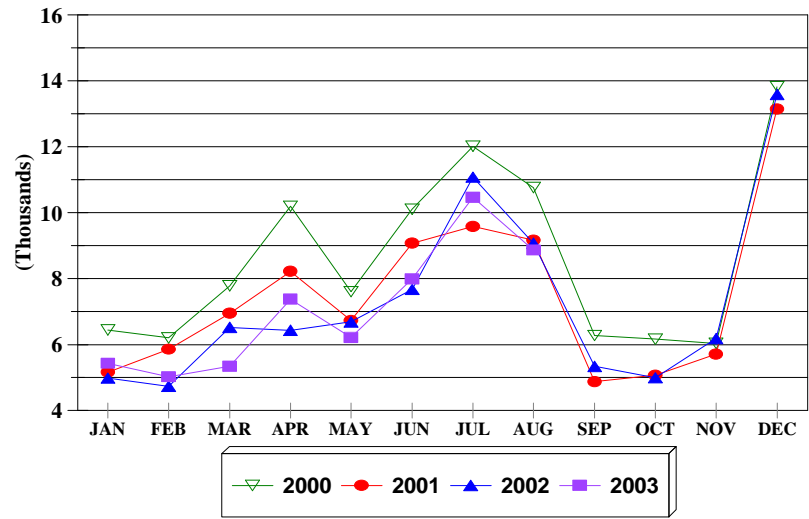


FIG. 1a

TABLE 1.1**First & Repeat Visit to Jamaica**

FOREIGN NATIONALS

2003

	Arrivals				TOTAL	% SHARE	
	First Visit	+/-	Repeat Visit	+/-		First Visit	Repeat Visit
Jan.	51,389	18.9	44,486	6.2	95,875	53.6	46.4
Feb.	56,644	12.2	49,796	11.1	106,440	53.2	46.8
Mar.	74,063	2.2	50,080	-2.3	124,143	59.7	40.3
Apr.	57,325	17.3	47,272	4.1	104,597	54.8	45.2
Jan.-Apr.	239,421	11.4	191,634	4.5	431,055	55.5	44.5
May	54,403	11.0	41,406	-5.0	95,809	56.8	43.2
Jun.	65,139	5.4	48,942	10.7	114,081	57.1	42.9
Jul.	70,593	2.4	62,985	9.2	133,578	52.8	47.2
Aug.	65,708	8.8	53,644	8.9	119,352	55.1	44.9
May-Aug.	255,843	6.5	206,977	6.3	462,820	55.3	44.7
Jan.-Aug.	495,264	8.8	398,611	5.4	893,875	55.4	44.6

TABLE 1.2

**STOPOVER ARRIVALS BY MARKET REGION
AND MONTH OF ARRIVAL 2003**

	U.S.A.				Canada	U.K. Europe	Latin America	Caribbean	Asia	Other Countries	Total
	Northeast	Mid-West	South	West							
January	28,497	21,351	14,638	4,110	11,589	16,286	1,087	2,821	635	292	101,306
February	35,006	25,007	14,940	4,002	11,506	16,812	777	2,594	578	236	111,458
March	40,262	29,316	21,505	5,449	10,779	17,088	892	3,197	695	302	129,485
April	37,597	17,405	19,687	5,514	7,937	17,523	1,041	4,324	532	414	111,974
Jan.-Apr.	141,362	93,079	70,770	19,075	41,811	67,709	3,797	12,936	2,440	1,244	454,223
May	30,120	14,016	25,523	5,353	5,276	16,282	968	3,232	449	802	102,021
June	34,991	16,810	35,215	7,646	4,917	17,017	871	3,676	522	406	122,071
July	48,733	15,071	35,202	8,459	7,175	21,608	1,051	5,249	668	823	144,039
August	47,421	13,396	24,911	8,860	6,170	21,333	792	4,437	509	390	128,219
May - Aug.	161,265	59,293	120,851	30,318	23,538	76,240	3,682	16,594	2,148	2,421	496,350
Jan. - Aug.	302,627	152,372	191,621	49,393	65,349	143,949	7,479	29,530	4,588	3,665	950,573
+/- %	8.2%	8.5%	-1.7%	1.4%	-5.0%	25.9%	-10.2%	6.8%	-0.4%	23.8%	6.8%

TABLE 2

TOTAL STOPOVER ARRIVALS BY PERMANENT RESIDENCE

	AUGUST							JANUARY - AUGUST						
	<u>2000</u>	<u>2001</u>	<u>2002</u>	<u>2003</u>	% Change			<u>2000</u>	<u>2001</u>	<u>2002</u>	<u>2003</u>	% Change		
					2003/02	2003/01	2003/00					2003/02	2003/01	2003/00
U.S.A.														
<u>NORTHEAST (NEW YORK)</u>														
Connecticut	1,997	1,930	1,993	2,476	24.2	28.3	24.0	15,906	17,399	15,754	17,130	8.7	-1.5	7.7
Delaware	433	355	439	458	4.3	29.0	5.8	3,625	4,022	3,381	3,456	2.2	-14.1	-4.7
Maine	64	109	101	149	47.5	36.7	132.8	1,717	2,071	1,692	1,784	5.4	-13.9	3.9
Maryland	3,686	3,796	4,162	4,806	15.5	26.6	30.4	23,427	25,687	25,118	27,510	9.5	7.1	17.4
Massachusetts	1,921	2,407	2,248	2,331	3.7	-3.2	21.3	20,393	24,870	20,521	21,311	3.8	-14.3	4.5
New Hampshire	135	176	185	264	42.7	50.0	95.6	2,918	3,798	2,889	3,102	7.4	-18.3	6.3
New Jersey	5,195	5,143	6,029	6,828	13.3	32.8	31.4	38,678	42,040	39,103	43,941	12.4	4.5	13.6
New York	18,232	16,847	19,412	21,097	8.7	25.2	15.7	118,147	119,346	112,606	120,034	6.6	0.6	1.6
Pennsylvania	4,246	4,211	4,747	5,484	15.5	30.2	29.2	34,710	38,577	36,529	39,966	9.4	3.6	15.1
Rhode Island	140	162	232	263	13.4	62.3	87.9	2,016	2,370	2,203	2,484	12.8	4.8	23.2
Vermont	58	41	42	66	57.1	61.0	13.8	1,170	1,395	937	1,088	16.1	-22.0	-7.0
Virginia	1,690	1,609	1,827	2,375	30.0	47.6	40.5	14,505	14,919	14,239	15,623	9.7	4.7	7.7
Washington D.C.	667	644	638	699	9.6	8.5	4.8	3,731	3,937	3,580	4,031	12.6	2.4	8.0
West Virginia	116	148	115	125	8.7	-15.5	7.8	1,319	1,545	1,203	1,167	-3.0	-24.5	-11.5
Total	38,580	37,578	42,170	47,421	12.5	26.2	22.9	282,262	301,976	279,755	302,627	8.2	0.2	7.2
<u>MIDWEST (CHICAGO)</u>														
Illinois	4,859	4,218	3,985	4,124	3.5	-2.2	-15.1	42,182	38,977	36,005	37,577	4.4	-3.6	-10.9
Indiana	824	729	836	840	0.5	15.2	1.9	10,193	9,307	8,893	10,030	12.8	7.8	-1.6
Iowa	409	315	318	377	18.6	19.7	-7.8	4,808	5,205	5,180	5,711	10.3	9.7	18.8
Kansas	308	324	381	328	-13.9	1.2	6.5	3,682	3,836	3,169	3,136	-1.0	-18.2	-14.8
Kentucky	385	360	387	451	16.5	25.3	17.1	4,107	3,942	4,443	4,450	0.2	12.9	8.4
Michigan	1,740	1,405	1,394	1,537	10.3	9.4	-11.7	22,139	22,616	18,015	21,250	18.0	-6.0	-4.0
Minnesota	664	493	689	705	2.3	43.0	6.2	15,470	14,849	13,591	15,403	13.3	3.7	-0.4
Missouri	2,240	1,417	1,858	2,018	8.6	42.4	-9.9	15,167	13,566	13,820	15,739	13.9	16.0	3.8
Nebraska	294	245	264	357	35.2	45.7	21.4	2,699	3,253	2,742	3,176	15.8	-2.4	17.7
North Dakota	56	47	32	45	40.6	-4.3	-19.6	821	810	811	842	3.8	4.0	2.6
Ohio	1,532	1,503	1,493	1,573	5.4	4.7	2.7	15,353	14,978	14,760	14,428	-2.2	-3.7	-6.0
South Dakota	64	54	60	67	11.7	24.1	4.7	937	928	874	1,260	44.2	35.8	34.5
Wisconsin	992	866	796	974	22.4	12.5	-1.8	20,831	20,815	18,159	19,370	6.7	-6.9	-7.0
Total	14,367	11,976	12,493	13,396	7.2	11.9	-6.8	158,389	153,082	140,462	152,372	8.5	-0.5	-3.8

TABLE 2

TOTAL STOPOVER ARRIVALS BY PERMANENT RESIDENCE

	AUGUST							JANUARY - AUGUST						
	<u>2000</u>	<u>2001</u>	<u>2002</u>	<u>2003</u>	% Change			<u>2000</u>	<u>2001</u>	<u>2002</u>	<u>2003</u>	% Change		
					2003/02	2003/01	2003/00					2003/02	2003/01	2003/00
<u>SOUTH (MIAMI)</u>														
Alabama	562	596	621	662	6.6	11.1	17.8	5,557	5,295	5,097	5,555	9.0	4.9	-0.0
Arkansas	287	281	307	260	-15.3	-7.5	-9.4	2,239	2,193	2,070	2,216	7.1	1.0	-1.0
Florida	11,606	11,620	12,041	11,567	-3.9	-0.5	-0.3	85,008	85,271	84,090	83,877	-0.3	-1.6	-1.3
Georgia	3,394	3,701	4,115	3,546	-13.8	-4.2	4.5	27,911	30,603	33,085	30,828	-6.8	0.7	10.5
Louisiana	926	1,090	849	648	-23.7	-40.6	-30.0	5,831	5,976	5,652	5,253	-7.1	-12.1	-9.9
Mississippi	281	335	274	247	-9.9	-26.3	-12.1	2,684	2,427	2,422	2,191	-9.5	-9.7	-18.4
North Carolina	1,134	1,087	1,144	1,289	12.7	18.6	13.7	12,269	12,959	12,114	13,005	7.4	0.4	6.0
Oklahoma	478	380	453	441	-2.6	16.1	-7.7	3,599	3,185	3,277	3,332	1.7	4.6	-7.4
Puerto Rico	129	122	111	149	34.2	22.1	15.5	1,156	1,031	1,129	882	-21.9	-14.5	-23.7
South Carolina	496	528	669	676	1.0	28.0	36.3	5,215	5,862	5,586	5,837	4.5	-0.4	11.9
Tennessee	1,117	918	1,033	936	-9.4	2.0	-16.2	9,163	8,263	9,181	9,175	-0.1	11.0	0.1
Texas	4,816	5,004	4,835	4,490	-7.1	-10.3	-6.8	32,226	29,255	31,165	29,470	-5.4	0.7	-8.6
Total	25,226	25,662	26,452	24,911	-5.8	-2.9	-1.2	192,858	192,320	194,868	191,621	-1.7	-0.4	-0.6
<u>WEST (LOS ANGELES)</u>														
Alaska	21	43	15	38	153.3	-11.6	81.0	231	257	167	262	56.9	1.9	13.4
Arizona	774	556	330	303	-8.2	-45.5	-60.9	4,653	5,637	3,269	3,223	-1.4	-42.8	-30.7
California	5,894	5,505	6,179	6,866	11.1	24.7	16.5	31,808	31,669	31,021	31,322	1.0	-1.1	-1.5
Colorado	492	460	527	474	-10.1	3.0	-3.7	5,249	5,238	5,194	4,732	-8.9	-9.7	-9.8
Hawaii	19	12	36	29	-19.4	141.7	52.6	172	189	152	169	11.2	-10.6	-1.7
Idaho	69	53	56	77	37.5	45.3	11.6	796	873	706	784	11.0	-10.2	-1.5
Montana	34	35	24	29	20.8	-17.1	-14.7	385	484	465	578	24.3	19.4	50.1
Nevada	231	203	190	223	17.4	9.9	-3.5	1,517	1,481	1,343	1,749	30.2	18.1	15.3
New Mexico	74	77	66	90	36.4	16.9	21.6	761	875	695	667	-4.0	-23.8	-12.4
Oregon	264	168	245	162	-33.9	-3.6	-38.6	1,860	1,701	1,637	1,522	-7.0	-10.5	-18.2
Utah	104	89	107	141	31.8	58.4	35.6	855	765	992	1,118	12.7	46.1	30.8
Washington	422	346	350	397	13.4	14.7	-5.9	3,336	3,135	2,802	2,963	5.7	-5.5	-11.2
Wyoming	19	30	41	31	-24.4	3.3	63.2	306	278	280	304	8.6	9.4	-0.7
Total	8,417	7,577	8,166	8,860	8.5	16.9	5.3	51,929	52,582	48,723	49,393	1.4	-6.1	-4.9
TOTAL U.S.A.	86,590	82,793	89,281	94,588	5.9	14.2	9.2	685,438	699,960	663,808	696,013	4.9	-0.6	1.5

TABLE 2

TOTAL STOPOVER ARRIVALS BY PERMANENT RESIDENCE

	<u>AUGUST</u>							<u>JANUARY - AUGUST</u>						
	<u>2000</u>	<u>2001</u>	<u>2002</u>	<u>2003</u>	<u>% Change</u>			<u>2000</u>	<u>2001</u>	<u>2002</u>	<u>2003</u>	<u>% Change</u>		
					2003/02	2003/01	2003/00					2003/02	2003/01	2003/00
<u>CANADA (TORONTO)</u>														
Alberta	308	233	245	236	-3.7	1.3	-23.4	3,129	3,257	2,568	2,709	5.5	-16.8	-13.4
British Columbia	194	231	157	170	8.3	-26.4	-12.4	2,215	2,338	1,785	1,912	7.1	-18.2	-13.7
Manitoba	54	59	57	35	-38.6	-40.7	-35.2	2,007	2,164	1,213	2,123	75.0	-1.9	5.8
New Brunswick	18	33	16	20	25.0	-39.4	11.1	1,046	1,059	702	665	-5.3	-37.2	-36.4
Newfoundland	41	22	45	30	-33.3	36.4	-26.8	442	429	433	394	-9.0	-8.2	-10.9
Nova Scotia	49	49	42	46	9.5	-6.1	-6.1	1,636	1,795	907	1,210	33.4	-32.6	-26.0
Ontario	5,497	6,555	5,867	5,133	-12.5	-21.7	-6.6	53,158	60,218	52,519	47,988	-8.6	-20.3	-9.7
P.E. Island	1	4	2	5	150.0	25.0	400.0	109	108	100	132	32.0	22.2	21.1
Quebec	570	655	429	454	5.8	-30.7	-20.4	7,834	10,082	7,795	7,186	-7.8	-28.7	-8.3
Saskatchewan	51	62	17	26	52.9	-58.1	-49.0	745	983	519	876	68.8	-10.9	17.6
Other Canada	37	43	14	15	7.1	-65.1	-59.5	255	333	216	154	-28.7	-53.8	-39.6
Total	6,820	7,946	6,891	6,170	-10.5	-22.4	-9.5	72,576	82,766	68,757	65,349	-5.0	-21.0	-10.0
<u>LONDON OFFICE</u>														
<u>Northern Europe</u>														
U.K.	11,322	10,798	10,742	13,769	28.2	27.5	21.6	88,776	84,067	79,849	97,223	21.8	15.6	9.5
Denmark	38	55	27	21	-22.2	-61.8	-44.7	702	549	366	265	-27.6	-51.7	-62.3
Finland	32	14	13	13	0.0	-7.1	-59.4	265	271	278	314	12.9	15.9	18.5
Norway	55	33	29	32	10.3	-3.0	-41.8	665	557	603	583	-3.3	4.7	-12.3
Sweden	47	41	31	35	12.9	-14.6	-25.5	930	894	726	623	-14.2	-30.3	-33.0
<u>Southern Europe</u>														
Greece	42	13	54	42	-22.2	223.1	0.0	362	128	214	201	-6.1	57.0	-44.5
Italy	2,292	2,431	2,530	3,877	53.2	59.5	69.2	11,068	10,021	9,105	17,746	94.9	77.1	60.3
Portugal	132	110	86	63	-26.7	-42.7	-52.3	364	278	690	338	-51.0	21.6	-7.1
Spain	241	571	1,025	1,085	5.9	90.0	350.2	878	2,688	4,277	4,803	12.3	78.7	447.0
<u>Western Europe</u>														
Austria	203	137	105	109	3.8	-20.4	-46.3	1,839	1,551	1,146	1,356	18.3	-12.6	-26.3
Belgium	71	84	81	214	164.2	154.8	201.4	725	737	834	1,539	84.5	108.8	112.3
France	267	208	211	272	28.9	30.8	1.9	2,733	1,862	1,902	1,856	-2.4	-0.3	-32.1
Germany	1,854	1,389	925	1,071	15.8	-22.9	-42.2	17,150	13,606	9,041	10,391	14.9	-23.6	-39.4
Luxemburg	20	12	12	30	150.0	150.0	50.0	73	63	73	89	21.9	41.3	21.9
Netherlands	389	219	207	375	81.2	71.2	-3.6	2,661	1,951	1,548	2,697	74.2	38.2	1.4
Switzerland	158	99	123	126	2.4	27.3	-20.3	2,320	1,648	1,256	1,457	16.0	-11.6	-37.2
<u>Central/East Europe</u>														
Czechoslovakia	20	9	19	15	-21.1	66.7	-25.0	121	212	214	218	1.9	2.8	80.2
Hungary	4	9	9	13	44.4	44.4	225.0	122	109	174	115	-33.9	5.5	-5.7
Poland	27	14	45	34	-24.4	142.9	25.9	464	251	439	620	41.2	147.0	33.6
Russia	87	43	87	58	-33.3	34.9	-33.3	573	635	777	800	3.0	26.0	39.6
Other Europe	82	81	63	79	25.4	-2.5	-3.7	647	617	783	715	-8.7	15.9	10.5
Total	17,383	16,370	16,424	21,333	29.9	30.3	22.7	133,438	122,695	114,295	143,949	25.9	17.3	7.9

TABLE 2

TOTAL STOPOVER ARRIVALS BY PERMANENT RESIDENCE

	AUGUST							JANUARY - AUGUST						
	2000	2001	2002	2003	% Change			2000	2001	2002	2003	% Change		
					2003/02	2003/01	2003/00					2003/02	2003/01	2003/00
LATIN AMERICA														
CENTRAL AMERICA														
Mexico	215	280	180	119	-33.9	-57.5	-44.7	1,586	1,860	1,319	1,244	-5.7	-33.1	-21.6
Belize	50	55	40	70	75.0	27.3	40.0	381	339	379	760	100.5	124.2	99.5
Costa Rica	54	30	39	66	69.2	120.0	22.2	396	408	456	370	-18.9	-9.3	-6.6
El Salvador	111	27	7	17	142.9	-37.0	-84.7	160	156	147	89	-39.5	-42.9	-44.4
Guatemala	16	35	37	32	-13.5	-8.6	100.0	195	229	283	214	-24.4	-6.6	9.7
Honduras	19	8	11	18	63.6	125.0	-5.3	211	113	112	114	1.8	0.9	-46.0
Nicaragua	3	3	4	1	-75.0	-66.7	-66.7	33	28	57	24	-57.9	-14.3	-27.3
Panama	109	111	107	83	-22.4	-25.2	-23.9	895	931	699	677	-3.1	-27.3	-24.4
Total	577	549	425	406	-4.5	-26.0	-29.6	3,857	4,064	3,452	3,492	1.2	-14.1	-9.5
SOUTH AMERICA														
Argentina	86	102	36	28	-22.2	-72.5	-67.4	798	1,004	322	458	42.2	-54.4	-42.6
Bolivia	11	8	5	6	20.0	-25.0	-45.5	41	49	39	44	12.8	-10.2	7.3
Brazil	142	70	37	39	5.4	-44.3	-72.5	777	652	632	507	-19.8	-22.2	-34.7
Chile	63	42	39	15	-61.5	-64.3	-76.2	577	493	489	266	-45.6	-46.0	-53.9
Colombia	176	99	23	29	26.1	-70.7	-83.5	1,217	1,231	694	496	-28.5	-59.7	-59.2
Ecuador	19	61	8	3	-62.5	-95.1	-84.2	125	236	118	54	-54.2	-77.1	-56.8
Guyana	205	155	225	163	-27.6	5.2	-20.5	1,282	1,088	1,237	1,171	-5.3	7.6	-8.7
Paraguay	4	3	1	0	-100.0	-100.0	-100.0	19	20	18	40	122.2	100.0	110.5
Peru	37	38	15	13	-13.3	-65.8	-64.9	239	276	250	229	-8.4	-17.0	-4.2
Surinam	14	21	14	23	64.3	9.5	64.3	179	193	127	201	58.3	4.1	12.3
Uruguay	8	13	5	3	-40.0	-76.9	-62.5	65	111	58	34	-41.4	-69.4	-47.7
Venezuela	123	81	95	64	-32.6	-21.0	-48.0	763	889	884	481	-45.6	-45.9	-37.0
Other South America	5	0	0	0	-	-	-	8	4	11	6	-45.5	50.0	-25.0
Total	893	693	503	386	-23.3	-44.3	-56.8	6,090	6,246	4,879	3,987	-18.3	-36.2	-34.5
Total Latin America	1,470	1,242	928	792	-14.7	-36.2	-46.1	9,947	10,310	8,331	7,479	-10.2	-27.5	-24.8

TABLE 2

TOTAL STOPOVER ARRIVALS BY PERMANENT RESIDENCE

	AUGUST							JANUARY - AUGUST						
	2000	2001	2002	2003	% Change			2000	2001	2002	2003	% Change		
					2003/02	2003/01	2003/00					2003/02	2003/01	2003/00
CARIBBEAN														
Antigua	199	137	211	213	0.9	55.5	7.0	1,241	1,001	1,174	1,290	9.9	28.9	3.9
Bahamas	808	813	443	278	-37.2	-65.8	-65.6	4,654	4,718	2,723	1,989	-27.0	-57.8	-57.3
Barbados	567	508	585	573	-2.1	12.8	1.1	3,498	2,998	3,290	3,695	12.3	23.2	5.6
Bermuda	270	197	209	247	18.2	25.4	-8.5	1,289	1,188	1,265	1,625	28.5	36.8	26.1
British Virgin Is.	51	82	49	70	42.9	-14.6	37.3	319	351	318	406	27.7	15.7	27.3
Cayman Is.	1,134	1,058	1,144	1,106	-3.3	4.5	-2.5	7,587	7,899	7,408	7,871	6.3	-0.4	3.7
Dominica	79	44	37	55	48.6	25.0	-30.4	336	292	252	266	5.6	-8.9	-20.8
Grenada	105	49	48	85	77.1	73.5	-19.0	548	381	409	469	14.7	23.1	-14.4
Monsterrat	16	11	9	23	155.6	109.1	43.8	89	81	59	87	47.5	7.4	-2.2
St. Kitts/Nevis/Anguilla	95	58	87	100	14.9	72.4	5.3	612	457	498	543	9.0	18.8	-11.3
St. Lucia	262	200	212	248	17.0	24.0	-5.3	1,202	986	1,094	1,290	17.9	30.8	7.3
St. Vincent	125	81	101	100	-1.0	23.5	-20.0	464	390	461	471	2.2	20.8	1.5
Turks & Caicos Is.	78	105	132	136	3.0	29.5	74.4	377	663	661	705	6.7	6.3	87.0
Trinidad & Tobago	681	559	594	733	23.4	31.1	7.6	4,348	4,417	4,688	4,989	6.4	12.9	14.7
Comm. Caribbean	4,470	3,902	3,861	3,967	2.7	1.7	-11.3	26,564	25,822	24,300	25,696	5.7	-0.5	-3.3
Aruba	65	25	45	59	31.1	136.0	-9.2	244	198	276	359	30.1	81.3	47.1
Bonaire	0	0	0	7	-	-	-	0	0	0	28	-	-	-
Cuba	129	93	59	54	-8.5	-41.9	-58.1	967	482	410	457	11.5	-5.2	-52.7
Curacao	43	42	66	93	40.9	121.4	116.3	377	486	676	995	47.2	104.7	163.9
Dominican Republic	76	120	78	81	3.8	-32.5	6.6	565	660	647	572	-11.6	-13.3	1.2
Guadelope	5	1	4	2	-50.0	100.0	-60.0	48	45	58	61	5.2	35.6	27.1
Haiti	75	58	65	47	-27.7	-19.0	-37.3	362	374	557	529	-5.0	41.4	46.1
St. Maarten	74	46	49	85	73.5	84.8	14.9	329	354	355	481	35.5	35.9	46.2
All other Caribbean	30	47	43	42	-2.3	-10.6	40.0	366	368	363	352	-3.0	-4.3	-3.8
Other Caribbean	497	432	409	470	14.9	8.8	-5.4	3,258	2,967	3,342	3,834	14.7	29.2	17.7
TOTAL CARIBBEAN	4,967	4,334	4,270	4,437	3.9	2.4	-10.7	29,822	28,789	27,642	29,530	6.8	2.6	-1.0
OTHER COUNTRIES														
African Countries	102	108	106	119	12.3	10.2	16.7	897	927	832	742	-10.8	-20.0	-17.3
Isreal	95	125	70	75	7.1	-40.0	-21.1	645	736	460	540	17.4	-26.6	-16.3
Saudi Arabia	7	5	10	8	-20.0	60.0	14.3	34	30	43	32	-25.6	6.7	-5.9
Turkey	17	16	1	11	1000.0	-31.3	-35.3	235	165	78	92	17.9	-44.2	-60.9
Other Middle East	38	23	54	34	-37.0	47.8	-10.5	193	212	264	232	-12.1	9.4	20.2
India & Pakistan	55	54	28	62	121.4	14.8	12.7	468	548	362	404	11.6	-26.3	-13.7
Japan	539	428	256	290	13.3	-32.2	-46.2	4,983	4,283	2,932	2,523	-13.9	-41.1	-49.4
China	53	42	48	41	-14.6	-2.4	-22.6	395	344	333	371	11.4	7.8	-6.1
Taiwan	1	3	5	9	80.0	200.0	800.0	64	52	50	56	12.0	7.7	-12.5
Korea	13	17	14	17	21.4	0.0	30.8	144	185	165	121	-26.7	-34.6	-16.0
Philippines	25	31	156	61	-60.9	96.8	144.0	388	328	523	846	61.8	157.9	118.0
Singapore	1	7	3	5	66.7	-28.6	400.0	30	102	68	77	13.2	-24.5	156.7
Other Asia	37	26	26	24	-7.7	-7.7	-35.1	208	250	174	193	10.9	-22.8	-7.2
Australia	100	79	120	115	-4.2	45.6	15.0	1,002	929	1,010	1,608	59.2	73.1	60.5
New Zealand	19	20	5	24	380.0	20.0	26.3	152	197	217	378	74.2	91.9	148.7
All Other Ctries	7	0	2	4	100.0	-	-42.9	58	44	57	38	-33.3	-13.6	-34.5
Total	1,109	984	904	899	-0.6	-8.6	-18.9	9,896	9,332	7,568	8,253	9.1	-11.6	-16.6
GRAND TOTAL	118,339	113,669	118,698	128,219	8.0	12.8	8.3	941,117	953,852	890,401	950,573	6.8	-0.3	1.0

STOPOVER VISITORS BY MARKET SHARE

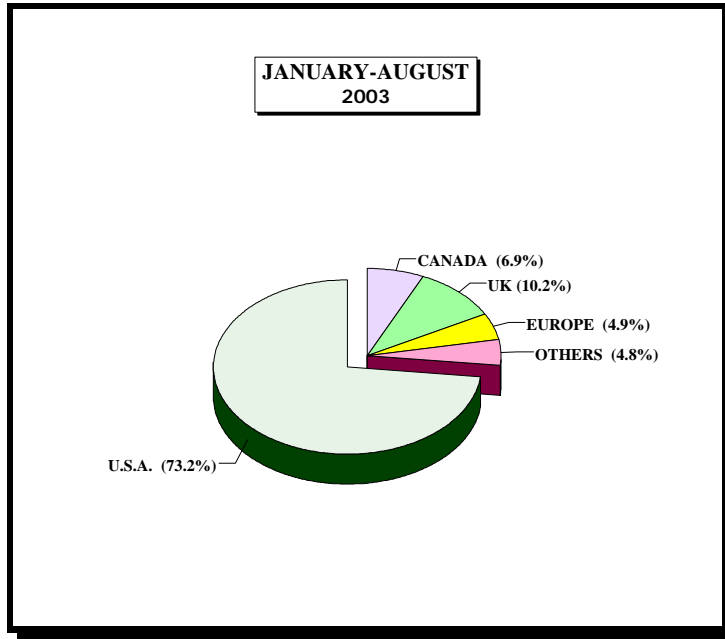


Fig. 2

Country	August 2003	% Share	Jan. - Aug. 2003	% Share	Jan. - Aug. 2002	% Share	%Change 2003/02
U.S.A	94,588	73.8%	696,013	73.2%	663,808	74.6%	4.9%
CANADA	6,170	4.8%	65,349	6.9%	68,757	7.7%	-5.0%
U.K.	13,769	10.7%	97,223	10.2%	79,849	9.0%	21.8%
EUROPE	7,564	5.9%	46,726	4.9%	34,446	3.9%	35.7%
OTHERS	6,128	4.8%	45,262	4.8%	43,541	4.9%	4.0%
Total	128,219	100.0%	950,573	100.0%	890,401	100.0%	6.8%

TABLE 3

<u>AVERAGE LENGTH OF STAY (Nights)</u>					
<u>FOREIGN NATIONALS</u>					
	All Types of Accommodation			Hotel	
	2002	2003		2002	2003
January	10.4	10.1		6.7	6.6
February	9.0	8.8		6.5	6.3
March	8.4	8.5		6.2	6.1
April	9.3	8.9		6.2	6.2
May	9.2	9.2		5.8	5.9
June	10.6	10.5		6.1	6.2
July	11.6	11.5		6.6	6.7
August	10.4	10.4		6.5	6.7
Jan. - Aug.	9.9	9.8		6.3	6.3

Note: LENGTH OF STAY IS BASED ON INTENDED LENGTH OF STAY

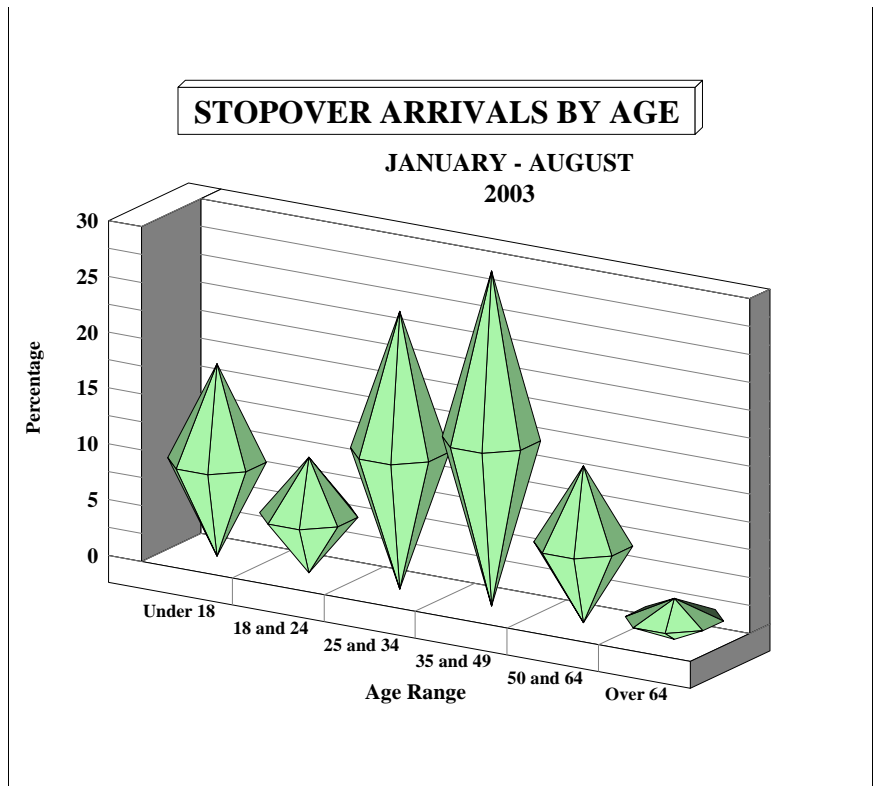


Fig. 3

AGE DISTRIBUTION OF STOPOVER ARRIVALS

Age	AUGUST		JAN.- AUG.		JAN.- AUG.		%Change 2003/02
	2003	% Share	2003	% Share	2002	% Share	
Under 18	22,014	17.2	126,143	13.3	116,066	13.0	8.7%
18 and 24	13,189	10.3	92,875	9.8	87,762	9.9	5.8%
25 and 34	31,904	24.9	219,814	23.1	213,482	24.0	3.0%
35 and 49	38,419	30.0	307,179	32.3	287,831	32.3	6.7%
50 and 64	18,008	14.0	161,927	17.0	145,820	16.4	11.0%
Over 64	4,685	3.7	42,635	4.5	39,440	4.4	8.1%
Total	128,219	100.0	950,573	100.0	890,401	100.0	6.8%

TABLE 4**CRUISE PASSENGER ARRIVALS BY MONTH AND PORT OF CALL
JANUARY - AUGUST 2003**

	MONTEGO BAY		% Change 2003/02		OCHO RIOS		% Change 2003/02		2003 TOTAL		2002 TOTAL		% Change 2003/02	
	CALLS	PAX	CALLS	PAX	CALLS	PAX	CALLS	PAX	CALLS	PAX	CALLS	PAX	CALLS	PAX
January	25	43,827	56.3%	74.4%	35	75,007	16.7%	13.2%	60	118,834	46	91,399	30.4%	30.0%
February	24	39,006	71.4%	121.0%	35	77,390	20.7%	30.8%	60	116,451	43	76,799	39.5%	51.6%
March	27	38,558	92.9%	100.8%	41	89,932	57.7%	49.2%	69	128,758	41	79,547	68.3%	61.9%
April	19	33,601	216.7%	335.1%	30	74,408	-6.3%	9.9%	49	108,009	38	75,442	28.9%	43.2%
Jan. - Apr.	95	154,992	90.0%	122.3%	141	316,737	20.5%	25.0%	238	472,052	168	323,187	41.7%	46.1%
May	7	16,907	40.0%	52.0%	18	47,443	5.9%	9.5%	25	64,350	22	54,453	13.6%	18.2%
June	6	14,214	50.0%	43.2%	17	50,403	6.3%	14.0%	24	64,812	20	54,125	20.0%	19.7%
July	5	17,608	0.0%	39.2%	22	66,546	22.2%	28.3%	27	84,154	23	64,512	17.4%	30.4%
August	5	14,485	25.0%	48.5%	16	48,636	-5.9%	0.9%	21	63,121	21	57,938	0.0%	8.9%
May - Aug.	23	63,214	27.8%	45.5%	73	213,028	7.4%	13.6%	97	276,437	86	231,028	12.8%	19.7%
Jan. - Aug.	118	218,206	73.5%	92.8%	214	529,765	15.7%	20.1%	335	748,489	254	554,215	31.9%	35.1%

- * Note:
1. During the month of January three Cruise Ship calls with 3,174 Cruise passengers visited two ports.
 2. During the month of February 2 Cruise Ship calls with 2,798 Cruise passengers visited two ports.
 3. Included in the total Cruise passengers for the month of February, 1 call with 55 passengers visited Port Antoinio.
 4. During the month of March 3 Cruise Ship calls with 2,679 Cruise passengers visited two ports.
 5. Included in the total Cruise passengers for the month of March, 1 call with 268 passengers visited Kingston.
 6. Included in the total Cruise passengers for the month of June, 1 call with 195 passengers visited Port Antonio.
 7. During the month of June 1 Cruise Ship call with 3,494 Cruise passengers visited two ports.

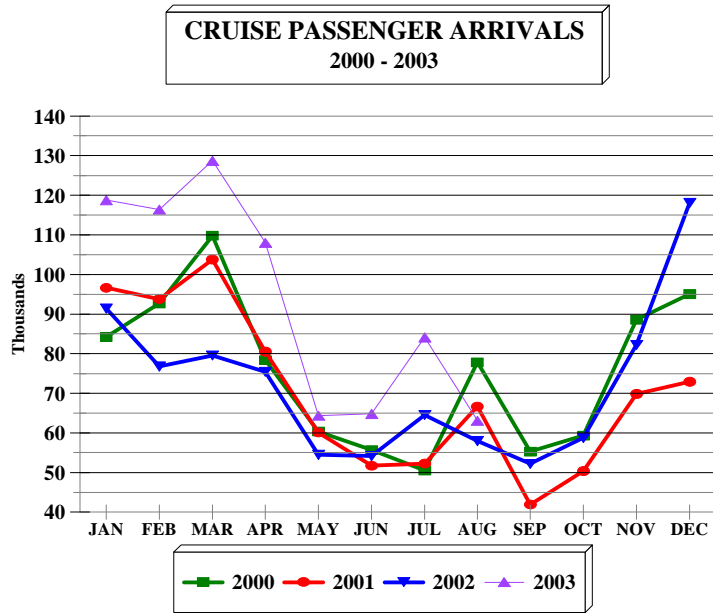


FIG. 4

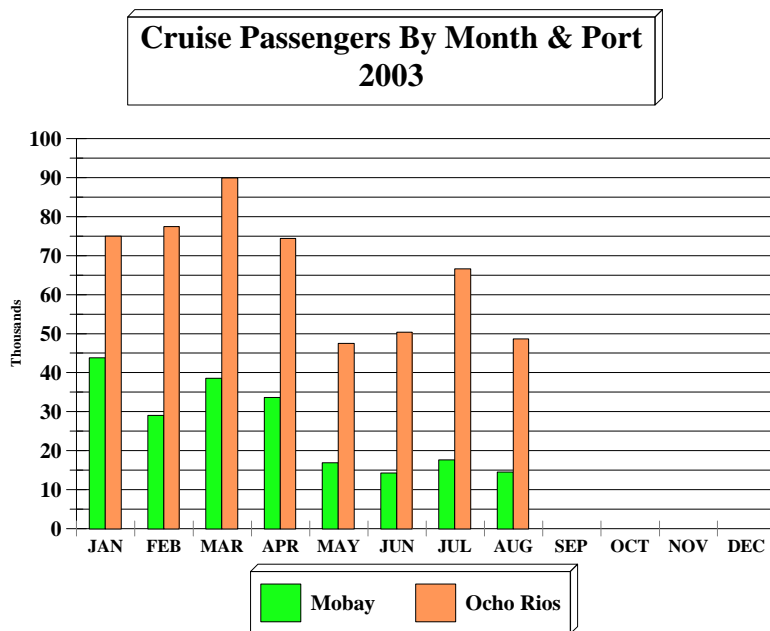


FIG. 4a

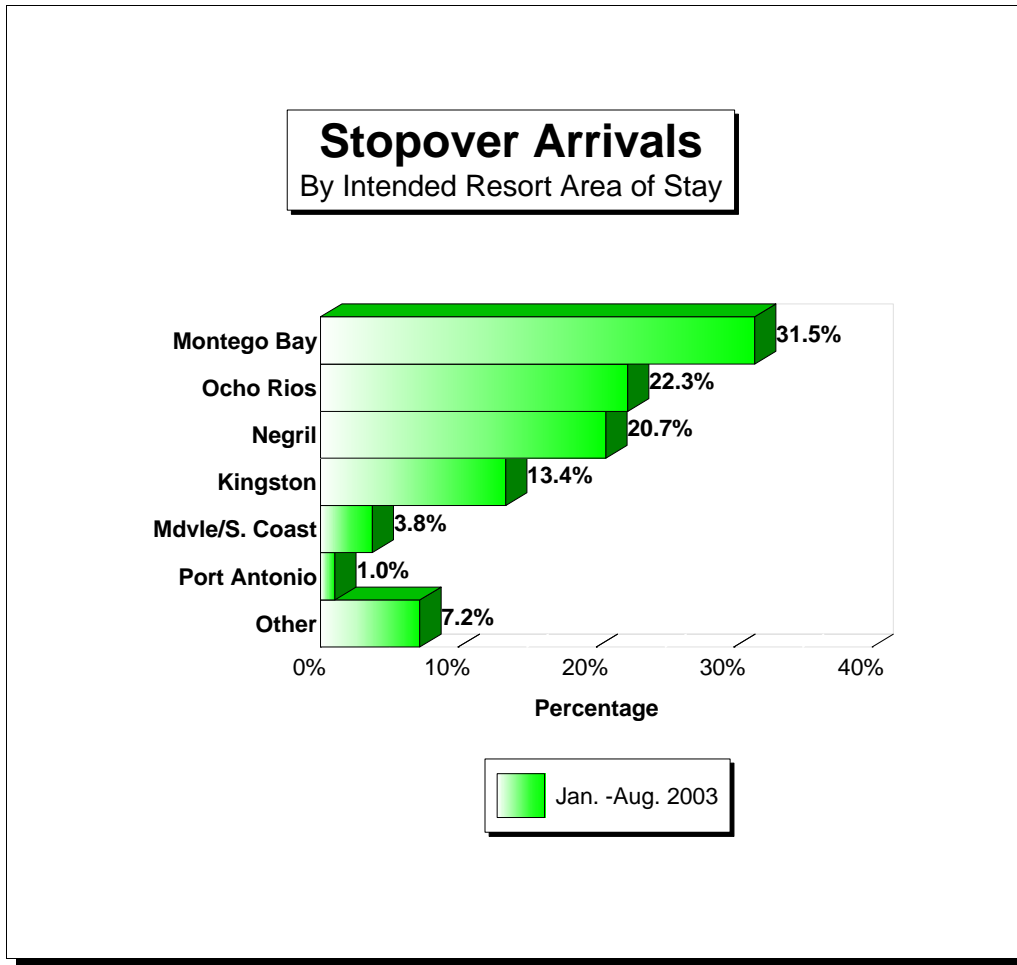


Fig. 5

STOPOVER ARRIVALS BY INTENDED AREA OF STAY

Area	AUGUST		JAN.-AUG.		JAN.-AUG.		%Change 2003/02
	2003	%Share	2003	%Share	2002	%Share	
Montego Bay	38,459	30.0%	299,661	31.5%	279,351	31.4%	7.3%
Ocho Rios	30,109	23.5%	211,798	22.3%	197,283	22.2%	7.4%
Negril	23,895	18.6%	197,125	20.7%	184,578	20.7%	6.8%
Kingston	17,616	13.7%	127,738	13.4%	123,353	13.9%	3.6%
Mdvle/S. Coast	5,671	4.4%	35,791	3.8%	34,183	3.8%	4.7%
Port Antonio	1,536	1.2%	9,931	1.0%	9,399	1.1%	5.7%
Other	10,933	8.5%	68,529	7.2%	62,253	7.0%	10.1%
Total	128,219	100.0%	950,573	100.0%	890,400	100.0%	6.8%