

MONTHLY STATISTICAL REPORT

Volume X111, Issue 1V
April 2003

TOURIST (Stopovers)

Stopover arrivals in April 2003 were **111,974**, an increase of **11%** over the **100,689** recorded for April 2002. Cumulatively, stopovers for the January to April period increased by **8%**. There was a total of **454,223** stopovers for the period compared to **420,996** in 2002.

United States

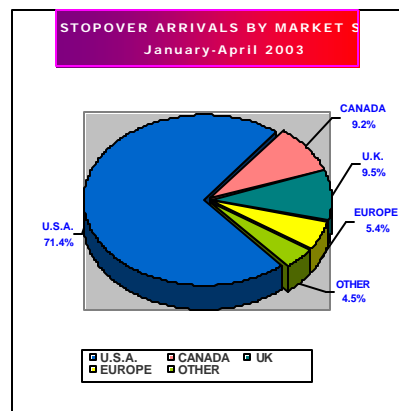
Stopover arrivals from the United States market increased by **9%** in April with a total of **80,203** visitors compared to the **73,761** visitors who came in April 2002. Three of the main marketing regions recorded increases. The Northeast increased by **15%**, the Midwest by **12%**, and the West by **5%**. The South declined by **3%**.

For the January to April period the US market increased by **6%**. Total visitors from this market for the period was **324,286** compared to **306,843** for the corresponding period in 2002. The Northeast increased by **7%**, the Midwest by **9%** the South by under **1**, but the West declined by **1%**.

Canada

In April, the Canadian market declined by **7%** and was down also by **24%** against April 2001. Total stopovers from the Canadian market in April were **7,937** compared to **8,501** in 2002. While the leading province Ontario declined by **5%**, the second most important visitor-producing province of Quebec also declined by **15%**. The provinces of Saskatchewan and Nova Scotia recorded good growth though from relatively small

bases. The other three leading provinces British Columbia Manitoba and Alberta recorded declines. Cumulatively, the Canadian market declined by **1%** in the January to April period with a total of **41,811** stopovers compared to **42,263** in 2002.



Europe

The European market continued to show remarkable improvement when it recorded a **33%** increase in April 2003. The market provided a total of **17,523** stopover visitors compared to the **13,206** recorded in April 2002 and was also up against the **15,535** stopovers who came in April 2001. The United Kingdom and Germany increased by **22%** and **31%** respectively. All the main European country markets recorded increases. Belgium, Austria, Switzerland, and Italy recorded increases despite from relatively small bases. Spain recorded a decline.

Cumulatively, for the January to April period, the European market increased by **26%**. Total stopovers for the period was **67,709**, compared to **53,604** in 2002. Both the United King-

dom and Germany recorded increases. The United Kingdom with a total of **42,979** stopovers recorded an increase of **14%** while Germany with **6,002** visitors recorded an increase of **26%**.

Latin America

The Latin American market increased by **2%** in April with a total of **1,041** stopovers compared to **1,017** in April 2002. While Mexico and Colombia increased by **3%** and **204%** respectively, the other three leading countries recorded declines. Chile (**84%**), Argentina (**11%**) and Brazil (**47%**).

For the January to April period, the Latin American market increased by **7%** with a total of **3,797** visitors compared to **3,564** for the corresponding period in 2002.

Visitor arrivals from the Caribbean increased by **36%** in April 2003 with a total of **4,324** visitors compared to **3,172** recorded for April 2002.

The Caribbean

Visitors to Jamaica from the Caribbean region increased by **36%** in April. A total of **4,324** visitors from other Caribbean countries visited Jamaica, down from **3,172** in April 2002. Arrivals were up by under **1%** against April 2000.

The major Caribbean countries which provided visitors to Jamaica in April were: the Cayman Islands (**1,221**), Trinidad and Tobago (**771**), Barbados (**502**), the Bahamas (**266**), Antigua (**154**), Bermuda (**231**), and St. Lucia (**153**). Except for the Bahamas which declined in April, all the other major Caribbean countries recorded increases against April 2002.

Cumulatively, the Caribbean stopover arrivals to Jamaica in the January to April period increased by **15%** moving from **11,213** in 2002 to **12,936** in 2003. In the period under review, the top Caribbean countries that provided stopover visitors to Jamaica were the Cayman Islands with **3,589**, Trinidad and Tobago with **2,267**, Barbados with **1,613** and the Bahamas with **823**.

Japan

The Japanese market declined by **35%** in April with a total of **311** stopovers compared to **479** in April 2002 but was down by **50%** against the **624** for the corresponding period in 2001.

For the January to April period, Japan declined by **14%** with **1,357** visitors compared to **1,569** in 2002.

Other Countries

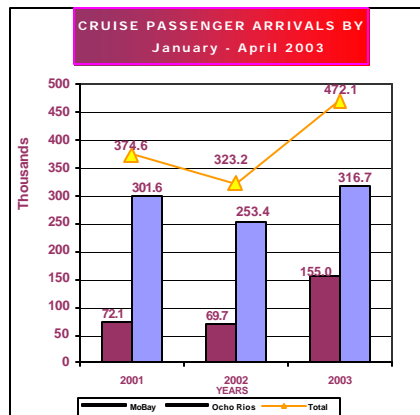
Of the other countries, Australia with a total of **531** stopovers in January to April period recorded an increase of **21%** against the **440** who came in January to April 2002.

Market Share

The market share of stopover visitors for the January to April period were as follows:

USA **71.4%**; Canada **9.2%**; UK **9.5%**; Continental Europe **5.4%** the Caribbean **2.9%**; Latin America **0.8%**; Japan **0.3%** and Other Countries **0.5%**.

Cruise Passengers



A total of **108,009** cruise passengers visited Jamaica in April 2003. This represents a **43%** increase against the **75,442** recorded for April 2002. Cumulatively, a total of **472,052** cruise passengers visited Jamaica in the January to April period, a **46%** increase against the **323,187** recorded for the corresponding period in 2002.

A total of **74,408** cruise passengers visited the port of Ocho Rios in April, an increase of **10%** over

the **67,719** recorded for April 2002. Montego Bay recorded a total of **33,601** cruise passengers for the month, an increase of some **335%** against the **7,723** recorded for 2002.

For the January to April period cruise passenger arrivals to the port of Ocho Rios was **316,737** an increase of **25%** against the **253,405** for the corresponding period in 2002. In the case of Montego Bay, cruise passenger arrivals was **154,992** an increase of **122%** against the **69,710** recorded for the same period in 2002.

Length of Stay

The average length of stay of stopovers in April was **8.9** nights against **9.3** for April 2002. The average length of stay in hotels was **6.2** nights the same as in April 2002. Cumulatively, the average length of stay for the January to April period was **9.0** nights compared to **9.2** nights recorded for the similar period in 2002.

First and Repeat Visitors

Approximately **55%** or **57,325** of the **104,497** foreign nationals who visited Jamaica in April were first-time visitors and the other **45%** or **47,172** were repeat guests.

Cumulatively, in the January to April period, some **56%** of the **431,055** Foreign Nationals who visited the island were first-time guests and **44%** were repeat guests.

TABLE 1

TOURIST ARRIVALS
January - April
2003

| Month | <----- Stopovers -----> | | | | | | Total Stopover Arrivals | +/- 2003/02 | +/- 2003/01 |
|------------------|-------------------------|----------------|----------------|---------------------------|----------------|----------------|-------------------------------|----------------|----------------|
| | Foreign Nationals | +/- 2003/02 | +/- 2003/01 | Non-Resident Jamaicans | +/- 2003/02 | +/- 2003/01 | | | |
| January | 95,875 | 12.6% | -0.9% | 5,431 | 9.0% | 5.2% | 101,306 | 12.4% | -0.6% |
| February | 106,440 | 11.7% | -1.0% | 5,018 | 6.0% | -14.3% | 111,458 | 11.4% | -1.7% |
| March | 124,143 | 0.4% | -8.9% | 5,342 | -18.1% | -23.1% | 129,485 | -0.5% | -9.6% |
| April | 104,597 | 11.0% | -10.9% | 7,377 | 14.6% | -10.3% | 111,974 | 11.2% | -10.9% |
| Jan.-Apr. | 431,055 | 8.2% | -5.9% | 23,168 | 2.2% | -11.5% | 454,223 | 7.9% | -6.2% |

STOPOVER ARRIVALS FOREIGN NATIONALS

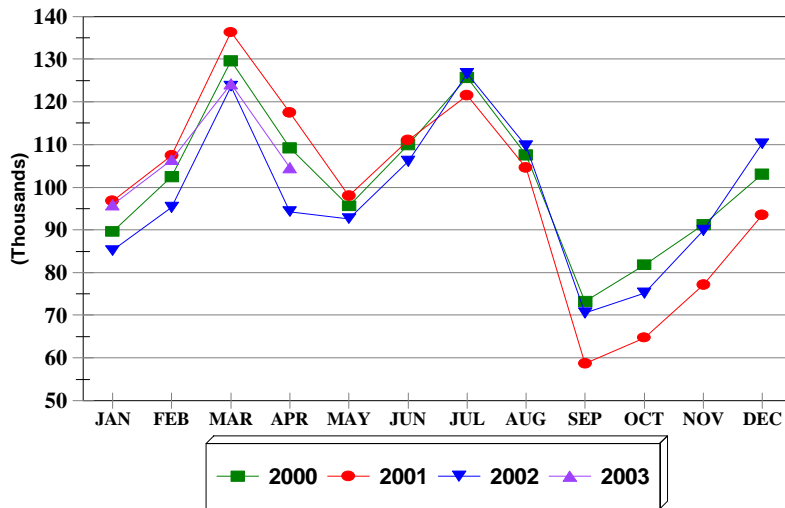


FIG. 1

STOPOVER ARRIVALS NON-RESIDENT JAMAICANS

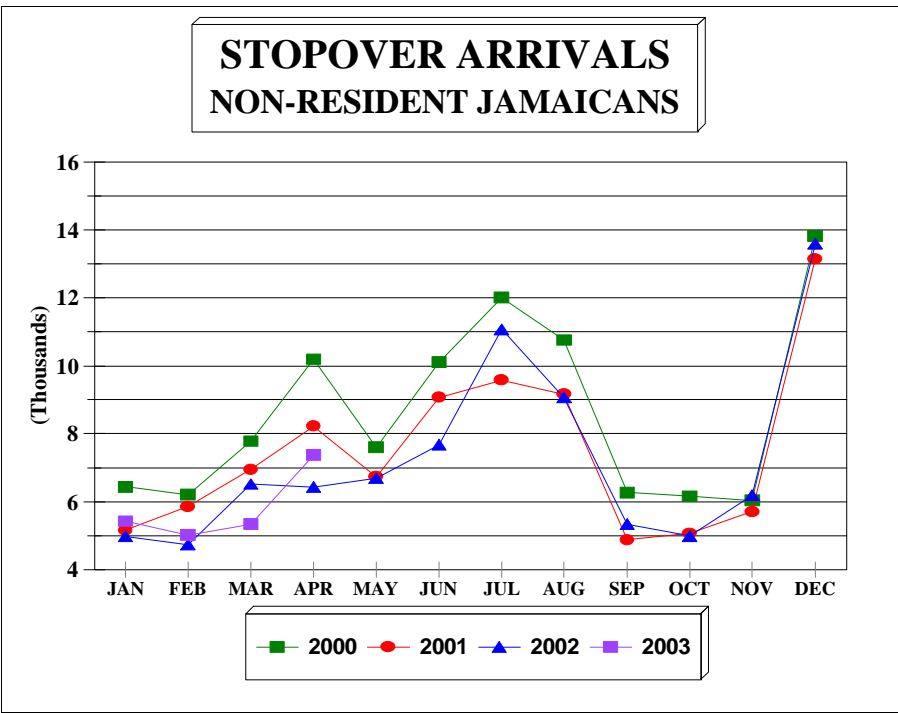


FIG. 1a

TABLE 1.1

First & Repeat Visit to Jamaica

FOREIGN NATIONALS

2003

| | Arrivals | | | | TOTAL | % SHARE | |
|-----------|-------------|-------|--------------|------|---------|-------------|--------------|
| | First Visit | +/- | Repeat Visit | +/- | | First Visit | Repeat Visit |
| Jan. | 51,389 | -4.1 | 44,486 | 3.2 | 95,875 | 53.6 | 46.4 |
| Feb. | 56,644 | -4.7 | 49,796 | 3.6 | 106,440 | 53.2 | 46.8 |
| Mar. | 74,063 | -14.3 | 50,080 | 0.4 | 124,143 | 59.7 | 40.3 |
| Apr. | 57,325 | -15.0 | 47,272 | -5.4 | 104,597 | 54.8 | 45.2 |
| Jan.-Apr. | 239,421 | -10.3 | 191,634 | 0.3 | 431,055 | 55.5 | 44.5 |

TABLE 1.2
STOPOVER ARRIVALS BY MARKET REGION
AND MONTH OF ARRIVAL 2003

| | U.S.A. | | | | Canada | U.K. Europe | Latin America | Caribbean | Asia | Other Countries | Total |
|------------------|----------------|---------------|---------------|---------------|---------------|----------------|------------------|---------------|--------------|--------------------|----------------|
| | Northeast | Mid-West | South | West | | | | | | | |
| January | 28,497 | 21,351 | 14,638 | 4,110 | 11,589 | 16,286 | 1,087 | 2,821 | 635 | 292 | 101,306 |
| February | 35,006 | 25,007 | 14,940 | 4,002 | 11,506 | 16,812 | 777 | 2,594 | 578 | 236 | 111,458 |
| March | 40,262 | 29,316 | 21,505 | 5,449 | 10,779 | 17,088 | 892 | 3,197 | 695 | 302 | 129,485 |
| April | 37,597 | 17,405 | 19,687 | 5,514 | 7,937 | 17,523 | 1,041 | 4,324 | 532 | 414 | 111,974 |
| Jan.-Apr. | 141,362 | 93,079 | 70,770 | 19,075 | 41,811 | 67,709 | 3,797 | 12,936 | 2,440 | 1,244 | 454,223 |
| +/- % | 7.2% | 9.1% | 0.3% | -0.5% | -1.1% | 26.3% | 6.5% | 15.4% | 12.5% | -7.2% | 7.9% |

TABLE 2

TOTAL STOPOVER ARRIVALS BY PERMANENT RESIDENCE

| | APRIL | | | % Change | | | JANUARY - APRIL | | | % Change | | | | |
|-----------------------------|--------|--------|--------|----------|---------|---------|-----------------|---------|---------|----------|---------|---------|---------|---------|
| | 2000 | 2001 | 2002 | 2003 | 2003/02 | 2003/01 | 2003/00 | 2000 | 2001 | 2002 | 2003 | 2003/02 | 2003/01 | 2003/00 |
| U.S.A. | | | | | | | | | | | | | | |
| NORTHEAST (NEW YORK) | | | | | | | | | | | | | | |
| Connecticut | 2,055 | 2,743 | 2,577 | 2,179 | -15.4 | -20.6 | 6.0 | 8,434 | 9,441 | 8,099 | 8,608 | 6.3 | -8.8 | 2.1 |
| Delaware | 559 | 618 | 386 | 491 | 27.2 | -20.6 | -12.2 | 1,780 | 2,120 | 1,537 | 1,773 | 15.4 | -16.4 | -0.4 |
| Maine | 320 | 436 | 415 | 297 | -28.4 | -31.9 | -7.2 | 1,303 | 1,473 | 1,216 | 1,182 | -2.8 | -19.8 | -9.3 |
| Maryland | 2,831 | 3,393 | 2,576 | 3,069 | 19.1 | -9.5 | 8.4 | 9,917 | 11,435 | 10,312 | 11,069 | 7.3 | -3.2 | 11.6 |
| Massachusetts | 3,448 | 3,747 | 3,019 | 2,755 | -8.7 | -26.5 | -20.1 | 12,896 | 15,417 | 12,196 | 12,524 | 2.7 | -18.8 | -2.9 |
| New Hampshire | 611 | 832 | 621 | 528 | -15.0 | -36.5 | -13.6 | 2,171 | 2,809 | 2,091 | 2,094 | 0.1 | -25.5 | -3.5 |
| New Jersey | 5,337 | 6,028 | 4,621 | 5,791 | 25.3 | -3.9 | 8.5 | 18,383 | 20,870 | 18,357 | 20,617 | 12.3 | -1.2 | 12.2 |
| New York | 16,934 | 17,941 | 11,992 | 15,367 | 28.1 | -14.3 | -9.3 | 55,466 | 59,049 | 49,913 | 52,586 | 5.4 | -10.9 | -5.2 |
| Pennsylvania | 3,928 | 4,542 | 3,855 | 4,181 | 8.5 | -7.9 | 6.4 | 16,347 | 19,364 | 17,396 | 19,423 | 11.7 | 0.3 | 18.8 |
| Rhode Island | 322 | 288 | 370 | 284 | -23.2 | -1.4 | -11.8 | 1,364 | 1,503 | 1,294 | 1,441 | 11.4 | -4.1 | 5.6 |
| Vermont | 249 | 357 | 197 | 230 | 16.8 | -35.6 | -7.6 | 920 | 1,063 | 714 | 807 | 13.0 | -24.1 | -12.3 |
| Virginia | 1,978 | 2,227 | 1,615 | 1,885 | 16.7 | -15.4 | -4.7 | 6,922 | 7,625 | 6,632 | 7,026 | 5.9 | -7.9 | 1.5 |
| Washington D.C. | 334 | 530 | 364 | 401 | 10.2 | -24.3 | 20.1 | 1,573 | 1,837 | 1,502 | 1,634 | 8.8 | -11.1 | 3.9 |
| West Virginia | 138 | 150 | 105 | 139 | 32.4 | -7.3 | 0.7 | 623 | 741 | 563 | 578 | 2.7 | -22.0 | -7.2 |
| Total | 39,044 | 43,832 | 32,713 | 37,597 | 14.9 | -14.2 | -3.7 | 138,099 | 154,747 | 131,822 | 141,362 | 7.2 | -8.6 | 2.4 |
| MIDWEST (CHICAGO) | | | | | | | | | | | | | | |
| Illinois | 5,151 | 5,009 | 4,399 | 4,384 | -0.3 | -12.5 | -14.9 | 22,283 | 21,476 | 19,438 | 21,331 | 9.7 | -0.7 | -4.3 |
| Indiana | 1,189 | 1,074 | 1,000 | 1,020 | 2.0 | -5.0 | -14.2 | 5,487 | 5,123 | 5,003 | 5,429 | 8.5 | 6.0 | -1.1 |
| Iowa | 357 | 409 | 408 | 358 | -12.3 | -12.5 | 0.3 | 3,084 | 3,653 | 3,615 | 3,969 | 9.8 | 8.7 | 28.7 |
| Kansas | 281 | 296 | 233 | 258 | 10.7 | -12.8 | -8.2 | 1,949 | 2,022 | 1,300 | 1,499 | 15.3 | -25.9 | -23.1 |
| Kentucky | 434 | 514 | 362 | 559 | 54.4 | 8.8 | 28.8 | 1,777 | 2,108 | 1,944 | 1,969 | 1.3 | -6.6 | 10.8 |
| Michigan | 3,625 | 4,177 | 2,272 | 3,160 | 39.1 | -24.3 | -12.8 | 14,105 | 15,975 | 12,199 | 13,809 | 13.2 | -13.6 | -2.1 |
| Minnesota | 1,712 | 1,889 | 1,155 | 1,761 | 52.5 | -6.8 | 2.9 | 12,729 | 12,634 | 10,967 | 12,519 | 14.2 | -0.9 | -1.6 |
| Missouri | 1,105 | 1,588 | 1,188 | 1,374 | 15.7 | -13.5 | 24.3 | 5,895 | 6,651 | 5,903 | 6,831 | 15.7 | 2.7 | 15.9 |
| Nebraska | 249 | 394 | 310 | 231 | -25.5 | -41.4 | -7.2 | 1,464 | 2,023 | 1,362 | 1,717 | 26.1 | -15.1 | 17.3 |
| North Dakota | 57 | 65 | 47 | 70 | 48.9 | 7.7 | 22.8 | 607 | 611 | 559 | 635 | 13.6 | 3.9 | 4.6 |
| Ohio | 1,887 | 1,953 | 1,995 | 1,642 | -17.7 | -15.9 | -13.0 | 8,205 | 8,413 | 8,145 | 7,186 | -11.8 | -14.6 | -12.4 |
| South Dakota | 68 | 76 | 77 | 67 | -13.0 | -11.8 | -1.5 | 626 | 706 | 576 | 943 | 63.7 | 33.6 | 50.6 |
| Wisconsin | 3,062 | 3,222 | 2,059 | 2,521 | 22.4 | -21.8 | -17.7 | 16,275 | 16,582 | 14,274 | 15,242 | 6.8 | -8.1 | -6.3 |
| Total | 19,177 | 20,666 | 15,505 | 17,405 | 12.3 | -15.8 | -9.2 | 94,486 | 97,977 | 85,285 | 93,079 | 9.1 | -5.0 | -1.5 |

TABLE 2

TOTAL STOPOVER ARRIVALS BY PERMANENT RESIDENCE

| | APRIL | | | | % Change | | | JANUARY - APRIL | | | | % Change | | |
|---------------------------|---------------|---------------|---------------|---------------|------------|--------------|-------------|-----------------|----------------|----------------|----------------|------------|-------------|------------|
| | 2000 | 2001 | 2002 | 2003 | 2003/02 | 2003/01 | 2003/00 | 2000 | 2001 | 2002 | 2003 | 2003/02 | 2003/01 | 2003/00 |
| SOUTH (MIAMI) | | | | | | | | | | | | | | |
| Alabama | 446 | 425 | 400 | 385 | -3.7 | -9.4 | -13.7 | 2,068 | 2,188 | 1,815 | 2,020 | 11.3 | -7.7 | -2.3 |
| Arkansas | 204 | 130 | 168 | 163 | -3.0 | 25.4 | -20.1 | 808 | 682 | 722 | 824 | 14.1 | 20.8 | 2.0 |
| Florida | 11,271 | 10,873 | 9,565 | 9,690 | 1.3 | -10.9 | -14.0 | 34,961 | 35,001 | 33,126 | 32,843 | -0.9 | -6.2 | -6.1 |
| Georgia | 3,945 | 3,768 | 4,185 | 3,904 | -6.7 | 3.6 | -1.0 | 11,078 | 12,193 | 11,937 | 11,890 | -0.4 | -2.5 | 7.3 |
| Louisiana | 388 | 525 | 432 | 411 | -4.9 | -21.7 | 5.9 | 1,263 | 1,515 | 1,414 | 1,384 | -2.1 | -8.6 | 9.6 |
| Mississippi | 201 | 191 | 220 | 162 | -26.4 | -15.2 | -19.4 | 744 | 708 | 787 | 721 | -8.4 | 1.8 | -3.1 |
| North Carolina | 1,383 | 1,533 | 1,288 | 1,317 | 2.3 | -14.1 | -4.8 | 5,206 | 5,611 | 5,262 | 5,534 | 5.2 | -1.4 | 6.3 |
| Oklahoma | 237 | 173 | 195 | 173 | -11.3 | 0.0 | -27.0 | 1,094 | 953 | 856 | 840 | -1.9 | -11.9 | -23.2 |
| Puerto Rico | 147 | 135 | 147 | 97 | -34.0 | -28.1 | -34.0 | 566 | 518 | 561 | 402 | -28.3 | -22.4 | -29.0 |
| South Carolina | 599 | 846 | 663 | 676 | 2.0 | -20.1 | 12.9 | 2,116 | 2,587 | 2,119 | 2,351 | 10.9 | -9.1 | 11.1 |
| Tennessee | 984 | 913 | 870 | 852 | -2.1 | -6.7 | -13.4 | 3,363 | 3,500 | 3,605 | 3,916 | 8.6 | 11.9 | 16.4 |
| Texas | 2,317 | 1,646 | 2,133 | 1,857 | -12.9 | 12.8 | -19.9 | 8,096 | 6,646 | 8,352 | 8,045 | -3.7 | 21.1 | -0.6 |
| Total | 22,122 | 21,158 | 20,266 | 19,687 | -2.9 | -7.0 | -11.0 | 71,363 | 72,102 | 70,556 | 70,770 | 0.3 | -1.8 | -0.8 |
| WEST (LOS ANGELES) | | | | | | | | | | | | | | |
| Alaska | 14 | 28 | 21 | 18 | -14.3 | -35.7 | 28.6 | 120 | 133 | 109 | 133 | 22.0 | 0.0 | 10.8 |
| Arizona | 337 | 503 | 397 | 297 | -25.2 | -41.0 | -11.9 | 1,197 | 2,276 | 1,440 | 1,262 | -12.4 | -44.6 | 5.4 |
| California | 3,727 | 4,047 | 3,187 | 3,366 | 5.6 | -16.8 | -9.7 | 10,432 | 12,010 | 10,660 | 10,423 | -2.2 | -13.2 | -0.1 |
| Colorado | 545 | 617 | 548 | 557 | 1.6 | -9.7 | 2.2 | 2,431 | 2,837 | 2,644 | 2,262 | -14.4 | -20.3 | -7.0 |
| Hawaii | 20 | 22 | 17 | 11 | -35.3 | -50.0 | -45.0 | 71 | 69 | 51 | 84 | 64.7 | 21.7 | 18.3 |
| Idaho | 89 | 92 | 83 | 67 | -19.3 | -27.2 | -24.7 | 461 | 562 | 375 | 472 | 25.9 | -16.0 | 2.4 |
| Montana | 42 | 65 | 62 | 170 | 174.2 | 161.5 | 304.8 | 240 | 316 | 317 | 441 | 39.1 | 39.6 | 83.7 |
| Nevada | 167 | 196 | 143 | 203 | 42.0 | 3.6 | 21.6 | 568 | 600 | 563 | 739 | 31.3 | 23.2 | 30.1 |
| New Mexico | 93 | 139 | 101 | 68 | -32.7 | -51.1 | -26.9 | 338 | 472 | 315 | 277 | -12.1 | -41.3 | -18.0 |
| Oregon | 228 | 183 | 140 | 159 | 13.6 | -13.1 | -30.3 | 836 | 784 | 743 | 780 | 5.0 | -0.5 | -6.7 |
| Utah | 89 | 82 | 116 | 134 | 15.5 | 63.4 | 50.6 | 384 | 356 | 429 | 581 | 35.4 | 63.2 | 51.3 |
| Washington | 466 | 479 | 405 | 437 | 7.9 | -8.8 | -6.2 | 1,608 | 1,697 | 1,393 | 1,461 | 4.9 | -13.9 | -9.1 |
| Wyoming | 36 | 47 | 57 | 27 | -52.6 | -42.6 | -25.0 | 148 | 160 | 141 | 160 | 13.5 | 0.0 | 8.1 |
| Total | 5,853 | 6,500 | 5,277 | 5,514 | 4.5 | -15.2 | -5.8 | 18,834 | 22,272 | 19,180 | 19,075 | -0.5 | -14.4 | 1.3 |
| TOTAL U.S.A. | 86,196 | 92,156 | 73,761 | 80,203 | 8.7 | -13.0 | -7.0 | 322,782 | 347,098 | 306,843 | 324,286 | 5.7 | -6.6 | 0.5 |

TABLE 2

TOTAL STOPOVER ARRIVALS BY PERMANENT RESIDENCE

| | APRIL | | | | | | | JANUARY - APRIL | | | | | | |
|----------------------------|---------------|---------------|---------------|---------------|-------------|--------------|--------------|-----------------|---------------|---------------|---------------|-------------|--------------|--------------|
| | 2000 | 2001 | 2002 | 2003 | % Change | | | 2000 | 2001 | 2002 | 2003 | % Change | | |
| | | | | | 2003/02 | 2003/01 | 2003/00 | | | | | 2003/02 | 2003/01 | 2003/00 |
| CANADA (TORONTO) | | | | | | | | | | | | | | |
| Alberta | 503 | 429 | 446 | 326 | -26.9 | -24.0 | -35.2 | 1,948 | 2,177 | 1,720 | 1,850 | 7.6 | -15.0 | -5.0 |
| British Columbia | 328 | 274 | 255 | 235 | -7.8 | -14.2 | -28.4 | 1,387 | 1,470 | 1,128 | 1,152 | 2.1 | -21.6 | -16.9 |
| Manitoba | 164 | 163 | 132 | 61 | -53.8 | -62.6 | -62.8 | 1,737 | 1,854 | 900 | 1,925 | 113.9 | 3.8 | 10.8 |
| New Brunswick | 221 | 207 | 182 | 132 | -27.5 | -36.2 | -40.3 | 858 | 861 | 606 | 594 | -2.0 | -31.0 | -30.8 |
| Newfoundland | 111 | 122 | 58 | 64 | 10.3 | -47.5 | -42.3 | 256 | 253 | 247 | 251 | 1.6 | -0.8 | -2.0 |
| Nova Scotia | 454 | 425 | 177 | 298 | 68.4 | -29.9 | -34.4 | 1,364 | 1,506 | 688 | 974 | 41.6 | -35.3 | -28.6 |
| Ontario | 7,199 | 7,421 | 6,326 | 6,017 | -4.9 | -18.9 | -16.4 | 32,777 | 36,074 | 30,520 | 28,634 | -6.2 | -20.6 | -12.6 |
| P.E. Island | 33 | 11 | 16 | 15 | -6.3 | 36.4 | -54.5 | 92 | 93 | 86 | 105 | 22.1 | 12.9 | 14.1 |
| Quebec | 1,007 | 1,303 | 815 | 692 | -15.1 | -46.9 | -31.3 | 5,508 | 7,586 | 5,793 | 5,477 | -5.5 | -27.8 | -0.6 |
| Saskatchewan | 97 | 79 | 74 | 80 | 8.1 | 1.3 | -17.5 | 579 | 775 | 444 | 758 | 70.7 | -2.2 | 30.9 |
| Other Canada | 41 | 41 | 20 | 17 | -15.0 | -58.5 | -58.5 | 135 | 205 | 131 | 91 | -30.5 | -55.6 | -32.6 |
| Total | 10,158 | 10,475 | 8,501 | 7,937 | -6.6 | -24.2 | -21.9 | 46,641 | 52,854 | 42,263 | 41,811 | -1.1 | -20.9 | -10.4 |
| LONDON OFFICE | | | | | | | | | | | | | | |
| Northern Europe | | | | | | | | | | | | | | |
| U.K. | 10,896 | 10,554 | 9,364 | 11,456 | 22.3 | 8.5 | 5.1 | 42,426 | 39,488 | 37,572 | 42,979 | 14.4 | 8.8 | 1.3 |
| Denmark | 50 | 87 | 42 | 31 | -26.2 | -64.4 | -38.0 | 534 | 317 | 199 | 148 | -25.6 | -53.3 | -72.3 |
| Finland | 33 | 42 | 19 | 42 | 121.1 | 0.0 | 27.3 | 157 | 162 | 140 | 258 | 84.3 | 59.3 | 64.3 |
| Norway | 93 | 97 | 71 | 57 | -19.7 | -41.2 | -38.7 | 392 | 341 | 315 | 330 | 4.8 | -3.2 | -15.8 |
| Sweden | 165 | 103 | 89 | 113 | 27.0 | 9.7 | -31.5 | 606 | 622 | 474 | 393 | -17.1 | -36.8 | -35.1 |
| Southern Europe | | | | | | | | | | | | | | |
| Greece | 4 | 14 | 8 | 8 | 0.0 | -42.9 | 100.0 | 275 | 85 | 63 | 113 | 79.4 | 32.9 | -58.9 |
| Italy | 1,274 | 951 | 981 | 2,781 | 183.5 | 192.4 | 118.3 | 6,528 | 5,444 | 4,520 | 11,076 | 145.0 | 103.5 | 69.7 |
| Portugal | 30 | 41 | 100 | 43 | -57.0 | 4.9 | 43.3 | 133 | 105 | 152 | 161 | 5.9 | 53.3 | 21.1 |
| Spain | 72 | 190 | 335 | 266 | -20.6 | 40.0 | 269.4 | 326 | 604 | 682 | 592 | -13.2 | -2.0 | 81.6 |
| Western Europe | | | | | | | | | | | | | | |
| Austria | 169 | 191 | 123 | 153 | 24.4 | -19.9 | -9.5 | 1,160 | 999 | 693 | 770 | 11.1 | -22.9 | -33.6 |
| Belgium | 81 | 125 | 87 | 187 | 114.9 | 49.6 | 130.9 | 379 | 417 | 389 | 483 | 24.2 | 15.8 | 27.4 |
| France | 366 | 345 | 334 | 270 | -19.2 | -21.7 | -26.2 | 1,857 | 1,150 | 1,048 | 989 | -5.6 | -14.0 | -46.7 |
| Germany | 2,096 | 2,010 | 972 | 1,269 | 30.6 | -36.9 | -39.5 | 10,412 | 8,258 | 4,780 | 6,002 | 25.6 | -27.3 | -42.4 |
| Luxemburg | 17 | 12 | 4 | 8 | 100.0 | -33.3 | -52.9 | 42 | 36 | 19 | 26 | 36.8 | -27.8 | -38.1 |
| Netherlands | 268 | 236 | 160 | 265 | 65.6 | 12.3 | -1.1 | 1,351 | 859 | 631 | 1,069 | 69.4 | 24.4 | -20.9 |
| Switzerland | 441 | 318 | 176 | 253 | 43.8 | -20.4 | -42.6 | 1,505 | 1,016 | 646 | 814 | 26.0 | -19.9 | -45.9 |
| Central/East Europe | | | | | | | | | | | | | | |
| Czechoslovakia | 7 | 22 | 29 | 21 | -27.6 | -4.5 | 200.0 | 75 | 141 | 111 | 163 | 46.8 | 15.6 | 117.3 |
| Hungary | 2 | 14 | 20 | 20 | 0.0 | 42.9 | 900.0 | 98 | 81 | 93 | 71 | -23.7 | -12.3 | -27.6 |
| Poland | 86 | 32 | 99 | 41 | -58.6 | 28.1 | -52.3 | 346 | 183 | 250 | 303 | 21.2 | 65.6 | -12.4 |
| Russia | 86 | 90 | 110 | 154 | 40.0 | 71.1 | 79.1 | 356 | 410 | 496 | 507 | 2.2 | 23.7 | 42.4 |
| Other Europe | 58 | 61 | 83 | 85 | 2.4 | 39.3 | 46.6 | 357 | 362 | 331 | 462 | 39.6 | 27.6 | 29.4 |
| Total | 16,294 | 15,535 | 13,206 | 17,523 | 32.7 | 12.8 | 7.5 | 69,315 | 61,080 | 53,604 | 67,709 | 26.3 | 10.9 | -2.3 |

TABLE 2

TOTAL STOPOVER ARRIVALS BY PERMANENT RESIDENCE

| | APRIL | | | | | | | JANUARY - APRIL | | | | | | |
|------------------------|-------|-------|-------|-------|----------|---------|---------|-----------------|-------|-------|-------|----------|---------|---------|
| | 2000 | 2001 | 2002 | 2003 | % Change | | | 2000 | 2001 | 2002 | 2003 | % Change | | |
| | | | | | 2003/02 | 2003/01 | 2003/00 | | | | | 2003/02 | 2003/01 | 2003/00 |
| LATIN AMERICA | | | | | | | | | | | | | | |
| CENTRAL AMERICA | | | | | | | | | | | | | | |
| Mexico | 187 | 298 | 185 | 191 | 3.2 | -35.9 | 2.1 | 697 | 857 | 598 | 592 | -1.0 | -30.9 | -15.1 |
| Belize | 31 | 35 | 51 | 135 | 164.7 | 285.7 | 335.5 | 145 | 145 | 164 | 447 | 172.6 | 208.3 | 208.3 |
| Costa Rica | 51 | 50 | 51 | 36 | -29.4 | -28.0 | -29.4 | 191 | 216 | 241 | 171 | -29.0 | -20.8 | -10.5 |
| El Salvador | 9 | 13 | 18 | 26 | 44.4 | 100.0 | 188.9 | 28 | 44 | 77 | 52 | -32.5 | 18.2 | 85.7 |
| Guatemala | 27 | 27 | 36 | 20 | -44.4 | -25.9 | -25.9 | 94 | 103 | 129 | 103 | -20.2 | 0.0 | 9.6 |
| Honduras | 18 | 56 | 14 | 12 | -14.3 | -78.6 | -33.3 | 55 | 86 | 47 | 56 | 19.1 | -34.9 | 1.8 |
| Nicaragua | 3 | 2 | 4 | 1 | -75.0 | -50.0 | -66.7 | 23 | 15 | 26 | 11 | -57.7 | -26.7 | -52.2 |
| Panama | 69 | 110 | 87 | 91 | 4.6 | -17.3 | 31.9 | 481 | 456 | 335 | 363 | 8.4 | -20.4 | -24.5 |
| Total | 395 | 591 | 446 | 512 | 14.8 | -13.4 | 29.6 | 1,714 | 1,922 | 1,617 | 1,795 | 11.0 | -6.6 | 4.7 |
| SOUTH AMERICA | | | | | | | | | | | | | | |
| Argentina | 69 | 161 | 37 | 33 | -10.8 | -79.5 | -52.2 | 522 | 623 | 174 | 195 | 12.1 | -68.7 | -62.6 |
| Bolivia | 6 | 4 | 3 | 3 | 0.0 | -25.0 | -50.0 | 22 | 25 | 19 | 22 | 15.8 | -12.0 | 0.0 |
| Brazil | 79 | 136 | 81 | 43 | -46.9 | -68.4 | -45.6 | 372 | 372 | 325 | 245 | -24.6 | -34.1 | -34.1 |
| Chile | 45 | 52 | 116 | 19 | -83.6 | -63.5 | -57.8 | 314 | 266 | 272 | 130 | -52.2 | -51.1 | -58.6 |
| Colombia | 159 | 153 | 49 | 149 | 204.1 | -2.6 | -6.3 | 564 | 546 | 200 | 394 | 97.0 | -27.8 | -30.1 |
| Ecuador | 23 | 24 | 24 | 6 | -75.0 | -75.0 | -73.9 | 57 | 83 | 64 | 14 | -78.1 | -83.1 | -75.4 |
| Guyana | 150 | 155 | 135 | 132 | -2.2 | -14.8 | -12.0 | 516 | 512 | 405 | 522 | 28.9 | 2.0 | 1.2 |
| Paraguay | 2 | 0 | 2 | 2 | 0.0 | - | 0.0 | 12 | 7 | 9 | 7 | -22.2 | 0.0 | -41.7 |
| Peru | 42 | 32 | 31 | 52 | 67.7 | 62.5 | 23.8 | 107 | 101 | 106 | 123 | 16.0 | 21.8 | 15.0 |
| Surinam | 14 | 9 | 11 | 37 | 236.4 | 311.1 | 164.3 | 61 | 114 | 44 | 104 | 136.4 | -8.8 | 70.5 |
| Uruguay | 15 | 10 | 8 | 4 | -50.0 | -60.0 | -73.3 | 45 | 39 | 31 | 20 | -35.5 | -48.7 | -55.6 |
| Venezuela | 206 | 177 | 74 | 46 | -37.8 | -74.0 | -77.7 | 419 | 574 | 298 | 222 | -25.5 | -61.3 | -47.0 |
| Other South America | 2 | 2 | 0 | 3 | - | - | - | 3 | 2 | 0 | 4 | - | 100.0 | 33.3 |
| Total | 812 | 915 | 571 | 529 | -7.4 | -42.2 | -34.9 | 3,014 | 3,264 | 1,947 | 2,002 | 2.8 | -38.7 | -33.6 |
| Total Latin America | 1,207 | 1,506 | 1,017 | 1,041 | 2.4 | -30.9 | -13.8 | 4,728 | 5,186 | 3,564 | 3,797 | 6.5 | -26.8 | -19.7 |

TABLE 2

TOTAL STOPOVER ARRIVALS BY PERMANENT RESIDENCE

| | APRIL | | | | | | | JANUARY - APRIL | | | | | | |
|--------------------------|----------------|----------------|----------------|----------------|-------------|--------------|--------------|-----------------|----------------|----------------|----------------|-------------|--------------|--------------|
| | 2000 | 2001 | 2002 | 2003 | % Change | | | 2000 | 2001 | 2002 | 2003 | % Change | | |
| | | | | | 2003/02 | 2003/01 | 2003/00 | | | | | 2003/02 | 2003/01 | 2003/00 |
| CARIBBEAN | | | | | | | | | | | | | | |
| Antigua | 140 | 181 | 96 | 154 | 60.4 | -14.9 | 10.0 | 501 | 435 | 387 | 441 | 14.0 | 1.4 | -12.0 |
| Bahamas | 733 | 689 | 307 | 266 | -13.4 | -61.4 | -63.7 | 2,026 | 1,952 | 1,160 | 823 | -29.1 | -57.8 | -59.4 |
| Barbados | 654 | 378 | 344 | 502 | 45.9 | 32.8 | -23.2 | 1,664 | 1,284 | 1,376 | 1,613 | 17.2 | 25.6 | -3.1 |
| Bermuda | 180 | 177 | 139 | 231 | 66.2 | 30.5 | 28.3 | 620 | 522 | 531 | 791 | 49.0 | 51.5 | 27.6 |
| British Virgin Is. | 48 | 39 | 27 | 43 | 59.3 | 10.3 | -10.4 | 116 | 129 | 107 | 133 | 24.3 | 3.1 | 14.7 |
| Cayman Is. | 1,253 | 1,472 | 928 | 1,221 | 31.6 | -17.1 | -2.6 | 3,542 | 3,891 | 3,094 | 3,589 | 16.0 | -7.8 | 1.3 |
| Dominica | 20 | 35 | 26 | 38 | 46.2 | 8.6 | 90.0 | 96 | 134 | 72 | 109 | 51.4 | -18.7 | 13.5 |
| Grenada | 41 | 68 | 33 | 57 | 72.7 | -16.2 | 39.0 | 191 | 174 | 153 | 179 | 17.0 | 2.9 | -6.3 |
| Monsterrat | 11 | 10 | 3 | 16 | 433.3 | 60.0 | 45.5 | 39 | 32 | 17 | 36 | 111.8 | 12.5 | -7.7 |
| St. Kitts/Nevis/Anguilla | 53 | 75 | 56 | 66 | 17.9 | -12.0 | 24.5 | 232 | 191 | 165 | 209 | 26.7 | 9.4 | -9.9 |
| St. Lucia | 107 | 192 | 108 | 153 | 41.7 | -20.3 | 43.0 | 462 | 430 | 361 | 555 | 53.7 | 29.1 | 20.1 |
| St. Vincent | 27 | 52 | 50 | 41 | -18.0 | -21.2 | 51.9 | 137 | 151 | 157 | 146 | -7.0 | -3.3 | 6.6 |
| Turks & Caicos Is. | 59 | 166 | 78 | 122 | 56.4 | -26.5 | 106.8 | 128 | 300 | 230 | 281 | 22.2 | -6.3 | 119.5 |
| Trinidad & Tobago | 607 | 699 | 592 | 771 | 30.2 | 10.3 | 27.0 | 1,915 | 2,228 | 2,076 | 2,267 | 9.2 | 1.8 | 18.4 |
| Comm. Caribbean | 3,933 | 4,233 | 2,787 | 3,681 | 32.1 | -13.0 | -6.4 | 11,669 | 11,853 | 9,886 | 11,172 | 13.0 | -5.7 | -4.3 |
| Aruba | 22 | 18 | 22 | 75 | 240.9 | 316.7 | 240.9 | 68 | 69 | 99 | 182 | 83.8 | 163.8 | 167.6 |
| Bonaire | 0 | 0 | 0 | 8 | - | - | - | 0 | 0 | 0 | 8 | - | - | - |
| Cuba | 133 | 62 | 37 | 45 | 21.6 | -27.4 | -66.2 | 497 | 233 | 210 | 206 | -1.9 | -11.6 | -58.6 |
| Curacao | 78 | 37 | 95 | 276 | 190.5 | 645.9 | 253.8 | 187 | 134 | 249 | 521 | 109.2 | 288.8 | 178.6 |
| Dominican Republic | 50 | 72 | 115 | 77 | -33.0 | 6.9 | 54.0 | 276 | 253 | 320 | 234 | -26.9 | -7.5 | -15.2 |
| Guadelope | 1 | 9 | 5 | 10 | 100.0 | 11.1 | 900.0 | 19 | 24 | 24 | 27 | 12.5 | 12.5 | 42.1 |
| Haiti | 34 | 37 | 45 | 50 | 11.1 | 35.1 | 47.1 | 144 | 134 | 196 | 260 | 32.7 | 94.0 | 80.6 |
| St. Maarten | 32 | 42 | 33 | 56 | 69.7 | 33.3 | 75.0 | 123 | 141 | 112 | 158 | 41.1 | 12.1 | 28.5 |
| All other Caribbean | 36 | 36 | 33 | 46 | 39.4 | 27.8 | 27.8 | 140 | 145 | 117 | 168 | 43.6 | 15.9 | 20.0 |
| Other Caribbean | 386 | 313 | 385 | 643 | 67.0 | 105.4 | 66.6 | 1,454 | 1,133 | 1,327 | 1,764 | 32.9 | 55.7 | 21.3 |
| TOTAL CARIBBEAN | 4,319 | 4,546 | 3,172 | 4,324 | 36.3 | -4.9 | 0.1 | 13,123 | 12,986 | 11,213 | 12,936 | 15.4 | -0.4 | -1.4 |
| OTHER COUNTRIES | | | | | | | | | | | | | | |
| African Countries | 113 | 212 | 92 | 74 | -19.6 | -65.1 | -34.5 | 446 | 463 | 258 | 240 | -7.0 | -48.2 | -46.2 |
| Isreal | 67 | 66 | 46 | 90 | 95.7 | 36.4 | 34.3 | 256 | 345 | 216 | 262 | 21.3 | -24.1 | 2.3 |
| Saudi Arabia | 0 | 1 | 3 | 3 | 0.0 | 200.0 | - | 11 | 13 | 5 | 9 | 80.0 | -30.8 | -18.2 |
| Turkey | 11 | 21 | 12 | 9 | -25.0 | -57.1 | -18.2 | 151 | 96 | 49 | 54 | 10.2 | -43.8 | -64.2 |
| Other Middle East | 24 | 38 | 32 | 19 | -40.6 | -50.0 | -20.8 | 79 | 125 | 84 | 69 | -17.9 | -44.8 | -12.7 |
| India & Pakistan | 56 | 72 | 42 | 62 | 47.6 | -13.9 | 10.7 | 222 | 260 | 172 | 164 | -4.7 | -36.9 | -26.1 |
| Japan | 735 | 624 | 479 | 311 | -35.1 | -50.2 | -57.7 | 2,683 | 2,303 | 1,569 | 1,357 | -13.5 | -41.1 | -49.4 |
| China | 23 | 69 | 36 | 20 | -44.4 | -71.0 | -13.0 | 170 | 187 | 172 | 209 | 21.5 | 11.8 | 22.9 |
| Taiwan | 5 | 8 | 12 | 5 | -58.3 | -37.5 | 0.0 | 21 | 29 | 24 | 29 | 20.8 | 0.0 | 38.1 |
| Korea | 10 | 31 | 13 | 9 | -30.8 | -71.0 | -10.0 | 75 | 109 | 75 | 62 | -17.3 | -43.1 | -17.3 |
| Philippines | 23 | 55 | 106 | 105 | -0.9 | 90.9 | 356.5 | 260 | 197 | 242 | 509 | 110.3 | 158.4 | 95.8 |
| Singapore | 2 | 16 | 10 | 3 | -70.0 | -81.3 | 50.0 | 15 | 54 | 22 | 31 | 40.9 | -42.6 | 106.7 |
| Other Asia | 12 | 46 | 21 | 17 | -19.0 | -63.0 | 41.7 | 99 | 146 | 65 | 82 | 26.2 | -43.8 | -17.2 |
| Australia | 149 | 141 | 101 | 185 | 83.2 | 31.2 | 24.2 | 485 | 510 | 440 | 531 | 20.7 | 4.1 | 9.5 |
| New Zealand | 11 | 37 | 22 | 34 | 54.5 | -8.1 | 209.1 | 68 | 100 | 96 | 73 | -24.0 | -27.0 | 7.4 |
| All Other Ctries | 4 | 6 | 5 | 0 | -100.0 | -100.0 | -100.0 | 20 | 23 | 20 | 3 | -85.0 | -87.0 | -85.0 |
| Total | 1,245 | 1,443 | 1,032 | 946 | -8.3 | -34.4 | -24.0 | 5,061 | 4,960 | 3,509 | 3,684 | 5.0 | -25.7 | -27.2 |
| GRAND TOTAL | 119,419 | 125,661 | 100,689 | 111,974 | 11.2 | -10.9 | -6.2 | 461,650 | 484,164 | 420,996 | 454,223 | 7.9 | -6.2 | -1.6 |

STOPOVER VISITORS BY MARKET SHARE

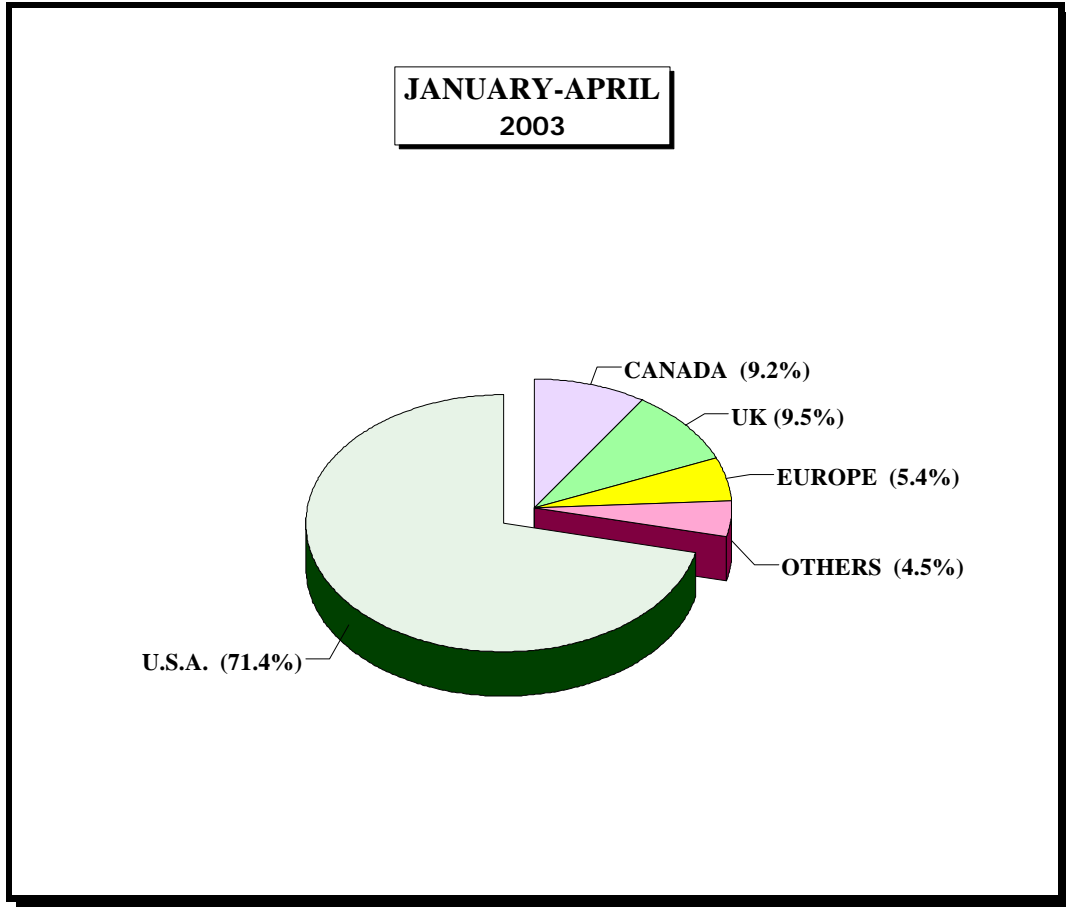


Fig. 2

| Country | April 2003 | % Share | Jan. - Apr. 2003 | % Share | Jan. - Apr. 2002 | % Share | %Change 2003/02 |
|--------------|----------------|---------------|------------------|---------------|------------------|---------------|-----------------|
| U.S.A | 80,203 | 71.6% | 324,286 | 71.4% | 306,843 | 72.9% | 5.7% |
| CANADA | 7,937 | 7.1% | 41,811 | 9.2% | 42,263 | 10.0% | -1.1% |
| U.K. | 11,456 | 10.2% | 42,979 | 9.5% | 37,572 | 8.9% | 14.4% |
| EUROPE | 6,067 | 5.4% | 24,730 | 5.4% | 16,032 | 3.8% | 54.3% |
| OTHERS | 6,311 | 5.6% | 20,417 | 4.5% | 18,286 | 4.3% | 11.7% |
| Total | 111,974 | 100.0% | 454,223 | 100.0% | 420,996 | 100.0% | 7.9% |

TABLE 3

| <u>AVERAGE LENGTH OF STAY (Nights)</u> | | | | | |
|---|---------------------------------------|------|--|--------------|------|
| <u>FOREIGN NATIONALS</u> | | | | | |
| | All Types of Accommodation | | | Hotel | |
| | 2002 | 2003 | | 2002 | 2003 |
| January | 10.4 | 10.1 | | 6.7 | 6.6 |
| February | 9.0 | 8.8 | | 6.5 | 6.3 |
| March | 8.4 | 8.5 | | 6.2 | 6.1 |
| April | 9.3 | 8.9 | | 6.2 | 6.2 |
| Jan. - Apr. | 9.2 | 9.0 | | 6.4 | 6.3 |

Note: LENGTH OF STAY IS BASED ON INTENDED LENGTH OF STAY

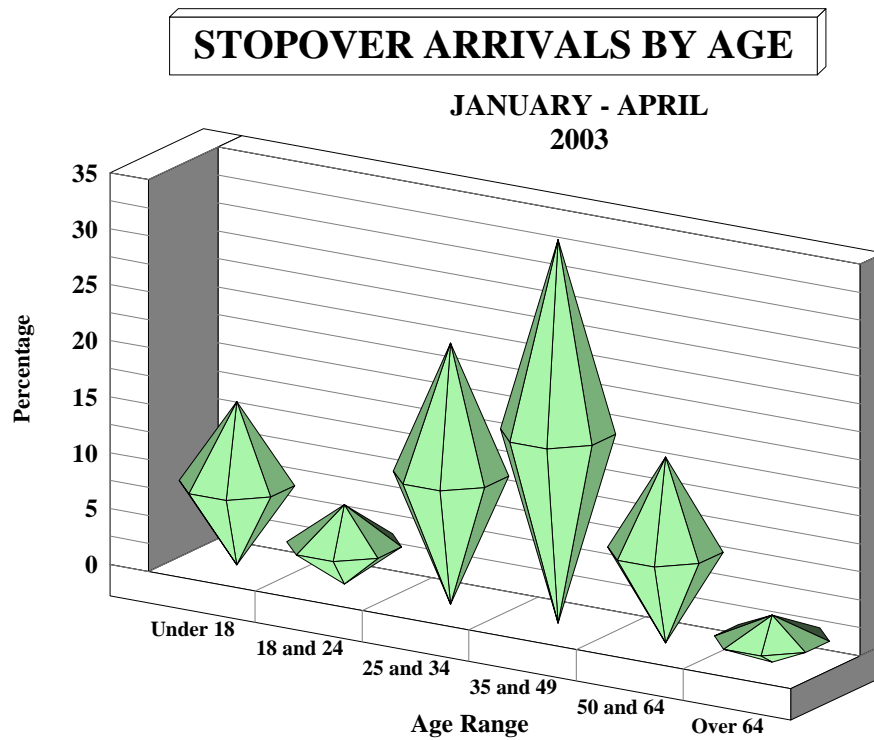


Fig. 3

AGE DISTRIBUTION OF STOPOVER ARRIVALS

| Age | APRIL | | JAN.-APR. | | JAN.-APR. | | %Change 2003/02 |
|--------------|----------------|--------------|----------------|--------------|----------------|--------------|--------------------|
| | 2003 | % Share | 2003 | % Share | 2002 | % Share | |
| Under 18 | 16,278 | 14.5 | 49,132 | 10.8 | 44,269 | 10.5 | 11.0% |
| 18 and 24 | 7,944 | 7.1 | 42,104 | 9.3 | 39,222 | 9.3 | 7.3% |
| 25 and 34 | 26,081 | 23.3 | 95,346 | 21.0 | 92,054 | 21.9 | 3.6% |
| 35 and 49 | 38,352 | 34.3 | 157,086 | 34.6 | 146,159 | 34.7 | 7.5% |
| 50 and 64 | 18,619 | 16.6 | 87,977 | 19.4 | 78,373 | 18.6 | 12.3% |
| Over 64 | 4,700 | 4.2 | 22,578 | 5.0 | 20,919 | 5.0 | 7.9% |
| Total | 111,974 | 100.0 | 454,223 | 100.0 | 420,996 | 100.0 | 7.9% |

TABLE 4

**CRUISE PASSENGER ARRIVALS BY MONTH AND PORT OF CALL
JANUARY - APRIL 2003**

| | MONTEGO BAY | | % Change 2003/02 | | OCHO RIOS | | % Change 2003/02 | | 2003 TOTAL | | 2002 TOTAL | | % Change 2003/02 | |
|-------------|-------------|----------------|---------------------|---------------|------------|----------------|---------------------|--------------|---------------|----------------|---------------|----------------|---------------------|--------------|
| | CALLS | PAX | CALLS | PAX | CALLS | PAX | CALLS | PAX | CALLS | PAX | CALLS | PAX | CALLS | PAX |
| January | 25 | 43,827 | 56.3% | 74.4% | 35 | 75,007 | 16.7% | 13.2% | 60 | 118,834 | 46 | 91,399 | 30.4% | 30.0% |
| February | 24 | 39,006 | 71.4% | 121.0% | 35 | 77,390 | 20.7% | 30.8% | 60 | 116,451 | 43 | 76,799 | 39.5% | 51.6% |
| March | 27 | 38,558 | 92.9% | 100.8% | 41 | 89,932 | 57.7% | 49.2% | 69 | 128,758 | 41 | 79,547 | 68.3% | 61.9% |
| April | 19 | 33,601 | 216.7% | 335.1% | 30 | 74,408 | -6.3% | 9.9% | 49 | 108,009 | 38 | 75,442 | 28.9% | 43.2% |
| Jan. - Apr. | 95 | 154,992 | 90.0% | 122.3% | 141 | 316,737 | 20.5% | 25.0% | 238 | 472,052 | 168 | 323,187 | 41.7% | 46.1% |

- * Note:
1. During the month of January three Cruise Ship calls with 3,174 Cruise passengers visited two ports.
 2. During the month of February 2 Cruise Ship calls with 2,798 Cruise passengers visited two ports.
 3. Included in the total Cruise passengers for the month of February, 1 call with 55 passengers visited Port Antonio.
 4. During the month of March 3 Cruise Ship calls with 2,679 Cruise passengers visited two ports.
 5. Included in the total Cruise passengers for the month of March, 1 call with 268 passengers visited Kingston.

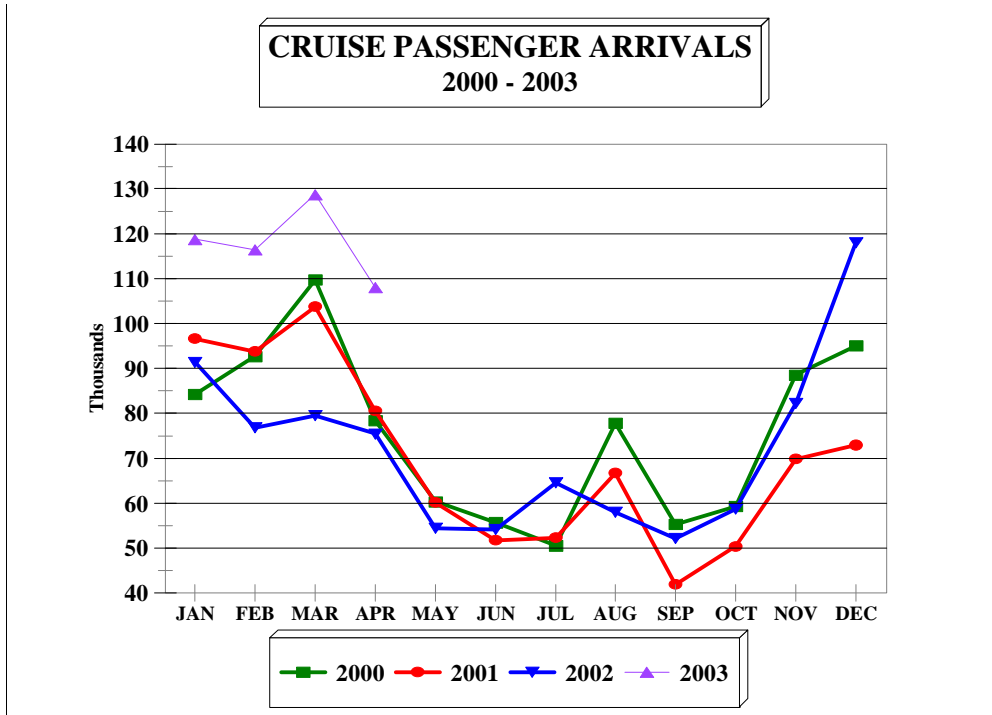


FIG. 4

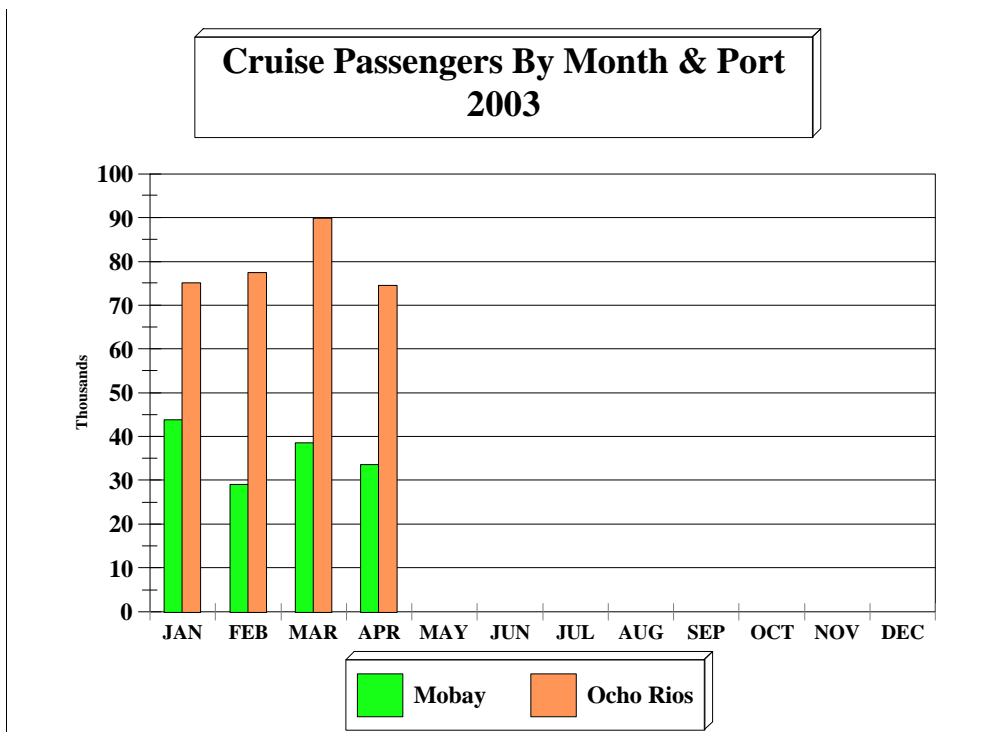


FIG. 4a

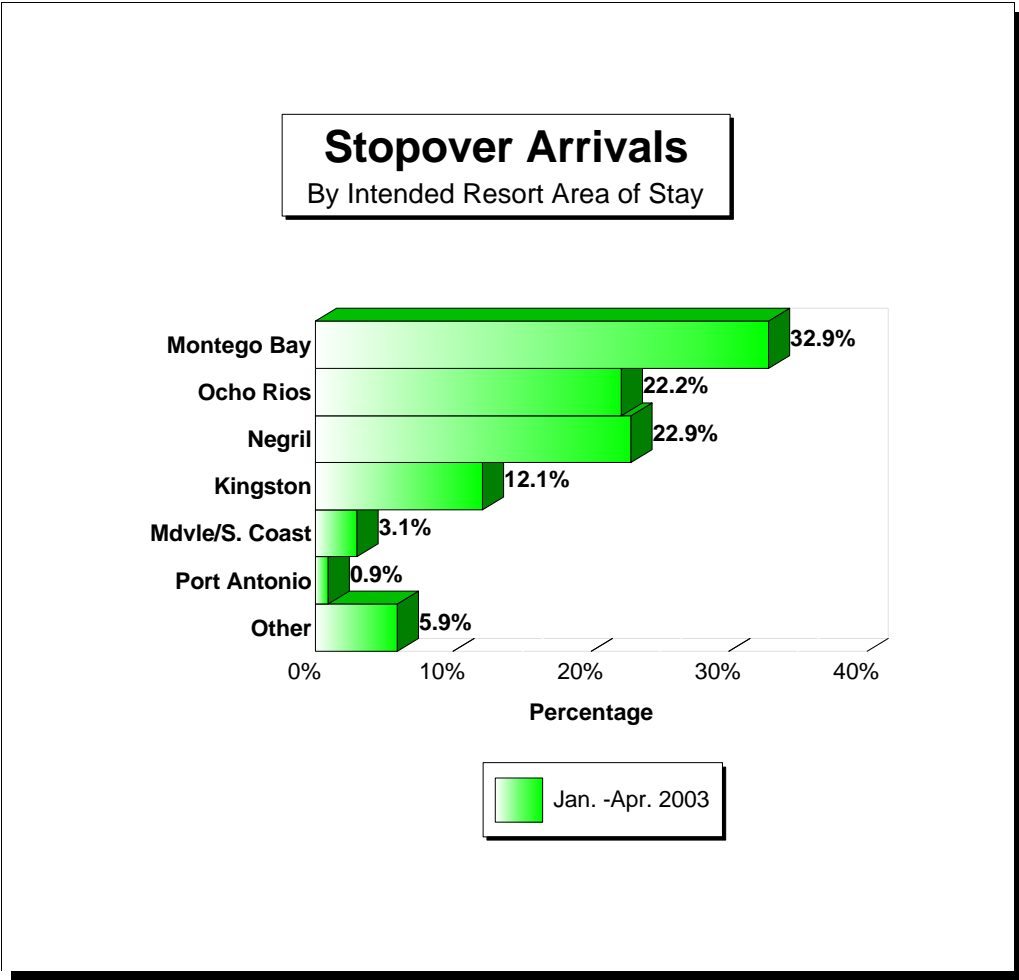


Fig. 5

STOPOVER ARRIVALS BY INTENDED AREA OF STAY

| Area | APRIL | | JAN.-APR. | | JAN.-APR | | %Change 2003/02 |
|----------------|----------------|---------------|----------------|---------------|----------------|---------------|--------------------|
| | 2003 | %Share | 2003 | %Share | 2002 | %Share | |
| Montego Bay | 35,755 | 31.9% | 149,431 | 32.9% | 137,152 | 32.6% | 9.0% |
| Ocho Rios | 24,636 | 22.0% | 100,816 | 22.2% | 89,334 | 21.2% | 12.9% |
| Negril | 23,248 | 20.8% | 103,883 | 22.9% | 99,464 | 23.6% | 4.4% |
| Kingston | 15,689 | 14.0% | 55,098 | 12.1% | 52,737 | 12.5% | 4.5% |
| Mdvle/S. Coast | 3,636 | 3.2% | 13,884 | 3.1% | 13,420 | 3.2% | 3.5% |
| Port Antonio | 1,070 | 1.0% | 4,094 | 0.9% | 4,142 | 1.0% | -1.2% |
| Other | 7,940 | 7.1% | 27,017 | 5.9% | 24,747 | 5.9% | 9.2% |
| Total | 111,974 | 100.0% | 454,223 | 100.0% | 420,996 | 100.0% | 7.9% |